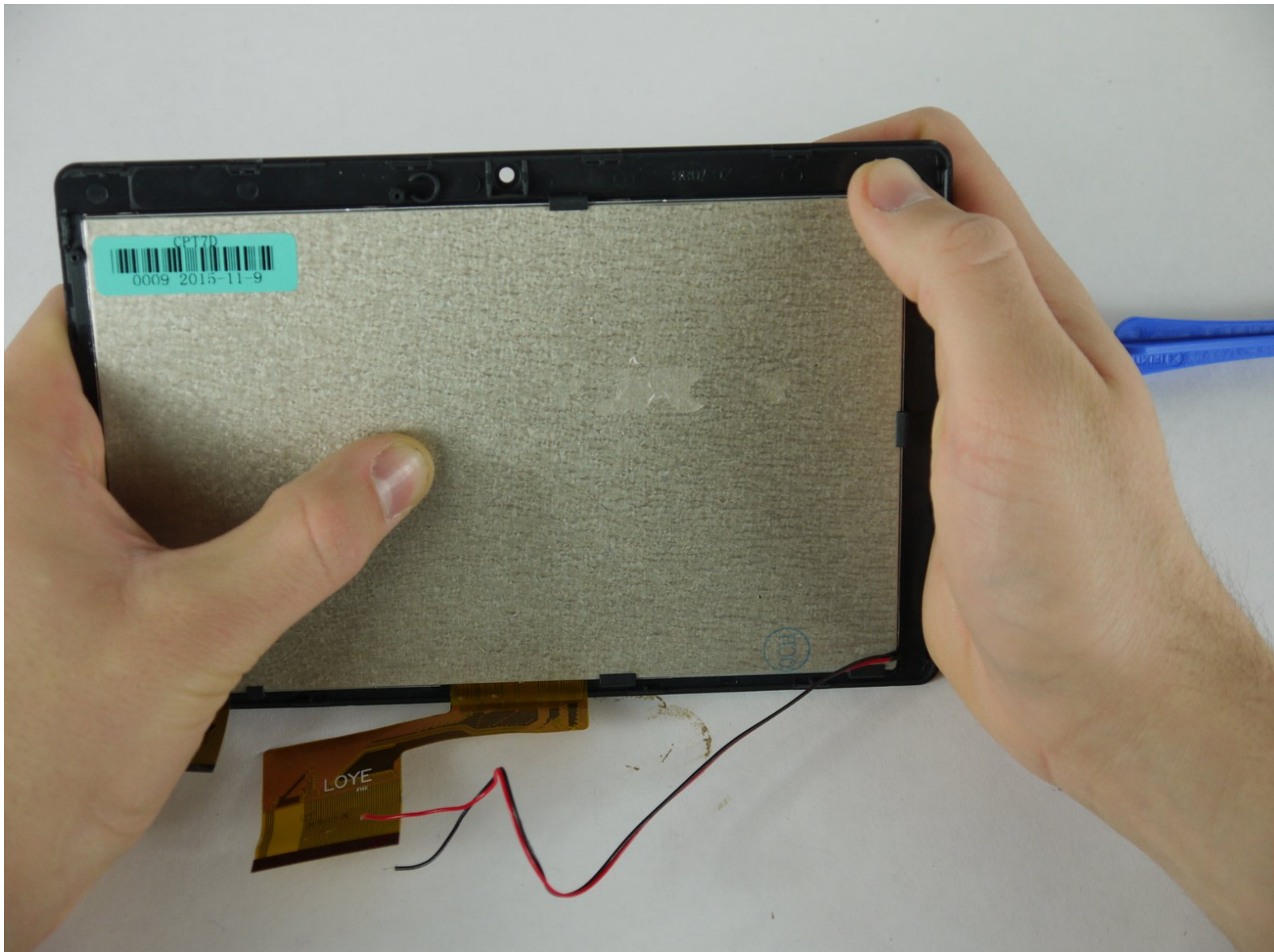




Alldaymall A88X LCD Screen and Touch Sensor Assembly Replacement

PREREQUISITE

Written By: Drhaber



INTRODUCTION

PREREQUISITE

TOOLS:

- [Spudger](#) (1)
 - [Phillips #0 Screwdriver](#) (1)
 - [iFixit Opening Tools](#) (1)
 - [Soldering Iron](#) (1)
 - [Tweezers](#) (1)
-

Step 1 — Alldaymall A88X Back Cover



- Using a plastic opening tool, carefully pry the device apart. Make your way around the entire perimeter of the device and carefully place the two panels next to each other.
- ⚠ After the panels are separated, watch out for the speaker on the rear panel as it's wire is rather short.
- ⓘ When separating the panels keep an eye out for the power button and volume rocker as they can be dislodged.

Step 2



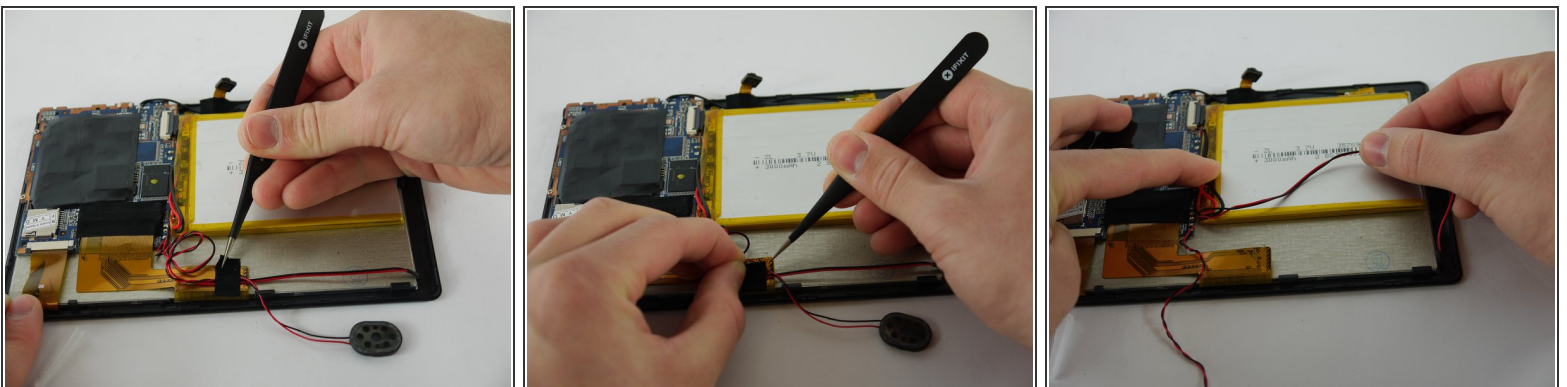
- Grip the speaker from the sides with your fingers or a pair of tweezers and slowly begin to remove it from the rear panel.
- ⚠ When removing the speaker, make sure not to disconnect the wires in any way.
- After the speaker has been removed, place the rear panel aside.

Step 3 — Speaker



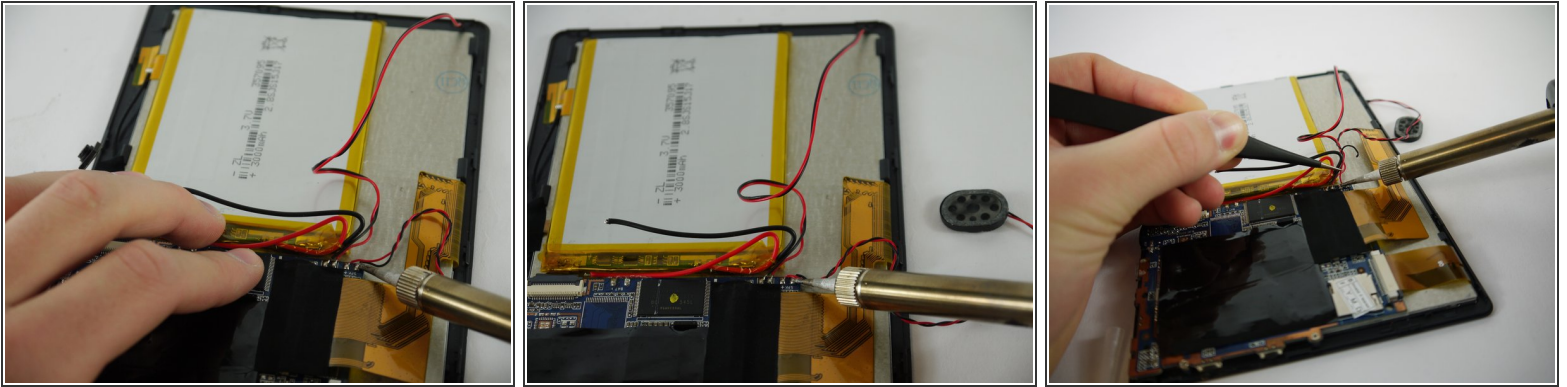
- Carefully separate the speaker wire from the tape and proceed to peel the tape off in an upwards direction.
- ⓘ The tape we are removing covers a number of connections on the motherboard. Be extra careful not to sever any of these.

Step 4



- Using a pair of tweezers, begin separating the tape downwards from the back panel.
- Pull the tape away from the wire bundle beneath.
- Isolate the wire running from the speaker to the motherboard.

Step 5




- [Desolder](#) the speaker wires from the motherboard.

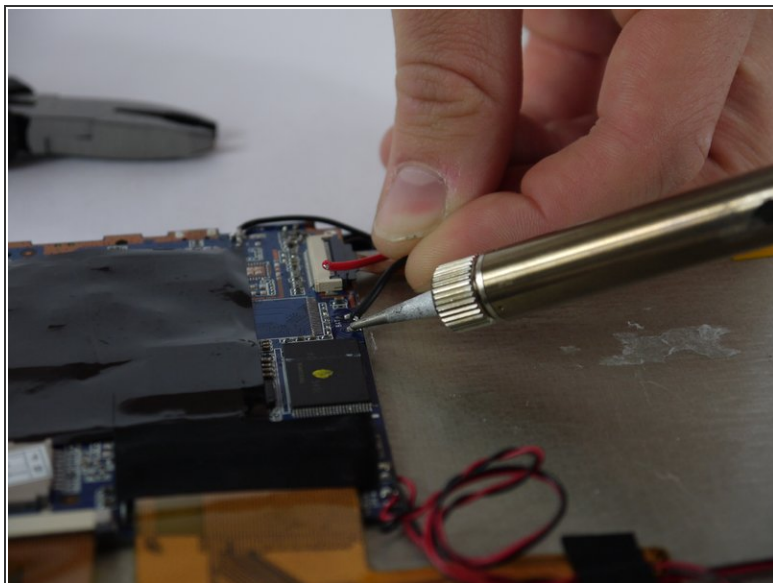
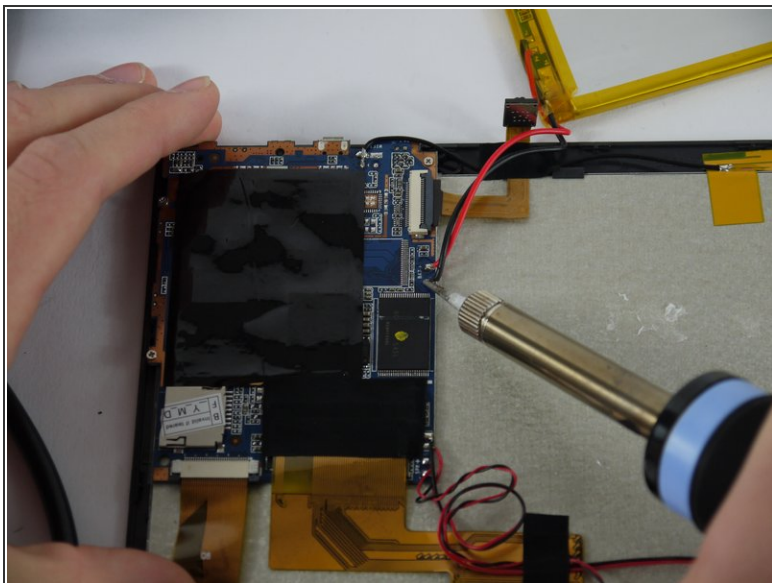
Step 6 — Camera



- Using a nylon spudger, slowly work your way underneath the battery separating it from the panel beneath.
- After the battery is separated from the panel make sure to place it face down above the tablet itself.

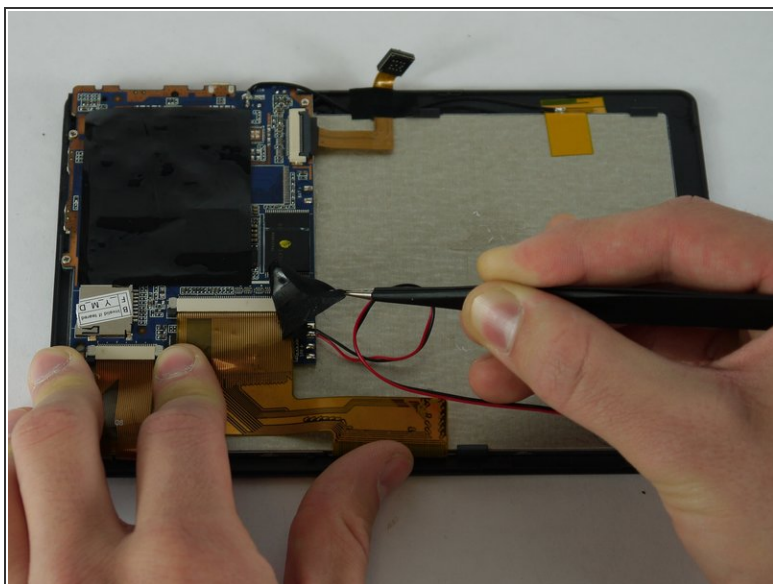
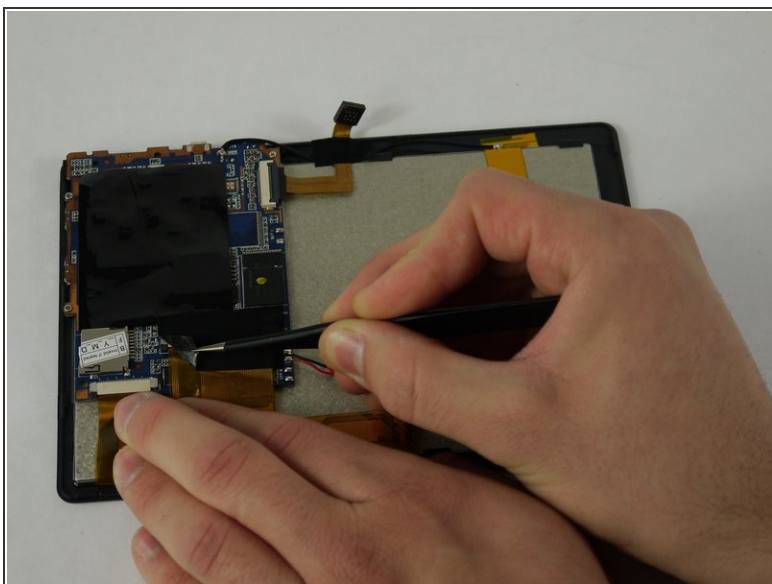
 Throughout the removal process keep an eye on the battery's wires and make sure they do not break.

Step 7



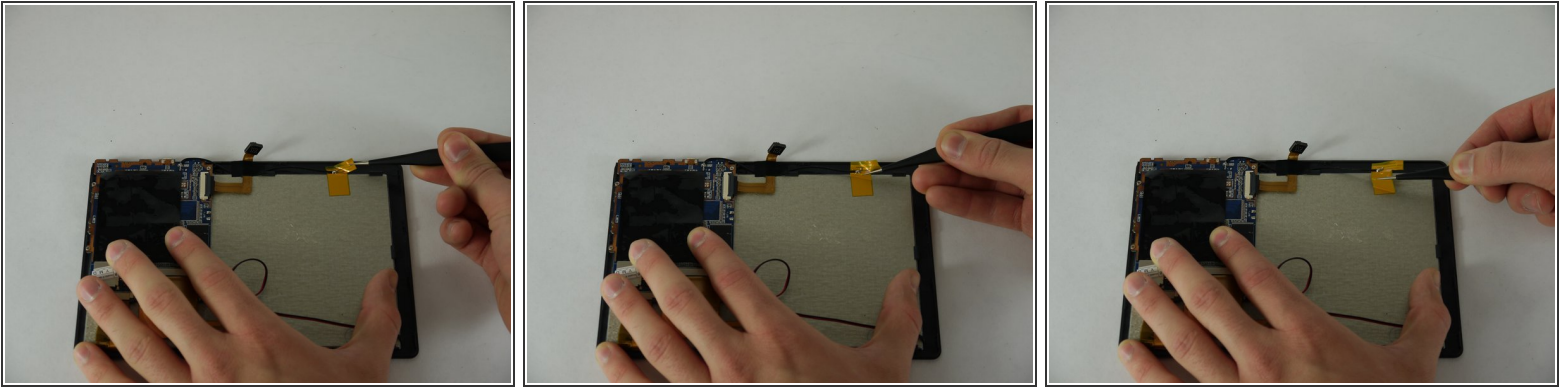
- [Desolder](#) the wires that connect the battery to the motherboard.

Step 8



- Using a pair of tweezers begin to peel the tape covering the ribbon cable on the motherboard.

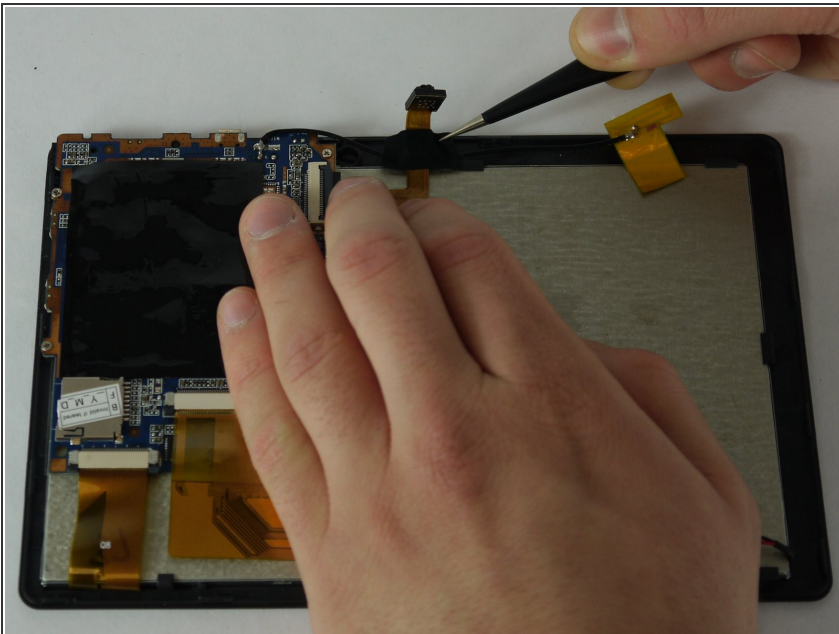
Step 9



- Using a pair of tweezers begin to peel the antenna from the metal panel.
- Work your way down until the antenna is completely removed.

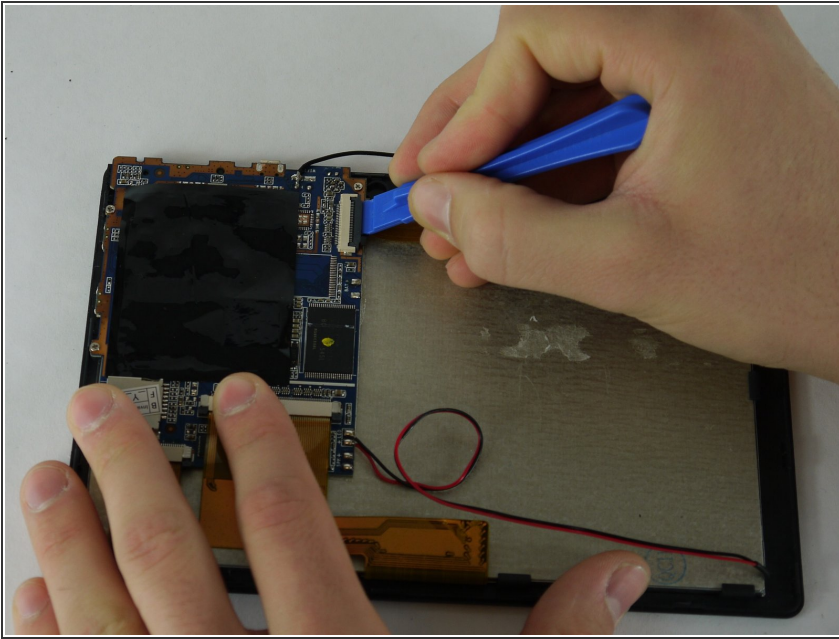
⚠ Be careful not deform the antenna or sever its connection.

Step 10



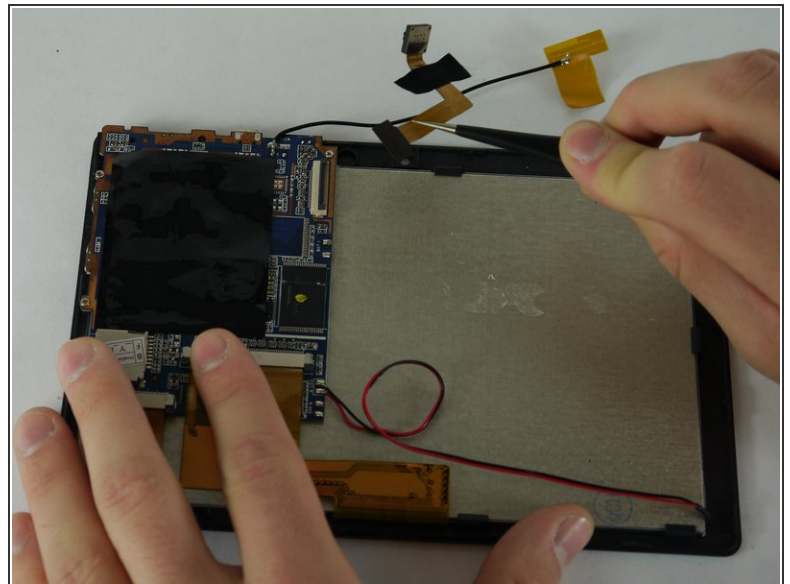
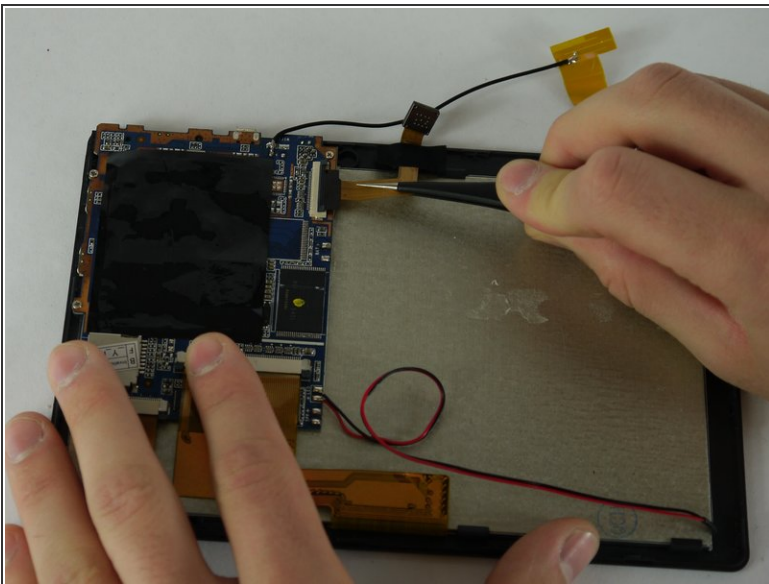
- Using a pair of tweezers remove the tape securing the cameras to the back panel.

Step 11



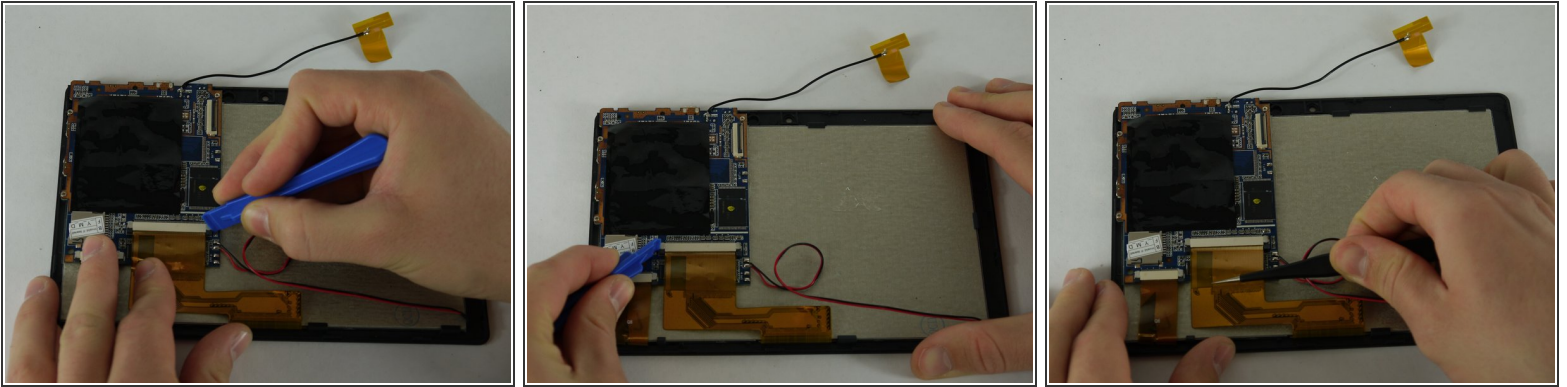
- Using a plastic opening tool lift up the flap on the ribbon cable receptacle.

Step 12



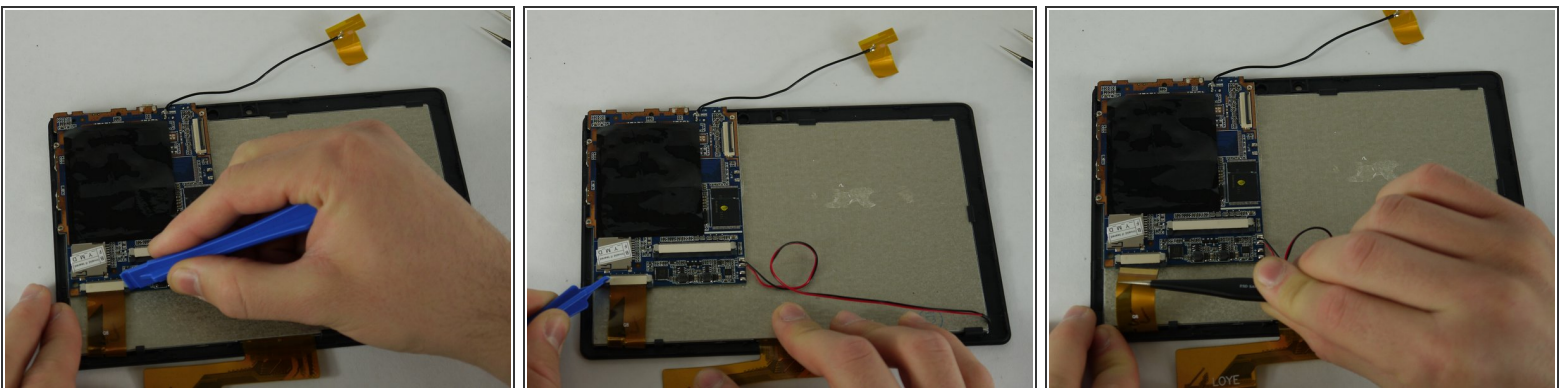
- Using a pair of tweezers remove the camera assembly from its housing and its receptacles.

Step 13 — Motherboard



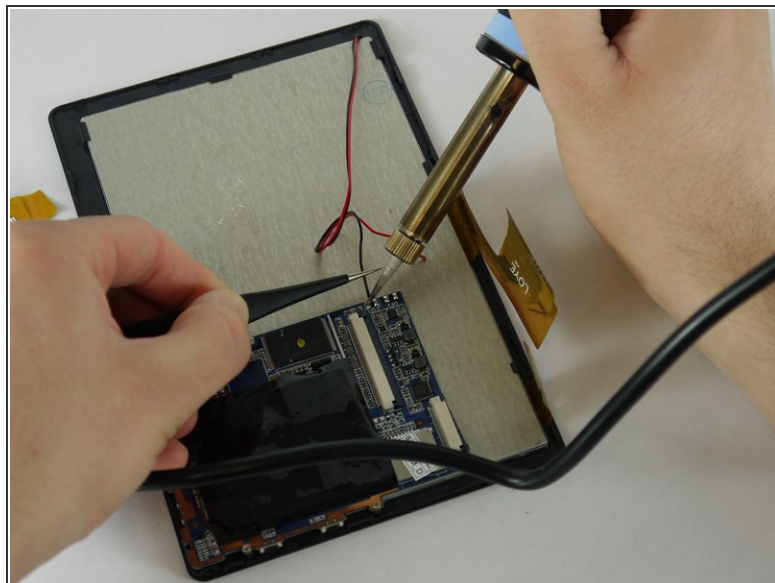
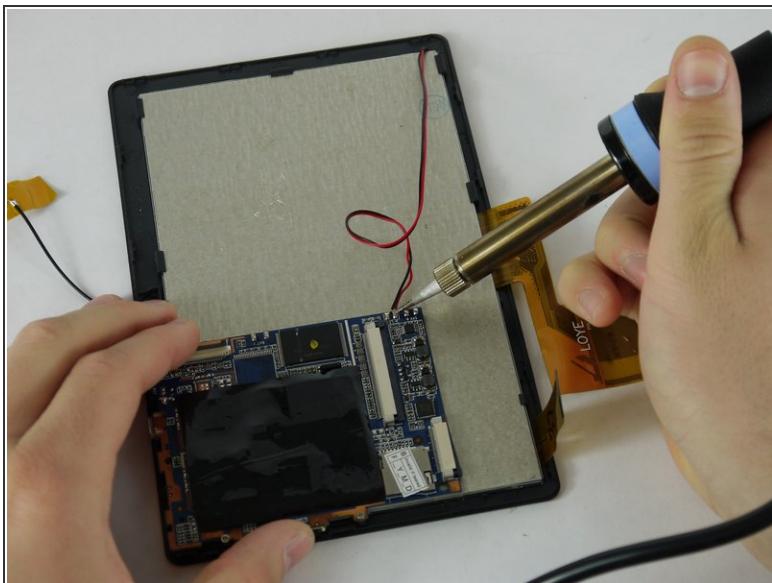
- Use a plastic opening tool to pull out the black knobs on both sides of the ribbon cable receptacle.
- Using a pair of tweezers remove the ribbon cable from its receptacle.

Step 14



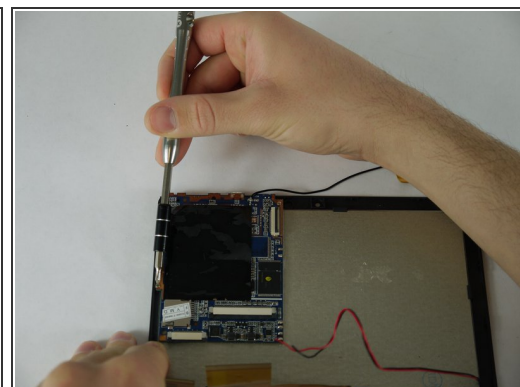
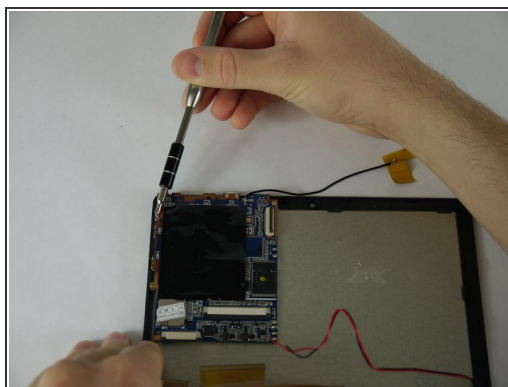
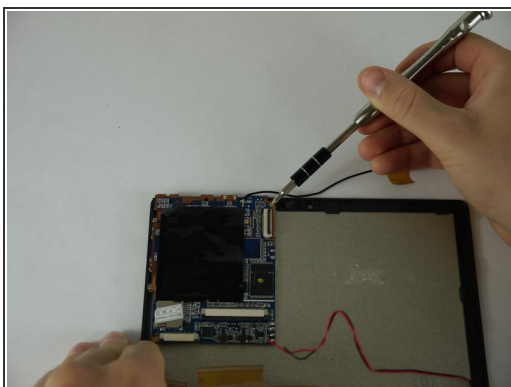
- Now on the left ribbon cable use a plastic opening tool to pull out the black knobs on both sides of the ribbon cable receptacle.
- Using a pair of tweezers remove the ribbon cable from its receptacle.

Step 15



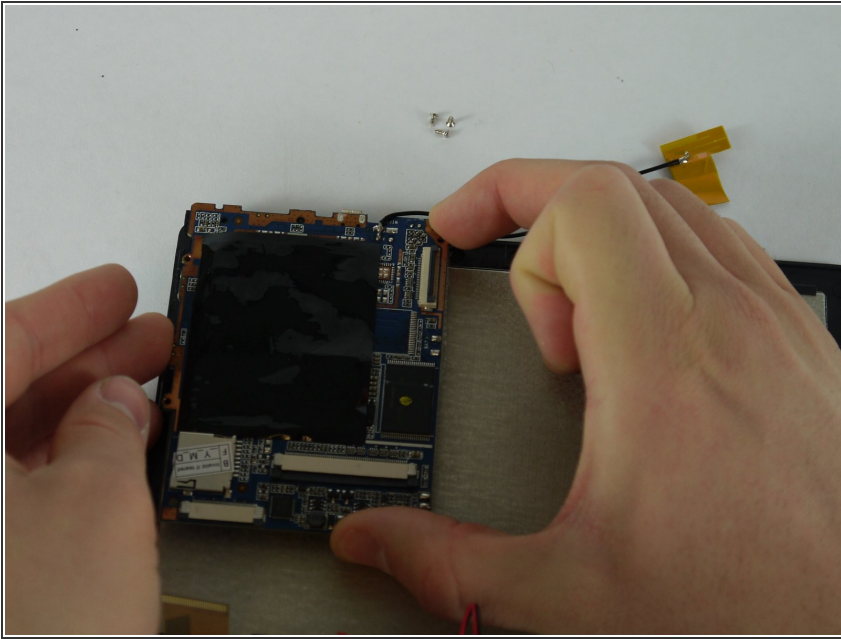
- [Desolder](#) the wires that connect the backlight to the motherboard.

Step 16



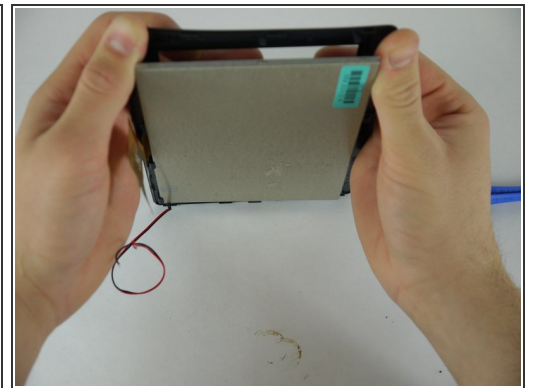
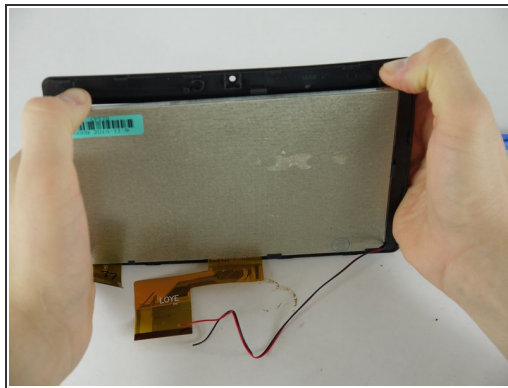
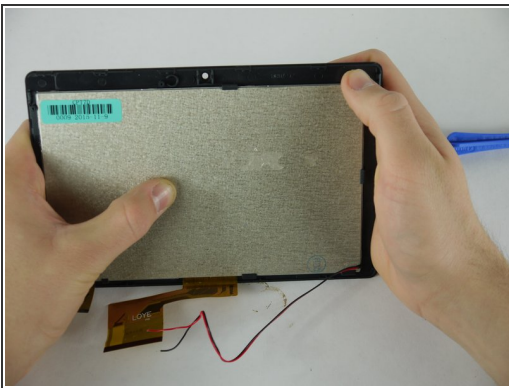
- Using a PH0 screw bit unscrew the three 3mm screws securing the motherboard to the back panel.

Step 17



- Carefully lift up on the motherboard from its housing.

Step 18 — LCD Screen and Touch Sensor Assembly



- Gently pry the brackets holding the touch sensor to the LCD Screen

⚠ Do not bend the touch sensor too much as it may shatter.

To reassemble your device, follow these instructions in reverse order.