



HP Mini 110-3735dx Screen Replacement

Replace the screen of your HP Mini 110-3735dx.

Written By: Tyrone Williams



INTRODUCTION

If your screen is damaged, flicking, or cracked, use this guide to replace the screen.



TOOLS:

- [Phillips #1 Screwdriver](#) (1)
 - [iFixit Opening Tools](#) (1)
 - [Tweezers](#) (1)
-

Step 1 — Battery



- With the bottom of the HP Mini facing up, slide both switches inward towards each other.

Step 2



- With the left switch still pushed inward, pull the battery towards you to remove it from the computer.

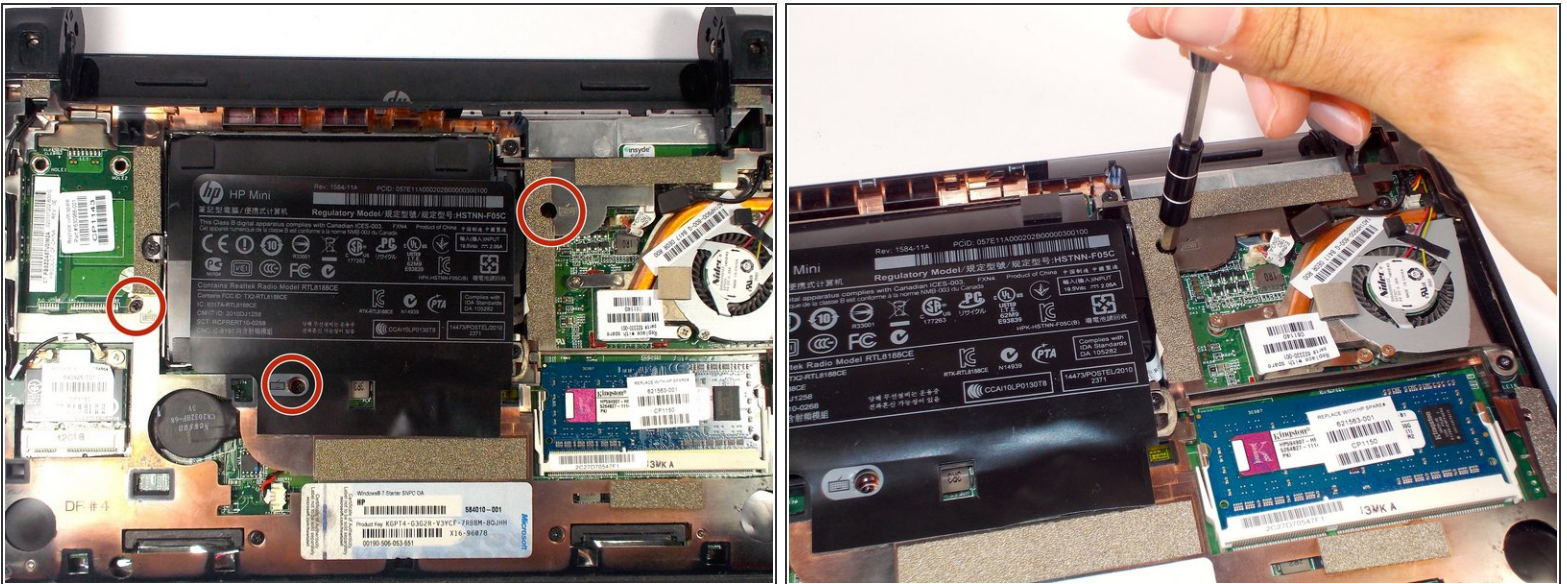
Step 3 — Backcover



- Pull upward from under the back cover via the missing battery area.

i Best to start from one of the corners.

Step 4 — Keyboard



- Remove the three 4.0 mm screws with the keyboard indicator next to them using a Phillips #1 screw driver.

Step 5



- Flip the laptop over, and open it up.

i Don't worry! No pieces will fall out.

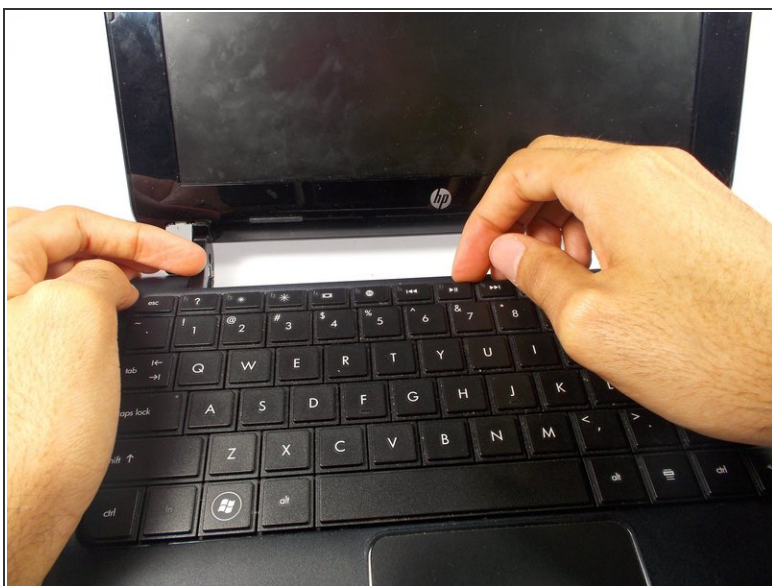
Step 6



- With the keyboard facing you, pull the black bezel upward until its loose.

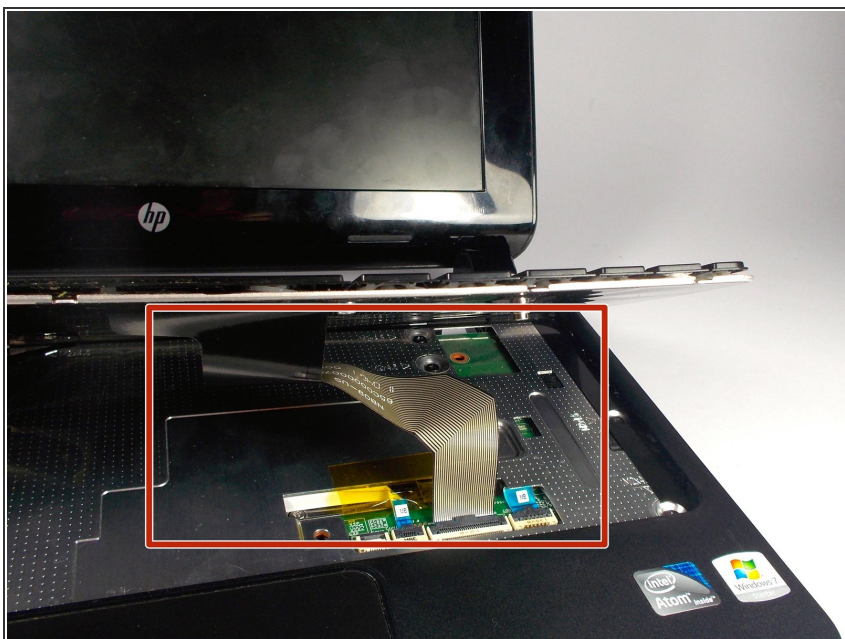
i You should hear three clicks.

Step 7



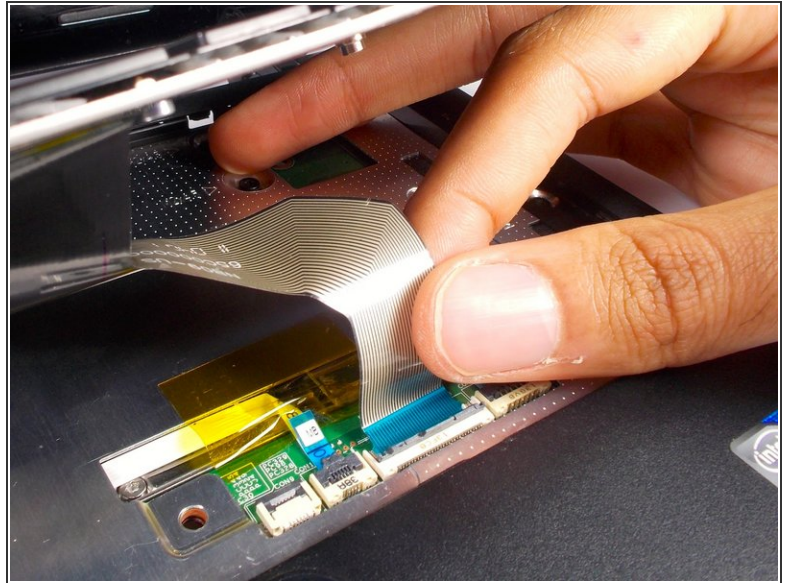
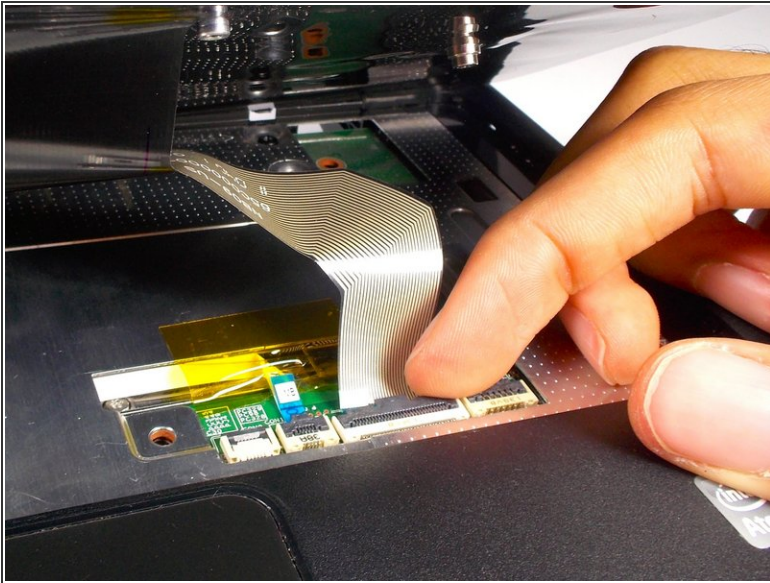
- Move and hold the bezel slightly towards the screen while lifting the keyboard from the top.

Step 8



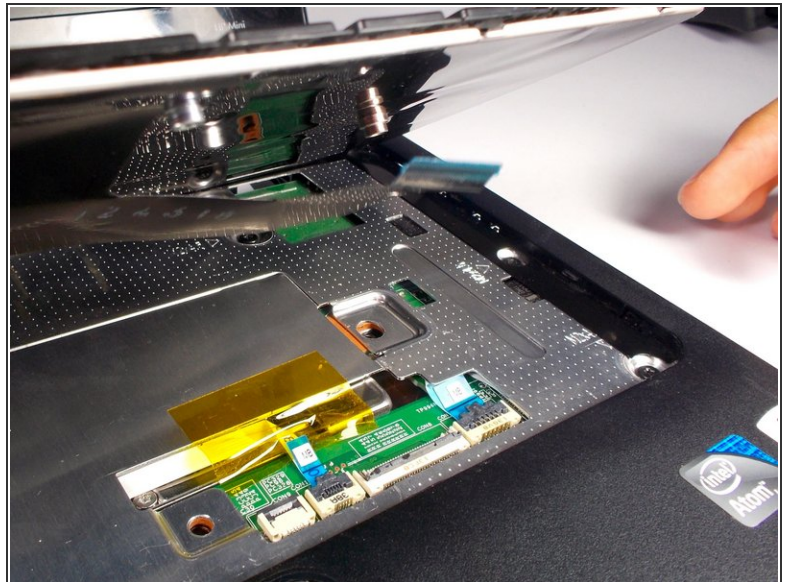
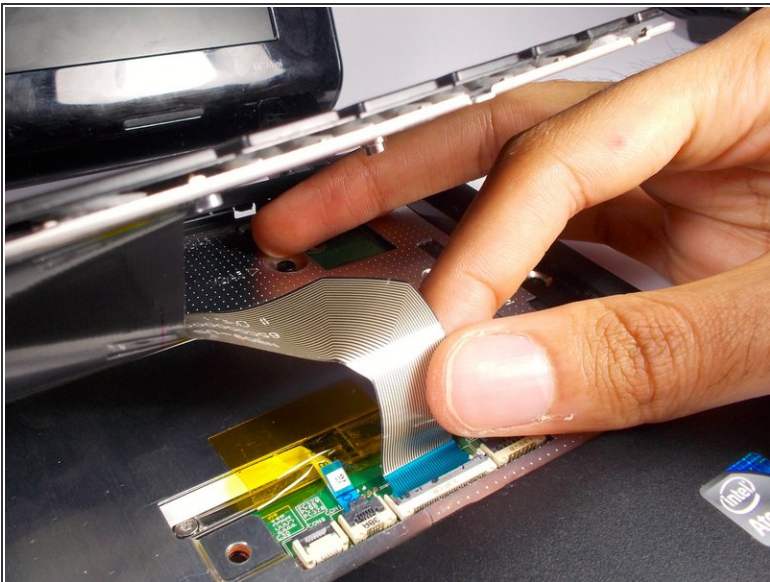
- Pull up the keyboard from the bottom corners exposing the keyboard cable.

Step 9



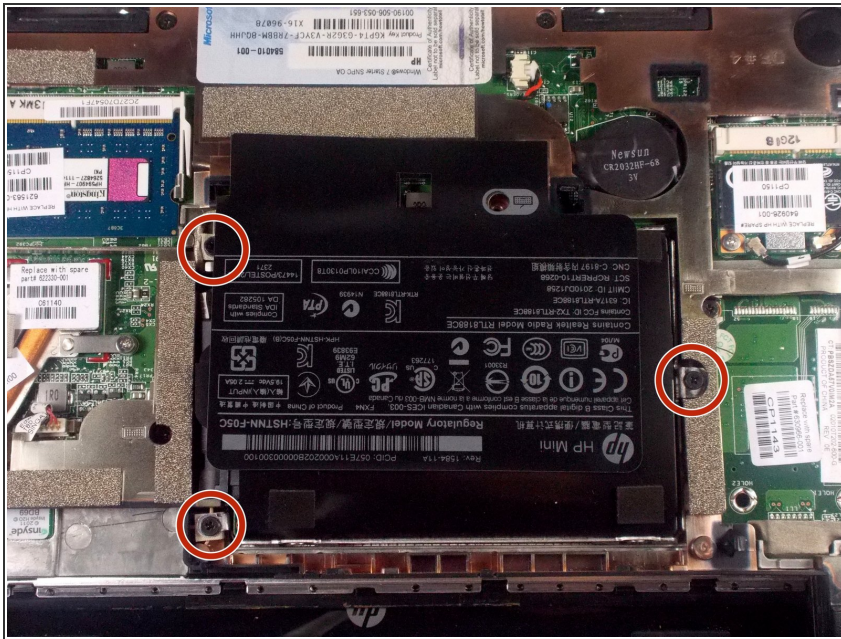
- Lift the black holder connected to the keyboard cable until it points up.

Step 10



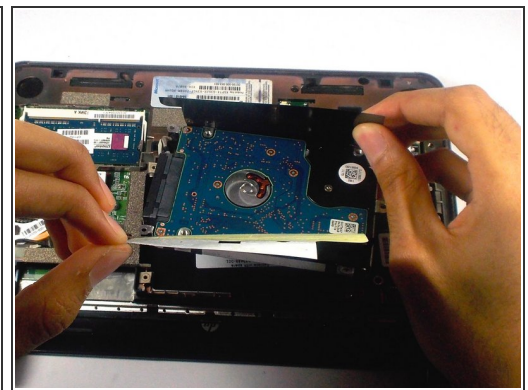
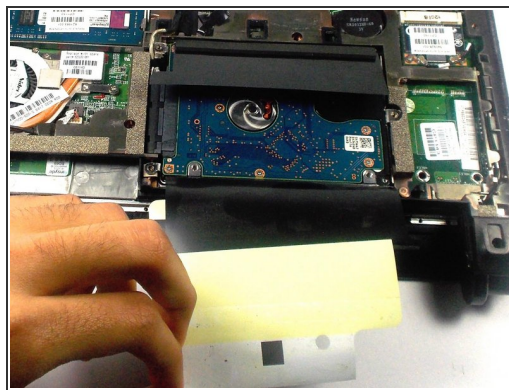
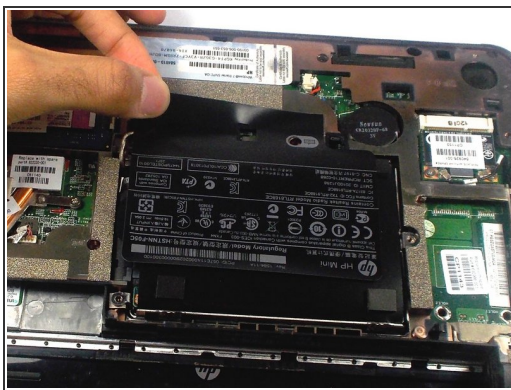
- Gently pull the keyboard cable from the socket.

Step 11 — Hard Drive Cage



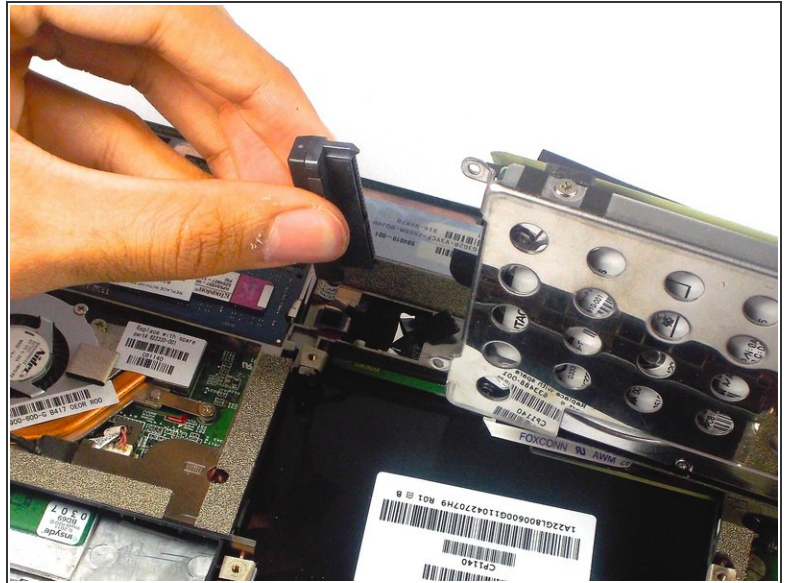
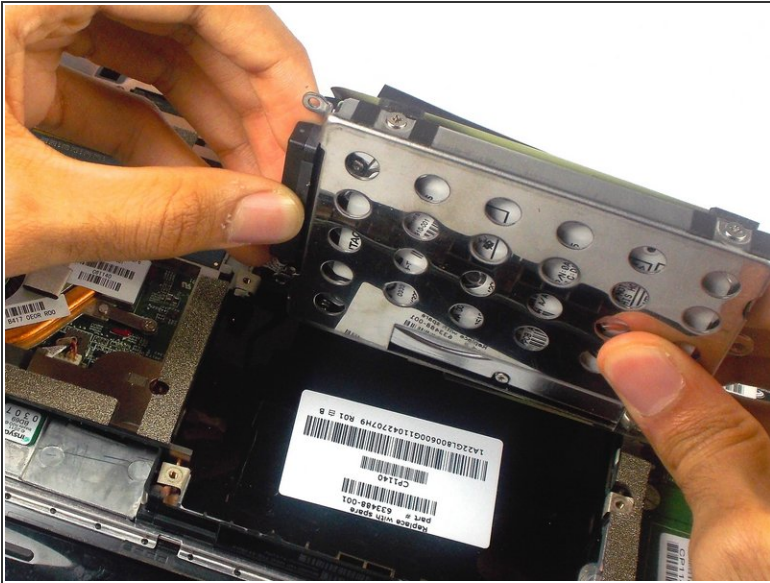
- Remove the three 5.0 mm screws holding the hard drive cage in place using a Phillips #1 screw driver.

Step 12



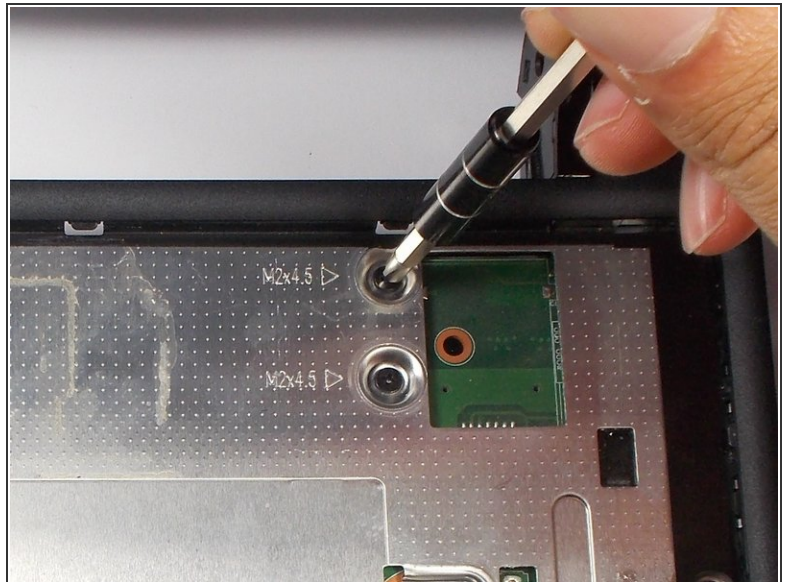
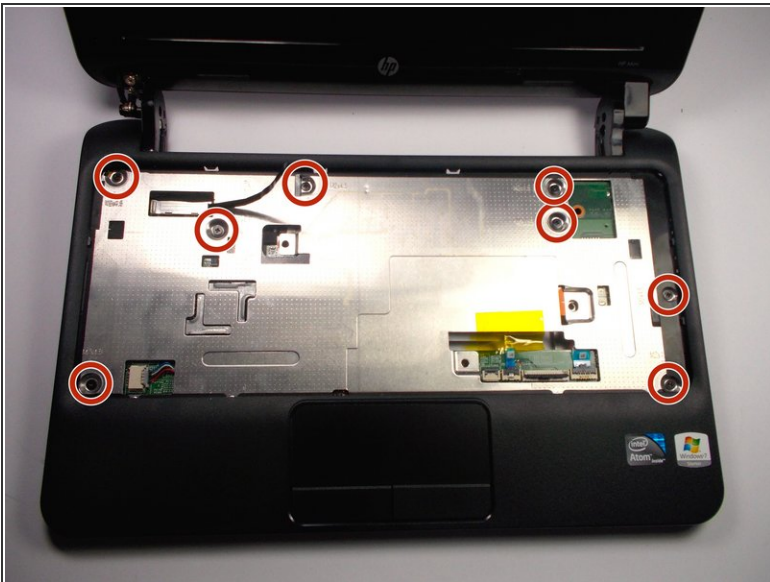
- Lift the hard drive cage by pulling the tape upward.
- Start by pulling the tape from the side with the keyboard symbol.

Step 13



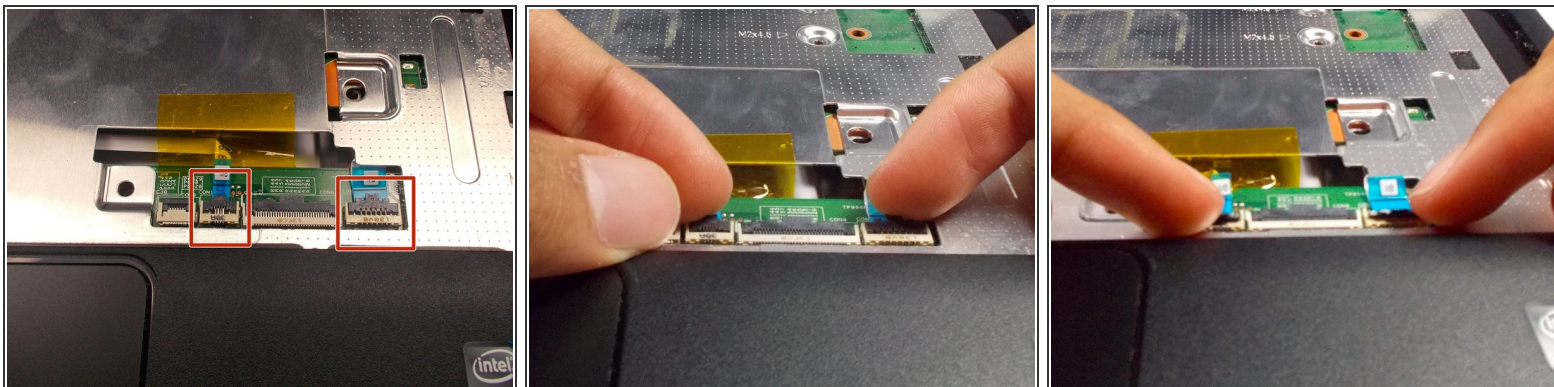
- Unplug the cable connecting to the hard drive.

Step 14 — Screen



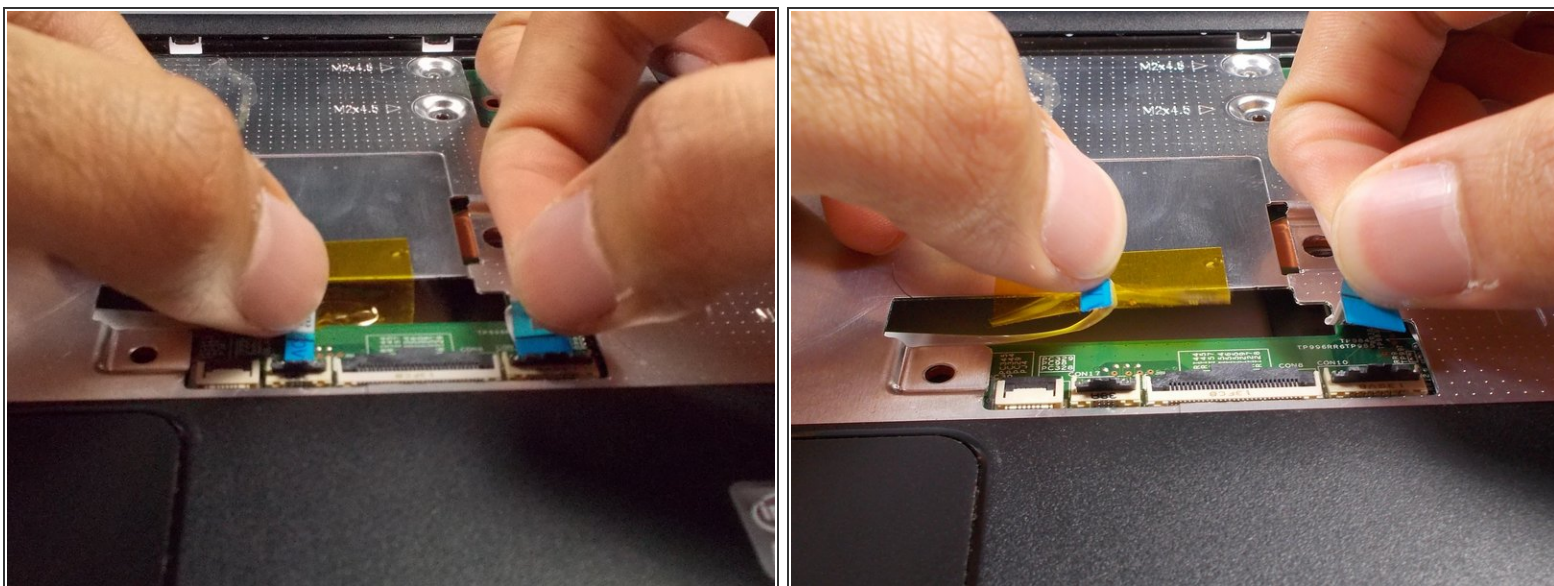
- Remove the 8 5.0 mm screws under the keyboard using a Phillips #1 screw driver.

Step 15



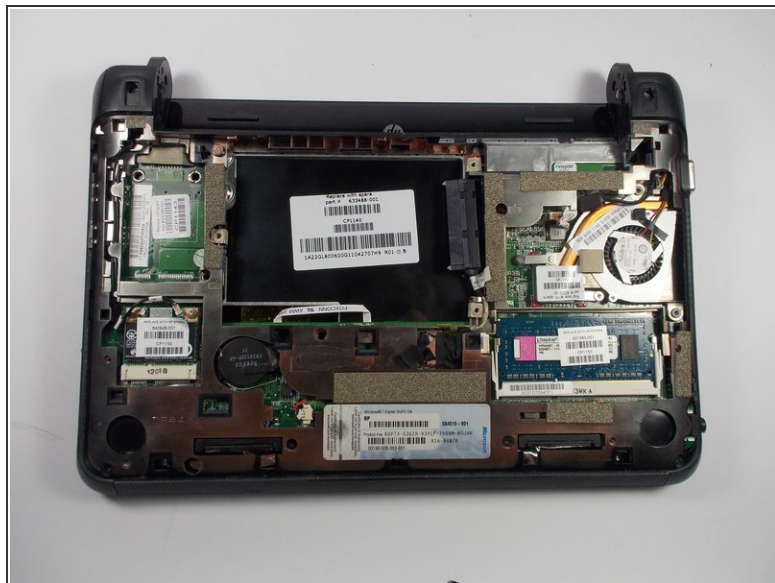
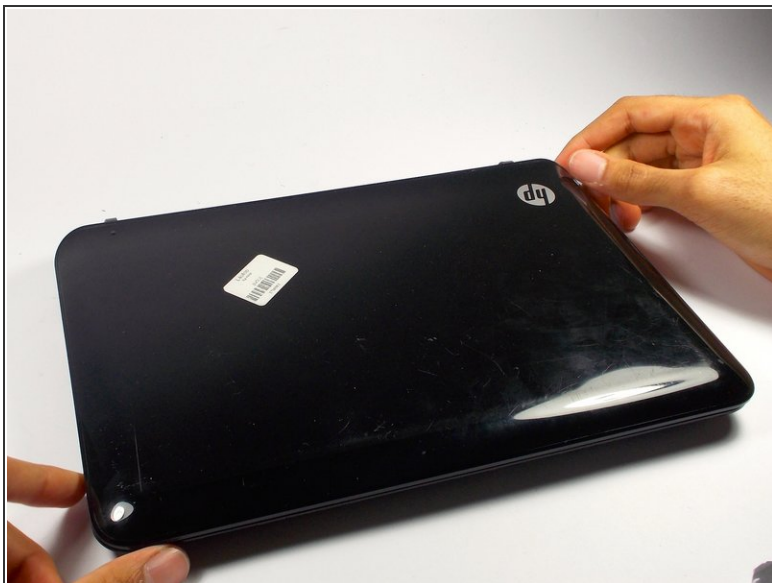
- Lift the two black holders upward located next to the socket for the keyboard close to the tracked pad.

Step 16



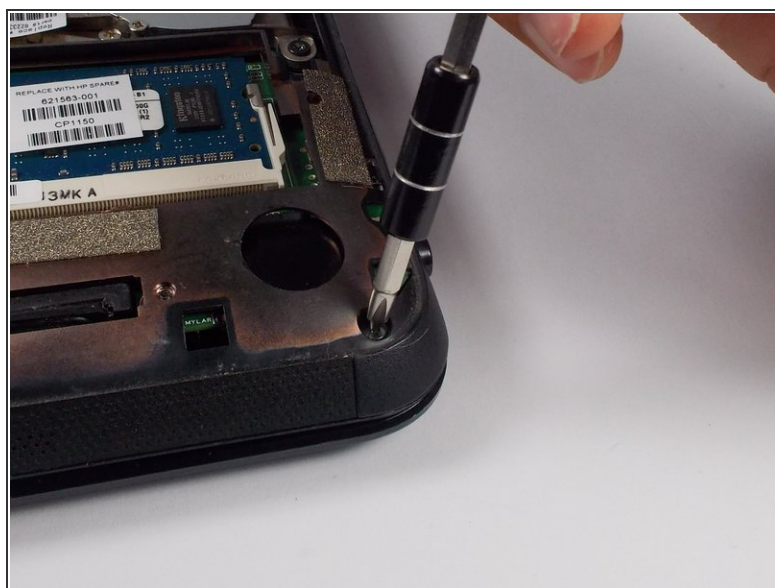
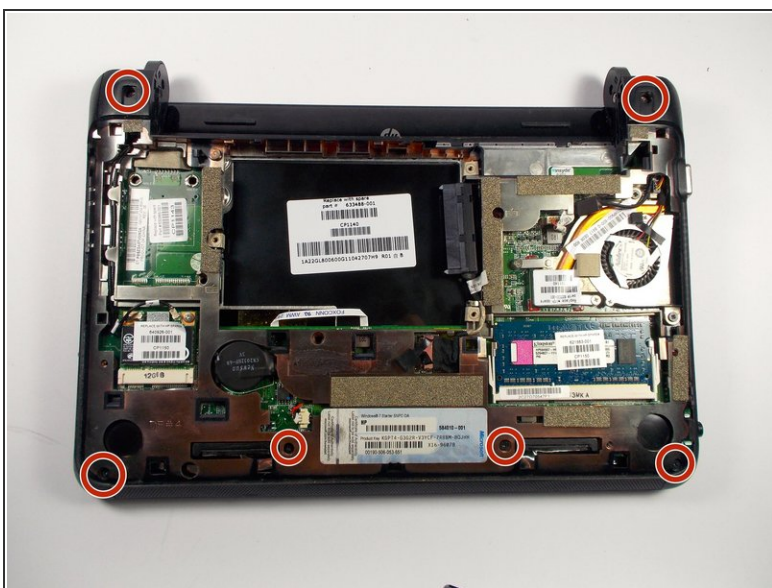
- Remove the two connectors for the motherboard from their sockets.

Step 17



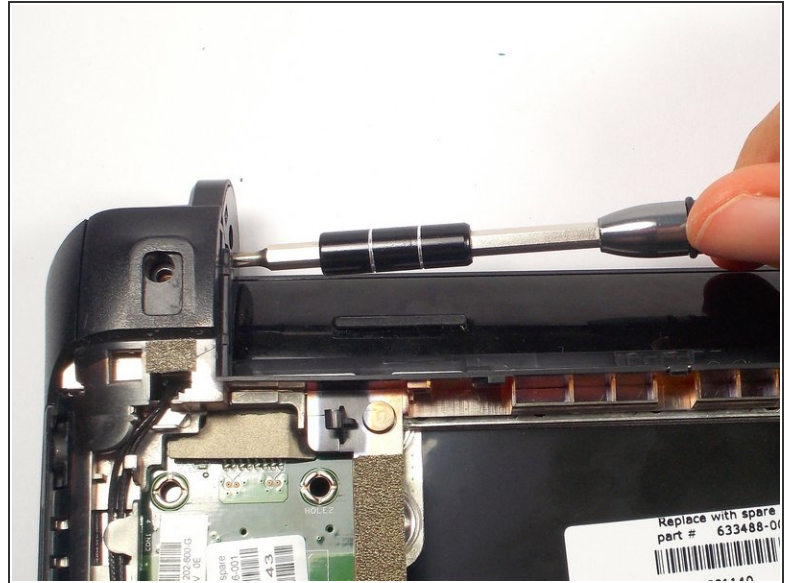
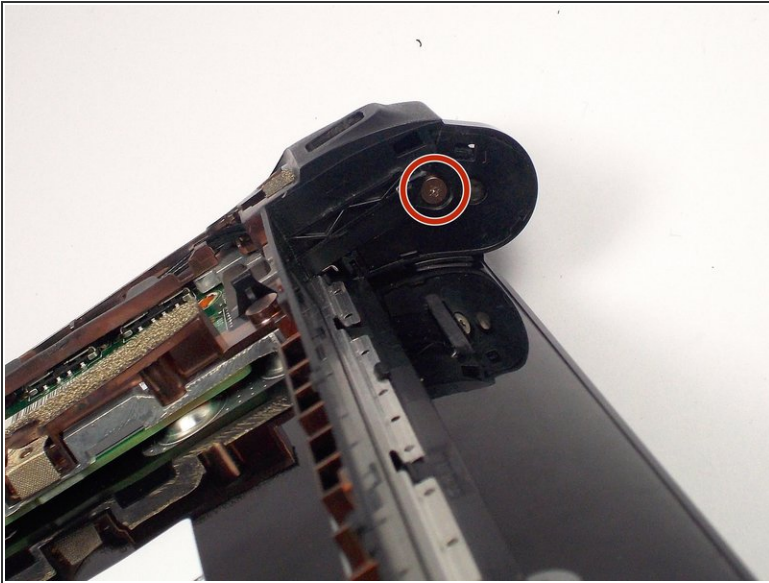
- Close the laptop by bringing the screen down.
- Flip the laptop over to the other side.

Step 18



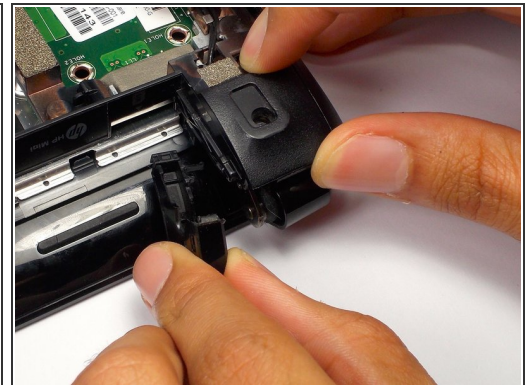
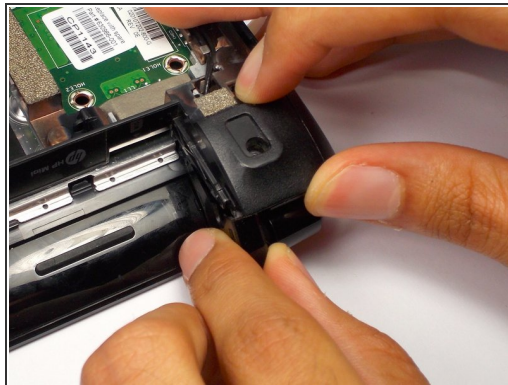
- Remove the 6 5.0 mm screws holding the back plate together using a Phillips #1 screw driver.

Step 19



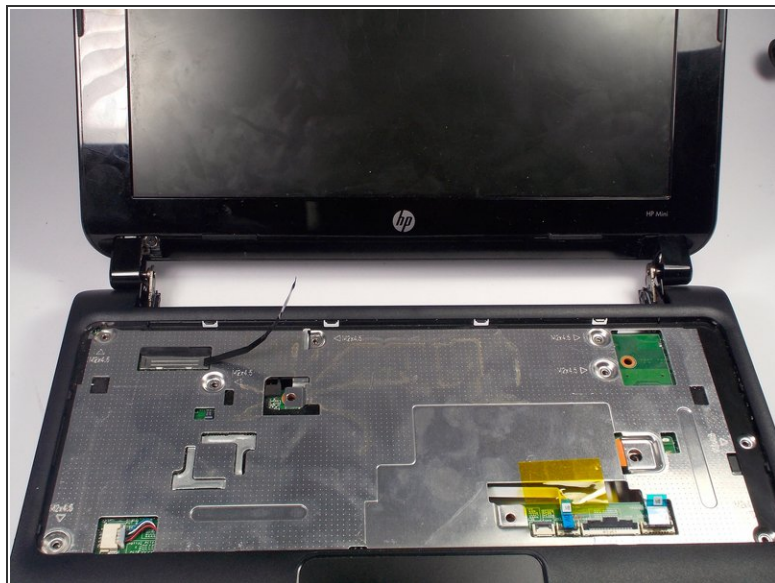
- Remove the 2 3.0 mm screw head holding the plastic piece in place using a Phillips #1 screw driver.
- Located on the left and right side where the battery was removed.

Step 20



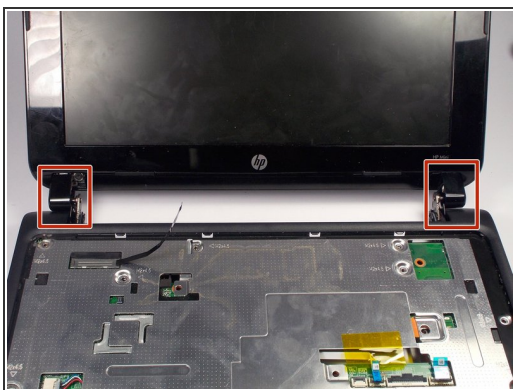
- Pull the black plastic pieces that the screws was holding inward.
- The pieces are located on the left and right corners connecting the bottom and top of the HP Mini.

Step 21



- Flip the laptop back over.
- Open it by lifting the screen.

Step 22



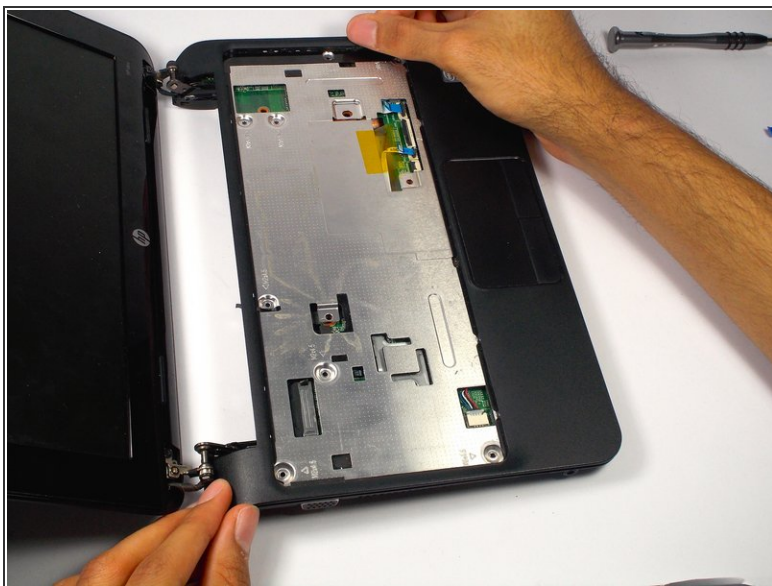
- Right next to the previous plastic piece, remove the other two plastic pieces.
- i** This may be difficult to come off. Tilt the screen back and forth to help loosen the piece.

Step 23



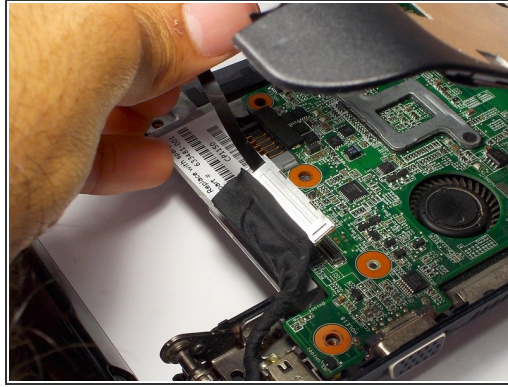
- Using the plastic prying tool, pry the front plate of the bottom part of your HP Mini.
- ❗ Start along the speaker grill near the touch pad, and move along the sides.

Step 24



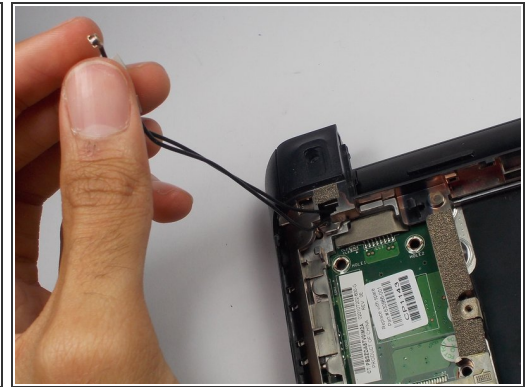
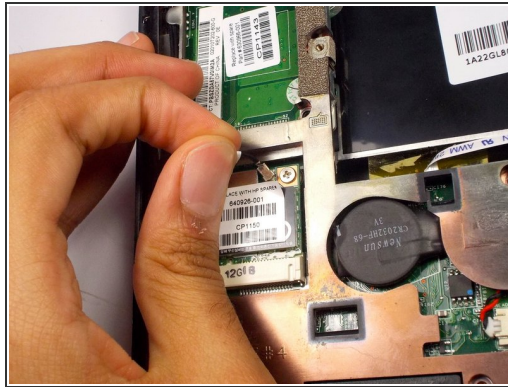
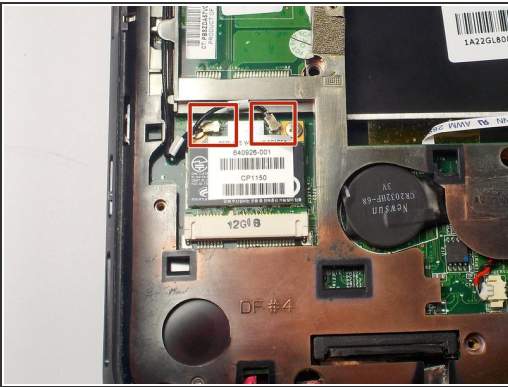
- Lift up the front plate where the keyboard was.

Step 25



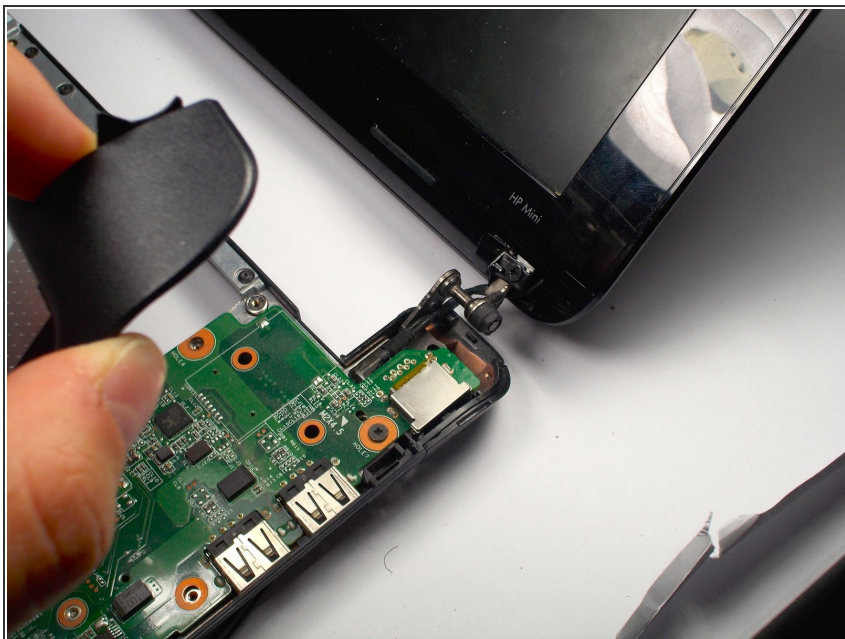
- Remove the display cable from the motherboard located on the top left corner under where the keyboard was by pulling on the black tab.
- Move the cable.

Step 26



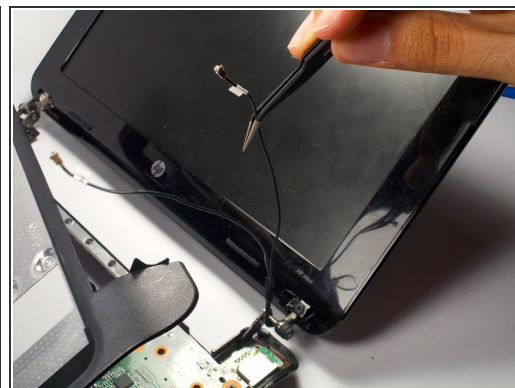
- Remove the webcam cables from the motherboard.
- Located on the back side of the laptop in the bottom left corner.

Step 27



- Flip over the computer, and open the laptop.
- Lift up the front plate on the top right corner.

Step 28



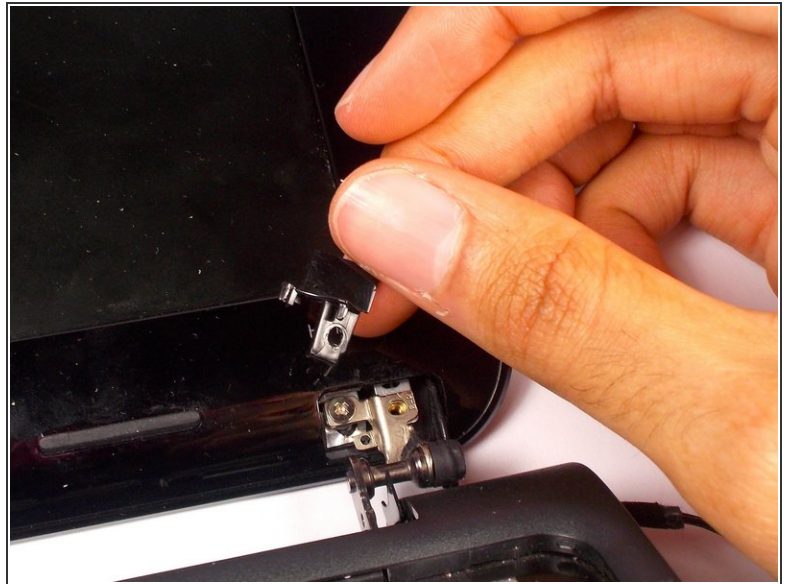
- Pull the cables for the web cam out using tweezers.

Step 29



- Remove the 2 3.0 mm screws on both sides of the bottom of the display using a Phillips #1 screwdriver.

Step 30



- Remove the black plastic piece that the screw was holding on both sides.
- This will reveal another screw.

Step 31



- Remove the 2 3.0 mm screws on both sides using a Phillips #1 screw driver.

⚠ When removing, keep hold of the screen to make sure it doesn't fall.

Step 32



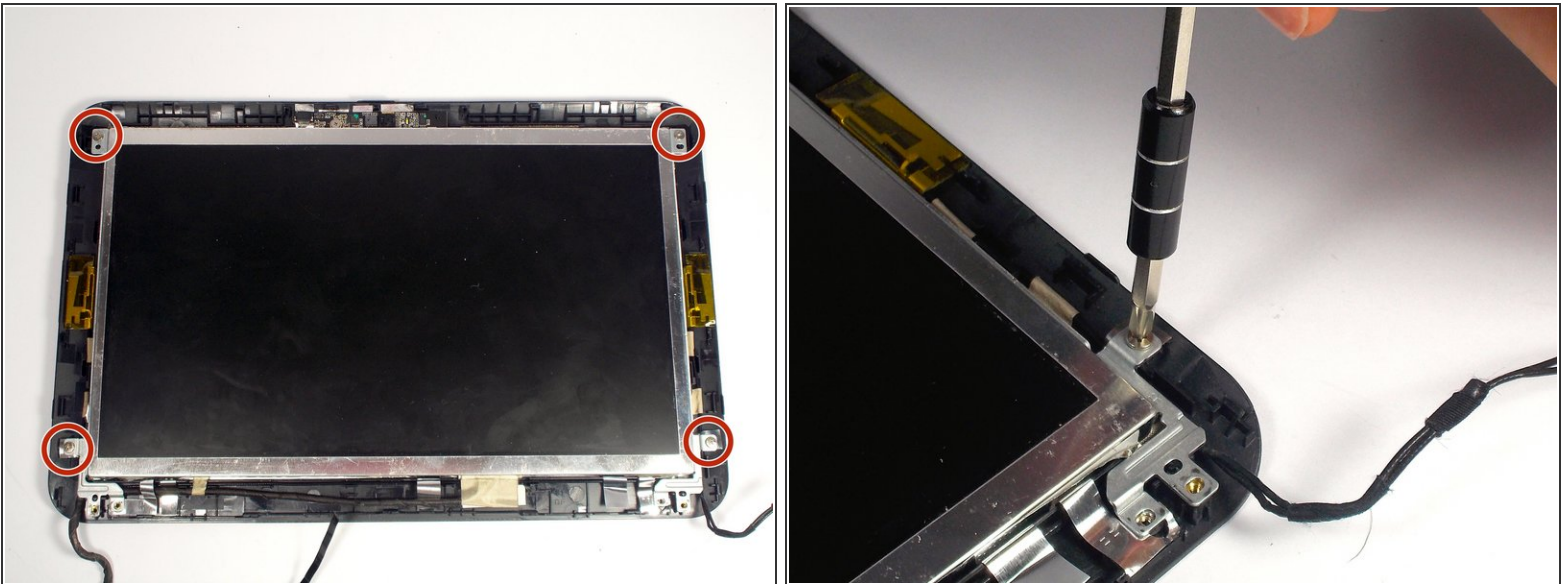
- Pry the front plate using the plastic opening tool by pushing along the border of the front and back plate.
- Make sure to pry from the sides, top and bottom as the corners will come undone themselves.

Step 33



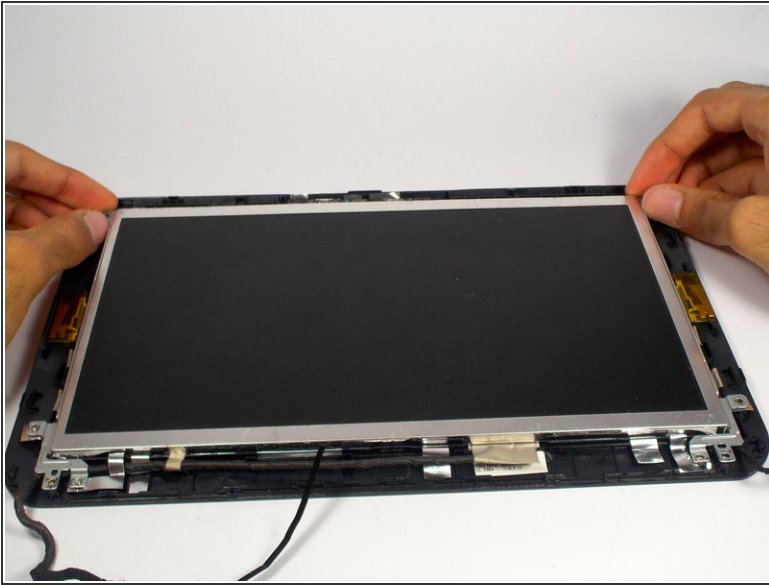
- Remove the front plate.
- Pull the cables through the holes.

Step 34



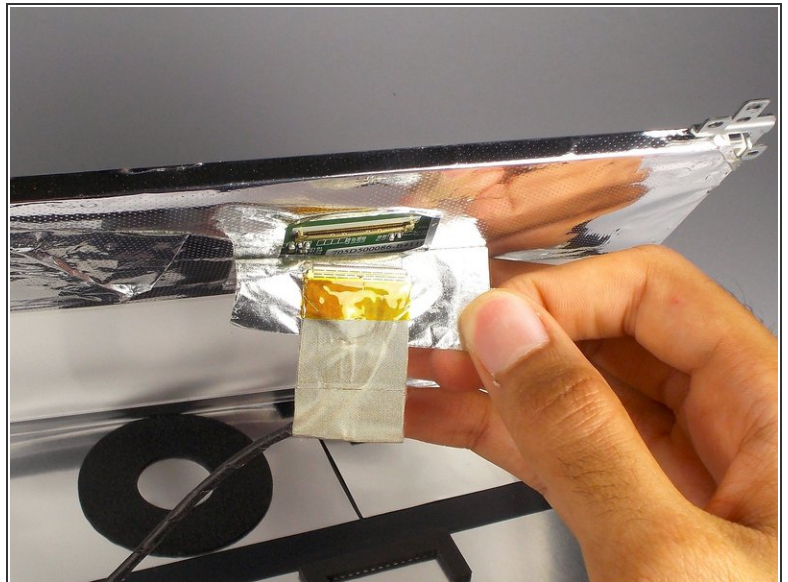
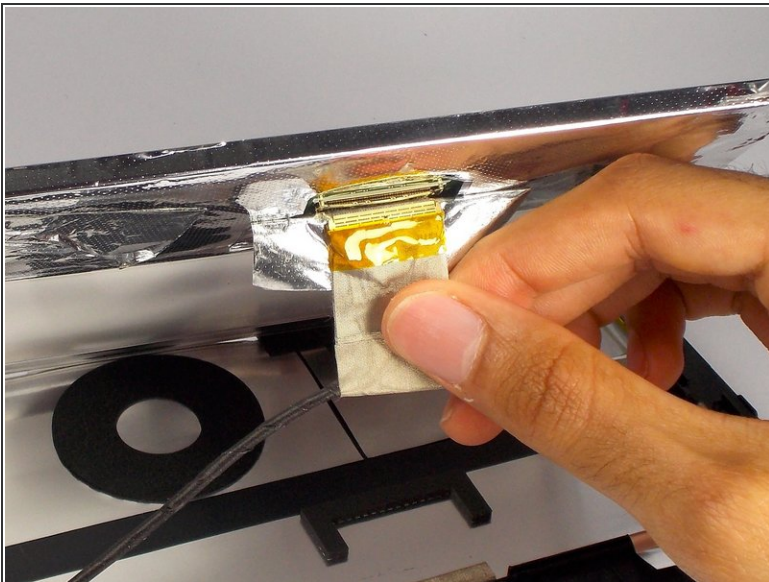
- Remove the 4 4.0 mm screws holding the screen in place using a Phillips #1 screw driver.

Step 35



- Lift the screen up.

Step 36



- Under the screen, peel off the tape near the cable completely, so you can see the socket for the cable.

To reassemble your device, follow these instructions in reverse order.