



Porter-Cable PC60TAG Power Cord Replacement

Replace the power cord on your Porter-Cable PC60TAG.

Written By: Mackenzie Fairbanks



INTRODUCTION

Often times power cords can get damaged through long-term use, or mishandling of the device. Whatever the case, the power cord of the Porter-Cable PC60TAG can be replaced in a few easy steps.



TOOLS:

- [Phillips #2 Screwdriver](#) (1)
-

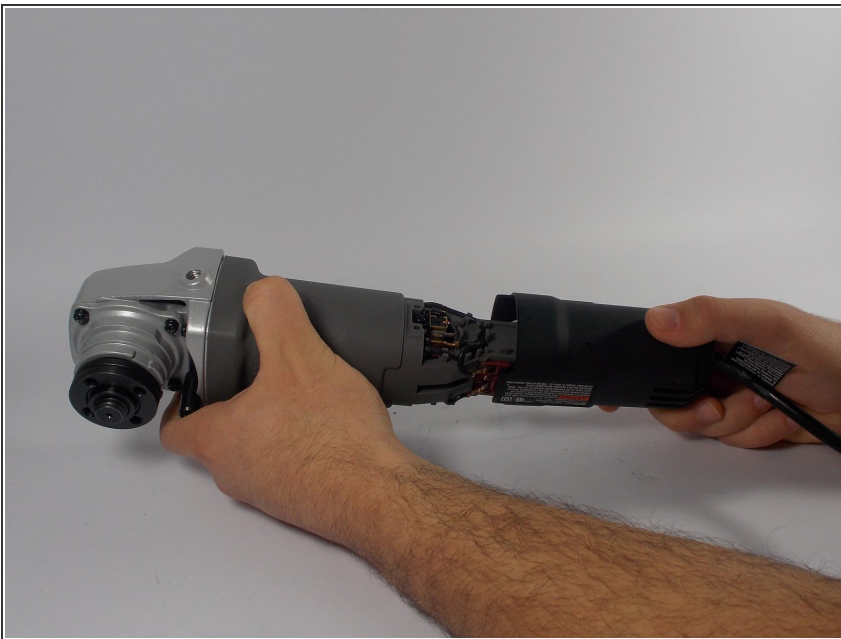
Step 1 — Power Cord



- Using the Phillips #2 screwdriver, remove the 3/4" Phillips head screw on the back cover.

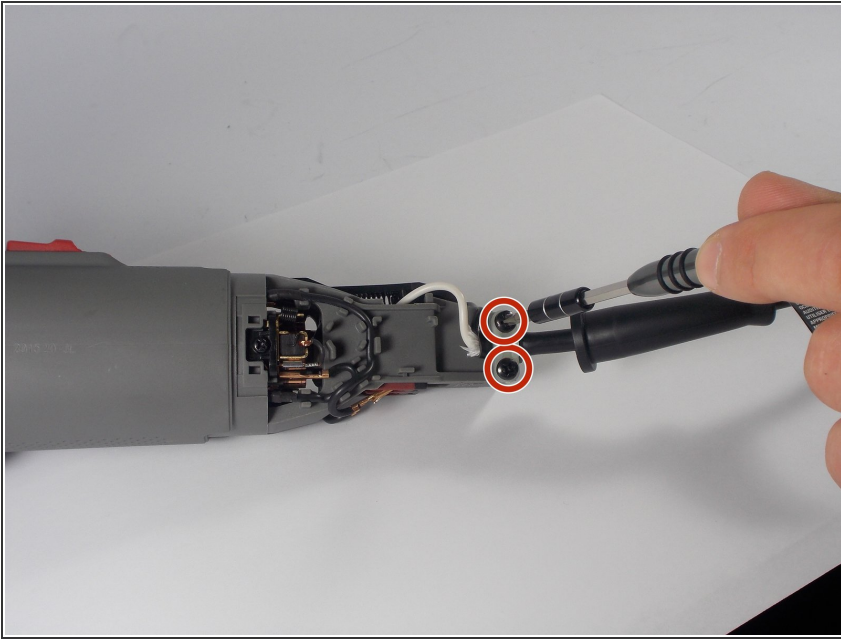
⚠ Unplug the grinder before disassembling.

Step 2



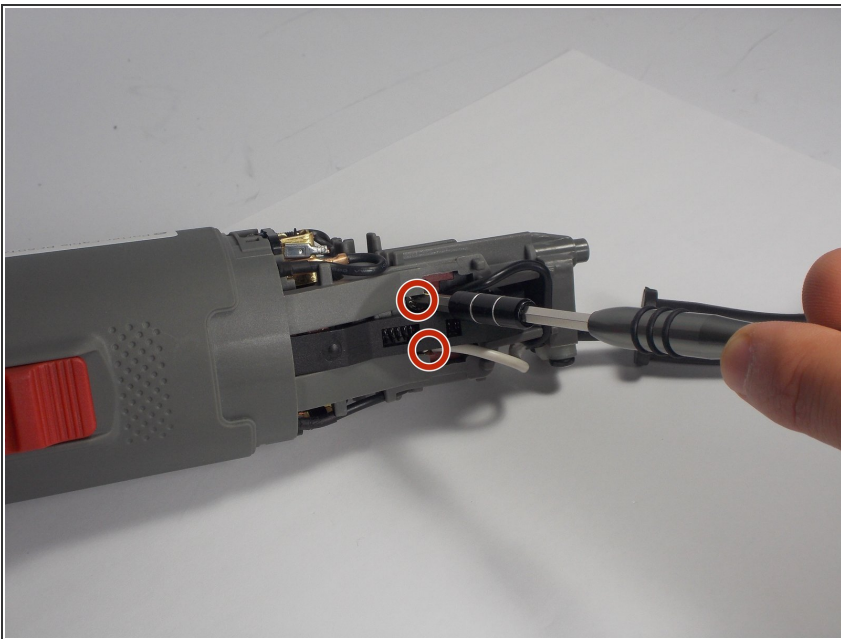
- Holding the front of the device, carefully slide the back cover over the cord.

Step 3



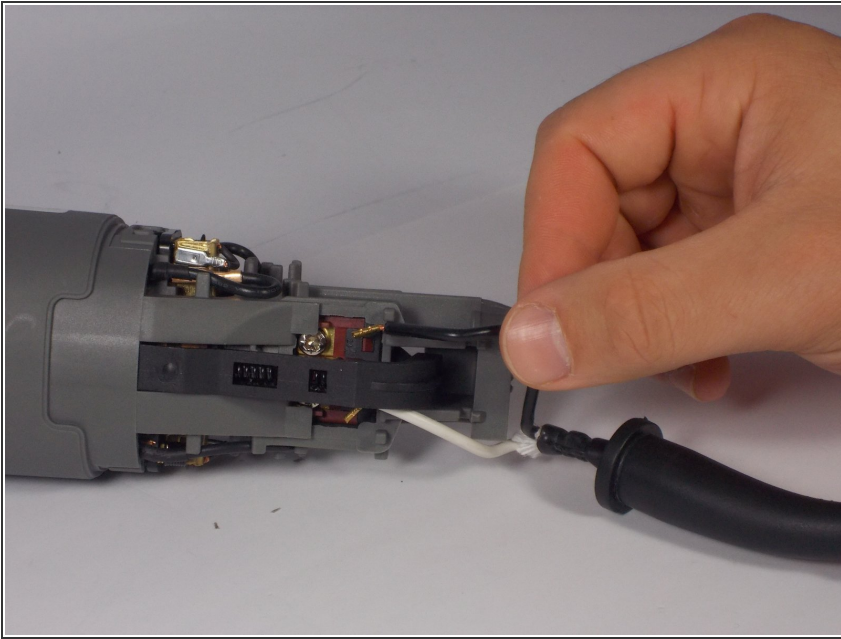
- Using the Phillips #2 screwdriver, remove the two 1/2" Phillips head screws securing the cord grip.

Step 4



- Using the Phillips #2 screwdriver, loosen, but do not remove, the two terminal screws securing the black and white wires from the power cord.

Step 5



- Careful remove each wire from the power cord from underneath the terminals.

To reassemble your device, follow these instructions in reverse order.