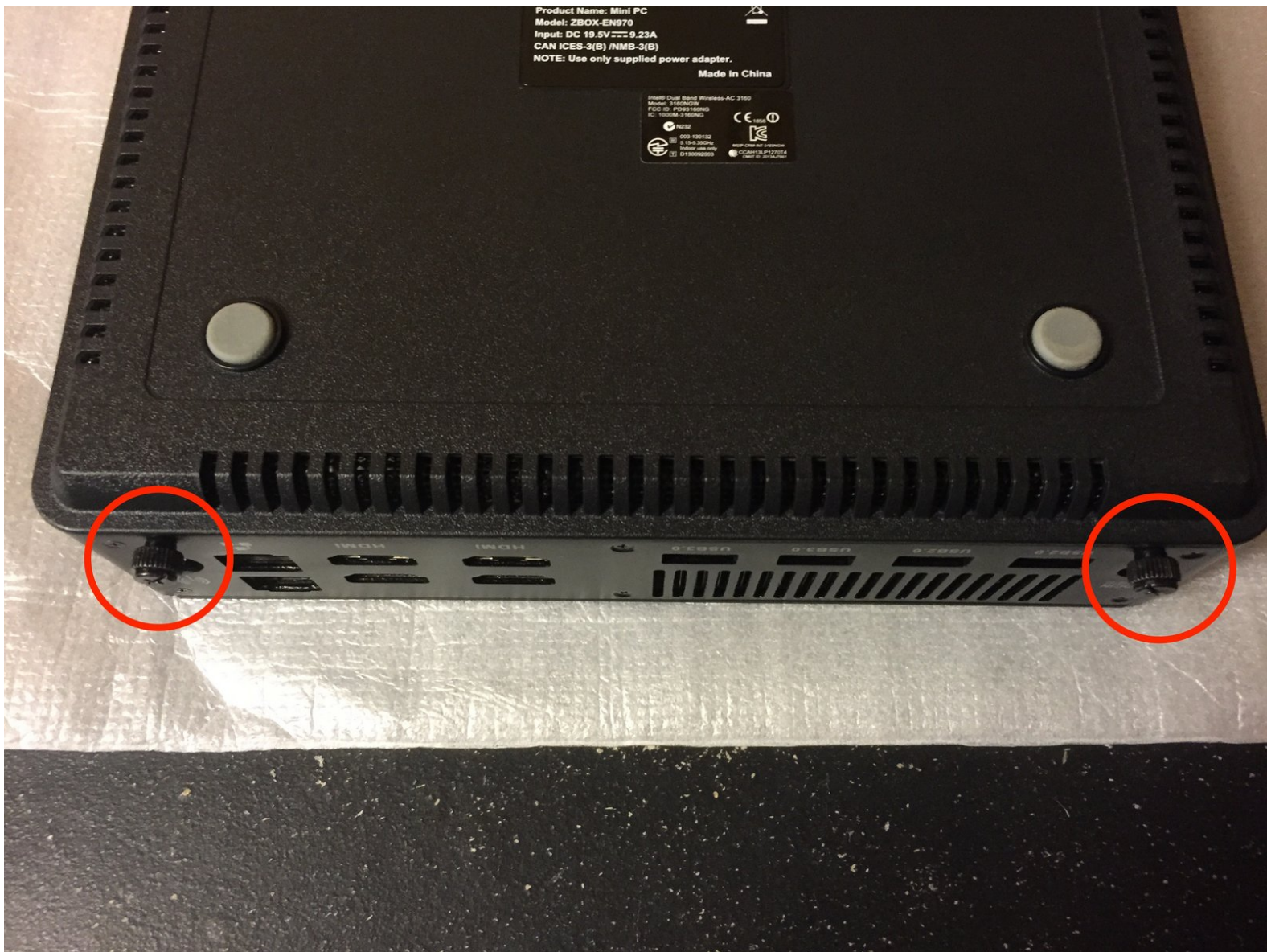




Zotac EN970 Storage Replacement

Zotac's bare bones machines come without hard drives or RAM. Here's how to install hard drive(s).

Written By: zdowns1



INTRODUCTION

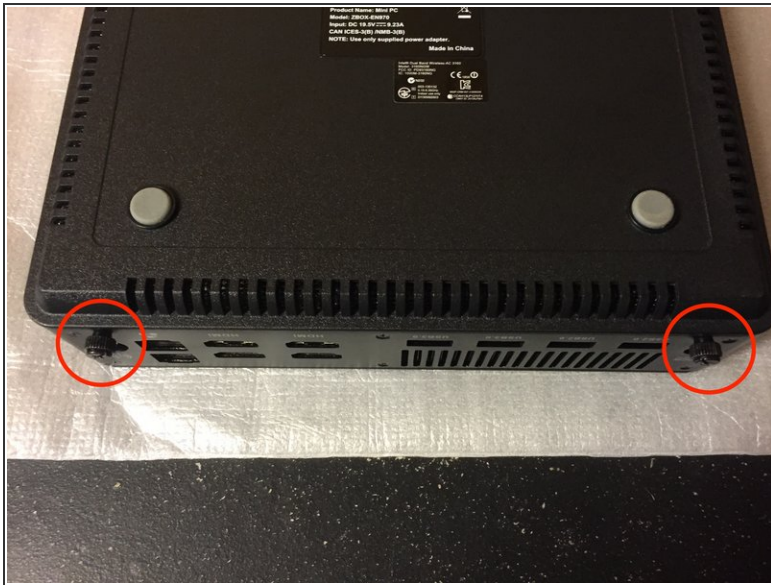
Zotac's bare-bones machines come without Internal Storage or RAM. Here's how to install the Internal Storage.



TOOLS:

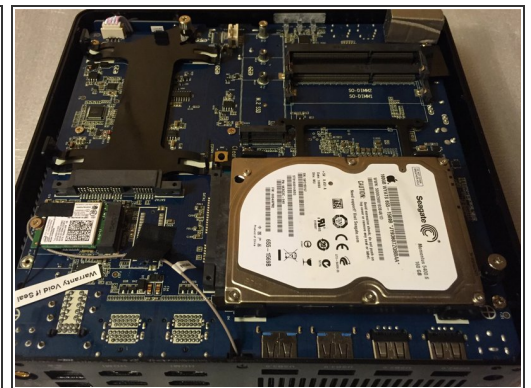
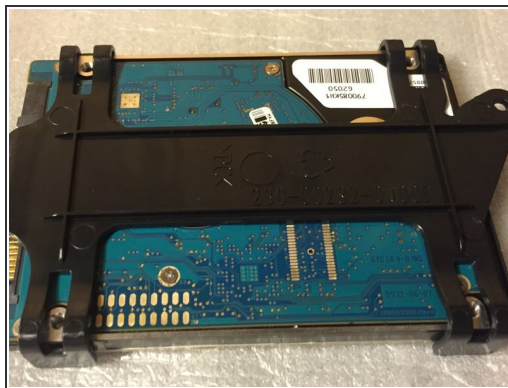
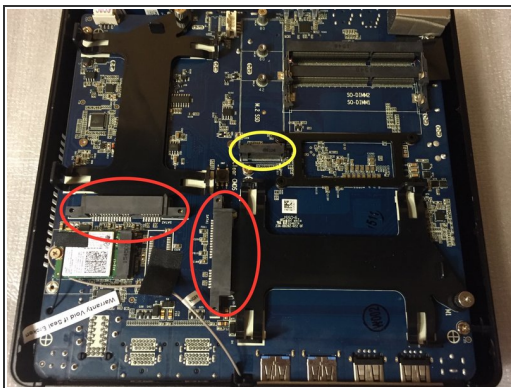
- [Phillips #1 Screwdriver](#) (1)
-

Step 1 — Opening your machine



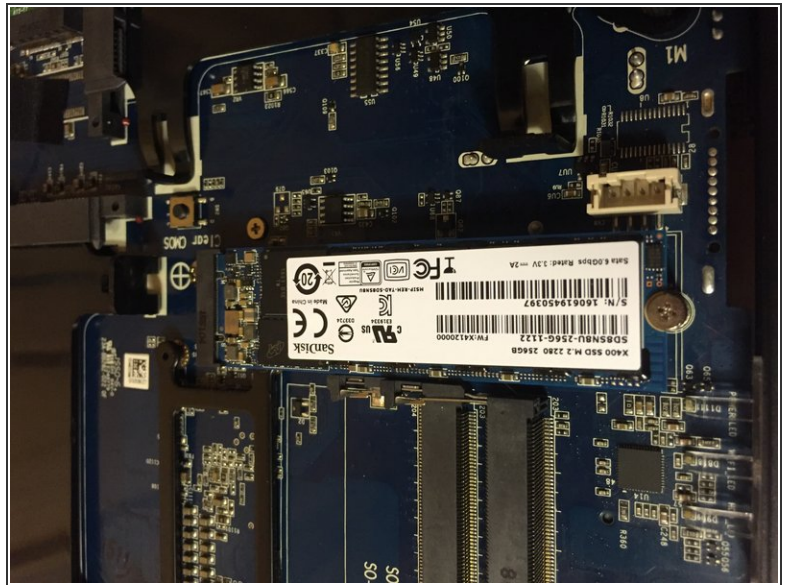
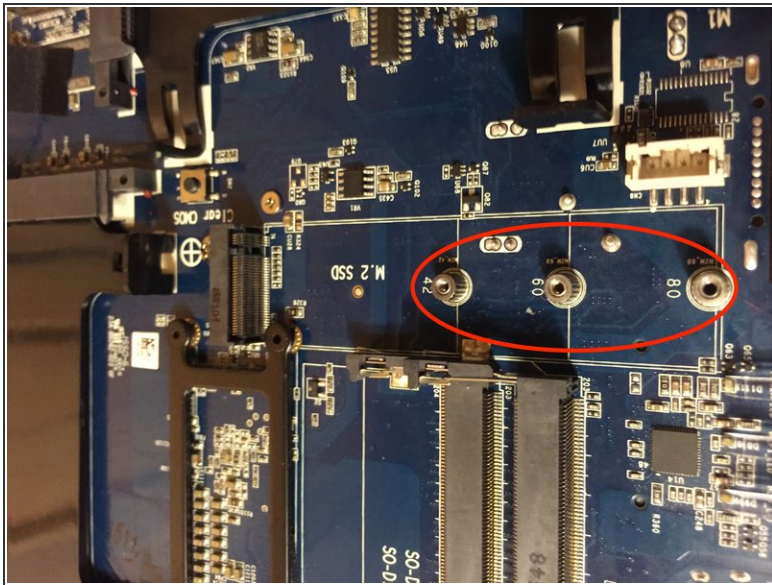
- Zotac uses thumb screws to secure the case. No tools required!
- After you remove the thumb screws, just slide the bottom cover away from you and lift it away.

Step 2 — Insert your drive



- The EN970 has three hard drive connectors: 2 2.5" bays and 1 M.2 bay.
- There are thumb screws for the 2.5" drives that secure plastic caddies that snap onto your drive

Step 3 — M.2 Drive



- The M.2 drive requires a phillips screwdriver for installation. Your ZBOX should have two screws inserted in two of the three pegs.
- Remove the screws, insert your drive and use one screw to secure it. Be sure not to over-tighten.

To reassemble your device, follow these instructions in reverse order.