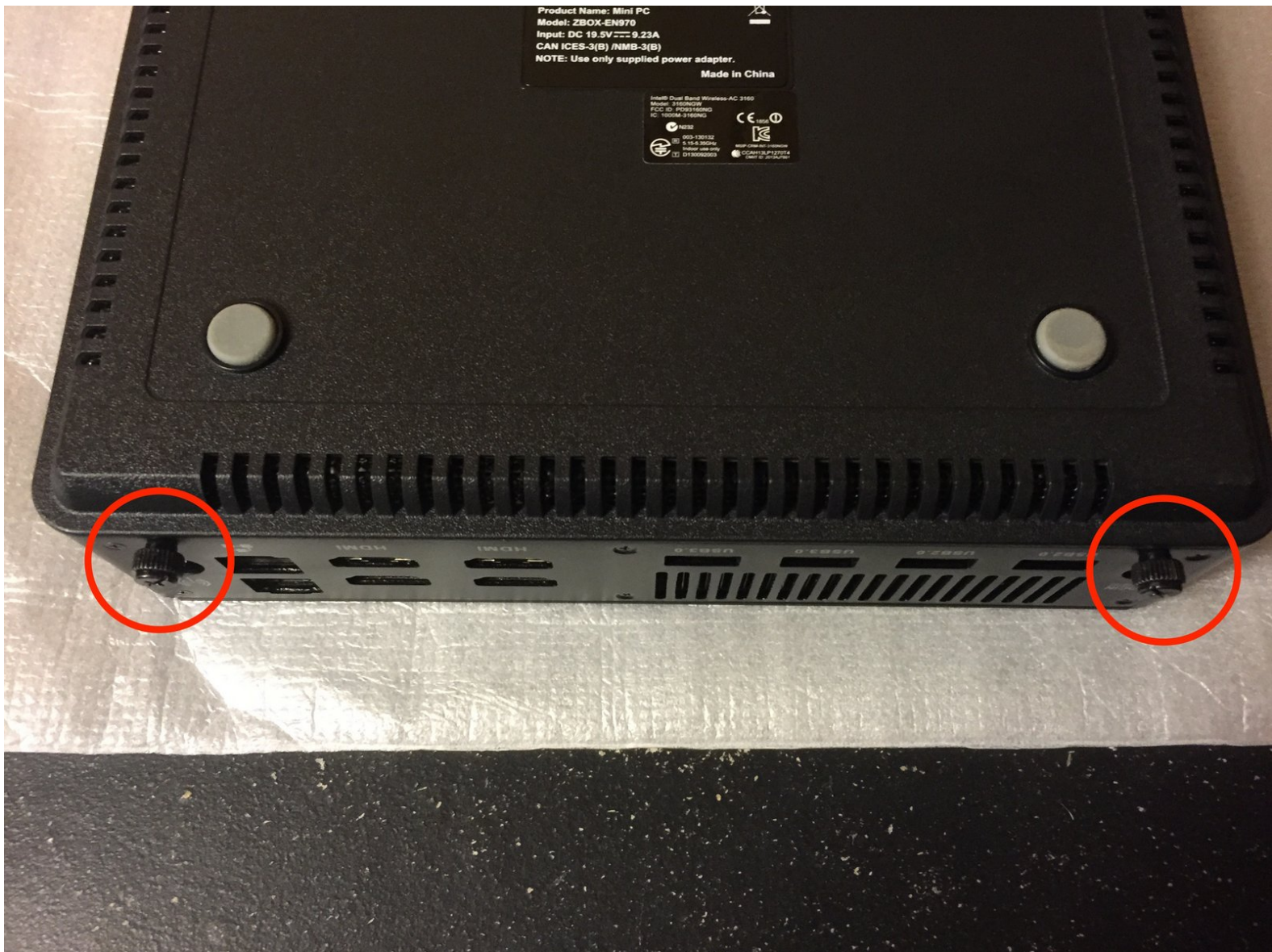




# Zotac EN970 RAM Replacement

Zotac's bare-bones machines ship without RAM or hard drives. You install your own RAM.

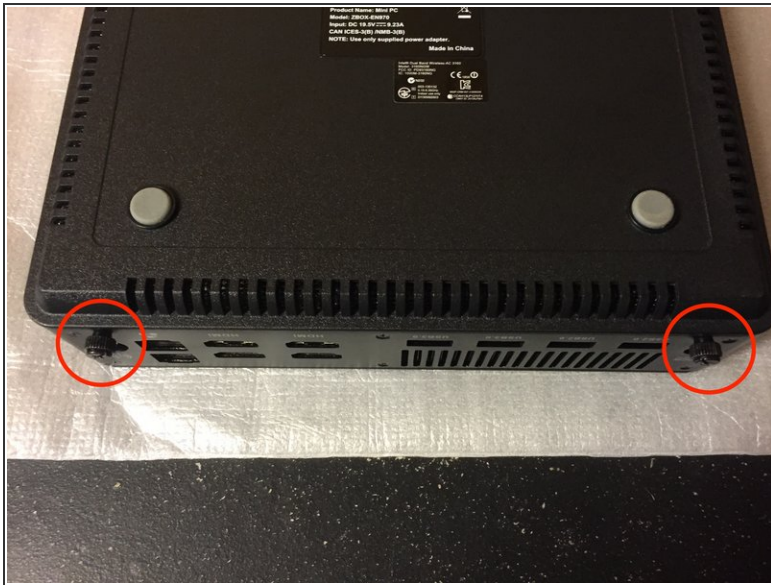
Written By: zdowns1



## INTRODUCTION

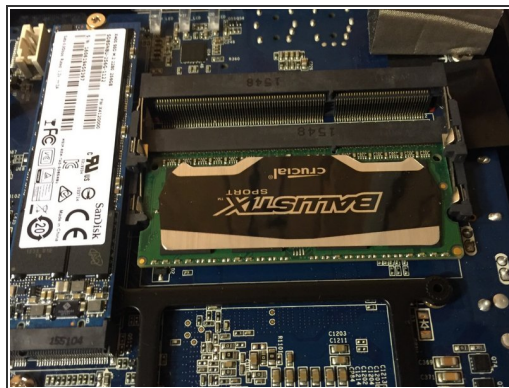
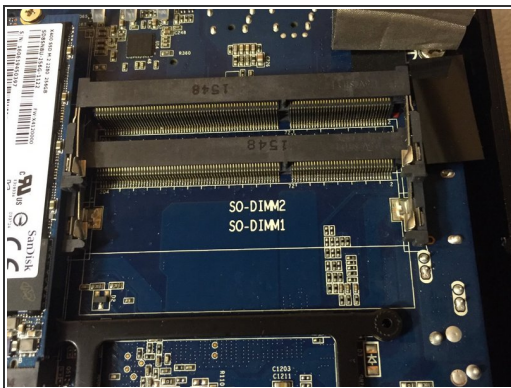
Zotac's bare-bones machines ship without RAM or hard drives. You install your own RAM.

## Step 1 — Opening your machine



- Zotac uses thumb screws to secure the case. No tools required!
- After you remove the thumb screws, just slide the bottom cover away from you and lift it away.

## Step 2 — Insert the RAM



- Your ZBOX has 2 SODIMM RAM slots and supports up to 16 gigabytes of RAM.
- Insert the RAM chips and press them gently down until the metal arms snap into place to secure them.

To reassemble your device, follow these instructions in reverse order.