



Cuisinart Griddler GR- 4N LED Light Replacement

This guide will show you how to replace the LED indication lights.

Written By: Kayla Londono



INTRODUCTION

If the indication lights on the Cuisinart Griddler GR- 4N have stopped working when your device is in use then the this guide will help you replace the LED lights.

TOOLS:

- [Phillips #2 Screwdriver](#) (1)
 - [Utility Scissors](#) (1)
-

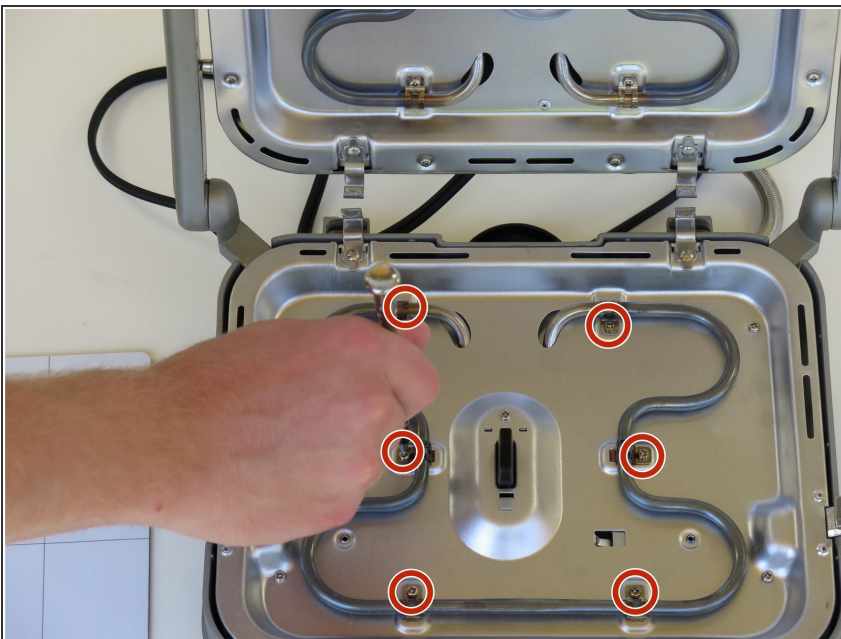
Step 1 — Cooking Surfaces



⚠ Ensure device is turned unplugged, cooled down and clean before attempting any replacements.

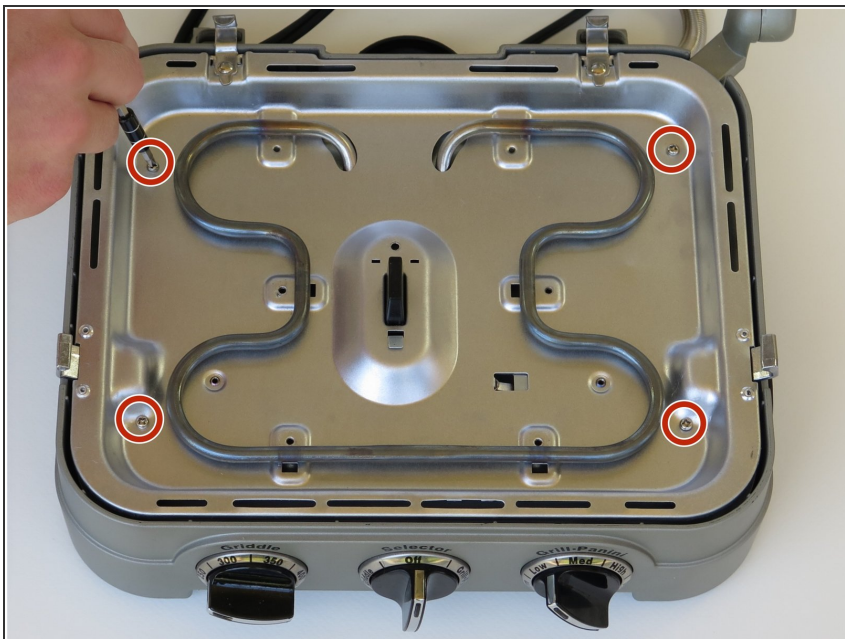
- Remove cooking plates by pushing in the tabs on each side of the plate at the same time.

Step 2



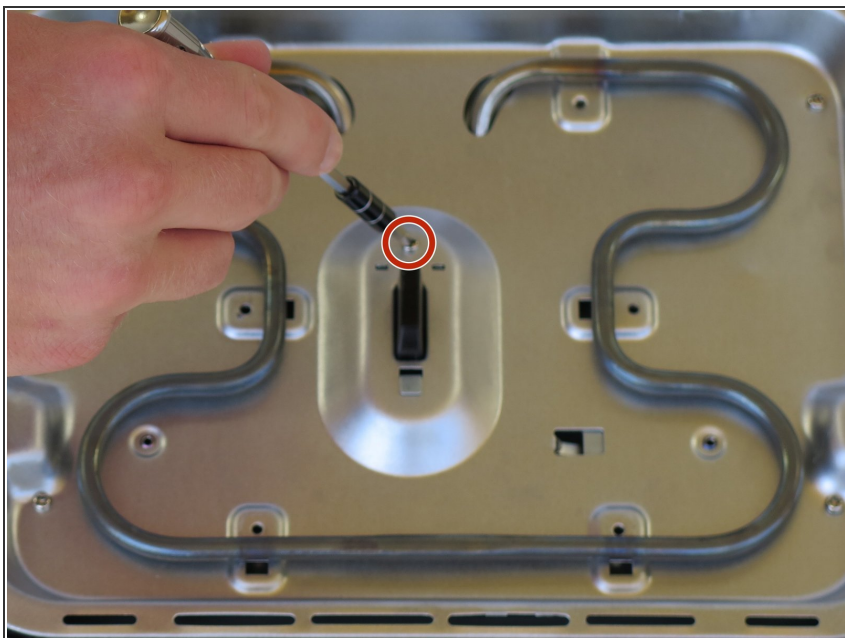
- Remove the six 5.5mm Phillips #2 screws that secure the bottom heating coil to the device.

Step 3



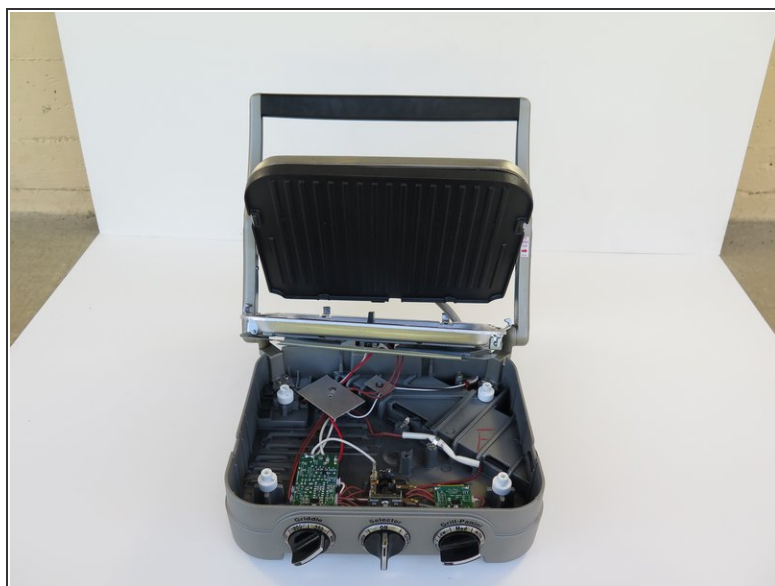
- Remove the four 30 mm Phillips #2 screws that secure the bottom heating apparatus.

Step 4



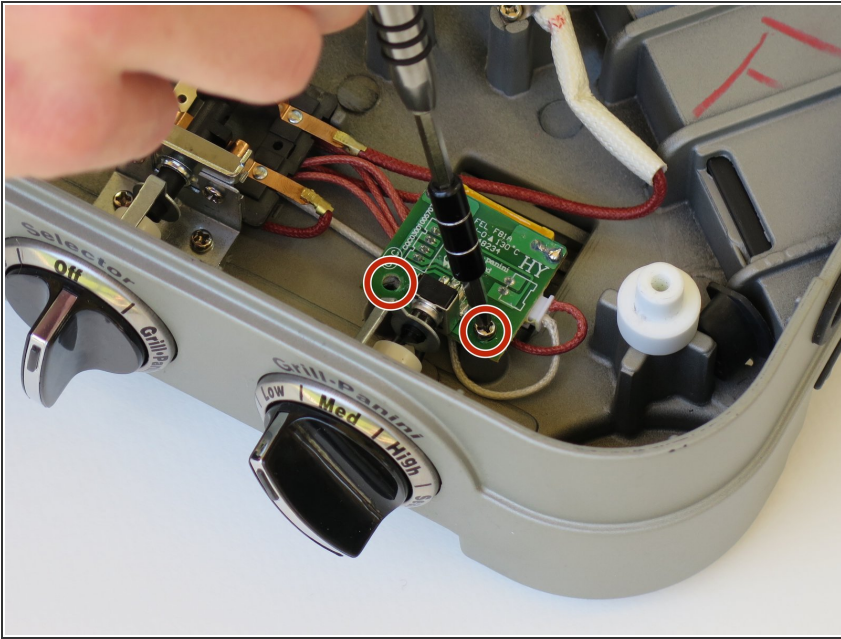
- Remove the single 5.5 mm Phillips #2 screw next to center black button.
- After removing the center screw the metal plate should be free to remove.

Step 5



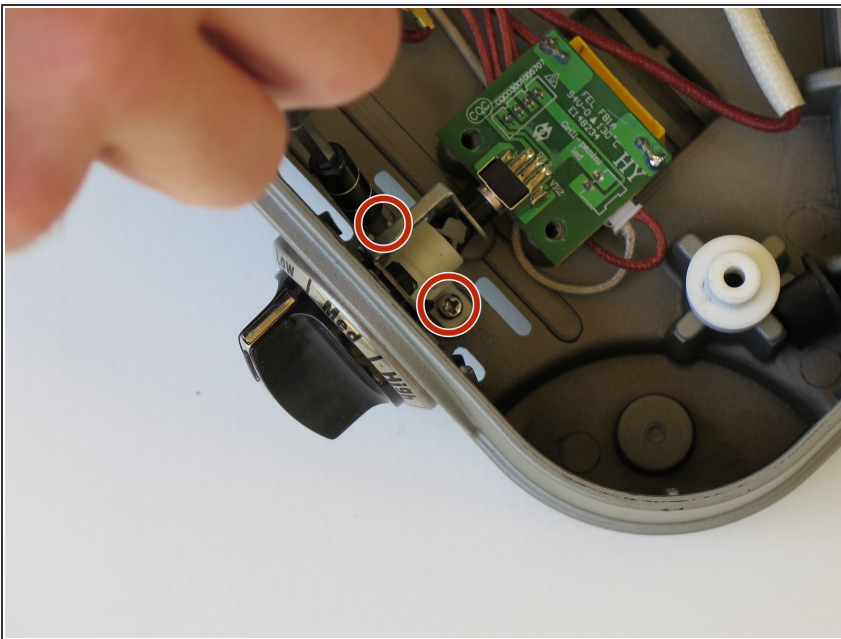
- Lift the bottom heating apparatus up and remove large black center piece by pushing down on black button while sliding out.
- Realign all surface and put device back together making sure all parts are lined up and heating surfaces are making contact.
- The aligned parts will allow the cooking surfaces to work properly.

Step 6 — Cuisinart Griddler GR- 4N Disassembly



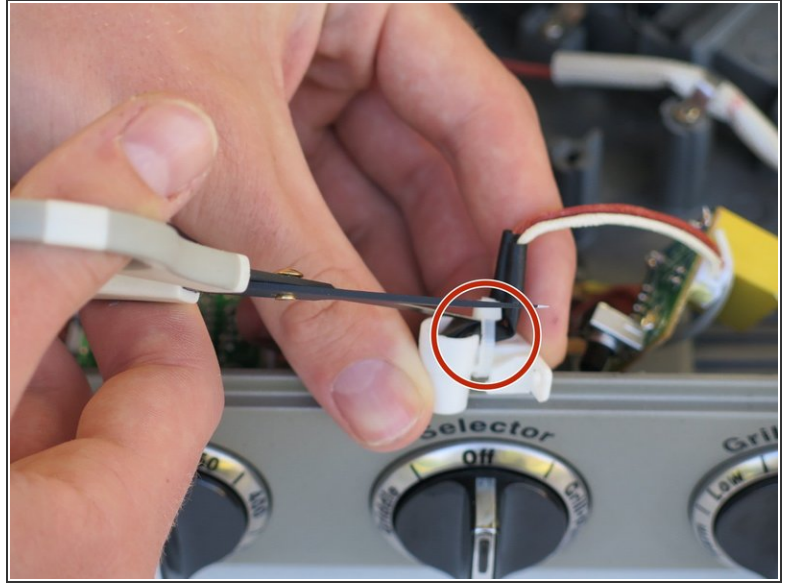
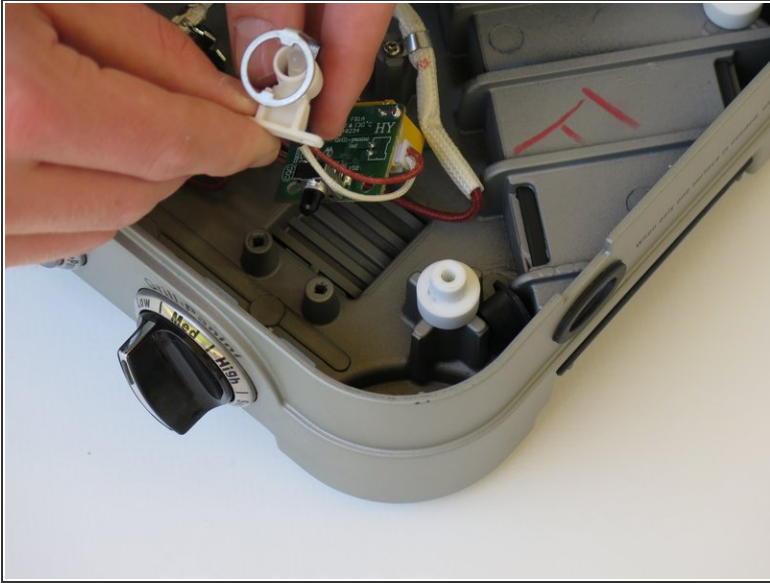
- Remove the two 6 mm Phillips #2 screws that secure the knob circuit board.
- Move the circuit board to the side so it is out of the way.

Step 7



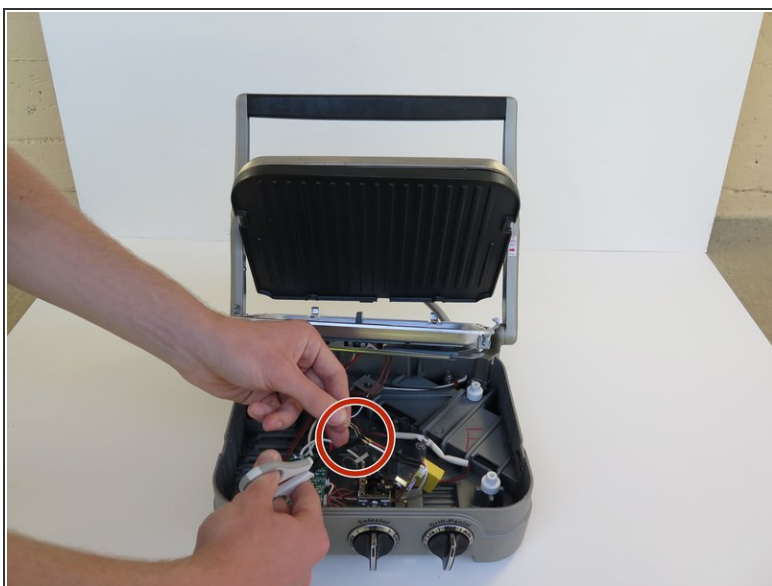
- Remove the two 6 mm Phillips #2 screws that secure the white plastic LED holder.

Step 8 — LED Light



- Cut the zip ties which hold the LED lights in place with scissors/knife.

Step 9



- Slide back black plastic covers and cut the two wires connected to the LED with a pair of scissors.
- The LED bulb should now be free to remove. In order to replace bulb you must solder the new LED into the existing wires.
- Upon soldering the LED will need to be zip tied back in place.

To reassemble your device, follow these instructions in reverse order.