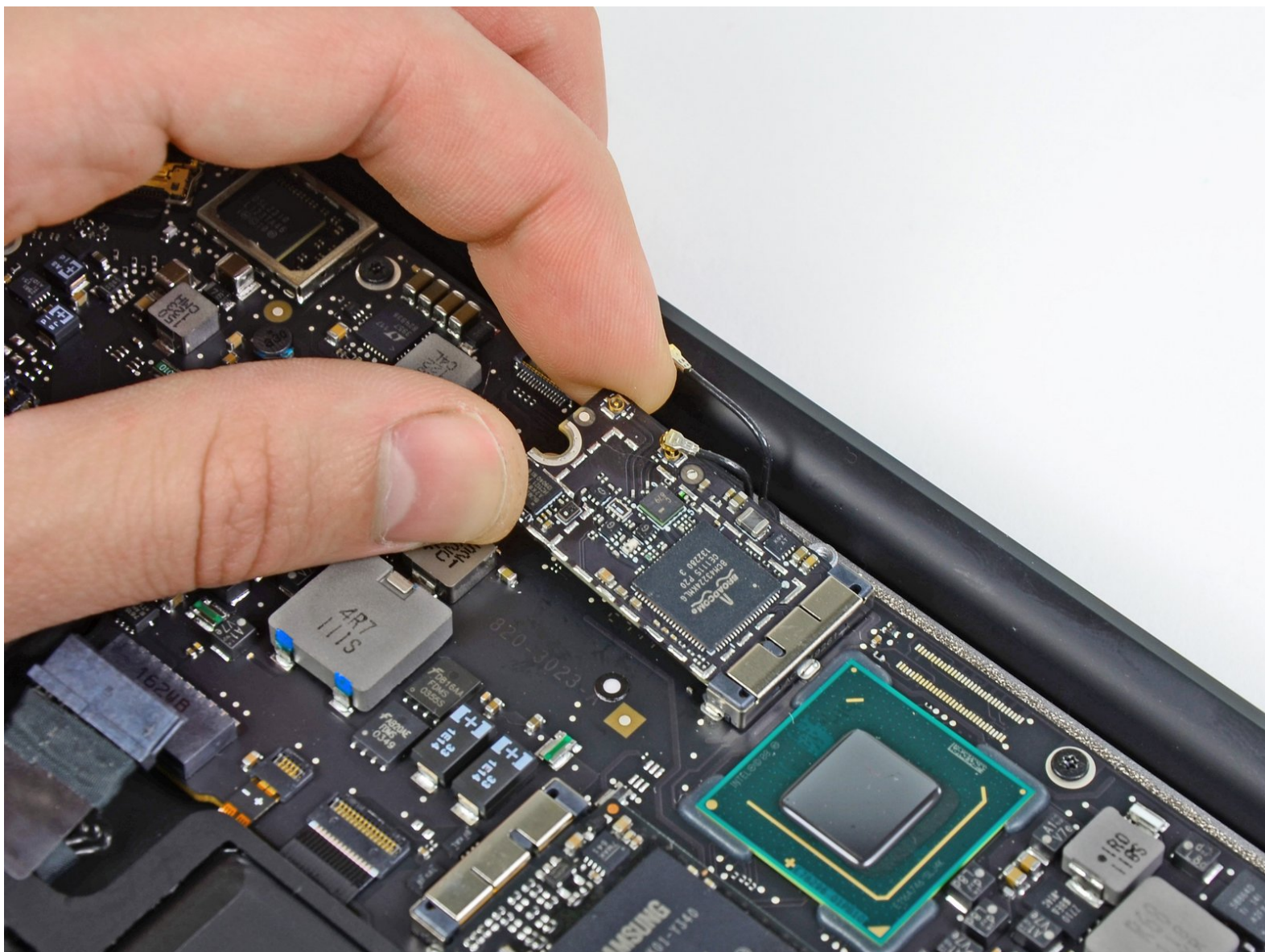




# MacBook Air 13" Mid 2011 AirPort/Bluetooth Card Replacement

Use this guide to replace a dead...

Written By: Andrew Bookholt



# INTRODUCTION

Use this guide to replace a dead AirPort/Bluetooth card to regain Wi-Fi capability.



## TOOLS:

- [P5 Pentalobe Screwdriver Retina MacBook Pro and Air](#) (1)
- [Spudger](#) (1)
- [T5 Torx Screwdriver](#) (1)



## PARTS:

- [MacBook Air \(Late 2010/Mid 2011\) AirPort/Bluetooth Board](#) (1)

## Step 1 — Lower Case



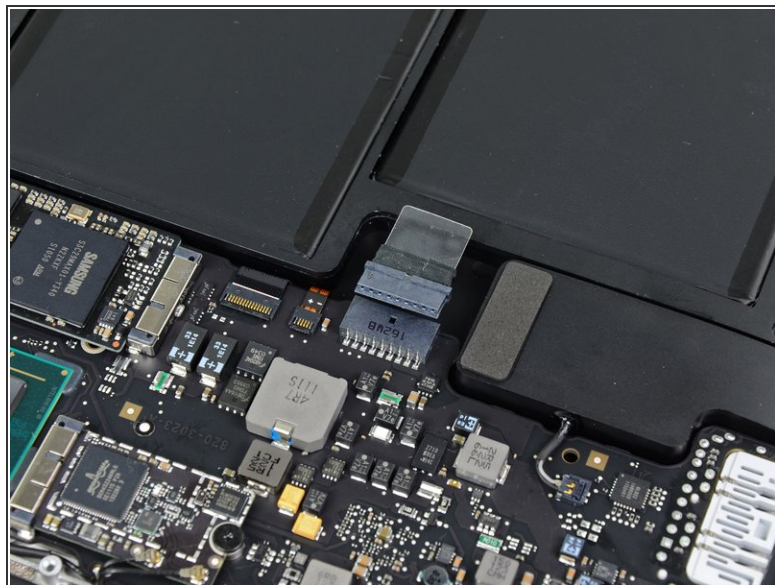
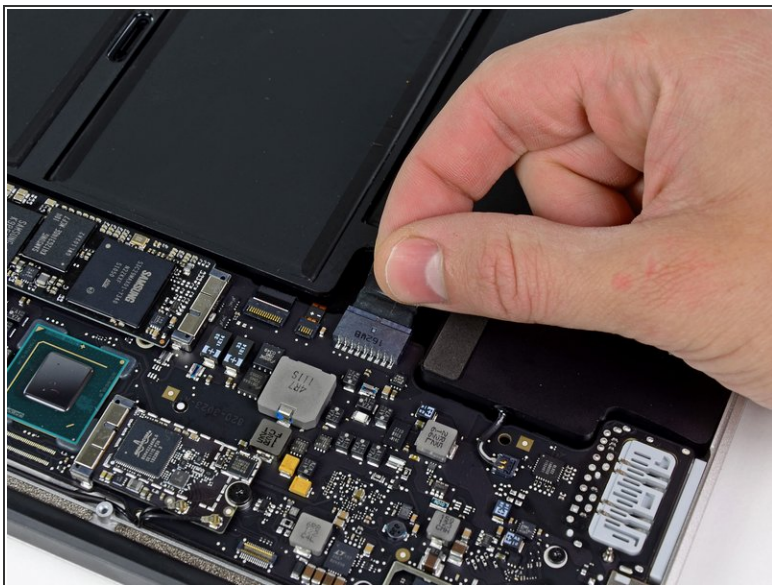
- **i** Before proceeding, power down your MacBook. Close the display and lay it on a soft surface, top-side down.
- Use a [P5 Pentalobe](#) driver to remove ten screws securing the lower case, of the following lengths:
  - Two 9 mm screws
  - Eight 2.6 mm screws

## Step 2



- Wedge your fingers between the display and the lower case and pull upward to pop the lower case off the Air.
- Remove the lower case and set it aside.

## Step 3 — Battery Connector



- i** As a precaution against accidental discharge or shock, disconnect the battery connector from the logic board.
- Grab the clear plastic pull tab attached to the battery connector and pull it toward the front edge of the Air to disconnect the battery from the logic board.
- !** Be sure to pull the connector horizontally toward the battery, and not straight up from the Air, or you may damage the socket on the logic board.

## Step 4 — AirPort/Bluetooth Card



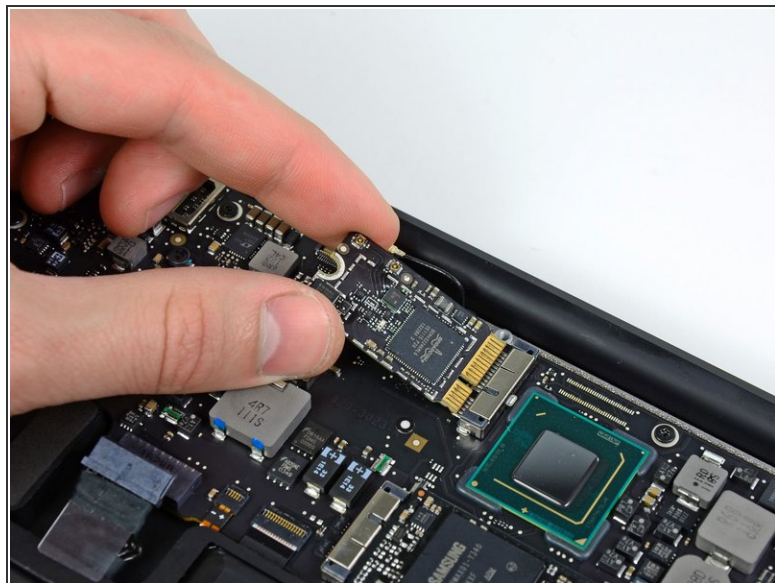
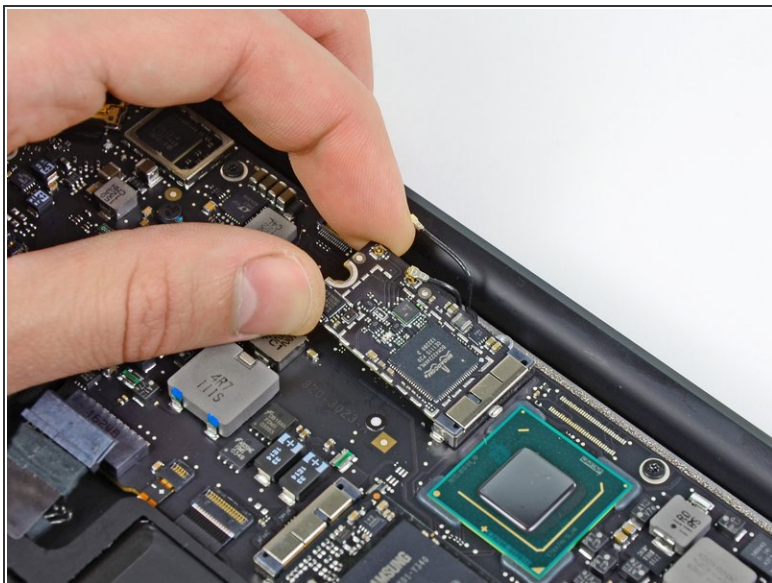
- Use the flat end of a spudger to pry both antenna connectors up from their sockets on the AirPort/Bluetooth card.

## Step 5



- Remove the single 2.9 mm T5 Torx screw securing the AirPort/Bluetooth card to the logic board.

## Step 6



- Slightly lift the free end of the AirPort/Bluetooth card and pull it out of its socket on the logic board.

**⚠ To avoid damaging its socket on the logic board, do not excessively lift the free end of the AirPort/Bluetooth card.**

- Remove the AirPort/Bluetooth card from the Air.