



# AT&T NVG510 Button Replacement

This guide will show you how to locate, remove,...

Written By: Shawn Rogers



# INTRODUCTION

This guide will show you how to locate, remove, and replace the buttons on the AT&T NVG510 modem. In the event that a button becomes stuck or your router becomes unresponsive when you press a button, you may need to replace it. This guide does require you to be able to operate a [soldering iron](#) carefully.

---

## TOOLS:

Lead-Free Solder (1)

Screwdriver (1)

2.0 flathead bit (1)

---

## Step 1 — Reset and Wi-Fi Buttons



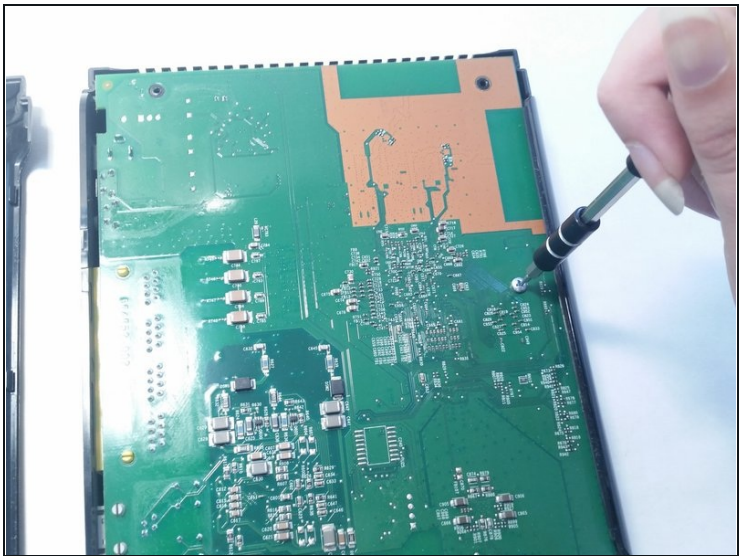
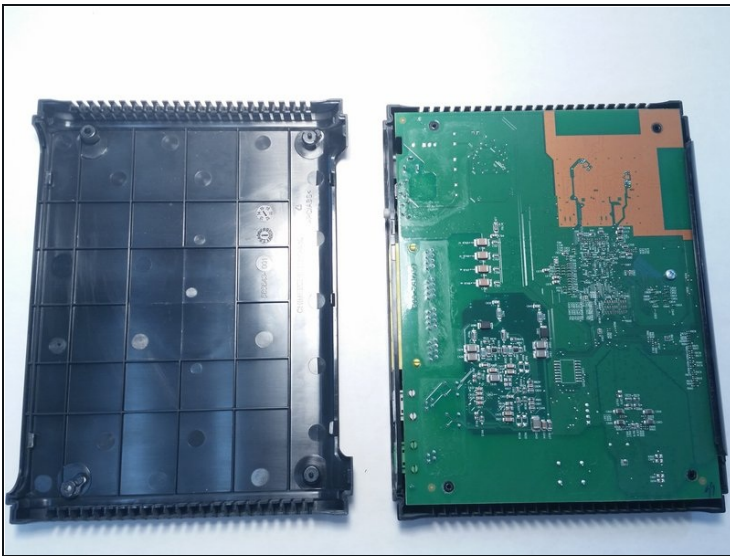
- Place the router on one side so that the rubber stands are facing upward.
- Remove the stands from the left corners only, relative to the AT&T logo if facing upright.

## Step 2



- Remove two screws using a [2.0 flathead](#) screwdriver.

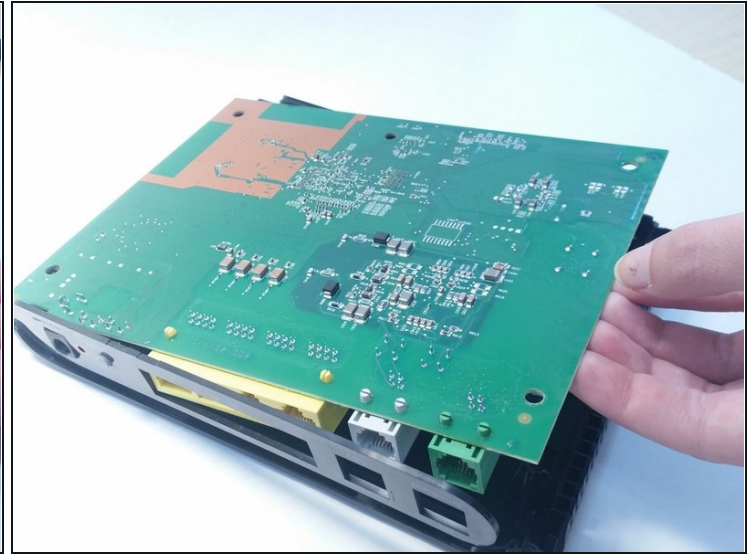
## Step 3



- Pry open the case to reveal the board.
- ① Some force may be required.
- Take out the one screw located on the center-right area of the board.



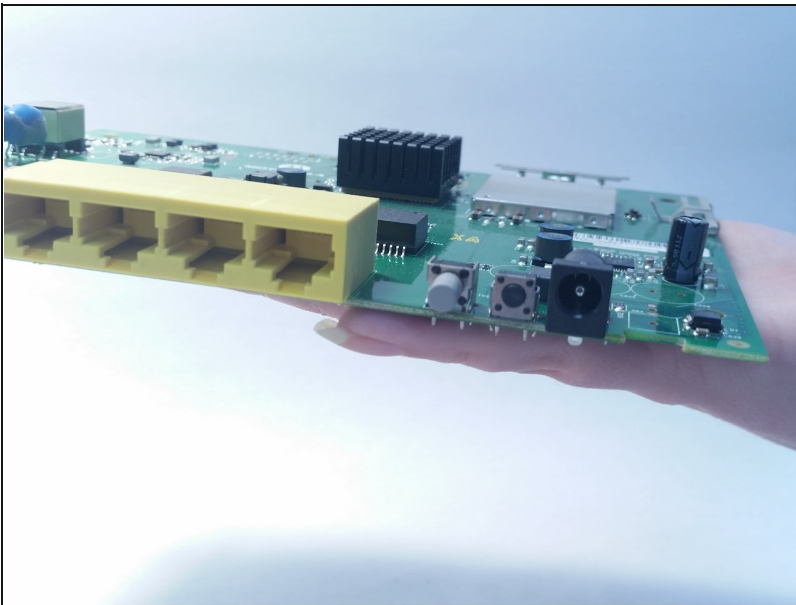
## Step 4



- Lift the board slowly out of the case.

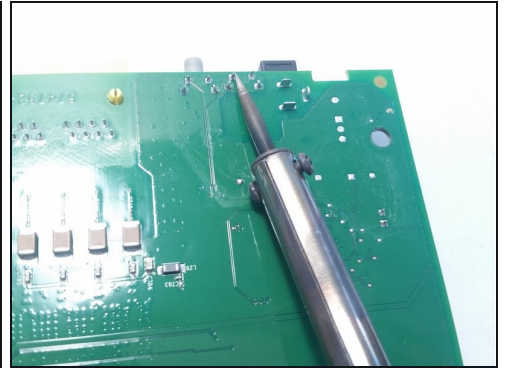
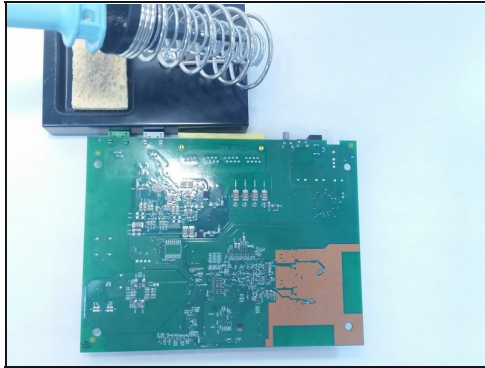
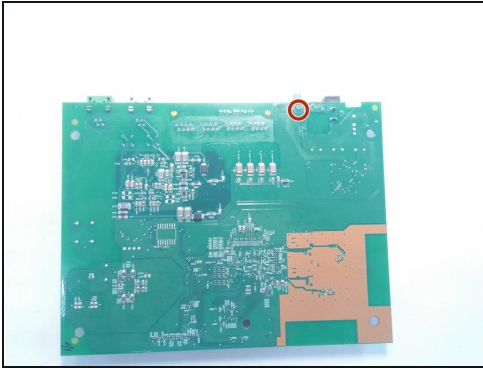
⚠ Be careful as to not damage the board.

## Step 5



- Locate the buttons to the right of the yellow ports along the edge of the board.

## Step 6



- Locate the silver points that connect the buttons to the board.
- To release the buttons, use a soldering iron to heat up and melt the silver connecting points.

**⚠ Avoid touching the solder to the board. Touch only the silver points.**

---

To reassemble your device, follow these instructions in reverse order.