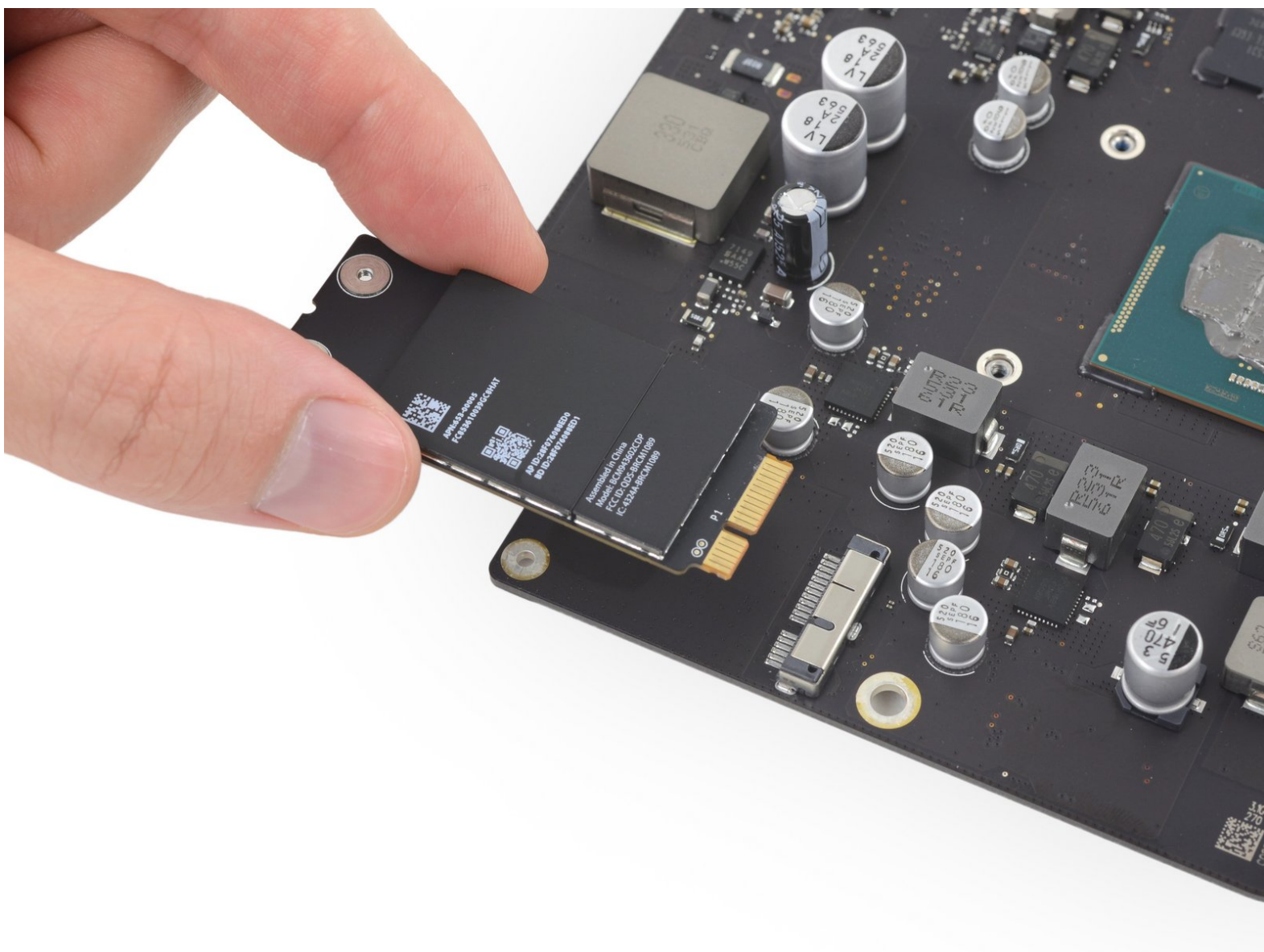




iMac Intel 21.5" Retina 4K Display AirPort/Bluetooth Card Replacement

Prereq for removing the AirPort card from the logic board.

Written By: Evan Noronha



INTRODUCTION

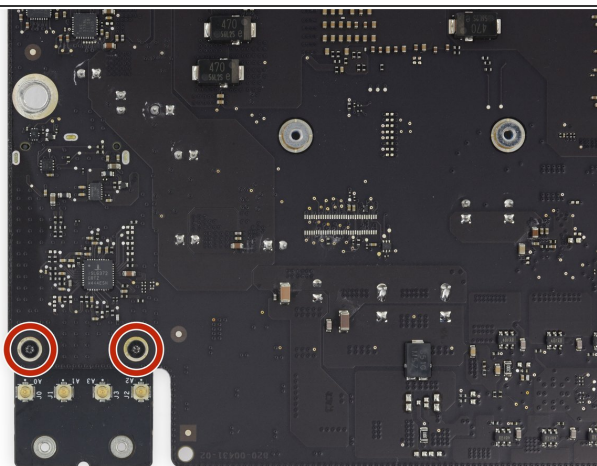
Prereq only for removing the AirPort/Bluetooth card from the logic board.



TOOLS:

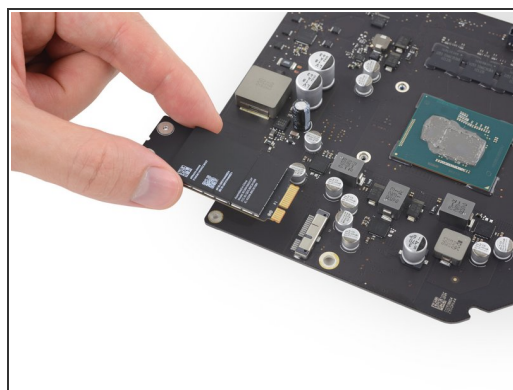
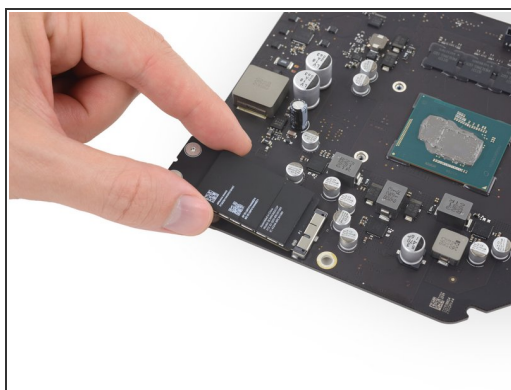
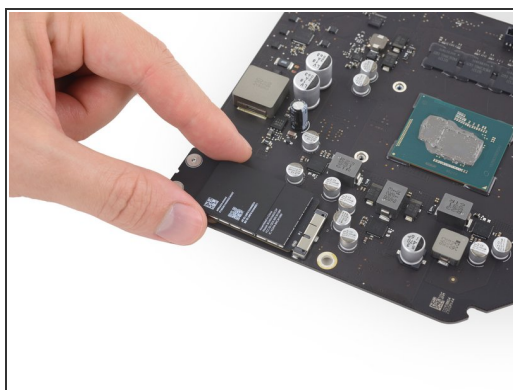
- [T5 Torx Screwdriver](#) (1)
-

Step 1 — AirPort/Bluetooth Card




- Remove the two 3.3 mm T5 Torx screws securing the AirPort/Bluetooth card to the logic board.


Step 2



- Slightly lift the AirPort/Bluetooth card and pull it straight out its socket.

 Do not use excessive force to pull the end of the AirPort/Bluetooth card away from its socket on the logic board. Doing so may damage the socket.

 When reinstalling the card, be sure it is properly seated before reinstalling the retaining screws.

 If the AirPort/Bluetooth card is properly seated, its screw holes should align with those on the logic board.

To reassemble your device, follow these instructions in reverse order.