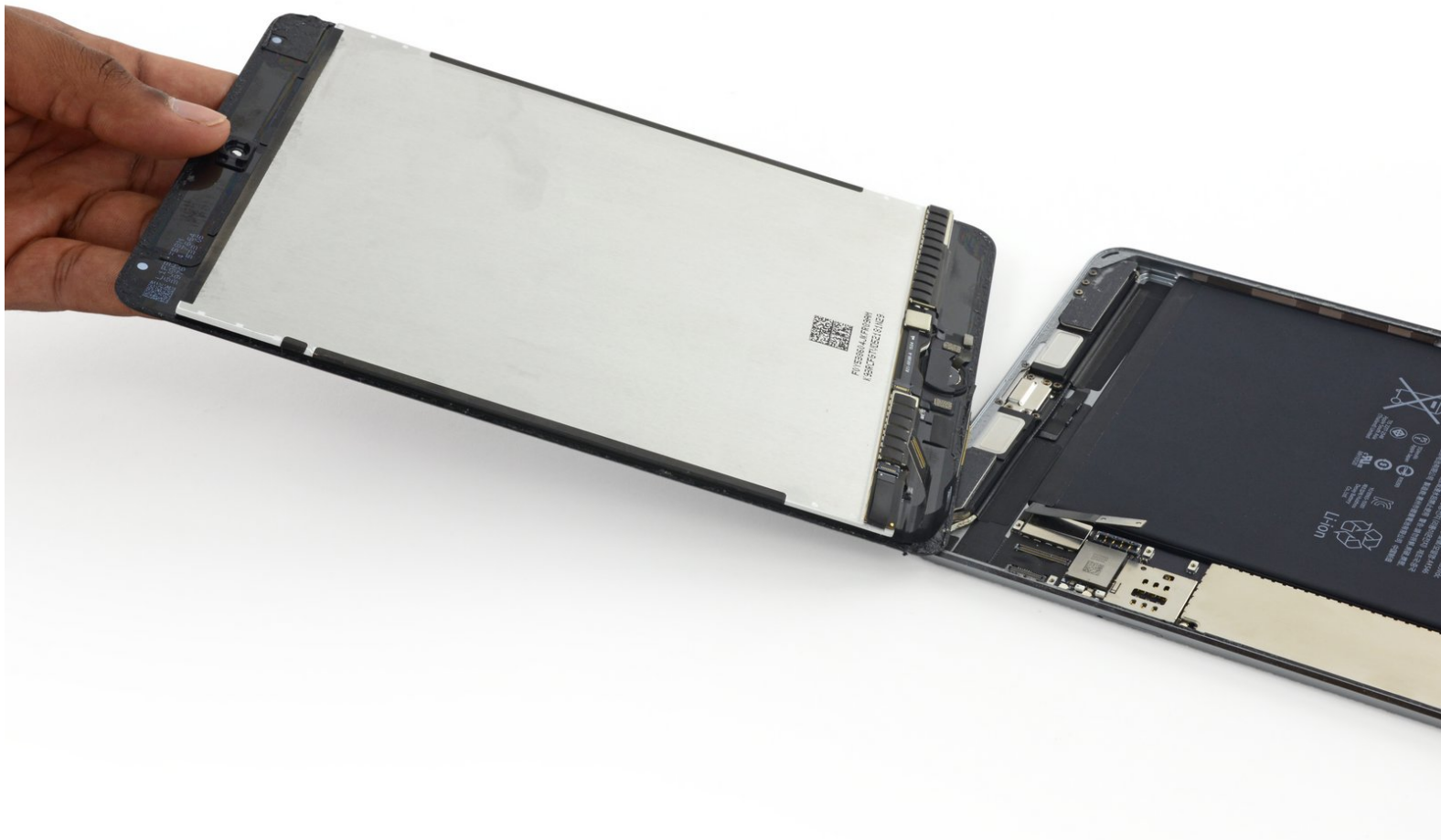




# iPad mini 4 LTE Display Assembly Replacement

Prerequisite guide for replacing a screen and digitizer, or home button.

Written By: Evan Noronha



# INTRODUCTION

prereq only guide for replacing a screen and digitizer, or home button.

---

## TOOLS:

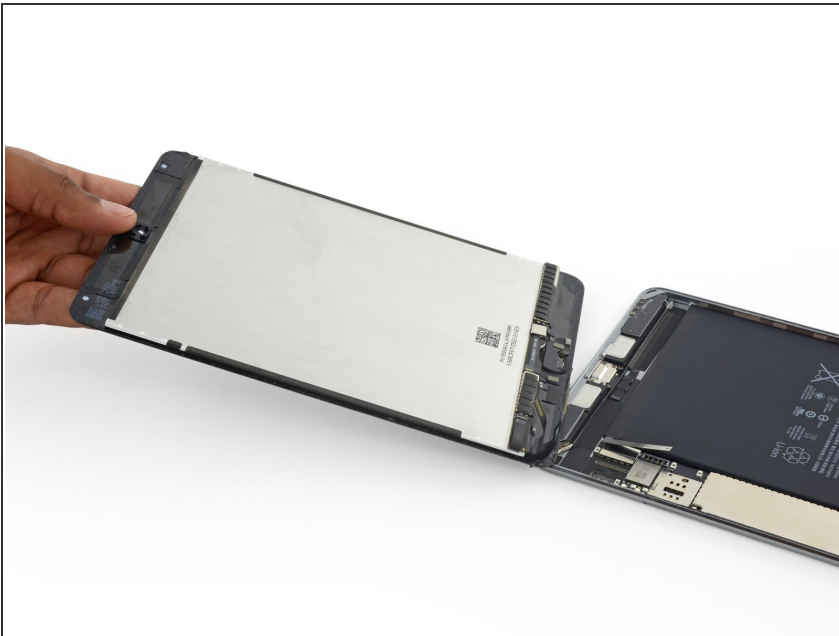
- [iFixit Opening Picks set of 6](#) (1)
  - [Suction Handle](#) (1)
  - [iOpener](#) (1)
  - [Phillips #00 Screwdriver](#) (1)
  - [Spudger](#) (1)
-

## Step 1 — Display Assembly



- Use the pointed end of a spudger to disconnect the display data connector from its socket on the logic board.
- Use the pointed end of a spudger to disconnect the digitizer cable connector from its socket on the logic board.
- ☑ When reconnecting these, press down from one end of the connector to the other. If you press in the middle of the connector, you may bend it, causing damage or a poor connection.

## Step 2



- Remove the display assembly.
- ☑ To reinstall your display assembly, you will need to replace the display adhesive. Use our [display adhesive application guide](#) to reapply your display adhesive and reseal your device.

To reassemble your device, follow these instructions in reverse order.