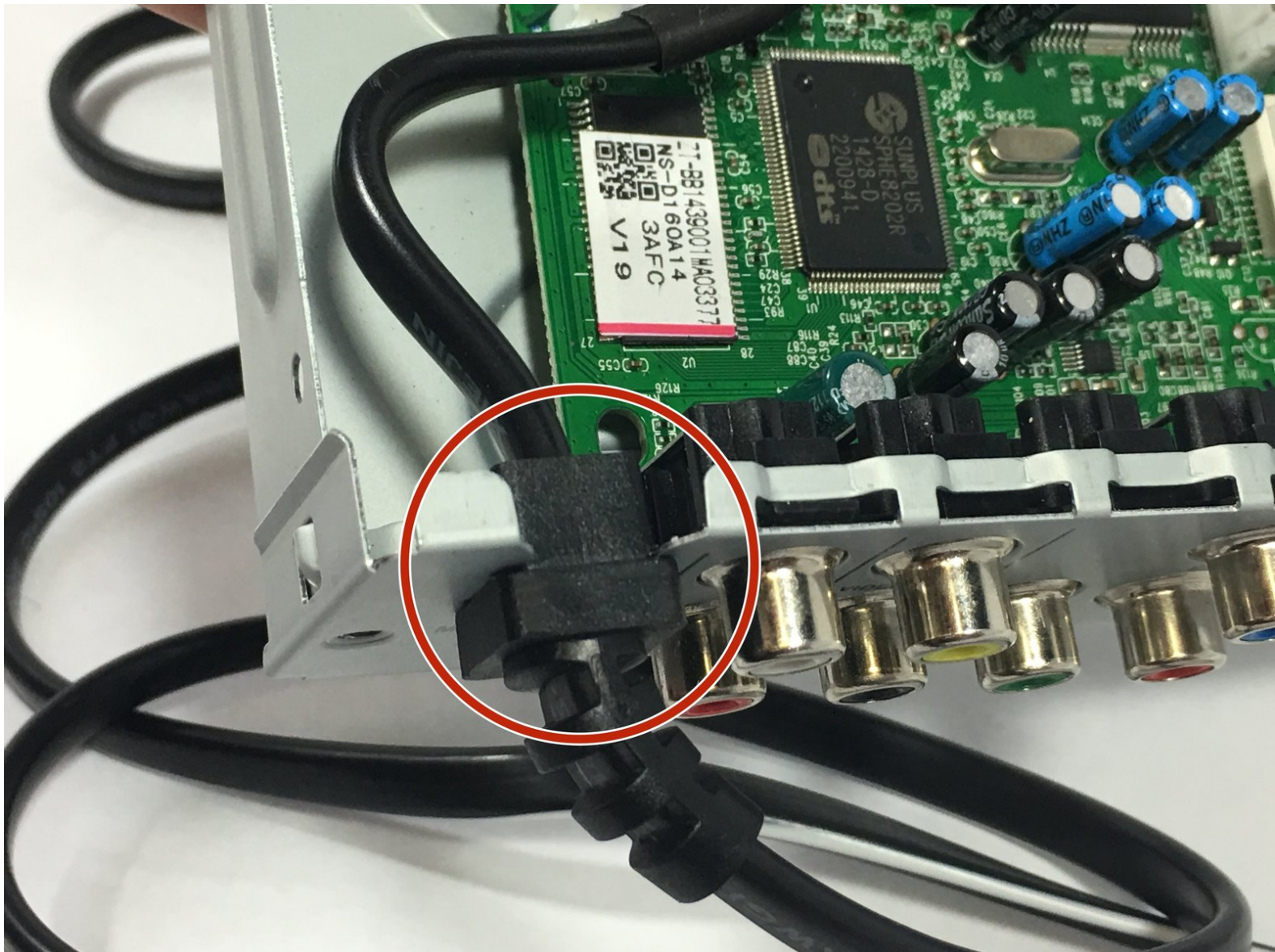




# Insignia NS-D160A14 Power Cord Replacement Guide

This guide details the steps required to replace the Insignia NS-D160A14 power cord.

Written By: Ian Hanken



---

## INTRODUCTION

The power cord is a 110 Volt small appliance pigtail that is factory assembled to the DVD player.

If the power cord needs to be replaced, this technical guide will show the steps needed to properly get it done. The process is fairly straight forward and not difficult.

**Note: Unplug the power cord before proceeding to remove it from the DVD player.**

---



### TOOLS:

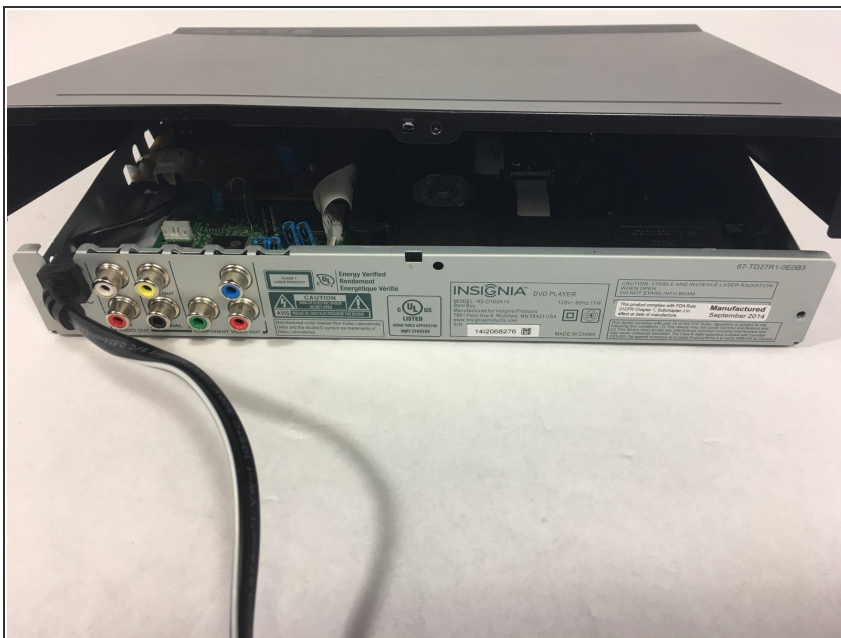
- [Phillips #2 Screwdriver](#) (1)
-

## Step 1 — Outer Case



- ⚠ Unplug the power cord before proceeding to open the DVD player's enclosure.
- Remove the two 7mm Phillips #2 screws from the back of the DVD player.

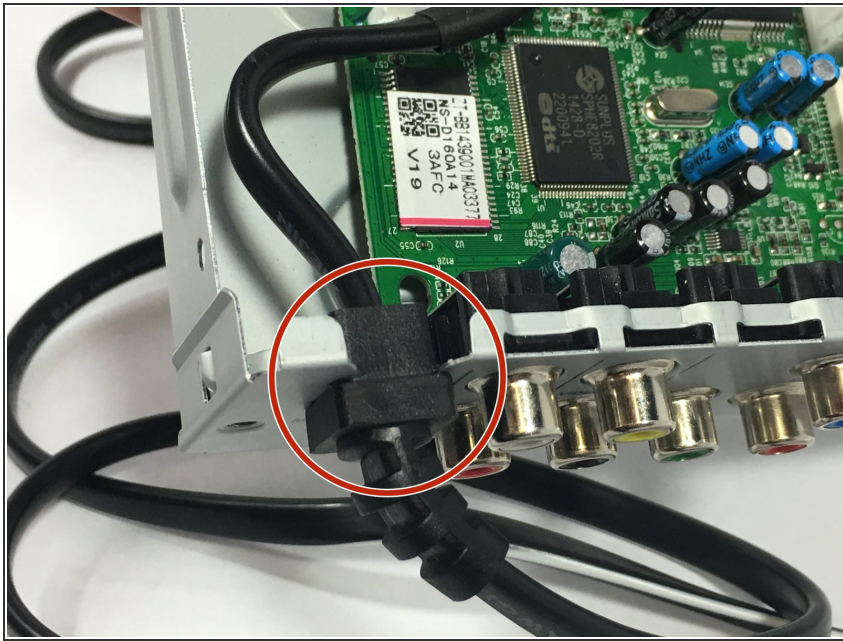
## Step 2



- Carefully lift the outer case up, starting from the back.
- ⓘ Removing the outer case may require some force, and you will need to get the case into an angled position compared to the rest of the DVD player before it can be completely separated.

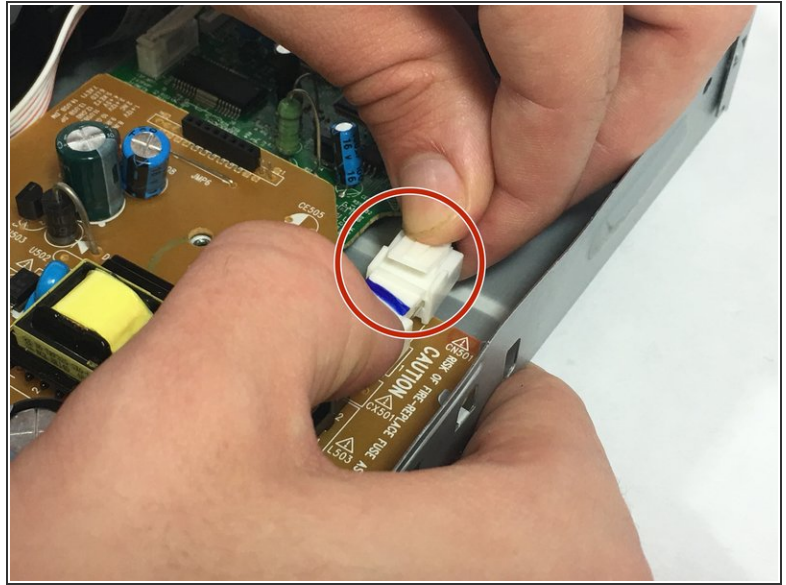
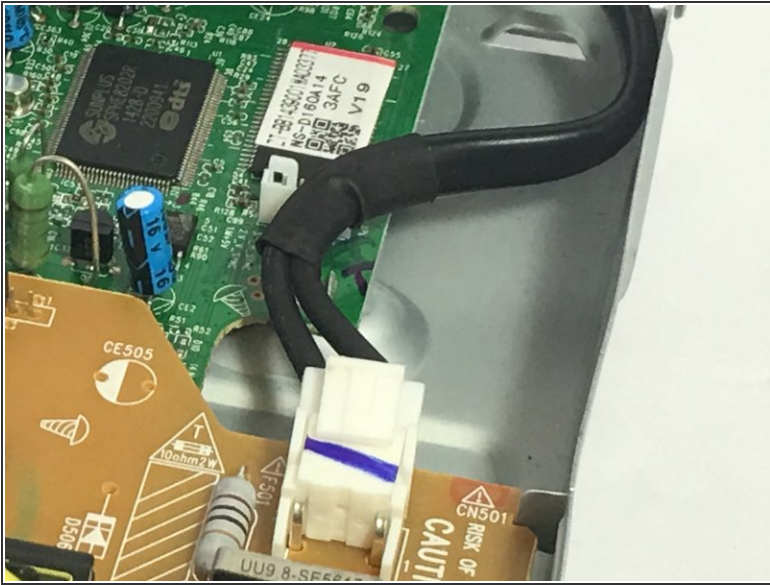


## Step 3 — Power Cord



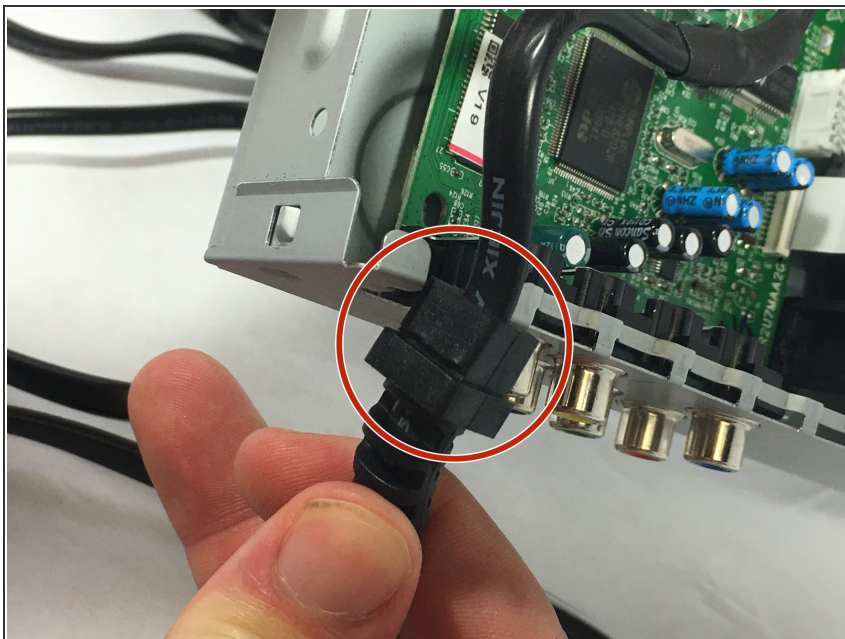
- The power cord has a molded connector that fits in a slot punched out of the back left corner of the DVD player near the A/V jacks.
  - There are no screws that fasten the power cord connector to the DVD player's enclosure.
- ⚠ Be careful not to cut yourself on the potential sharp edges of the DVD player's contoured enclosure.

## Step 4



- The power cord's white plastic plug is located on the DVD player's mother board.
  - Unsnap the power cord's white plastic plug from the mother board, and gently slide the male and female white plastic plug connections apart.
- ⚠ Be careful not to be too rough when disconnecting the white plastic plug from the motherboard; the motherboard could be easily damaged.

## Step 5



- Firmly grasp the power cord's molded connector with two fingers and slide up.
- Finally, remove the power cord from the DVD player's assembly.
- ⓘ As you slide the power cord's molded connector, you may need to gently wiggle it about to help facilitate its removal.

To reassemble your device, follow these instructions in reverse order.