



Palm m105 case replacement

This guide demonstrates how to replace the case...

Written By: Travis



INTRODUCTION

This guide demonstrates how to replace the case of your Palm m105. The case on the Palm m105 can be easily removed, and a replacement shell casing can be used to replace your damaged one.

Before you begin this repair, power off your device and make sure it's unplugged from the charger.

TOOLS:

[T5 Torx Screwdriver](#) (1)

Step 1 — Palm m105 case replacment



- Remove the protective flip lid of the device. Open the lid and pull.
- ⓘ There are two clips that will pop out.

Step 2



- Unclip the tab at the top of the device, to remove the face plate.

Step 3



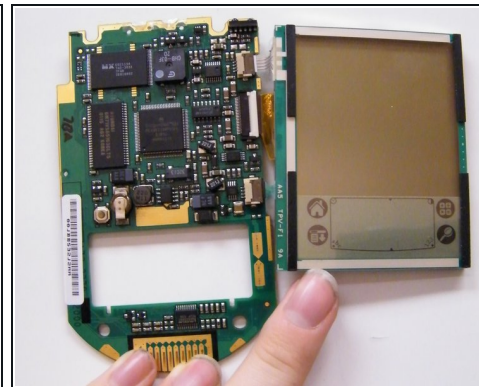
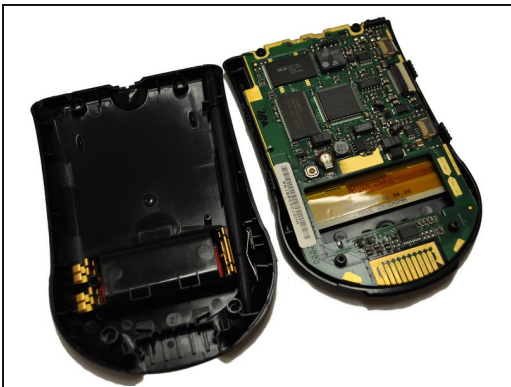
- Remove the batteries by opening the battery compartment on the back of the device.
- Remove one battery at a time.

Step 4



- Using a T-5 Torx screwdriver, remove all four screws at the back of the device by turning them counterclockwise. A sample screwdriver is located here.

Step 5



- Remove the back and front cover from the interior parts of the device.

Step 6



- This is what the case of the device should look like when completed.
- You can purchase a new shell here: [Replacement Shell Palm m105](#)

To reassemble your device, follow these instructions in reverse order.