



# Dell E193FPc Display Bezel Replacement

Use this guide to replace a damaged display bezel.

Written By: Mackenzie Keane



---

# INTRODUCTION

Use this guide to replace a damaged display bezel.



## TOOLS:

- [Phillips #2 Screwdriver](#) (1)
  - [iFixit Opening Tool](#) (1)
-

## Step 1 — Stand



- Lay the monitor screen-down so the back screws are exposed.
- Remove the four 11.9 mm Phillips #2 screws securing the stand to the back of the monitor.

## Step 2



- Gently lift and pull away the stand at a slight angle away from the monitor.

## Step 3 — Display Bezel



- Locate the two holes on the bottom of the monitor.
- Insert a plastic opening tool or spudger into the holes and gently pry the plastic apart along the groove.
- ⓘ This task is much easier if two people pry simultaneously at each hole.
- Continue prying along the entire edge of the monitor.

## Step 4



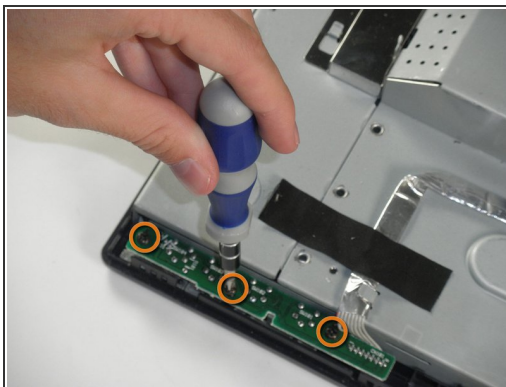
- When finished prying, the plastic will partially fall away from the rest of the monitor.

**⚠ Do not try to fully remove the front frame yet. The frame is still attached to the buttons.**

- While holding the frames together, carefully flip the monitor over so it faces screen down.
- Gently lift and remove the rear case from the monitor.



## Step 5



- Locate the green interface button board.
- Remove the three 9.71 mm Phillips #2 screws holding the interface button board to the display bezel.
- Lift the monitor interior away from the front cover.

To reassemble your device, follow these instructions in reverse order.