



HTC Maple 100 Keyboard Replacement

This guide will help you install a new HTC Maple 100 keyboard.

Written By: Nick



INTRODUCTION

This guide will help you install a new keyboard in your HTC Maple 100. As you move through the process, be careful with the keyboard. It is fragile.

TOOLS:

- [Phillips #00 Screwdriver](#) (1)
 - [iFixit Opening Tools](#) (1)
 - [T6 Torx Screwdriver](#) (1)
-

Step 1 — Battery



- First remove the back cover of your phone to expose the battery.

Step 2



- Turn the phone over.
- Push forward on the battery with your thumb.

Step 3



- Take the battery out by lifting it upwards.
- ☑ When reassembling, make sure that the battery contacts match up.

Step 4 — Back Panel



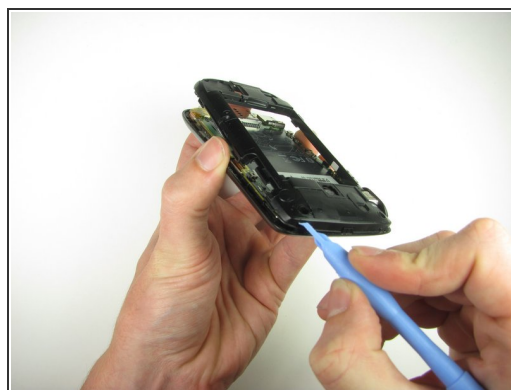
- Remove the four 4.9mm T6 Torx screws that secure the back panel to the rest of the phone.

Step 5



- Remove the two 4.3mm Phillips #00 screws that secure the back panel to the rest of the phone.

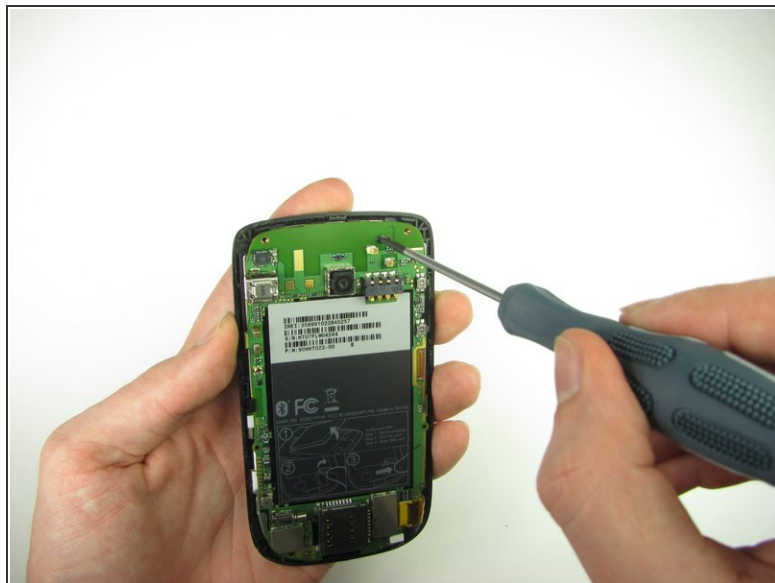
Step 6



- Insert the plastic opening tool along the seams at different points to it pry the clips off.

i This may require a bit of force. The USB port cover may fall off in this step.

Step 7 — Motherboard



- Remove the one 3.3mm Phillips #00 screw.

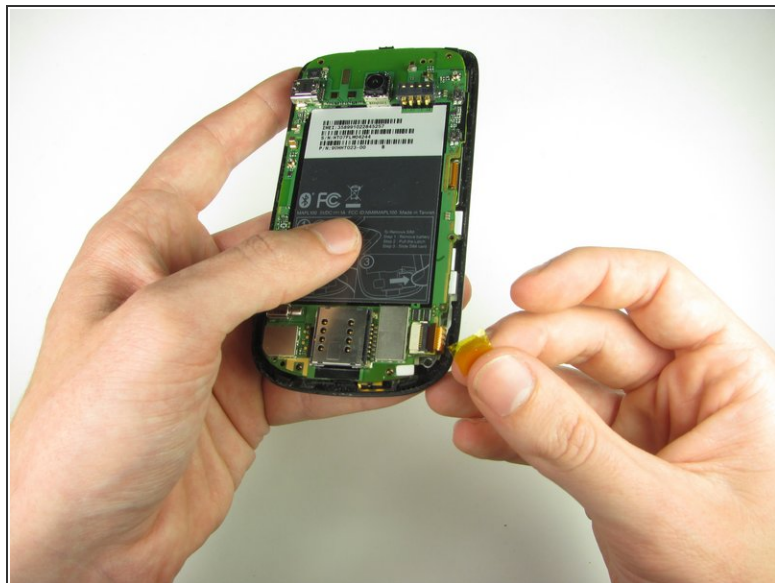
Step 8



- Use your finger or the plastic opening tool to unclip the board.

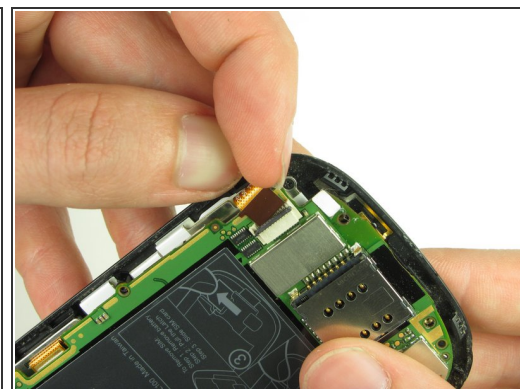
⚠ Be aware of the ribbon cable connected to the motherboard inside the phone.

Step 9



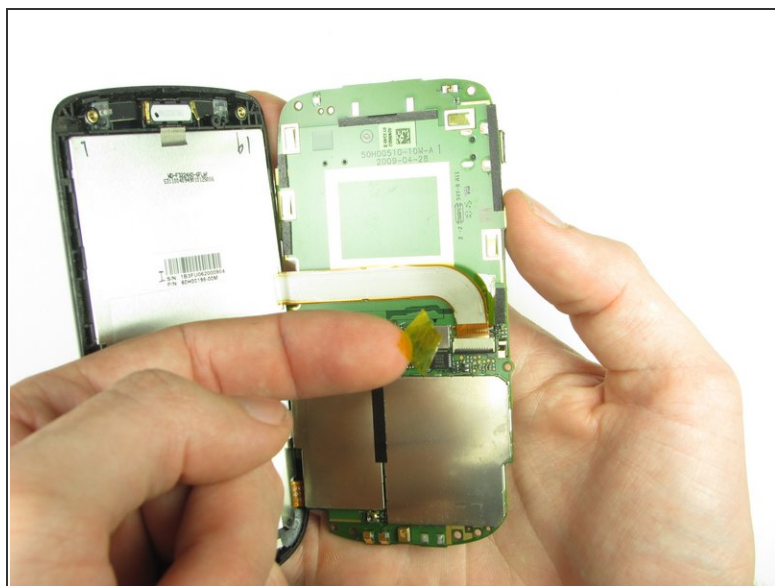
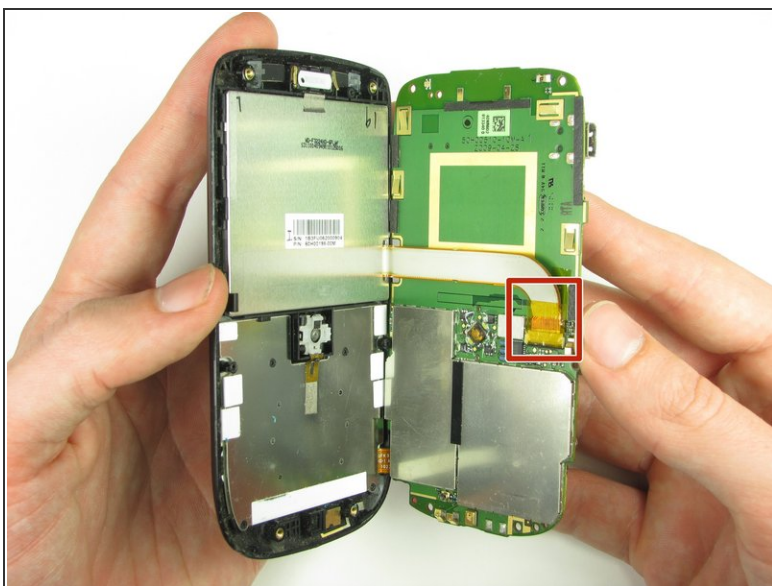
- Peel off the yellow piece of tape from the phone.

Step 10



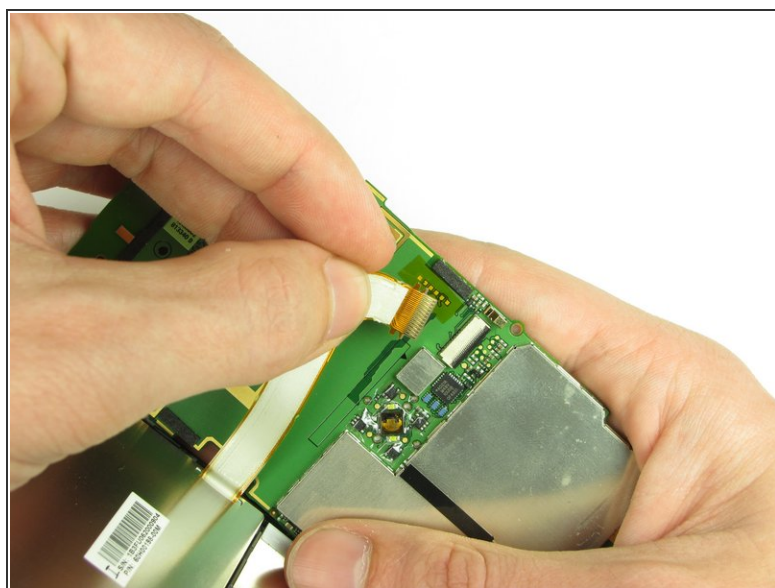
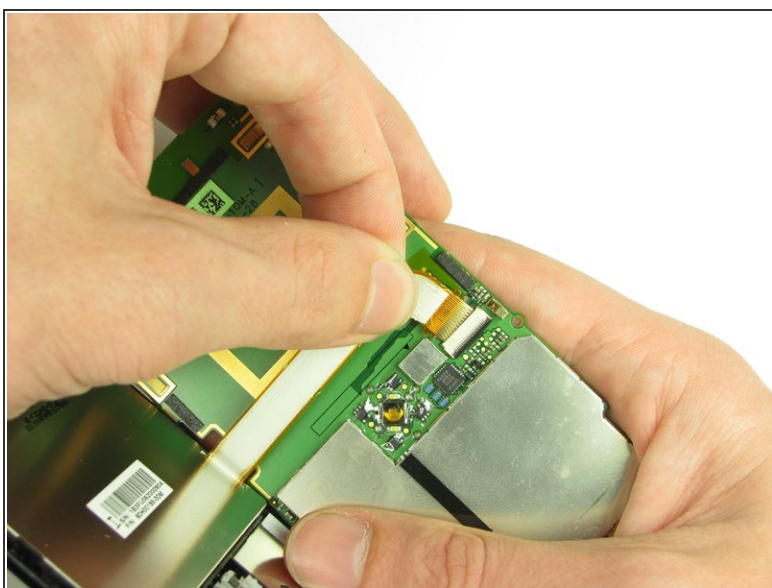
- Flip up the retaining flap with your fingernail or a plastic opening tool.
- Pull on the ribbon cable gently with your fingers.

Step 11



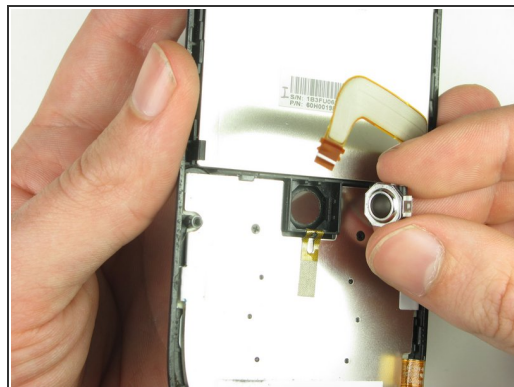
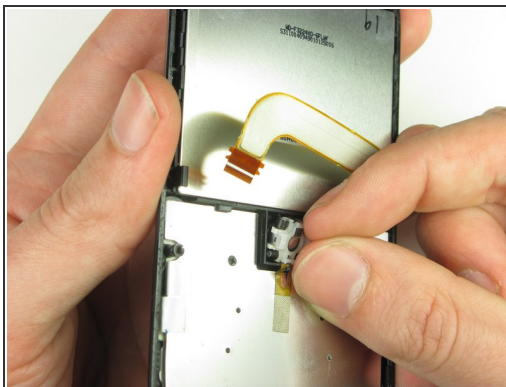
- Split apart the motherboard and front panel.
- Remove the other yellow piece of tape off of the end of the ribbon cable.

Step 12



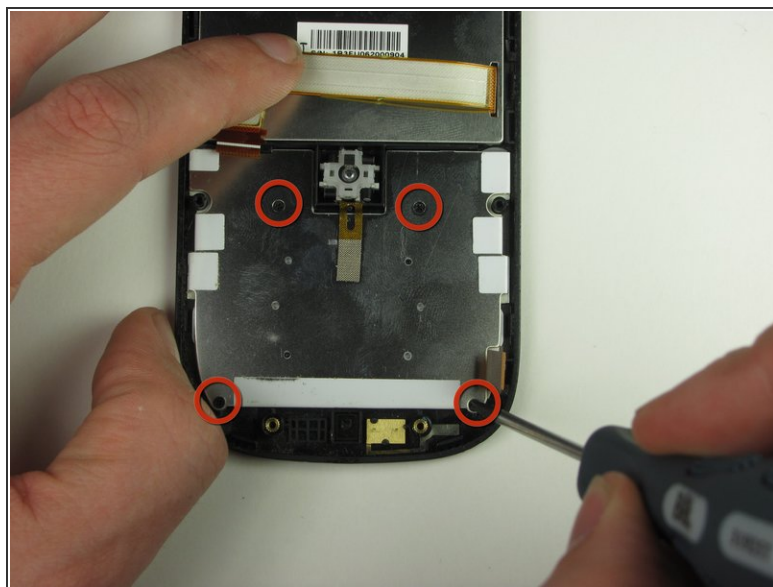
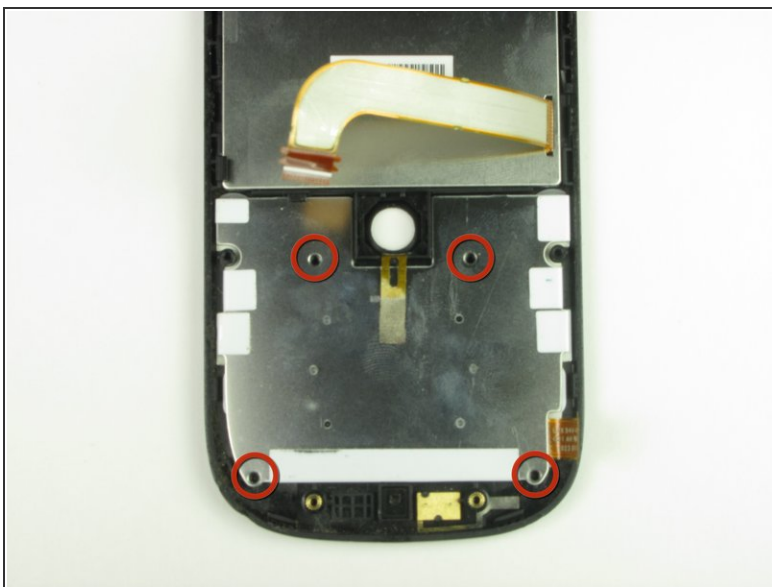
- Gently pull on the ribbon cable to separate the motherboard.

Step 13 — Trackball



- Using your fingers, gently pull the trackball out.

Step 14 — Keyboard



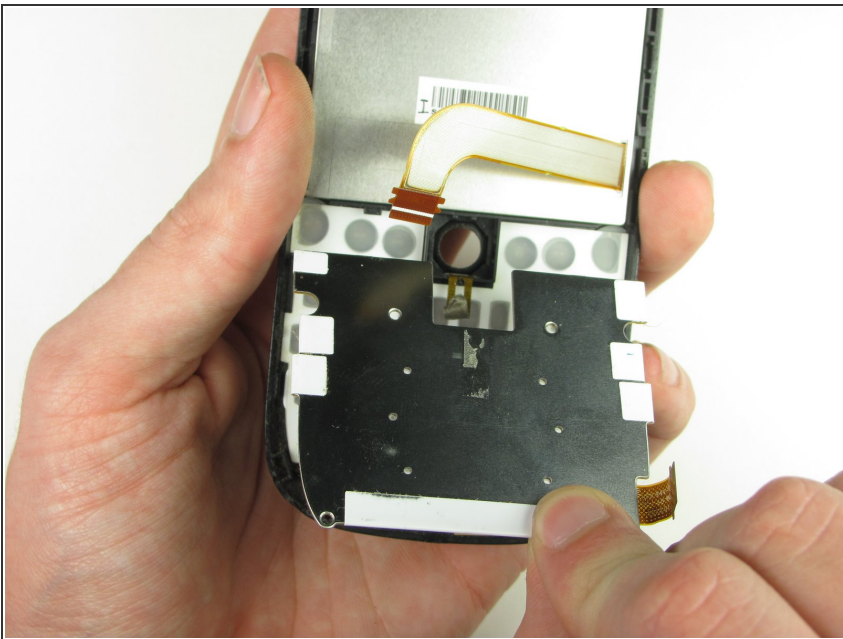
- Remove the four 1.9 mm Phillips #00 screws.

Step 15



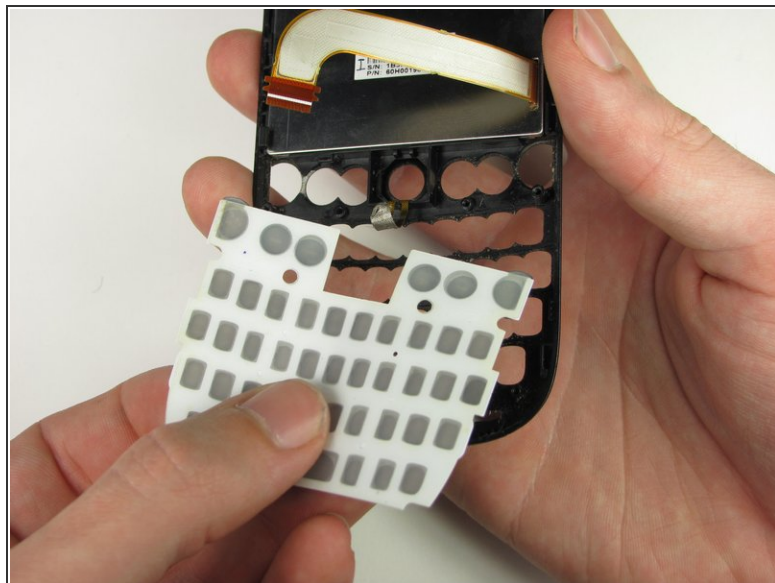
- Peel back the tape gently.

Step 16



- Remove the board gently.

Step 17



- Remove the keys carefully.

To reassemble your device, follow these instructions in reverse order.