



# HP Photosmart c3180 Scanner Bulb Replacement

If the scanner on your HP Photosmart c3180 is...

Written By: Jim



## INTRODUCTION

If the scanner on your HP Photosmart c3180 is not working, you may want to check the scanner bulb.

The scanner bulb illuminates the document being scanned in order for the printer to get a clearer image of the document.

Scanner bulbs dim over time and eventually burn out, this requires the owner to replace the bulb in order to get the scanner working again.

This guide requires steady hands to deal with small parts as well as knowing the parts of the printer.

*BEFORE REPLACING BULB UNPLUG PRINTER FROM POWER SOURCE*



### TOOLS:

[Spudger](#) (1)

[TR10 Torx Security Screwdriver](#) (1)

---

## Step 1 — Top Panel of HP Photosmart c3180 printer



- ☒ Before disassembling your printer, be sure that the printer has been unplugged to avoid any risk of injury.
- Rotate the printer 90 degrees counter clockwise so that the side panel next to control panel is facing you.
- Remove the two T10 12mm Torx screws from the left side panel.

## Step 2



- Firmly pull the the back of the side panel until it separates from the body of the printer.
- Rotate the side panel upwards while pulling it towards yourself to remove the panel.

## Step 3



- Rotate the printer 90 degrees clockwise.
- Grasp the paper tray and rotate it down.
- Insert your fingers into the slot in the printer door and pull to rotate the gate down.



## Step 4



- Rotate the printer 90 degrees clockwise.
- Remove the two T10 12 mm Torx screws.
- Grasp both sides of the side panel and pull it forward to remove the panel.

## Step 5



- Rotate the printer 90 degrees counter clockwise.
- Lift the scanner lid to expose the scanner glass.

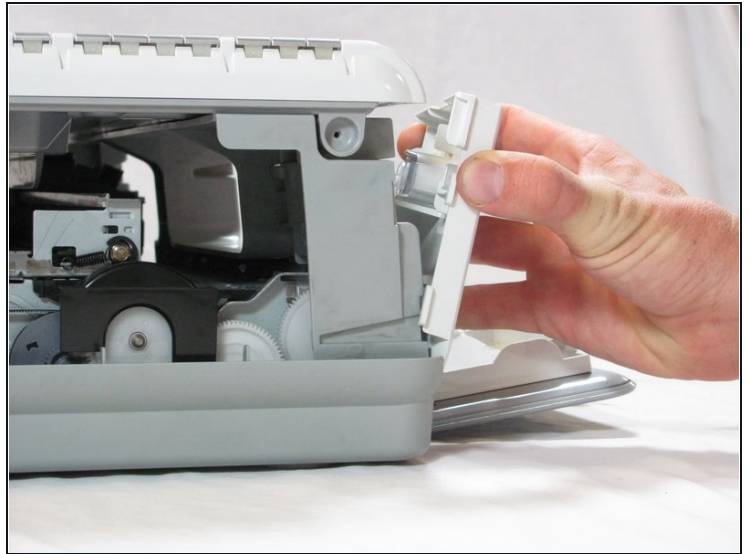
## Step 6



- Remove the two T10 12 mm Torx screws.

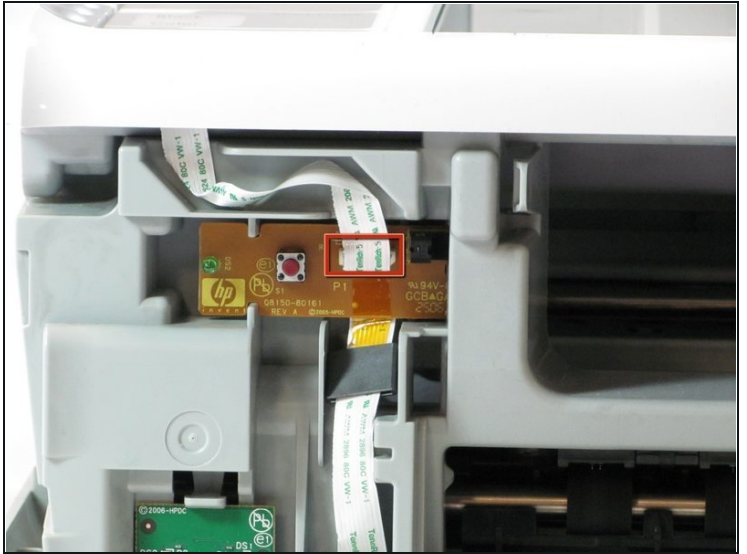
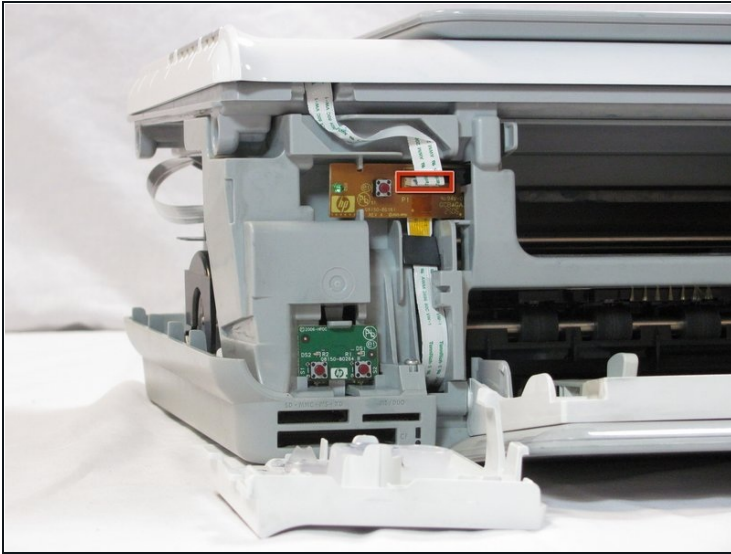
⚠ Do not attempt to lift the top panel off the printer yet because it is still connected to the printer body by a cable.

## Step 7



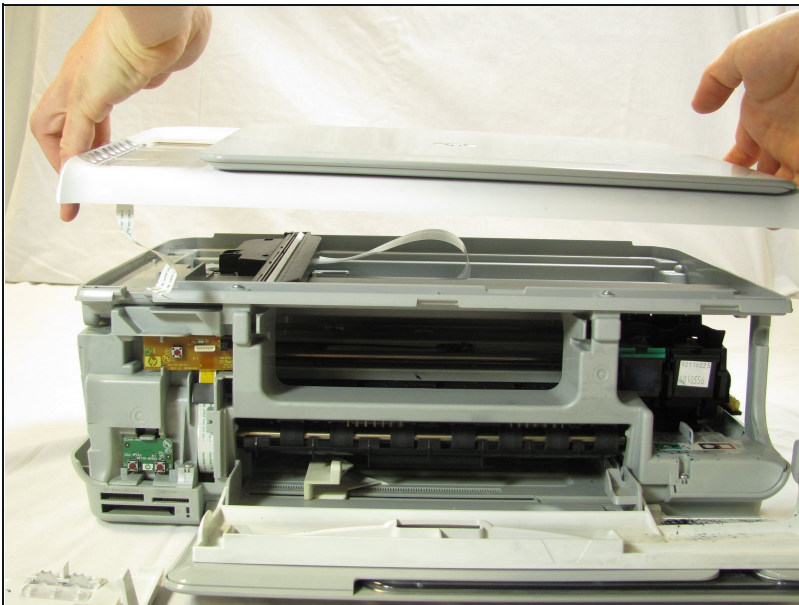
- Rotate the printer 90 degrees counter clockwise.
- Inside the printer is a small white tab. Press it inward with a spudger until a pop is heard.
- Remove the front panel by grasping its front and pulling away from the printer.

## Step 8



- Rotate the printer 90 degrees clockwise.
- Remove the cable connecting the top panel of the printer to the power button assembly.

## Step 9



- Carefully lift the top panel of the printer away from the printer body.



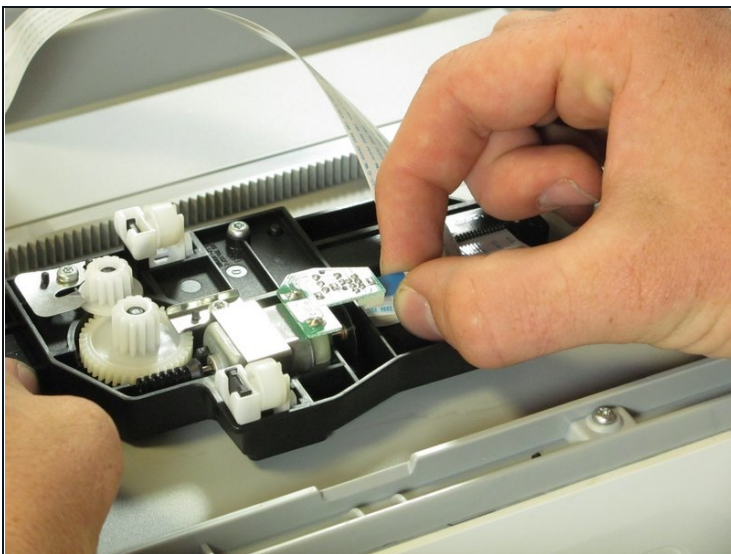
## Step 10 — Scanner Bulb



- Set aside the top panel of the printer.

⚠ Lift the scanner carriage vertically, being careful not to yank of the cables connecting it to the printer.

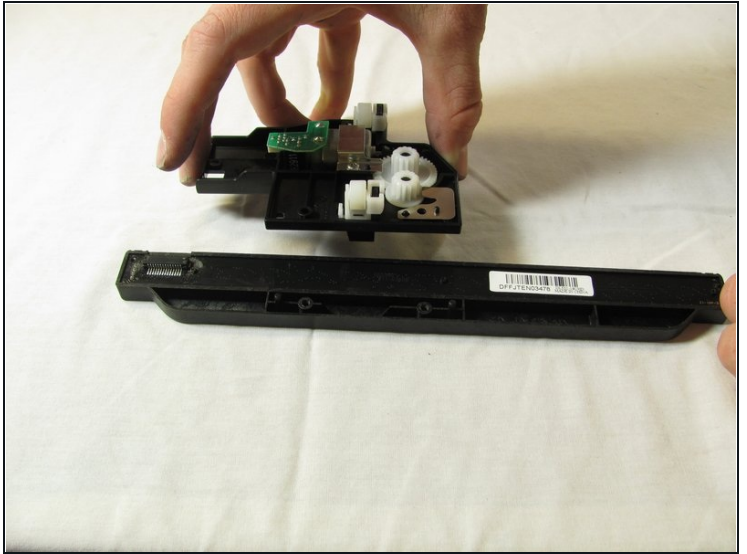
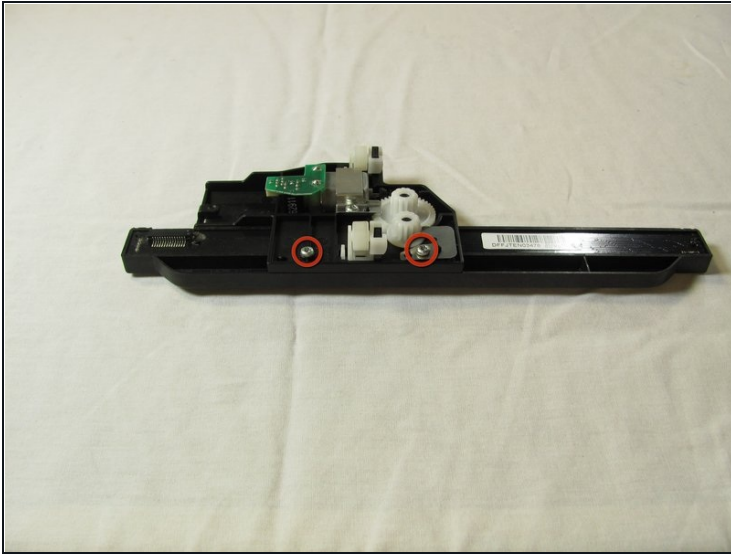
## Step 11



- Flip the scanner carriage over to expose the connectors on the bottom.
- Carefully remove the small cable from the connector.
- Carefully remove the large cable from the connector.



## Step 12



- Remove the scanner carriage from the scanner tray and flip it upside down.
  - Remove the two T10 12mm Torx screws.
  - Remove the scanner carriage from the scanner bulb.
- 

To reassemble your device, follow these instructions in reverse order.