



Toshiba Stor.E Alu 2S Disassembly

This tutorial tries to disassemble the HDD for any use later on. It is not hurt!

Written By: Niels



INTRODUCTION

In this tutorial you may learn how to disassemble the Toshiba Stor.E Alu 2S 2,5" without hurting anyone (including the HDD!). You may afterwards build in another 2,5" Device in the case or build the included HDD inside any PC. The Device can afterwards be completely rebuild just by reversing the instructions.



TOOLS:

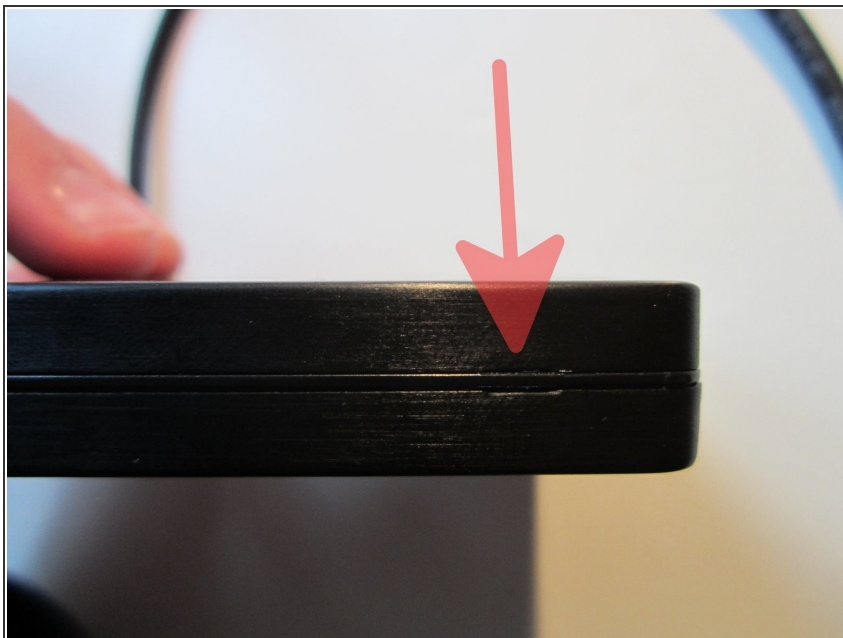
- [Spudger](#) (1)
 - [Phillips #0 Screwdriver](#) (1)
 - [iFixit Opening Tools](#) (1)
-

Step 1 — Toshiba Stor.E Alu 2S Disassembly



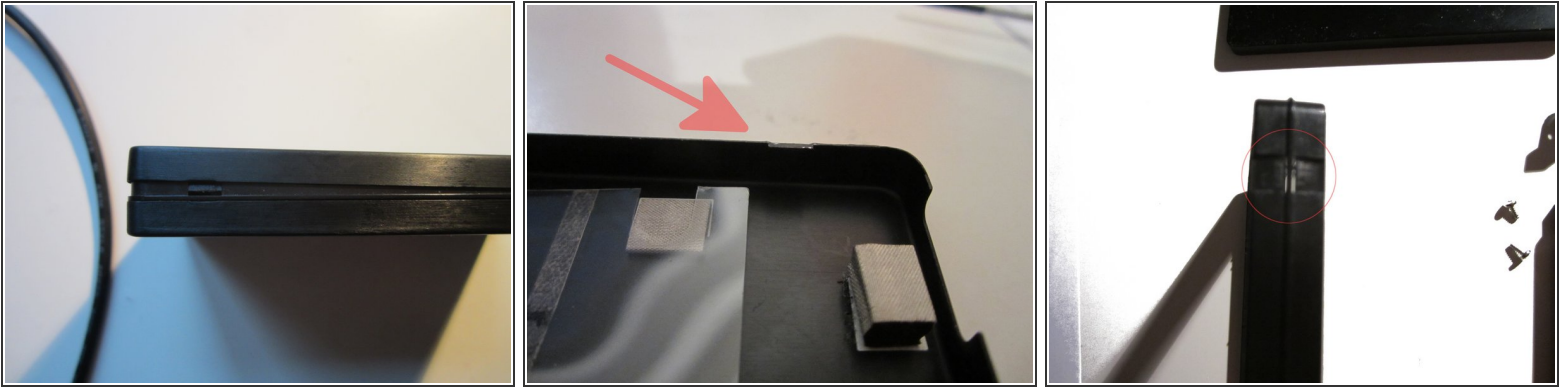
- This is the portable HDD we start with. Your version may look different as they come white, silver or black. Anyway this tutorial will work on all of them without anyone bleeding.

Step 2



- First we search for these notches. They are positioned on the side of the case and there are four of them. Do you see them?

Step 3



- We try to open the case by widening the outer frame with our sharp fingernails (alternatively you may use any sharp tool, but that might hurt this beautiful case...).
- Keep in mind that there are two separate halves of the outer case.
- I've included photos of the edges that hold the outer case tight. Maybe knowing about those will help you.

Step 4



- Making progress?

Step 5



- Once you have opened the first half of the case, repeat for the other one.
- Isn't it beautiful?

Step 6



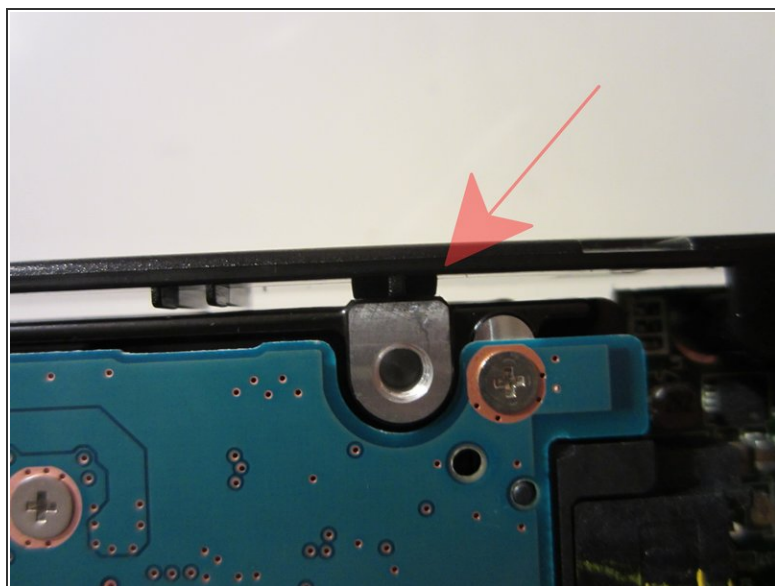
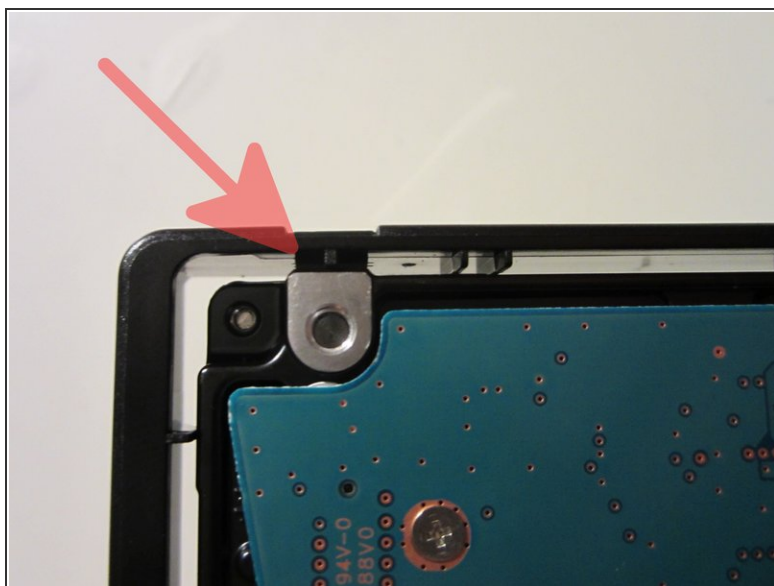
- What we see now are the inner frame, the HDD and the SATA-USB-Adapter. The last one will leave shortly.
- If you don't see the same side of your disk as there is on the photo, turn it on its back.
- You now need your crossed screwdriver to screw the screw I've marked.

Step 7



- Well I hope you screwed this up until now.

Step 8



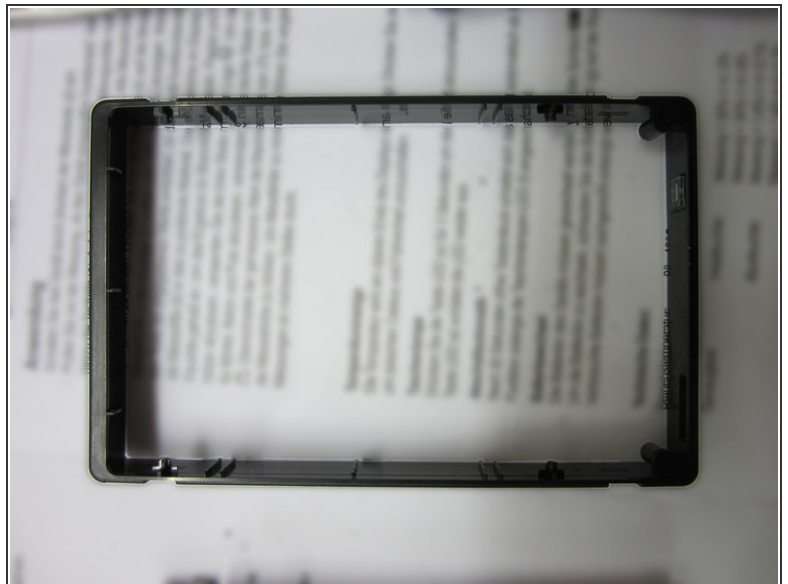
- Now we continue to remove the plastic inner frame
- See those buggers I've marked with arrows?
- Are you sure?
- There are four of them.
- Really found all?

Step 9



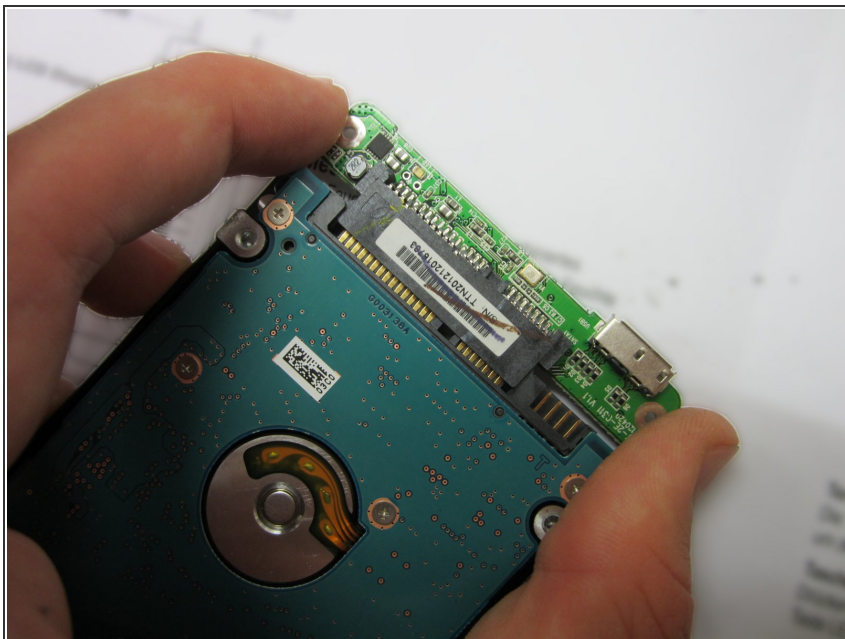
- Use the flathead screwdriver or any sufficient tool as a lever and bend the frame outwards.
- Easy huh?

Step 10



- Repeat this for all buggers, you end up with the HDD + SATA-USB-Adapter and the plastic frame

Step 11



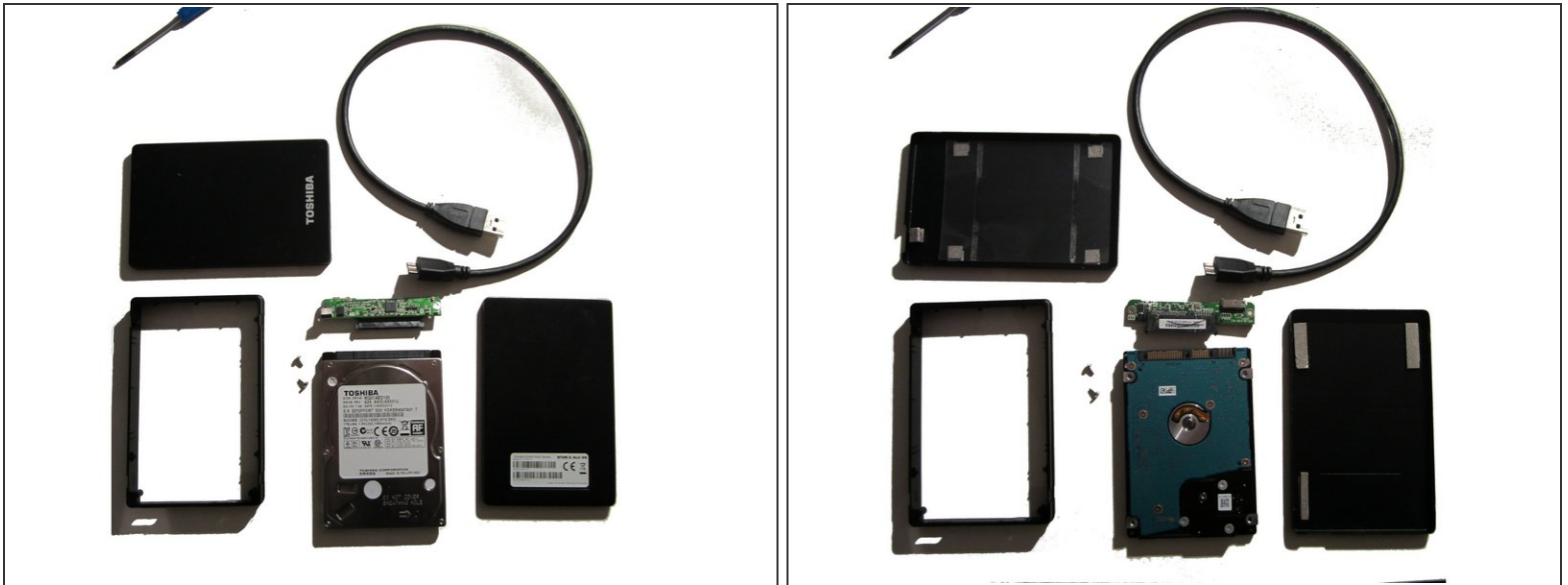
- Now remove the USB-SATA-Adapter. You can do this by hand. I believe in you.

Step 12



- I am so proud of you.

Step 13



- Yeah you did it! I hope you enjoyed this teardown :)
- If you have any questions regarding the photos (there are more, I own them), my text and instructions or my mental health feel free to message me!