



# Blackberry Curve 8320 Front Panel Replacement

The purpose of this guide is to provide instruc...

Written By: Christopher Aiello



# INTRODUCTION

The purpose of this guide is to provide instructions for the Blackberry Curve 8320 front panel replacement.

Specifically, this guide will show you how to:

1. Remove the battery
2. Remove the front cover
3. Replace the front panel

To repair this device there are no specific skills required however, when removing parts and reassembling the device it is important to handle the device with care. This device is an older model phone and therefore it is essential to follow the instructions carefully in order to ensure the longevity of the device.

---

## TOOLS:

[iFixit Opening Tool](#) (1)

[T5 Torx Screwdriver](#) (1)

---

## Step 1 — Battery



- Hold the phone with the back facing you.
- Press the silver tab down and remove the cover.

## Step 2



- Pull up on the top edge of the battery to remove it.

## Step 3 — Front Panel



- Use a plastic opening tool to gently pry the bottom cover loose.

**⚠ Do not use excessive force at risk of damaging the antenna, which is under this casing.**

- Pull the cover from the front of the phone after the back is loose.



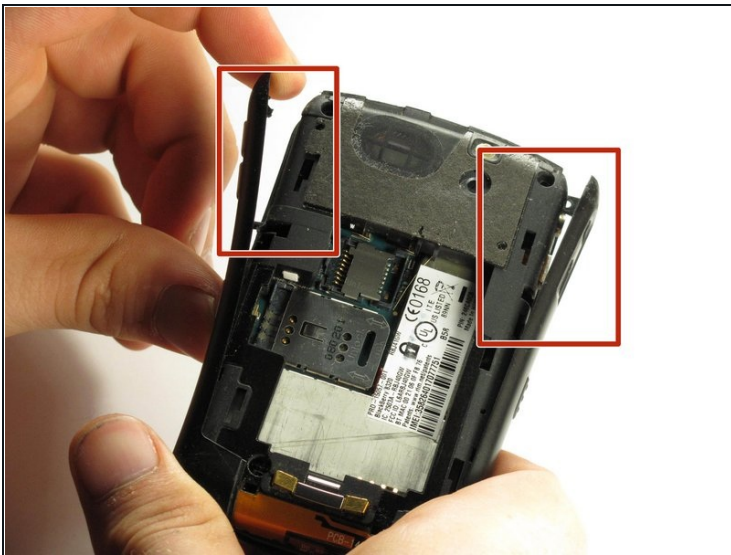
## Step 4



- Remove the two top screws with a T5 Torx screwdriver.

ⓘ The screws are 8mm long.

## Step 5

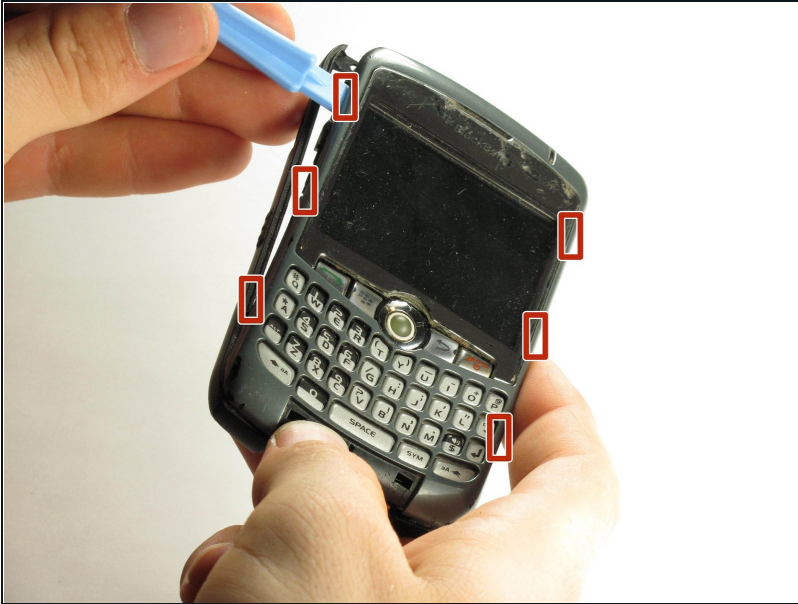


- Gently pry off the side casings from the top.

⚠ The side casings cannot be fully removed yet because they are screwed on at the bottom.

- You will not need to remove the sides on the bottom.

## Step 6



- Use a plastic opening tool to detach the securing clips holding the the front panel in place.

ⓘ There are six securing clips total.

## Step 7



- Carefully remove the front panel.

ⓘ You may need to apply some force in removing because the front panel is attached to the rest of the device with adhesive.

---

To reassemble your device, follow these instructions in reverse order.