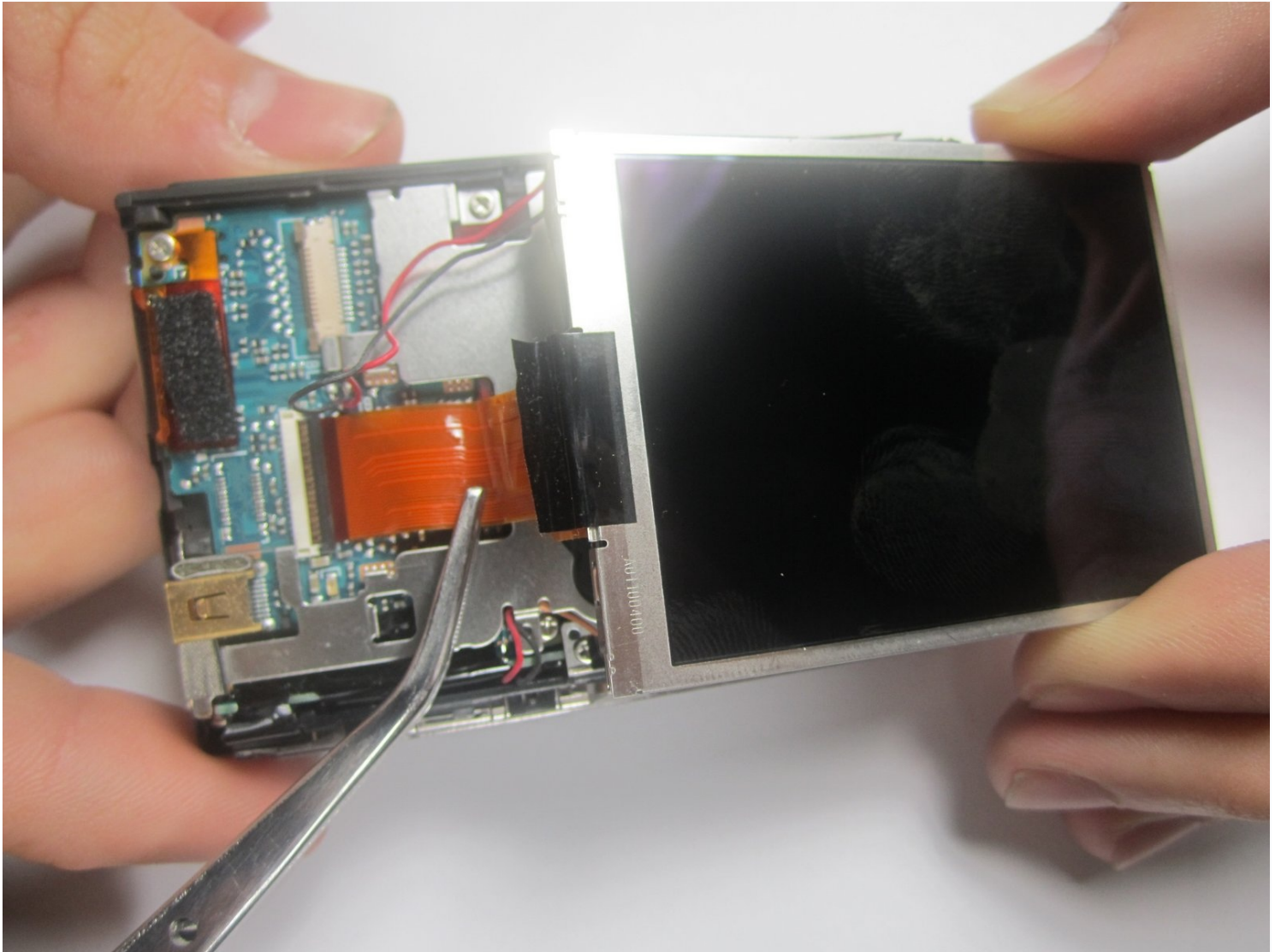




Nikon CoolPix S600 LCD Replacement

Written By: andreas anggasastra



TOOLS:

Lead-Free Solder (1)

Soldering Iron (1)

Tweezers (1)

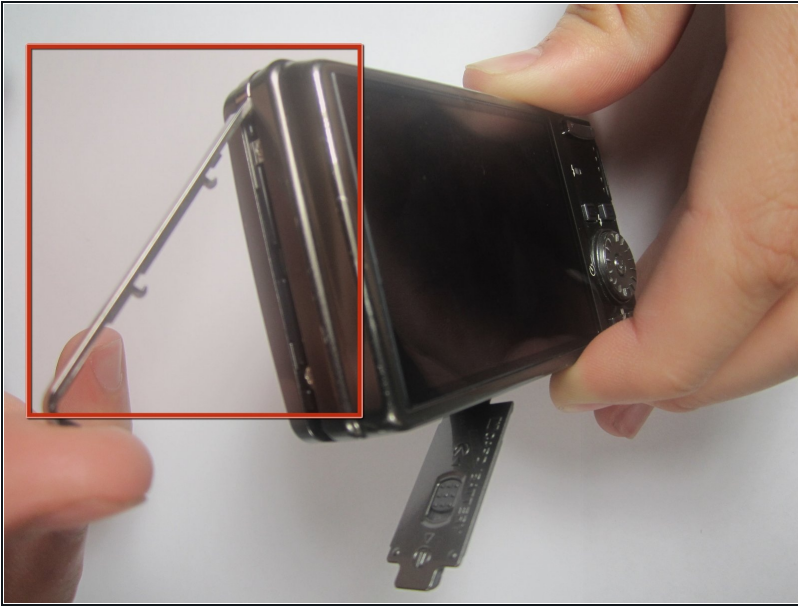
Phillips #00 Screwdriver (1)

Step 1 — Front and Rear Casing



- With the lens facing forward, remove the one 4.2 mm screw on the bottom right hand corner of the camera.

Step 2



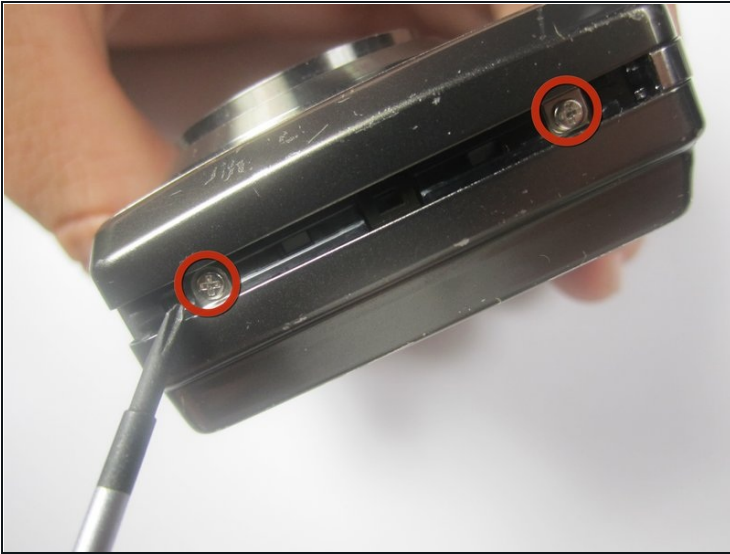
- Remove the chrome side cover from the body of the camera.

Step 3



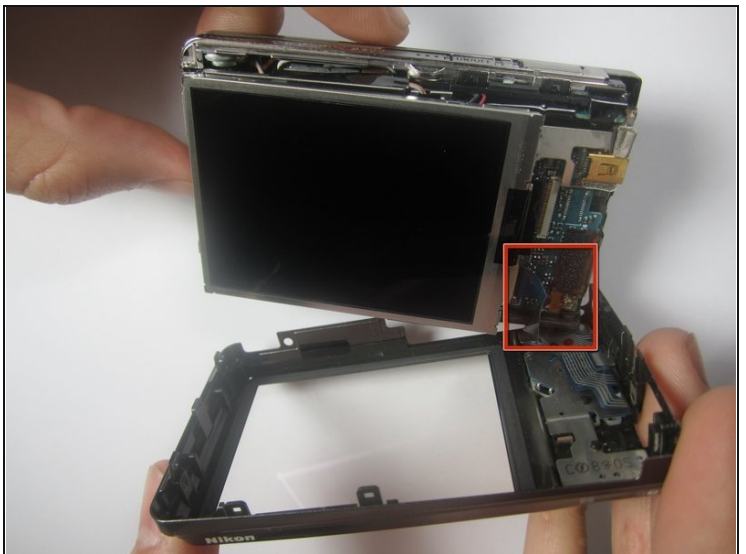
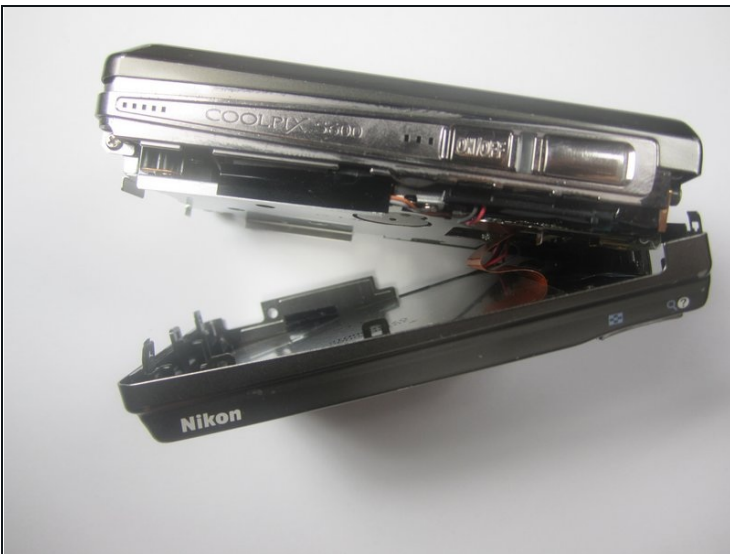
- Remove the four 3.2 mm screws on the bottom of the camera.

Step 4



- Remove the two 3.2 mm screws from the right side of the camera (with lens is facing forward)
- Remove the one 3.2 mm screw from the left side of the camera (with lens facing forward)

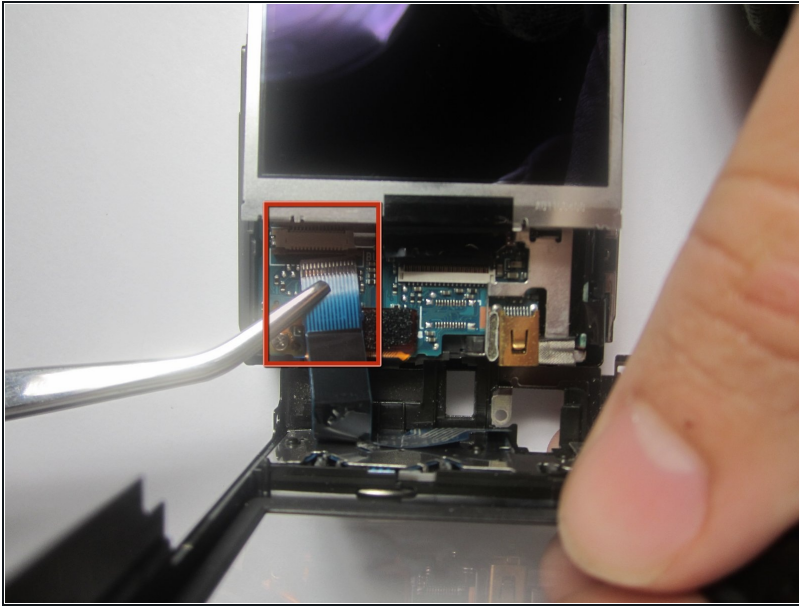
Step 5



- Gently separate the back cover from the body of the camera.

⚠ The back casing will still be connected to the circuit board by a ribbon

Step 6



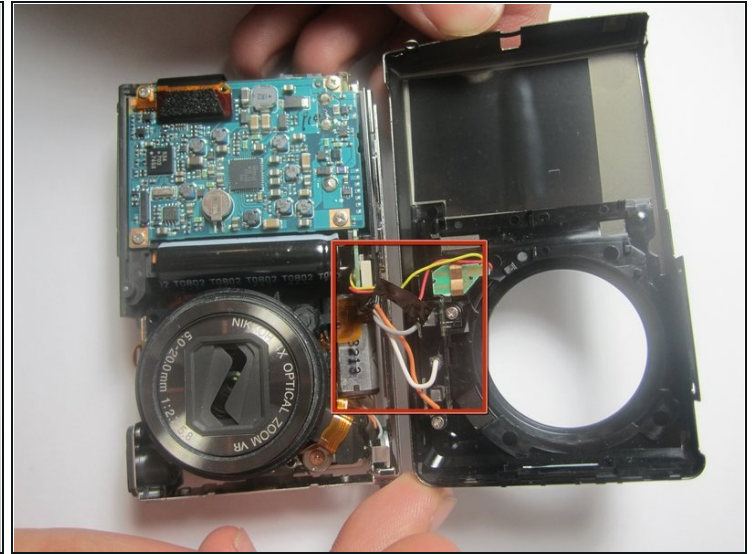
- Use the [tweezers](#) to disconnect the ribbon from the circuit board.

Step 7



- Remove the one 2.6 mm screw from the left side of the camera (with the lens facing forward)

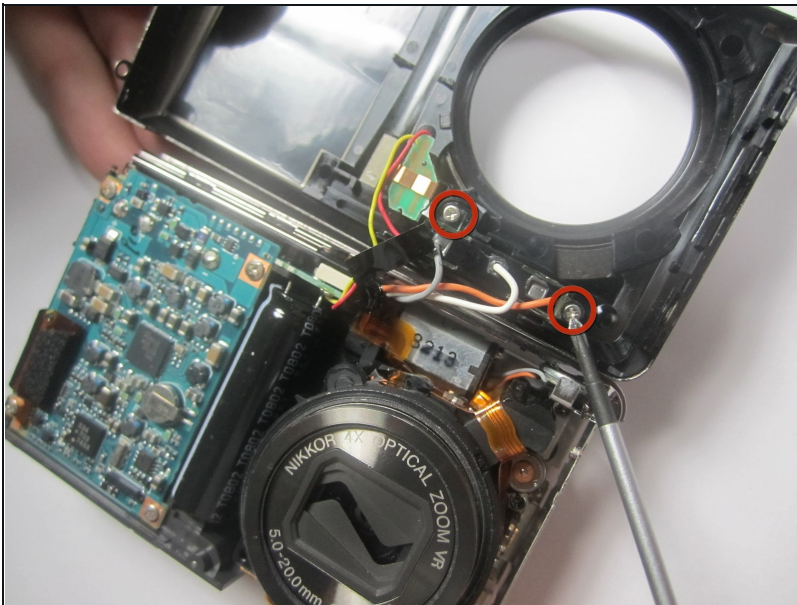
Step 8



- Gently separate the front cover from the body of the camera.

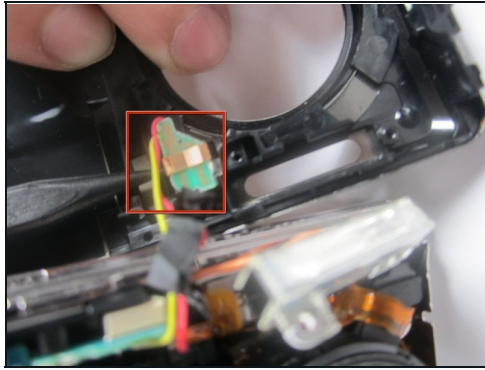
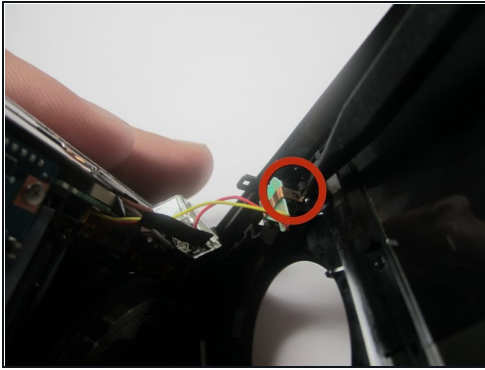
⚠ The front casing will still be connected to the circuit board by a few wires

Step 9



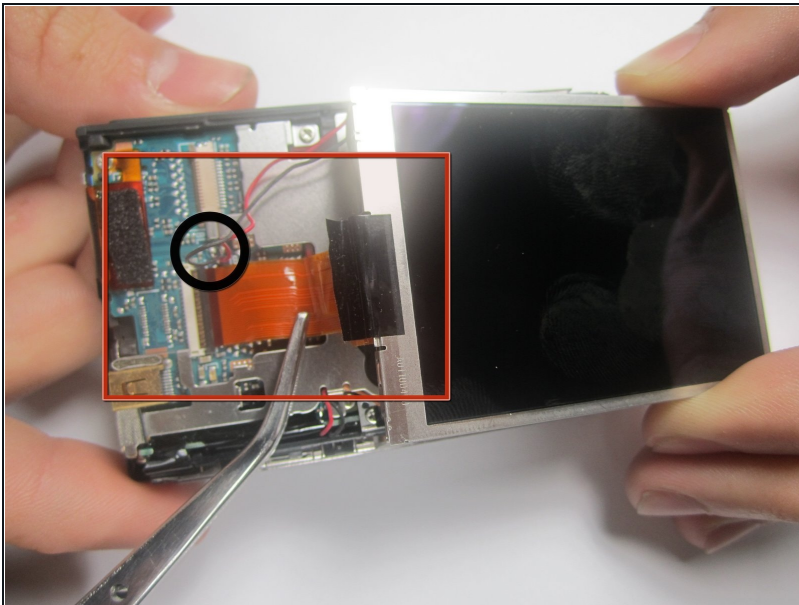
- Remove the two 3.2 mm screws that hold the flash to the front cover.

Step 10



- Use the Spudger to remove the copper colored light bulb clip.
- Remove the front cover entirely from the camera body.

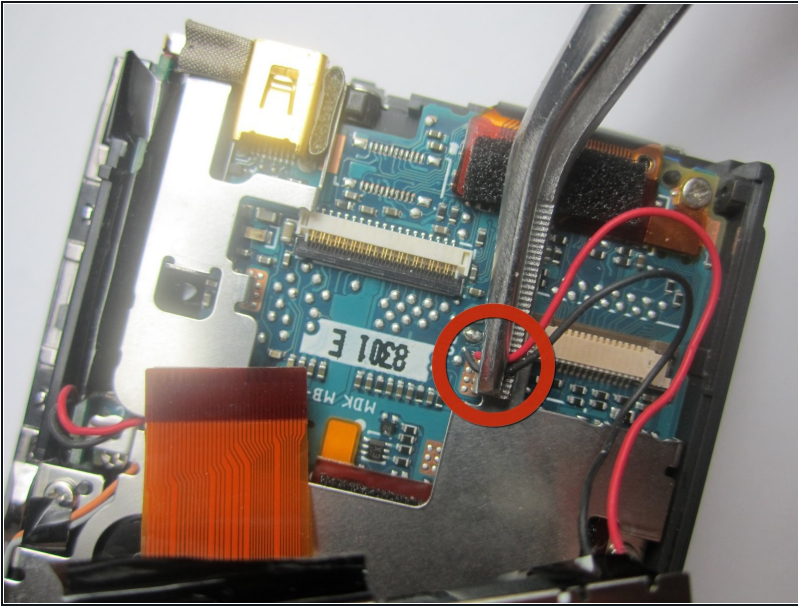
Step 11 — LCD



- Gently remove LCD ribbon from the motherboard

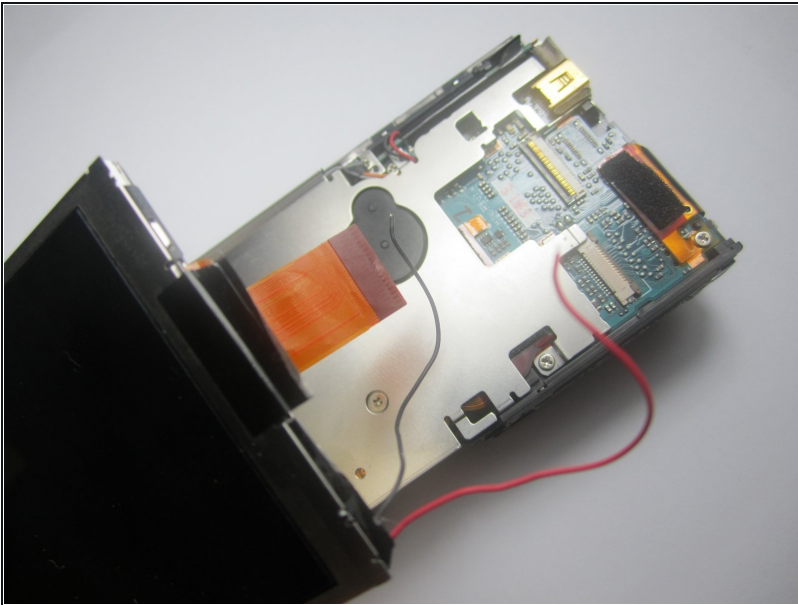
⚠ The screen will still be connected to the motherboard by two very small wires (black & red)

Step 12



- Desolder both wires from the mother board.
- ① Refer to iFixit's [solder/desoldering guide](#) for the correct procedure to desolder the connection.

Step 13



- Separate the LCD screen from the rest of the mother board

To reassemble your device, follow these instructions in reverse order.