



Microtek ScanMaker 5900 New Locking Mechanism Replacement

This guide shows the owner of the device how to...

Written By: Taylor Nesheim



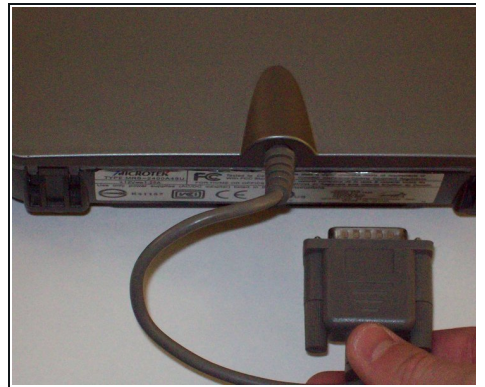
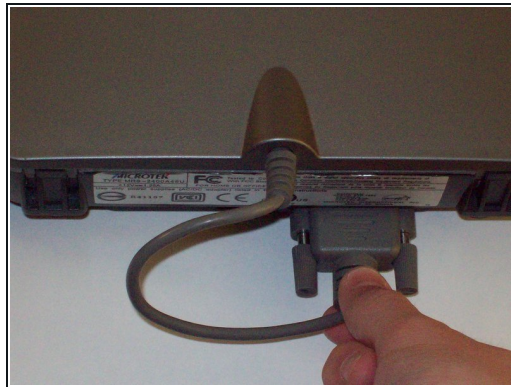
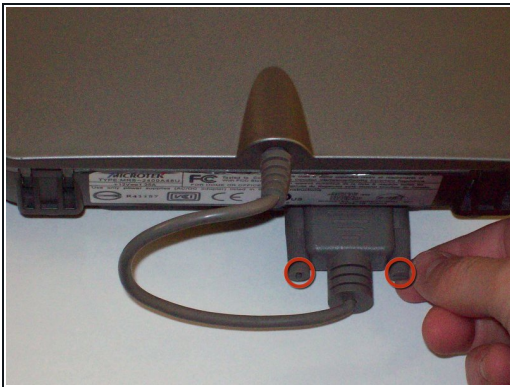
INTRODUCTION

This guide shows the owner of the device how to take and replace the locking mechanism for the scanner.

TOOLS:

[iFixit Opening Tool](#) (1)

Step 1 — Remove serial port connection



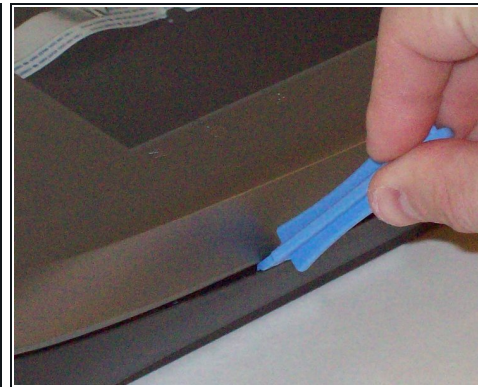
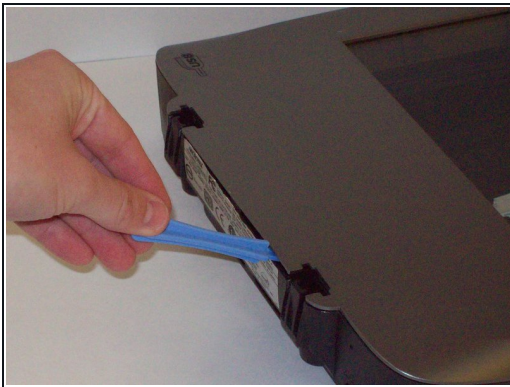
- Loosen the screws on the serial port by turning them counter clockwise by hand.
- After loosening the screws, pull the serial port out.

Step 2 — Remove Lid



- Lift lid to its vertical position.
- Pull lid straight up to remove it from the scanner.

Step 3 — Detach plastic latches



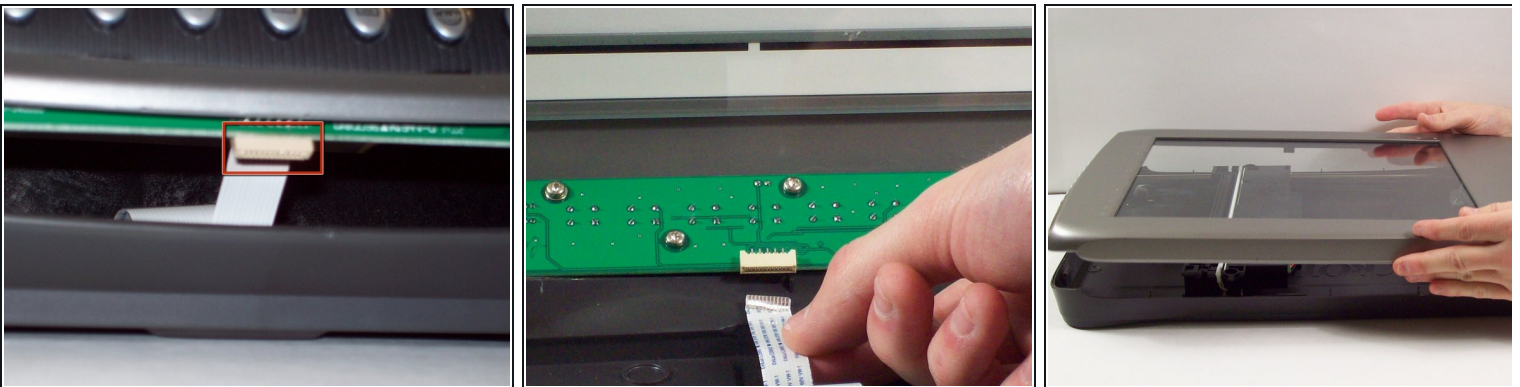
- Push the plastic opening tools into the crack between the top and the bottom of the chassis.

Step 4 — Continue latch detachment



- After placing one plastic opening tool into the slit, slide other plastic opening tools along the slit to detach the top from the bottom of the chassis.
- Go all the way along the chassis until you can lift the upper lid.

Step 5 — Fully remove the upper lid



⚠ Do not fully remove the lid until you remove the ribbon cable attached to the front of the upper lid.

- Do this by grabbing the upper lid from the sides and rotating it ninety degrees so it is perpendicular to the bottom lid.
- Grab the ribbon cable and gently pull it out of its slot with your fingers.
- The upper lid can now safely be removed from the bottom lid.

Step 6 — Remove locking mechanism



- Locate the locking mechanism in the front left hand corner of the device.
- Gently push on it until it becomes loose.
- Rotate and jiggle it until it comes out the bottom of the scanner.
- Find a replacement locking mechanism and insert it into the scanner.

To reassemble your device, follow these instructions in reverse order.