



Toshiba Encore WT8-A Battery Replacement

Written By: Zachary Armstrong



TOOLS:

Metal Spudger (1)

iFixit Opening Tool (1)


Tweezers (1)

Phillips #0 Screwdriver (1)

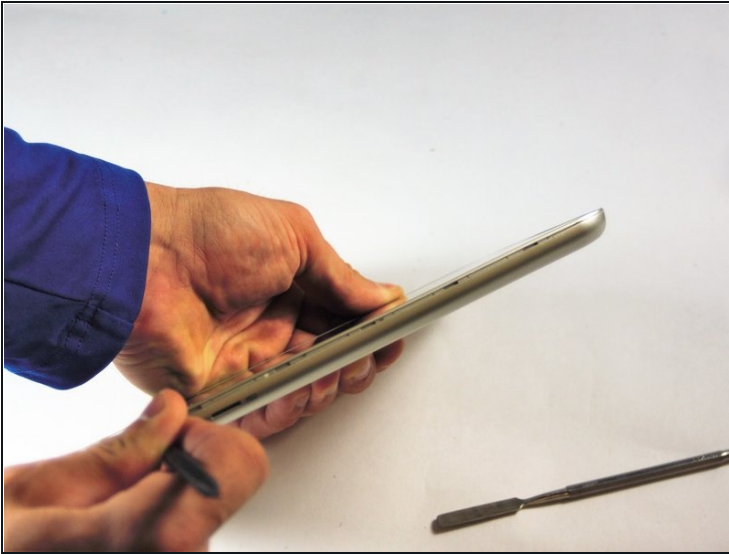
Step 1 — Battery



- Use the metal spudger to create a gap between the back cover and the device.

 Be gentle when using the metal spudger so that the casing is not damaged.

Step 2



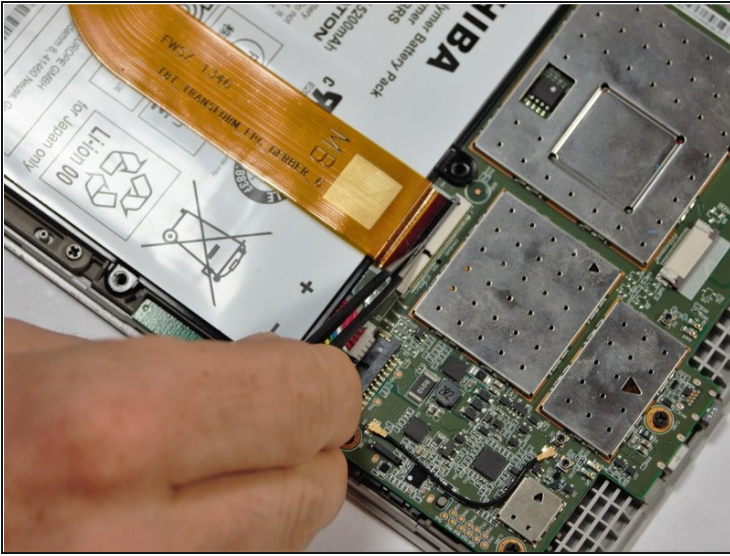
- Use the nylon spudger to completely separate the back of the device.
- Take the nylon spudger around the outside of the device cover until it comes free.

Step 3



- Use the Phillips head PH0 to remove the 7 battery screws.
- The 5 side screws measure 3.5mm.
- The 2 top and bottom screws measure 4.5 mm.

Step 4



- To disconnect the cable, use the fine [tweezers](#) to flip up the small retaining flap. Then, you can safely pull the ribbon cable out.
- ⚠ Be sure you are prying up on the hinged retaining flap, not the connector itself.
- ① The zero insertion force (ZIF) connector is used to secure delicate ribbon cables, such as this trackpad cable.

Step 5



- Remove the colored power cable from its connector.
- To disconnect it safely, use the pointed tip of a spudger to carefully push on each side of the connector.
- Alternating from one side to the other, gently “walk” the connector out of its socket.

⚠ Be sure to be very gentle when prying colored wires from motherboard to ensure that there is no damage.

Step 6



- Battery will lift out of the device.

To reassemble your device, follow these instructions in reverse order.