



Makita XPH01 Drill Brush Replacement

The drill contains two drill brushes. This...

Written By: Eric Herwatt



INTRODUCTION

The drill contains two drill brushes. This guide will show you the necessary steps to locate and replace both drill brushes. It shows how to remove the battery and back panel to locate the drill brushes.

TOOLS:

[iFixit Opening Tool](#) (1)

[Tweezers](#) (1)

[Phillips #2 Screwdriver](#) (1)

Step 1 — Battery



- Hold the drill upright.
- Place your finger on the white battery-release button.

Step 2



- Press and hold the white release button located on the front of the battery.

Step 3



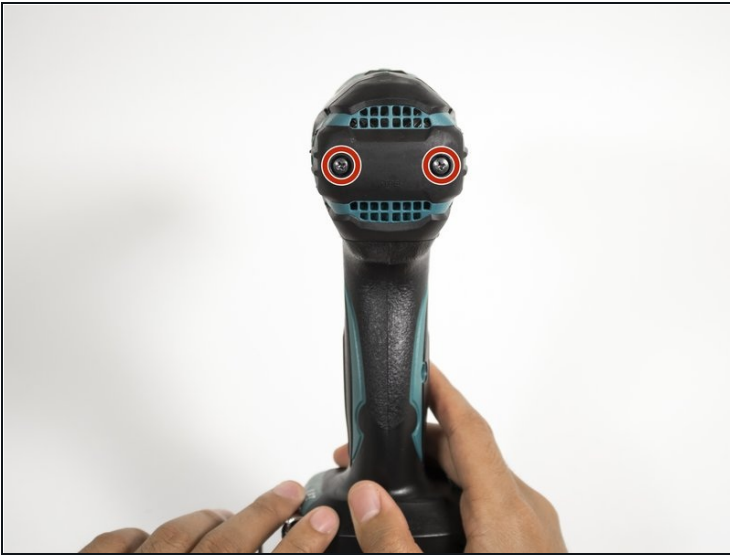
- Slide the battery forward while pressing down on the white battery-release button.

Step 4 — Drill Brush



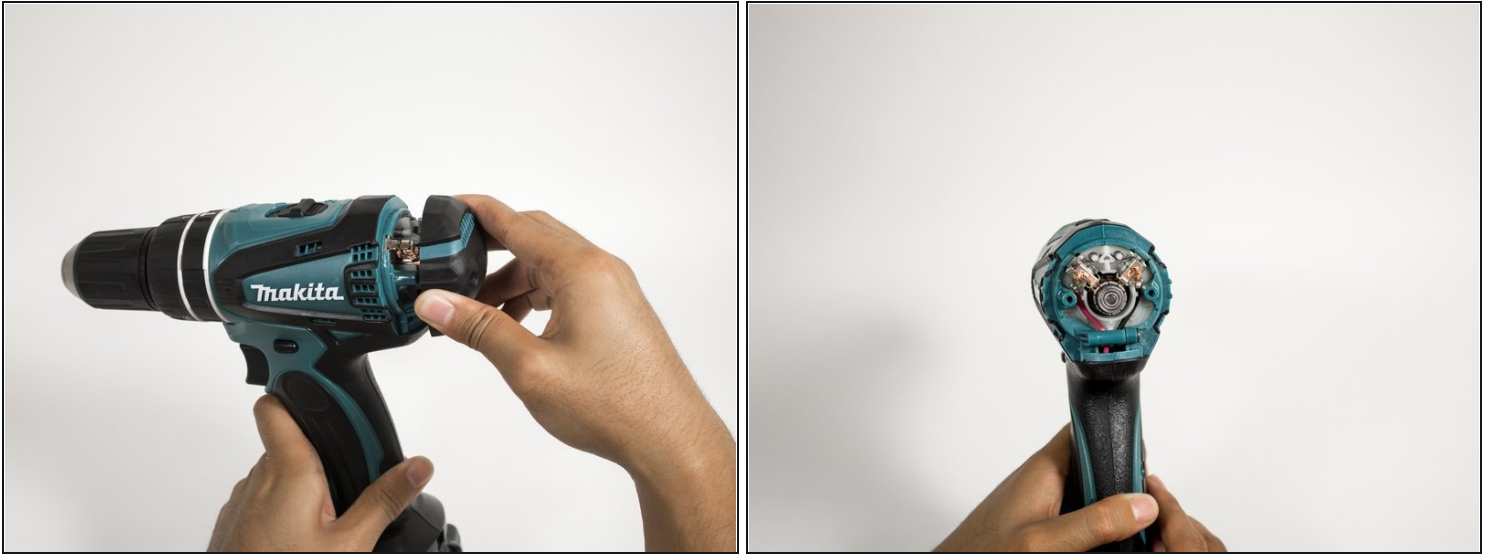
- Hold the drill upright with the back panel facing you.

Step 5



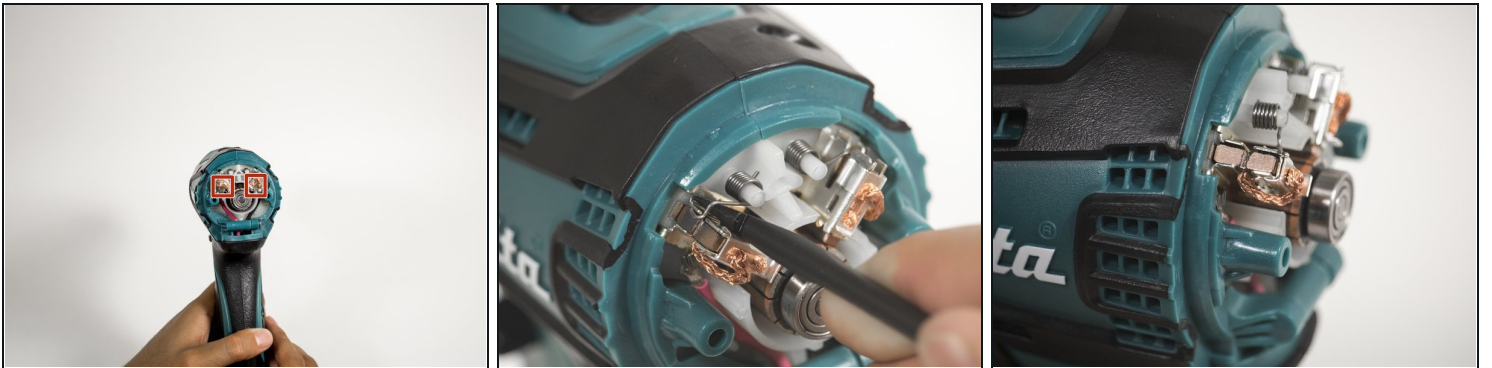
- Unscrew two 18mm screws from the back panel with the Phillips PH2 screwdriver.

Step 6



- Apply slight pressure to the sides of the backplate and pull away from the drill.

Step 7



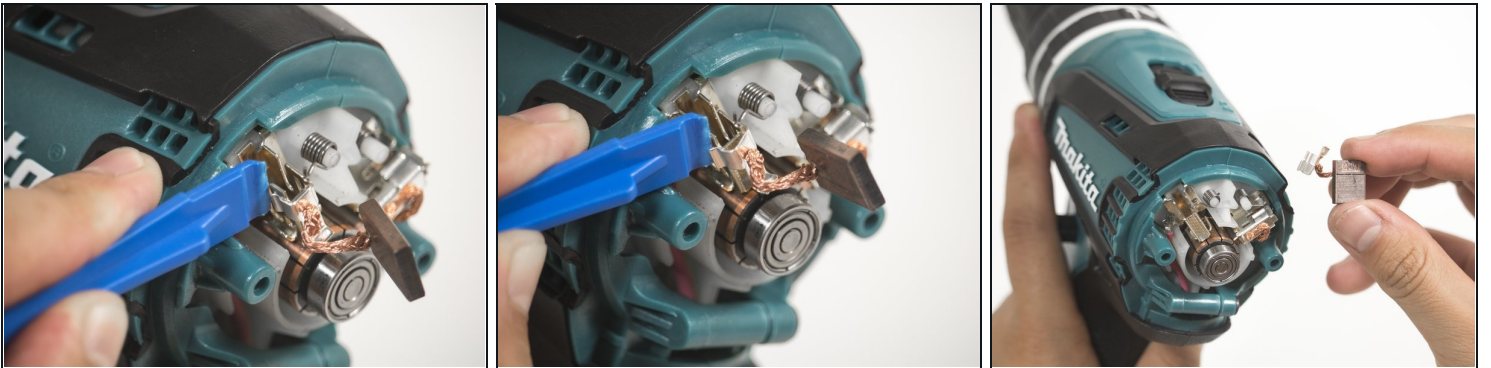
- Hold the drill so the back end is facing toward you.
- Use the spudger to lift the spring clip out of the back notch.
- Pull the spring clip forward and rest it in the front notch.

Step 8



- Use the [tweezers](#) to pull the drill brush away from the sleeve.

Step 9



- Use the plastic opening tool to release the clip connected to the drill brush.
- Separate the drill brush away from the clip.

To reassemble your device, follow these instructions in reverse order.