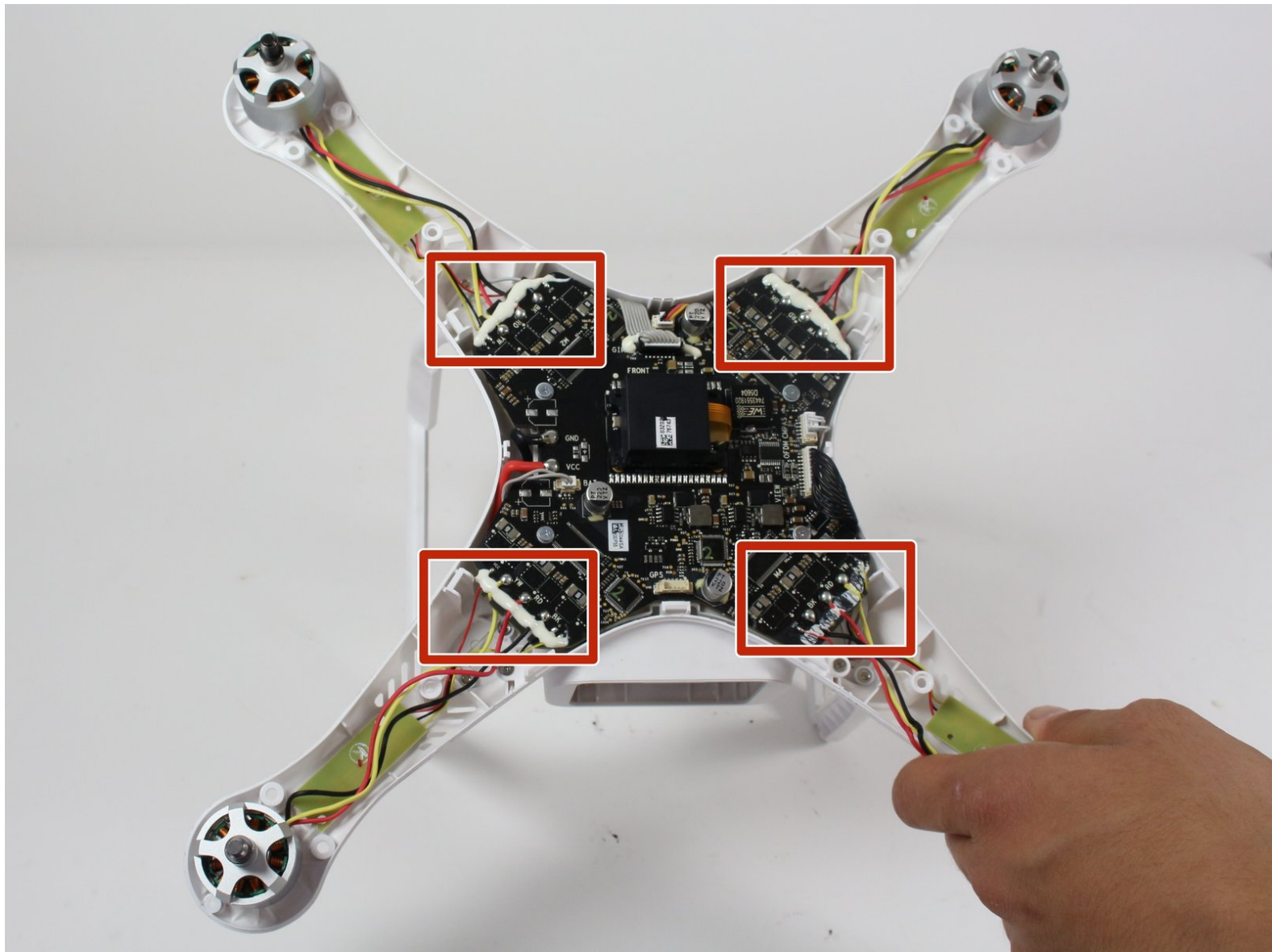




DJI Phantom 3 Advanced LED Replacement

This guide will demonstrate how to remove an LED from the DJI Phantom 3 Advanced.

Written By: Tate Morell



INTRODUCTION

In this guide you will remove the glue on the wires, desolder the wires connecting the LED to the control board and remove the LED from the drone.



TOOLS:

- [T8 Torx Screwdriver](#) (1)
 - [T6 Torx Screwdriver](#) (1)
 - [Heavy-Duty Spudger](#) (1)
 - [Soldering Workstation](#) (1)
 - [iFixit Opening Tools](#) (1)
-

Step 1 — Battery



- With the battery facing you, locate the two tabs on the top and bottom of the battery as shown.

⚠ Remember to disarm and power down your quadcopter before beginning any disassembly.

Step 2



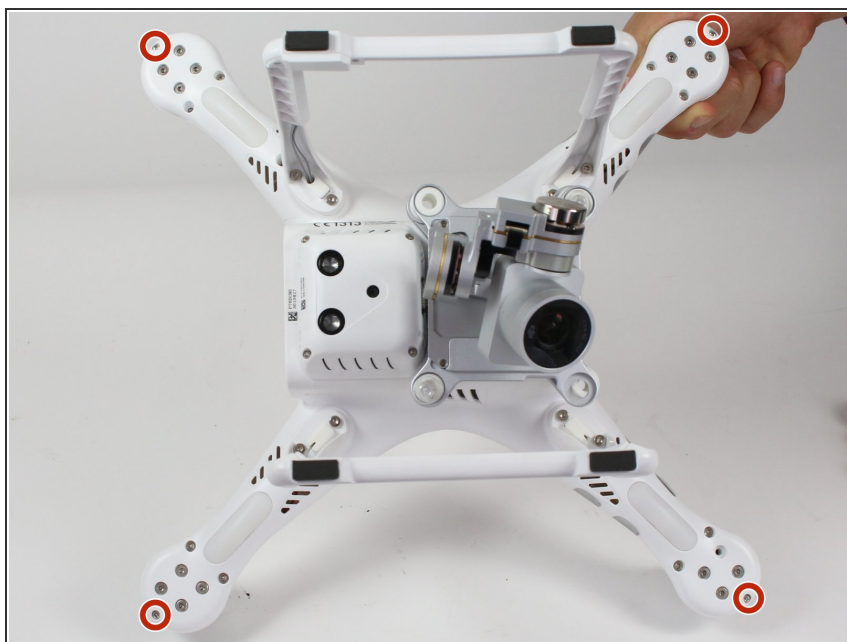
- Press the two tabs with your finger and thumb, and gently slide the battery towards you, out of the quadcopter frame.
- With your other hand, be sure to hold the quadcopter steady to ensure that it stays still.

Step 3 — Cover



- Turn the Phantom 3 Advanced upside down.

Step 4



- Remove the four 7mm long 2mm screws with a T-6 screwdriver.
- ⓘ There is one screw per arm, located at the tip of the arm.

Step 5



- Remove the eight 5mm long 2.5mm screws using the T-8 screwdriver.
- ⓘ There are two 5mm screws on each arm.

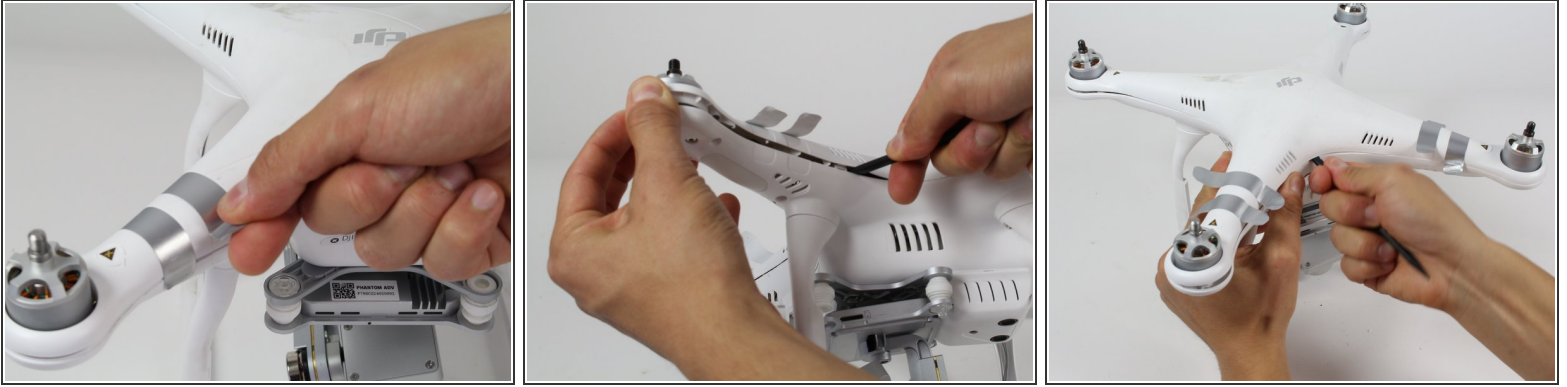
Step 6





- Remove the four 10mm long deep 3mm screws using the T-8 screwdriver.

i There is one screw on each arm located near the landing gear.

Step 7



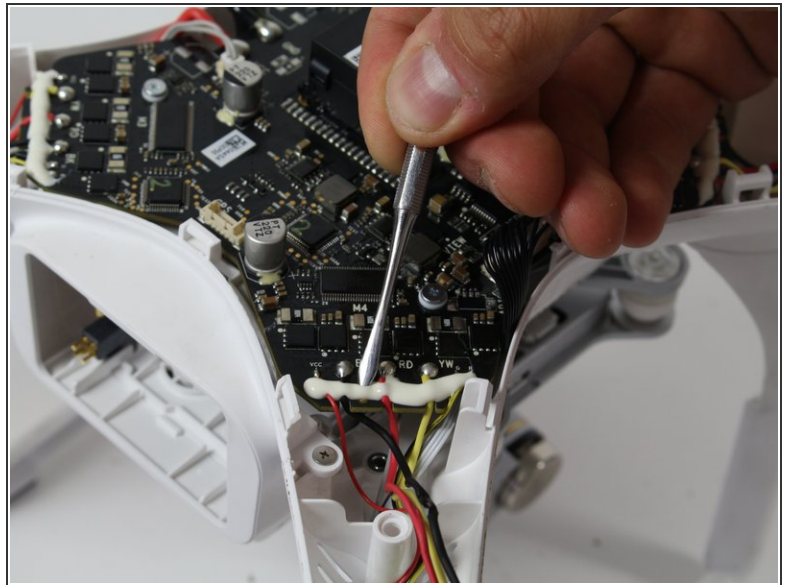
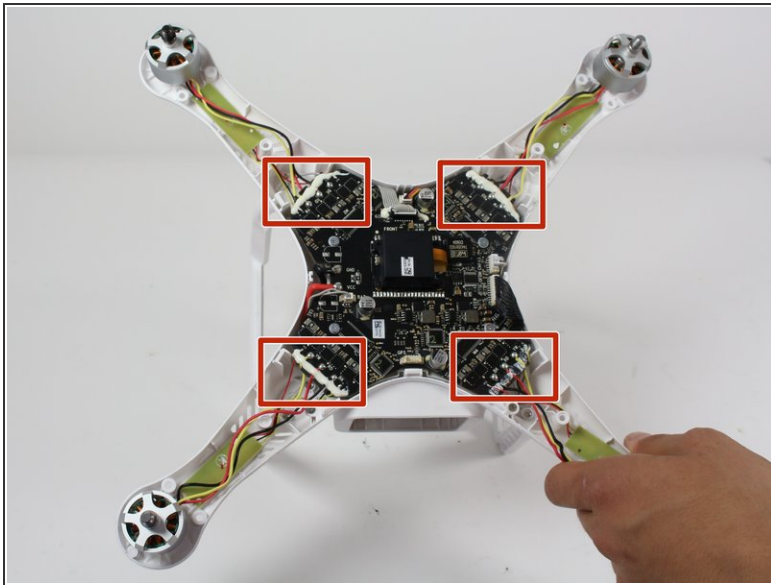
- Carefully flip the phantom back over with the motors facing up.
 - Peel back the silver stickers from the seam in the cover.
 - Using a plastic spudger, slowly separate the two halves of the plastic shell.
-  This step requires some force, and the plastic will click loudly as the shell separates.
-  Do not fully remove the cover. There is a wire that needs to be detached from the control board before the cover is completely free.

Step 8



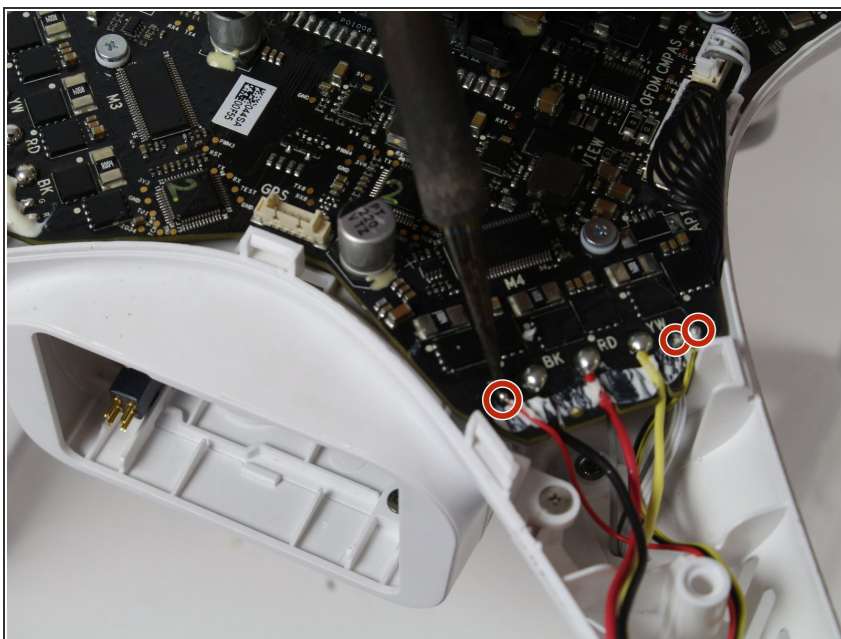
- Slowly remove the upper half of the plastic case about halfway. There is a ribbon cable that's connects the cover and the control board.
- Follow the ribbon cable to the control board and locate the connector that connects the cable to the control board.
- Press the tab on the side of the connector and pull up on the cable.
- Continue to remove the shell the rest of the way.

Step 9 — LED



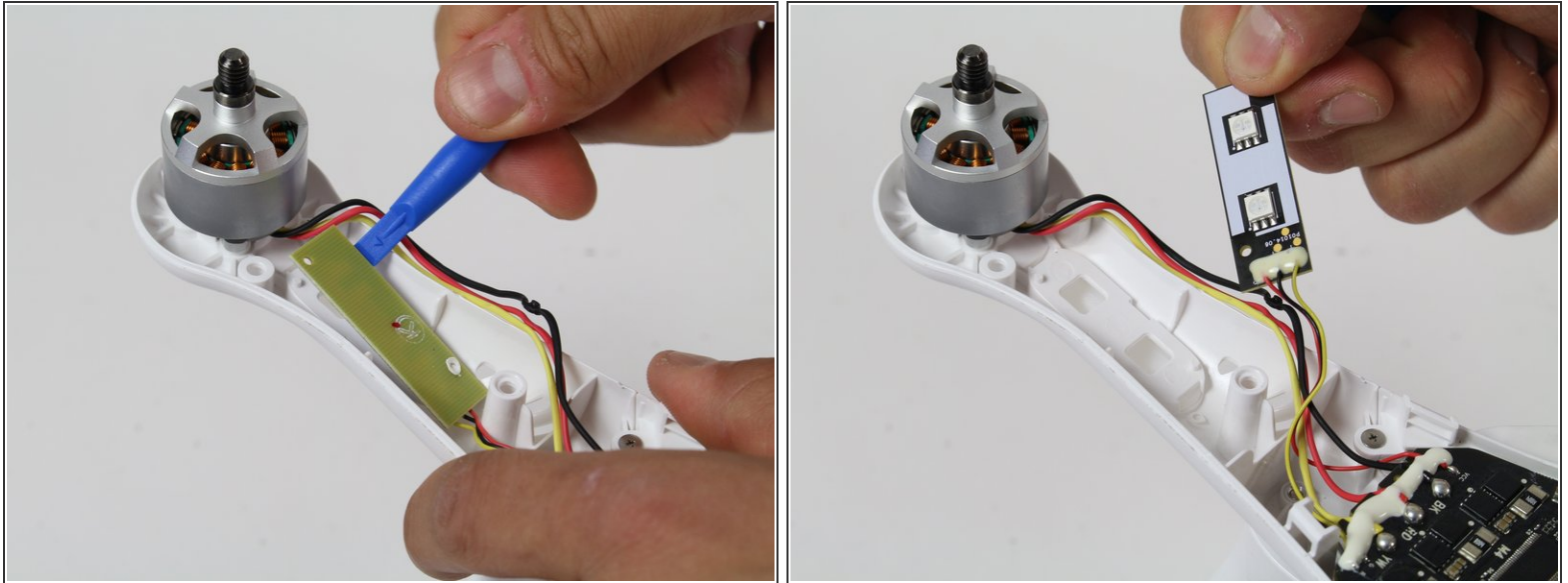
- Follow the red, yellow and black wires from the LED to where they connect on the control board.
 - Scrape off the glue with a plastic opening tool. Use a metal opening tool if needed.
- i** The LED wires are smaller than the motor wires.

Step 10



- Desolder the red, yellow and black wires that connect the LED to the control board. Check out the link below for more information on desoldering. [Desoldering Information](#)

Step 11



- Use a plastic opening tool and wedge it under the LED.
- Press down on the plastic opening tool and remove the LED.

To reassemble your device, follow these instructions in reverse order.