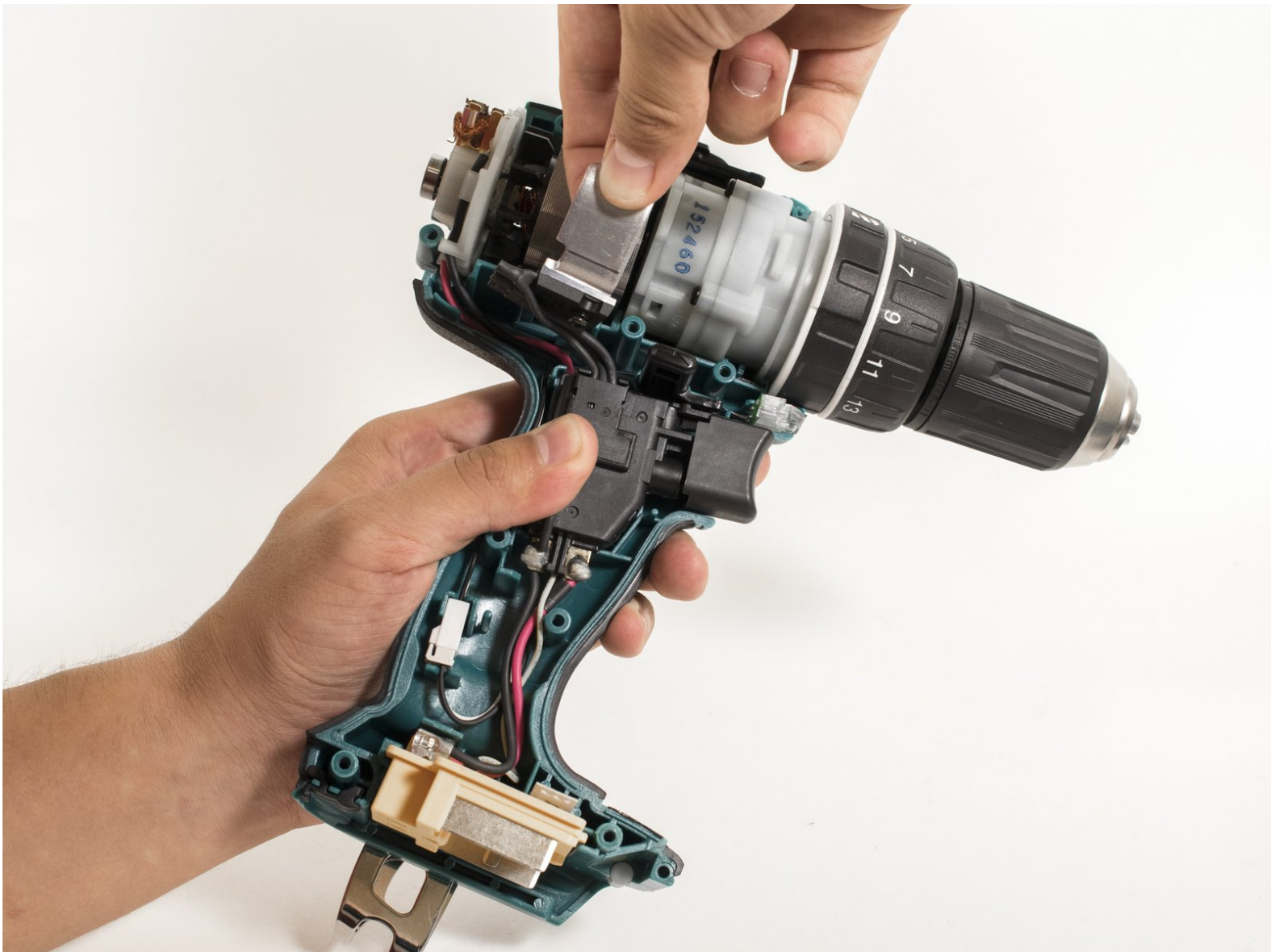




Makita XPH01 Clutch Leaf Spring Replacement

This guide will show you how to replace the clutch leaf spring of the Makita XPH01.

Written By: Eric Herwatt



INTRODUCTION

This guide will show you the necessary steps to locate and replace the forward/reverse switch. It shows how to remove the battery and the outer casing in order to locate the forward/reverse switch of the drill.

TOOLS:

- [Pair of Hands](#) (1)
 - [Spudger](#) (1)
 - [Phillips #2 Screwdriver](#) (1)
-

Step 1 — Battery



- Hold the drill upright.
- Place your finger on the white battery-release button.

Step 2



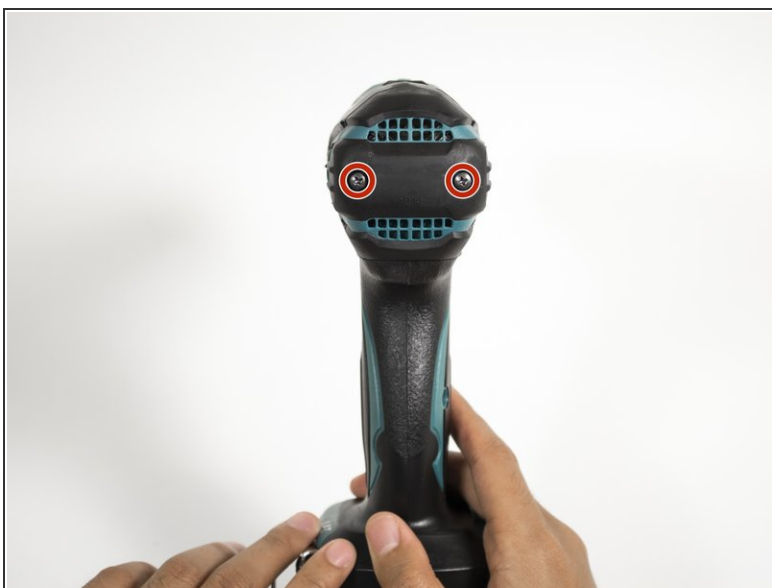
- Press and hold the white release button located on the front of the battery.

Step 3



- Slide the battery forward while pressing down on the white battery-release button.

Step 4 — Outer Casing



- Hold the drill upright with the back panel facing you.
- Unscrew the two 18 mm screws from the back panel using a Phillips PH2 screwdriver.

Step 5



- Apply slight pressure to the sides of the backplate and pull away from the drill.

Step 6



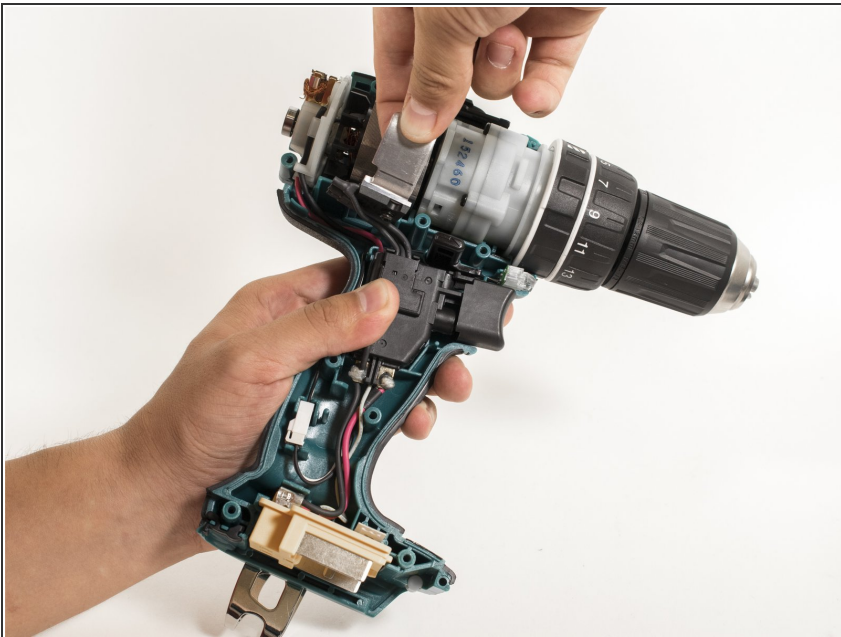
- Unscrew the nine 18 mm screws from the outer casing using a Phillips PH2 screwdriver.

Step 7



- Apply slight pressure to the sides of the outer casing and pull away from the drill.

Step 8 — Clutch Leaf Spring



- Pull the silver metal clip located towards the back of the motor assembly away from the drill.

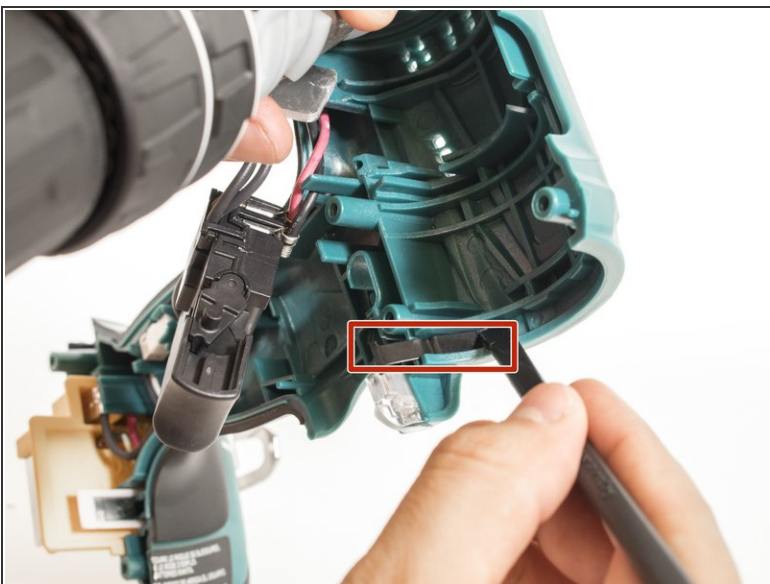
Step 9



- Grip the motor comfortably towards the front of the assembly, and pull it away from the outer casing.

⚠ The wires are still connected to the back of the motor assembly, so use caution when pulling the motor out. Failing to do this will result in parts falling off the back of the motor.

Step 10



- Slide the clutch leaf spring off with the spudger.

To reassemble your device, follow these instructions in reverse order.