



# Sony Vaio SVE111B11L Keyboard Assembly Replacement

Written By: John Noll



---

## TOOLS:


Phillips #0 Screwdriver (1)

iFixit Opening Tool (1)

---

### Step 1 — Battery



 Remove the charging adaptor. Some charge may still be in the battery or computer. **DO NOT** touch connectors or copper yellow connector.

- Locate the battery on the bottom of the computer.
- Flip the computer so that the battery faces you.

## Step 2



- Locate the two latches with the words “lock” and “release” on them.

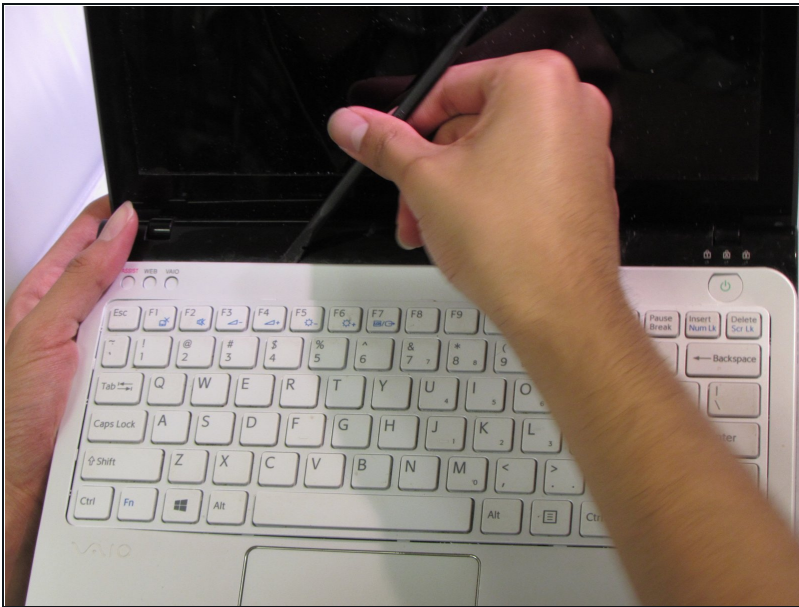
## Step 3



- Push the latches towards each other and lift the battery to remove it.

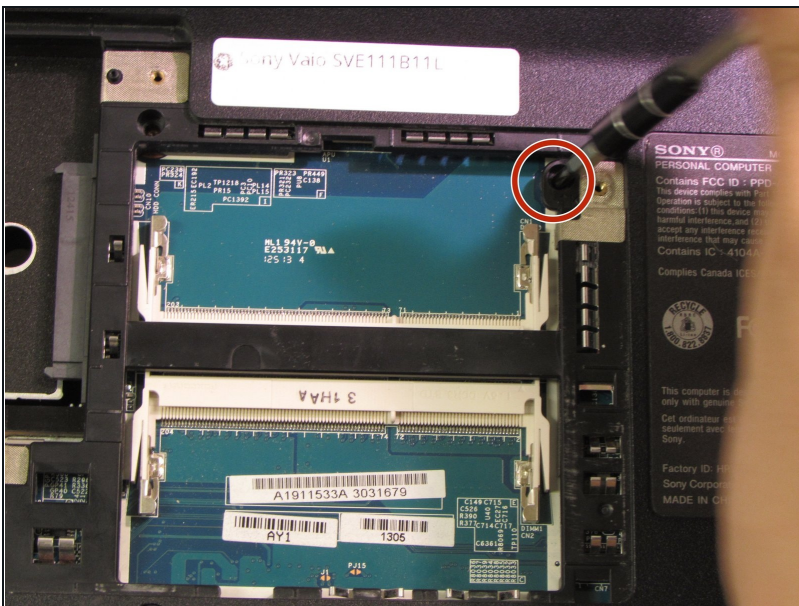


## Step 4 — Keyboard Assembly



- Remove the memory door on the bottom of the computer to access the screw for the keyboard.
- ❗ The screws for the memory door do not come out.

## Step 5



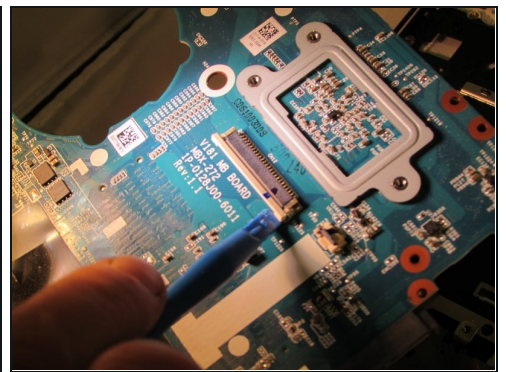
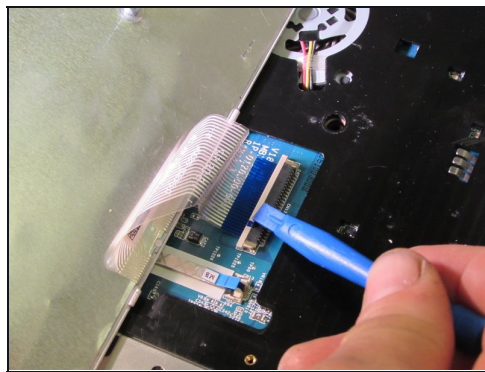
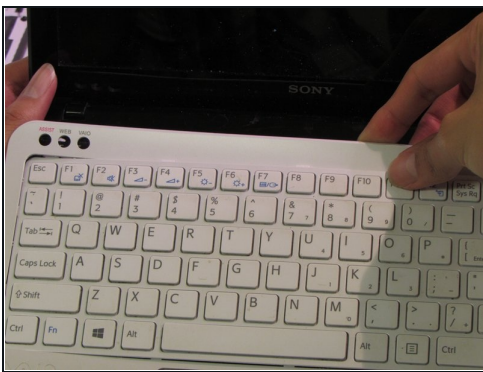
- Remove the 6.7 mm screw that holds the keyboard assembly in place.

## Step 6



- ❗ Be careful not to break the keyboard wire connection.
- Slide the wires out, away from the solder connections.
- Flip the computer over and open it.

## Step 7



- Gently pry the keyboard assembly from the screen side, using an opening tool. You will need to lift the keyboard about two inches.
- Using an opening tool, gently pull out and slightly up on the connector clip.
- Gently lift the keyboard assembly up and out.

---

To reassemble your device, follow these instructions in reverse order.