



Samsung Galaxy Tab Pro 8.4 Charging Port Replacement

This guide shows how to replace the charging port for the device.

Written By: Jonathan Romine





TOOLS:

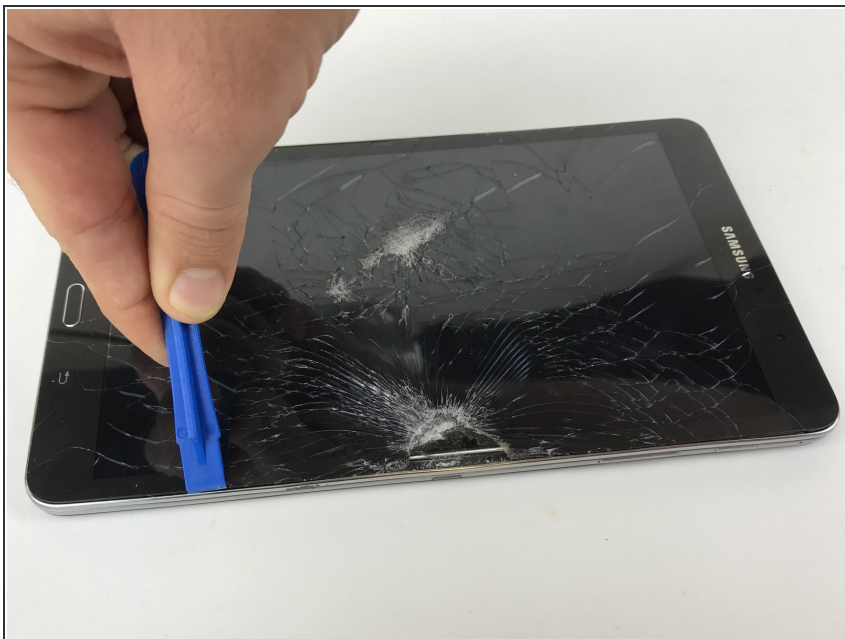
- [iFixit Opening Tools](#) (1)
- [Phillips #000 Screwdriver](#) (1)



PARTS:

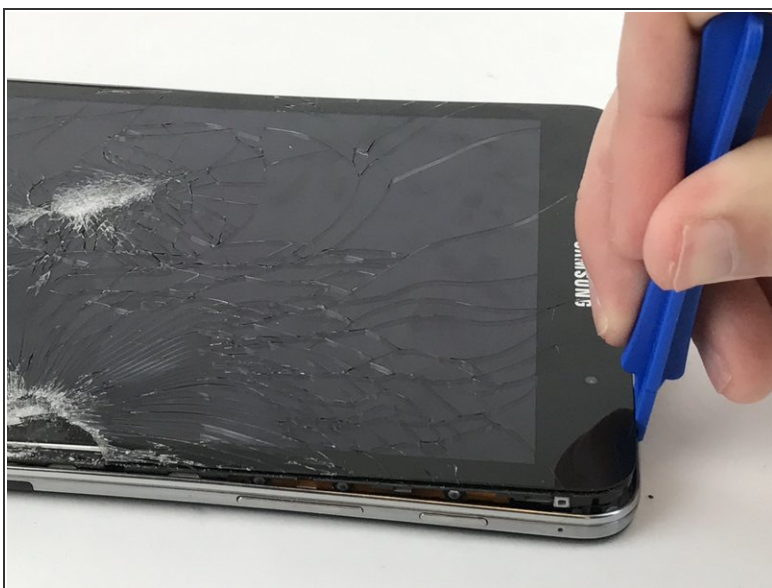
- [Galaxy Tab Pro 8.4 Charging Assembly](#) (1)

Step 1 — Battery



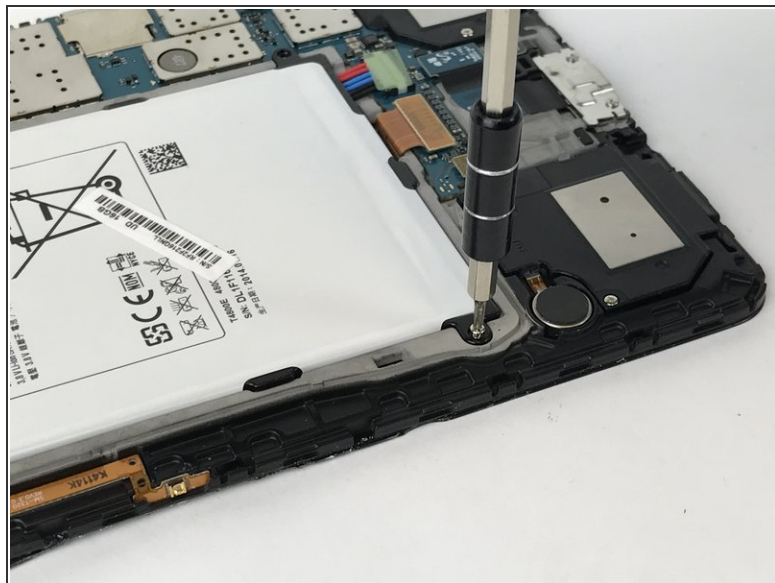
- Begin by separating the back panel from the screen glass assembly using the plastic opening tool.
- Insert the plastic opening tool between the edge of the glass screen and the metal frame around the device.

Step 2



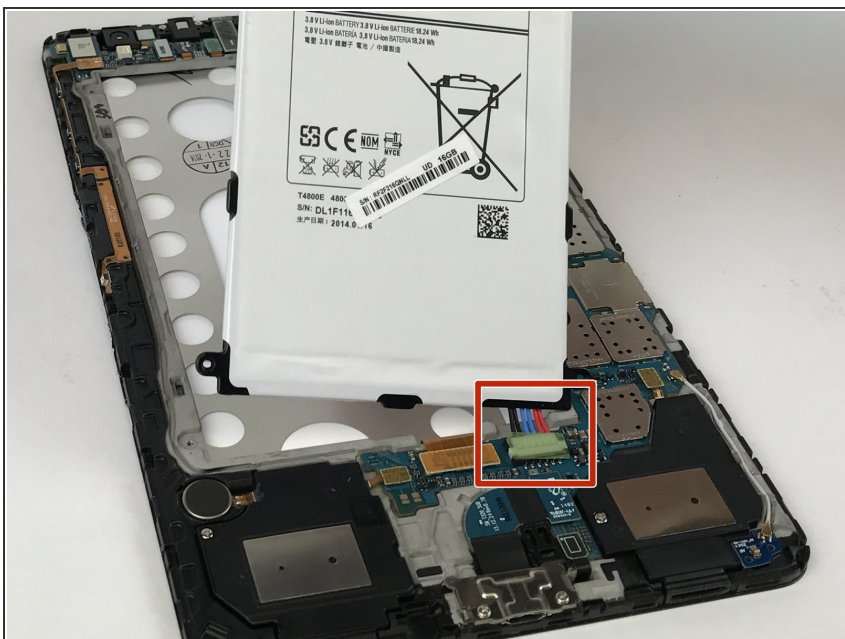
- Continue around the entire device until the back panel is completely separated from the screen.

Step 3



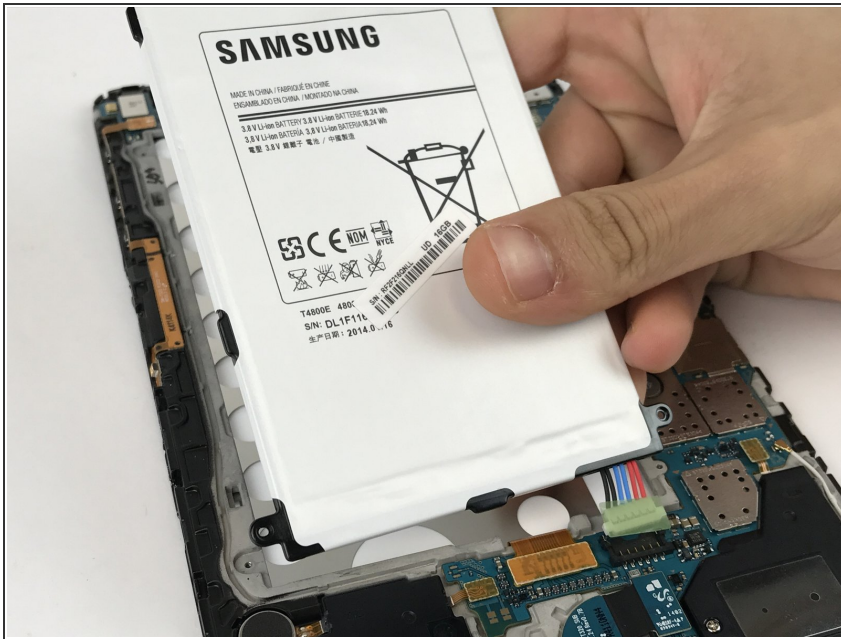
- Remove the four 2.5mm Phillips #000 screws.

Step 4



- Gently pull up on the plastic tab that has red, blue and black wires that connects the battery to the motherboard.

Step 5



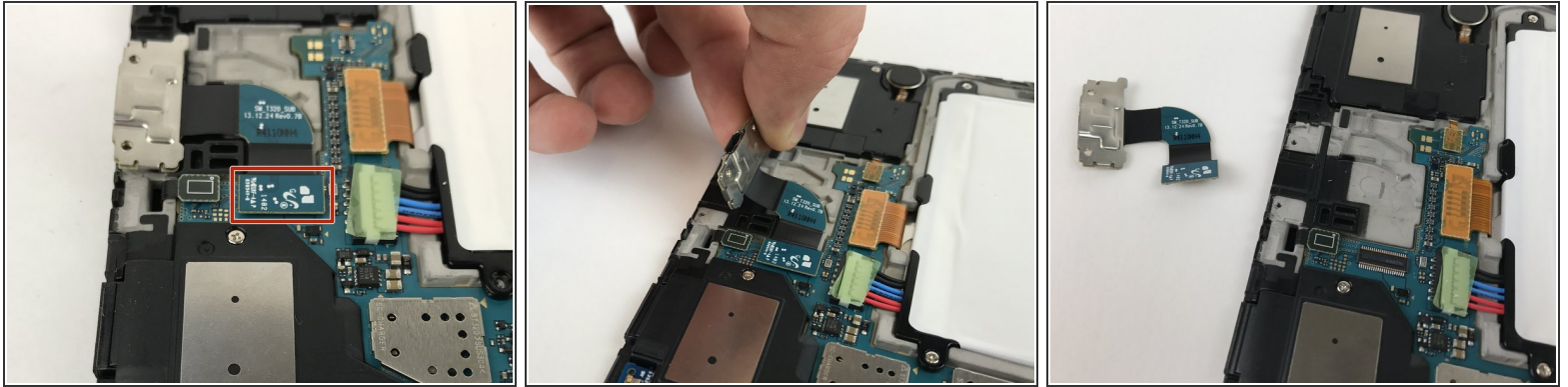
- The battery should be completely disconnected and the new one can be installed.

Step 6 — Charging Port



- Remove the two 2.5mm Phillips #000 screws.

Step 7



- Gently pull up on tab that connects the charging port to the motherboard

To reassemble your device, follow these instructions in reverse order.