



Motorola Droid Turbo 2 Battery Replacement

Replace a dead or worn out battery for the Droid Turbo 2.

Written By: Arthur Shi



INTRODUCTION

Follow this guide to replace a worn out battery for the Motorola Droid Turbo 2. If your battery is swollen, [take appropriate precautions](#).

For your safety, discharge your existing battery below 25% before disassembling your phone. This reduces the risk of a dangerous thermal event if the battery is accidentally damaged during the repair.



TOOLS:

- [SIM Card Eject Tool](#) (1)
- [iOpener](#) (1)
- [Spudger](#) (1)
- [iFixit Opening Picks \(Set of 6\)](#) (1)
- [T3 Torx Screwdriver](#) (1)




PARTS:

- [Motorola Droid Turbo 2 Replacement Battery](#) (1)
- [Motorola Droid Turbo 2 Rear Cover Adhesive](#) (1)

Step 1 — Midframe




 Power off your phone before you begin working.

- Insert a SIM eject tool, SIM eject bit, or a straightened paperclip into the small hole in the SIM card tray.
- Press to eject the tray.
- Remove the SIM card tray assembly from the phone.

Step 2



- [Heat an iOpener](#) and apply it to the top edge of the phone for a minute.

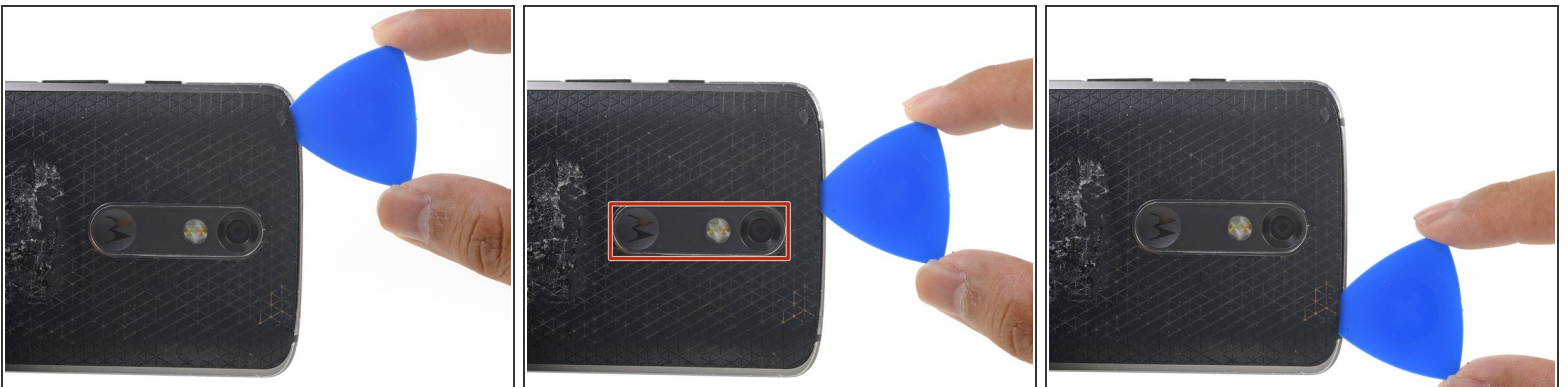
 A hair dryer, heat gun, or hot plate may also be used, but be careful not to overheat the phone—the display and internal battery are both susceptible to heat damage.

Step 3



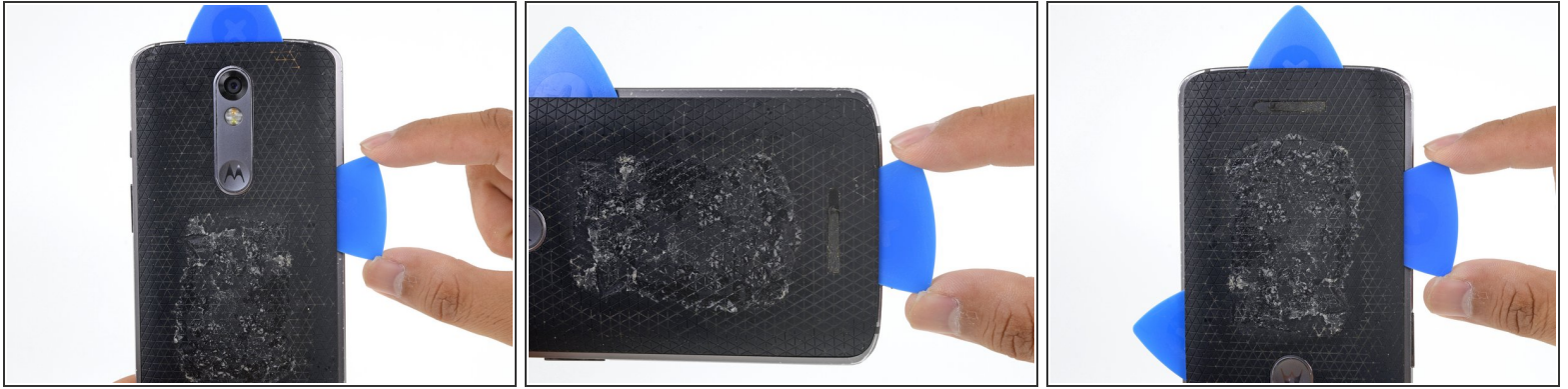
- Angle an opening pick and firmly press so that it slips under the back cover.
- ❗ Depending on the age of the phone, this can be difficult. Additional heating with the iOpener may help. You can [pry carefully with a metal spudger](#) to create a gap for the opening pick.

Step 4



- Slide the opening pick along the top edge of the phone to break up the adhesive.
- Use the pick to release the deeper areas but avoid slicing through the camera bezel area.

Step 5



- Repeat the iOpener heating and slicing procedures for the remaining three sides.
- ⓘ Make sure to cut into the deeper areas as the back cover is held on by a large adhesive surface.

Step 6



- Once you have cut through the adhesive, slowly peel the back cover away from the frame.
- Remove the back cover.
- ✦ During reassembly, follow this [rear cover adhesive guide](#) to properly apply the pre-cut adhesive strip.

Step 7



- Insert an opening pick under the flash connector rubber cover and pry forward to remove it.

☑ To reinstall the cover, [align the cover](#) and use your finger to push it forward into place.

Step 8



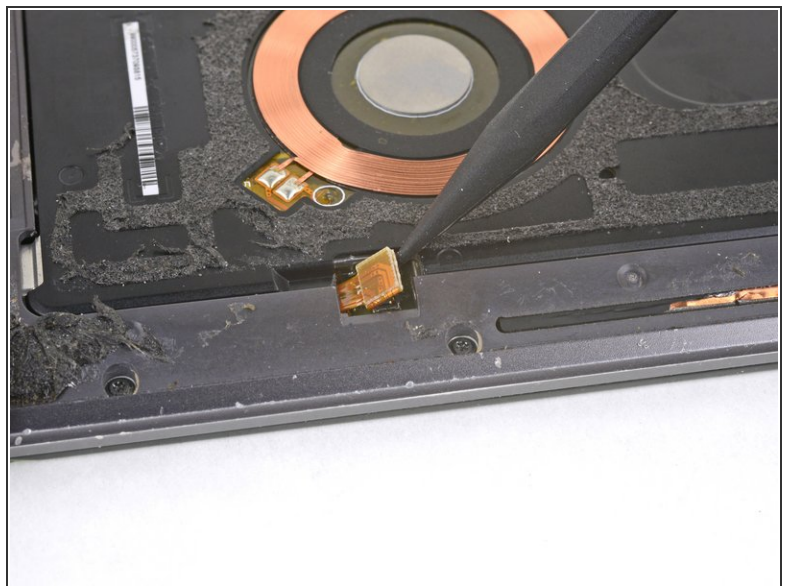
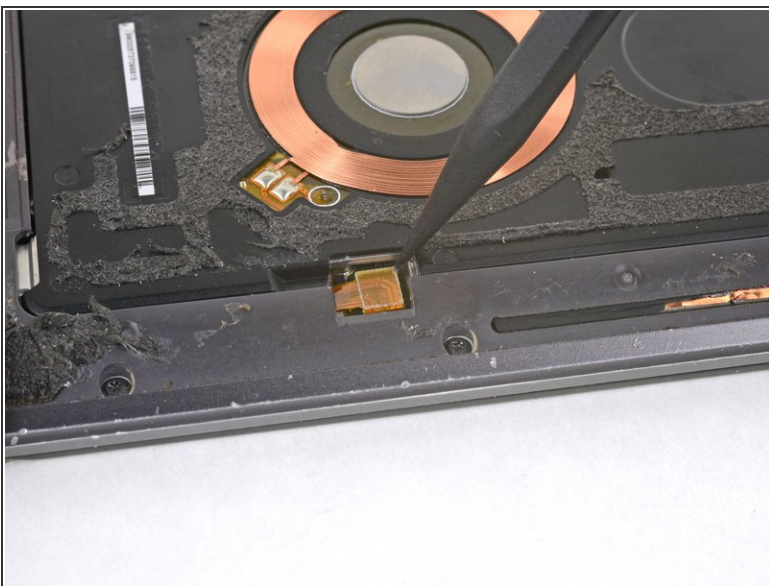
- Use the point of a spudger to pry up and remove the coil connector rubber cover.
- To reinstall the cover, [align the cover](#) and use your finger to push it forward into place.

Step 9



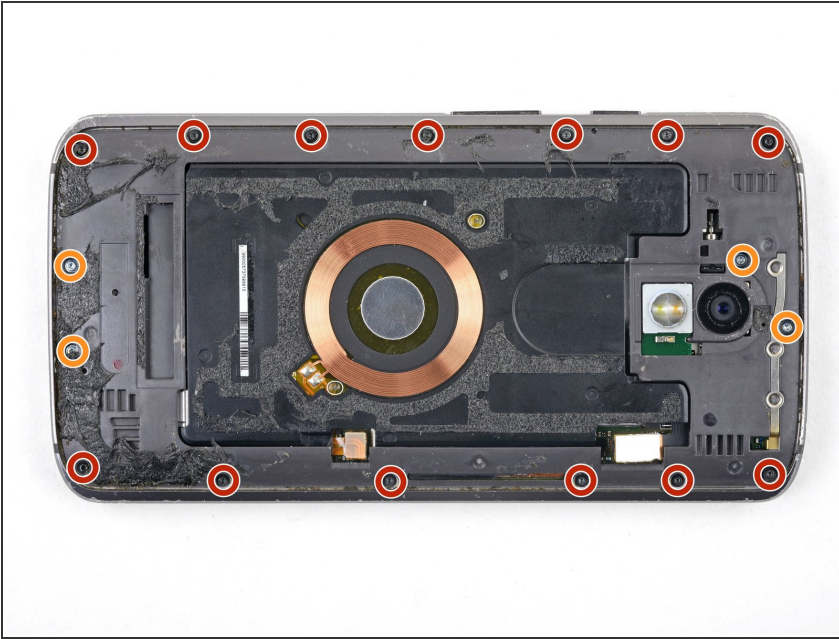
- Use the point of a spudger to pry up and disconnect the flash connector.
- ✦ To re-attach [press connectors](#) like this one, carefully align and press down on one side until it clicks into place, then repeat on the other side. Do not press down on the middle. If the connector is misaligned, the pins can bend, causing permanent damage.

Step 10



- Use the point of a spudger to pry up and disconnect the wireless charging coil connector.

Step 11



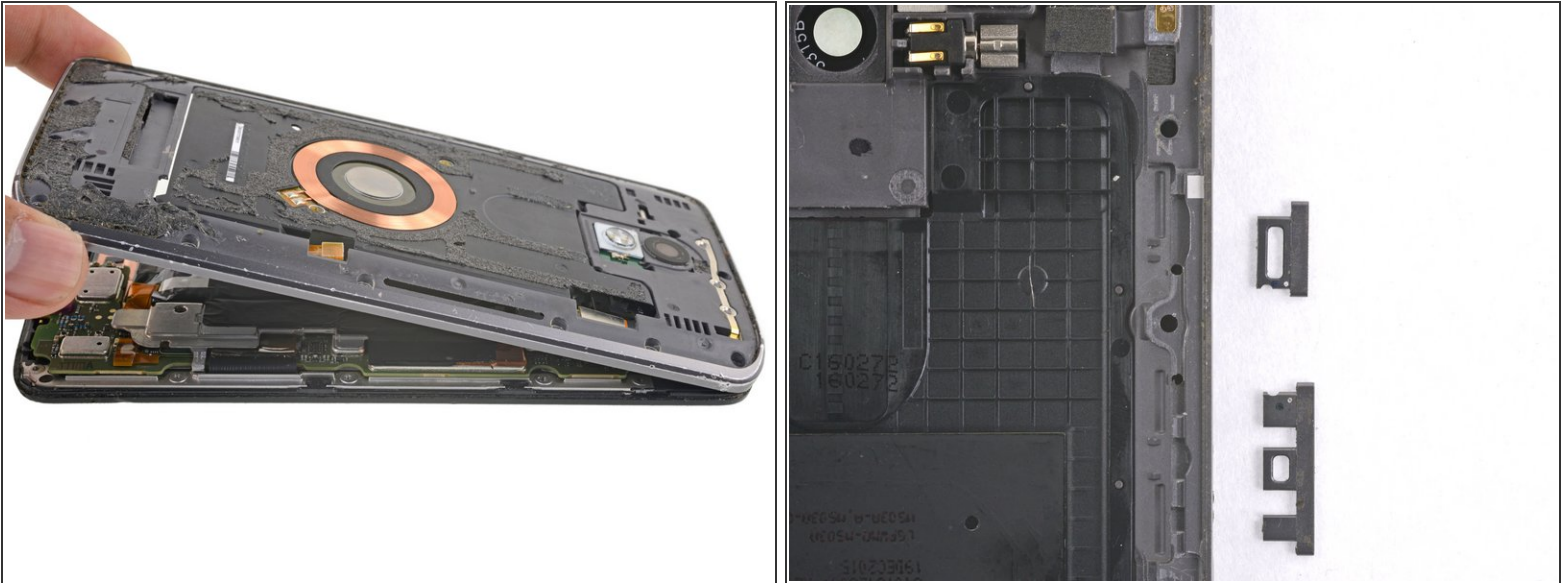
- Remove the following T3 screws securing the midframe:
 - Thirteen 3.1 mm black screws
 - Four 4.3 mm silver screws
- ⓘ Due to screw and bit variance, you may have better luck with a T4 driver. The proper bit should seat fully in the screwhead and feel *slightly* loose. The bit should not feel like it's stuck in the screwhead.

Step 12



- Insert an opening pick along the frame seam and twist slightly to release the midframe from the phone.

Step 13



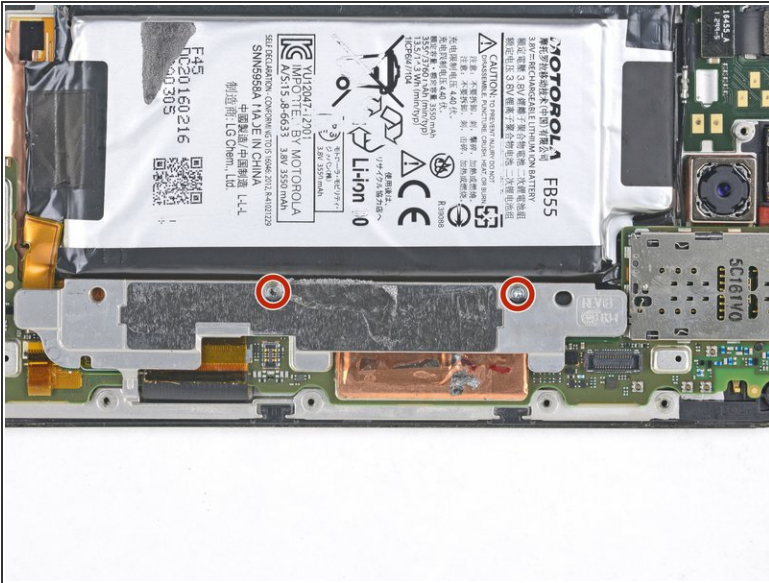
- Remove the midframe from the phone.
 - ⓘ You can tape over the side buttons to prevent them from falling out during your repair.
 - ⓘ If the buttons fall out of the midframe, reinsert them in the orientation as shown before you reinstall the midframe.

Step 14 — Battery



- Carefully peel the black graphite layer from the phone.
 - ☑ While it is unnecessary for normal operation, the graphite layer can be reused during reinstallation if it is in good condition.

Step 15



- Remove the two 4.2 mm T3 screws securing the metal bracket adjacent to the battery.
- Remove the metal bracket.

Step 16



- Use the point of a spudger to pry up and disconnect the battery pack connector.

Step 17



- Angle and insert an opening pick under the long edge of the battery away from the motherboard side.
- Insert a second opening pick along the same battery edge next to the first pick.

Step 18



- Apply firm, constant prying pressure to the picks to release the battery from the frame.
 - As the battery loosens from the frame, move the picks inward and continue to pry upwards.
 - ⓘ The battery is secured to the frame with strong double-sided tape. To help release the battery, apply some high concentration (90% or higher) isopropyl alcohol under the battery to help loosen the adhesive.
- ⚠ Don't deform or puncture the battery, or it may leak dangerous chemicals or catch fire.

Step 19



- Remove the battery.

⚠ Never reinstall a damaged or deformed battery. Replace the battery.

- ☑ To reinstall the battery, orient it such that the wires exit near the bottom towards the motherboard side.

- To help with alignment, connect the battery *temporarily* to the motherboard before adhering it in place. Disconnect the battery before you continue with re-assembly.

- ☑ Clean off any adhesive residue which may prevent the battery from sitting flush against the frame. Use a few strips of [adhesive included in the battery kit](#) or some [double-sided tape](#) to secure the battery to the frame.

To reassemble your device, follow these instructions in reverse order.

Take your e-waste to an [R2 or e-Stewards certified recycler](#).

Repair didn't go as planned? Check out our [Motorola Moto Droid Turbo 2 Answers community](#) for troubleshooting help.