



Toshiba Satellite C855D-S5303 Hard Drive Replacement

This guide will show you how to remove your...

Written By: Courtney Burns



INTRODUCTION

This guide will show you how to remove your laptops hard drive. This process requires a small Phillips Head screwdriver and your hands. There will be several small screws removed, so be sure you have a place to store them as you work to keep from losing any.

TOOLS:

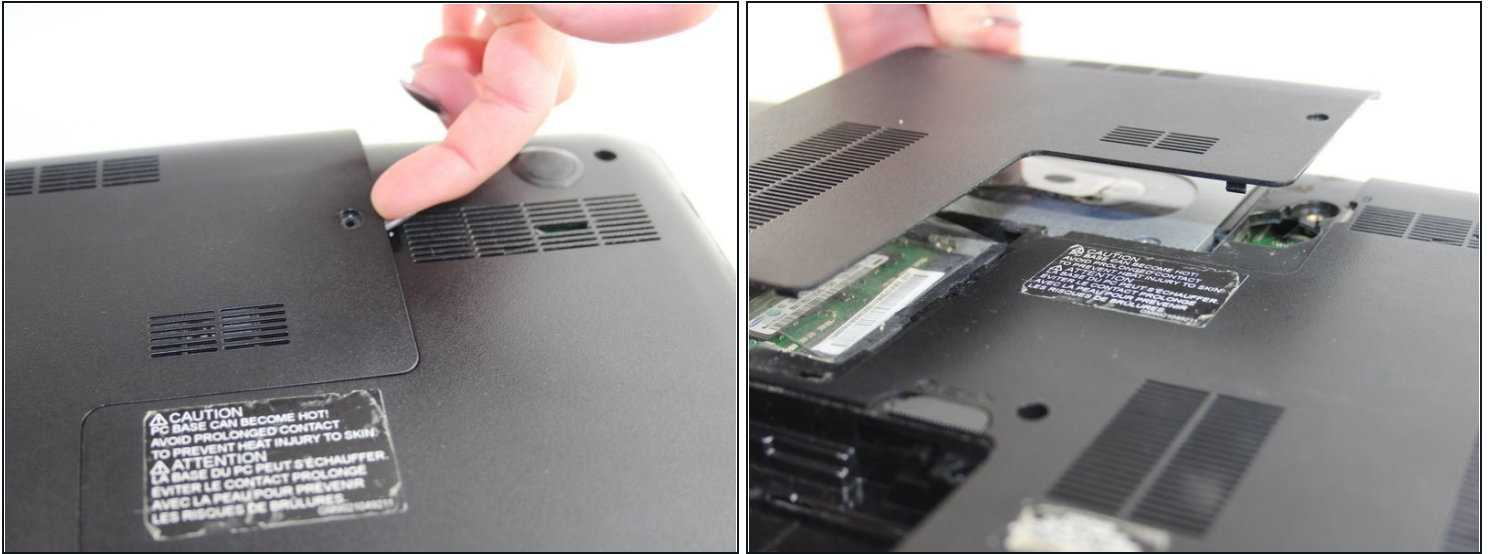
[Small Phillips Head Screwdriver](#) (1)

Step 1 — Hard Drive



- Using a small Phillip's head screwdriver, unscrew the single 7 mm screw (5 mm head) on the L-shaped panel on the backside of the laptop.

Step 2



- Once the screw is removed, pry the panel upwards by gripping the groove pictured.

⚠ Be careful while removing the panel. Don't apply too much force when lifting as you may crack the plastic.

Step 3



- Locate the hard drive. It is in a metal casing as pictured.
- To remove, grab the right side of the piece and slide leftwards.
- Lift up and out.

To reassemble your device, follow these instructions in reverse order.