



Acer Aspire 3000 Keyboard Replacement

This guide will walk you through the process of swapping out an old keyboard for a new one.

Written By: Lykia Harper



INTRODUCTION

This step-by- step process demonstrates how to replace an old keyboard on your Acer Aspire 3000. It is important to follow the steps carefully in order to prevent damage to the connectors or laptop itself upon removal of the keyboard. Damage to the connectors may cause a bad connection with the new replacement keyboard. Use caution to always remove the battery whenever you are repairing parts of your device.



TOOLS:

- [Metal Spudger](#) (1)
 - [J1 Screwdriver Bit](#) (1)
 - [64 Bit Driver Kit](#) (1)
-

Step 1 — Battery



- Begin with the device face down.
- Orient the laptop so that the battery is on the side opposite of you and the headphone ports are facing towards you.

Step 2



- Slide the button found below the battery to the left into the unlocked position.
- ⓘ You will know the battery is unlocked if the tab is pushed to the side where the symbol is unlocked.

Step 3



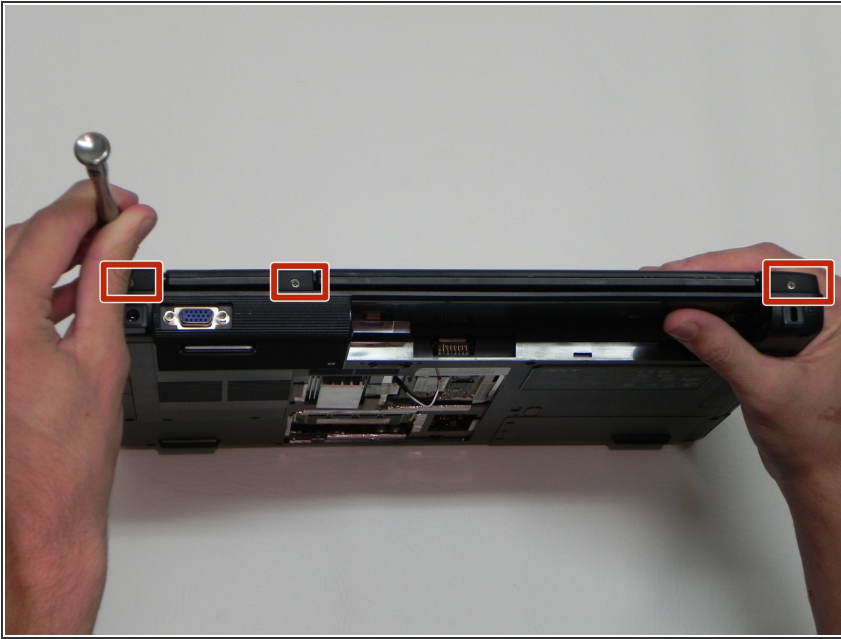
- Locate the battery and the tab to the right of it.
 - Pull the tab to the right while simultaneously pushing the battery away from you.
- ⚠ Make sure you push the battery only when tab is held in the right position in order to avoid damage to the device.

Step 4 — Keyboard



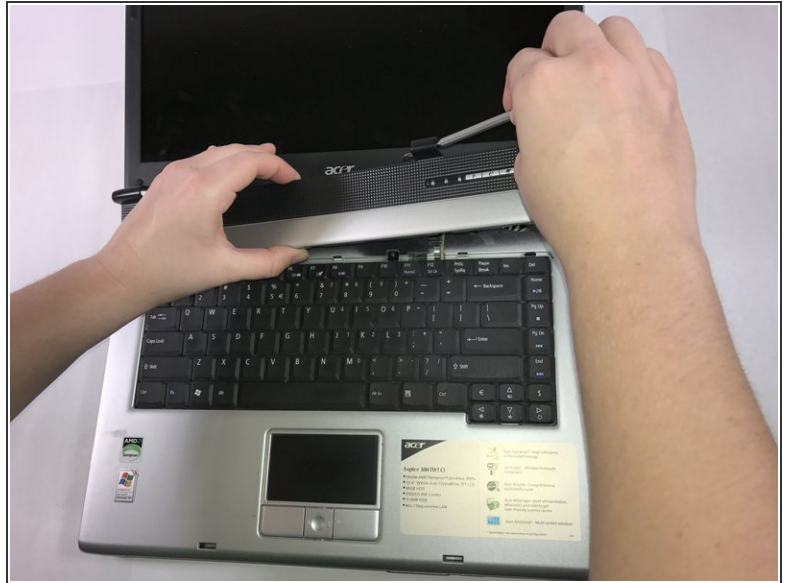
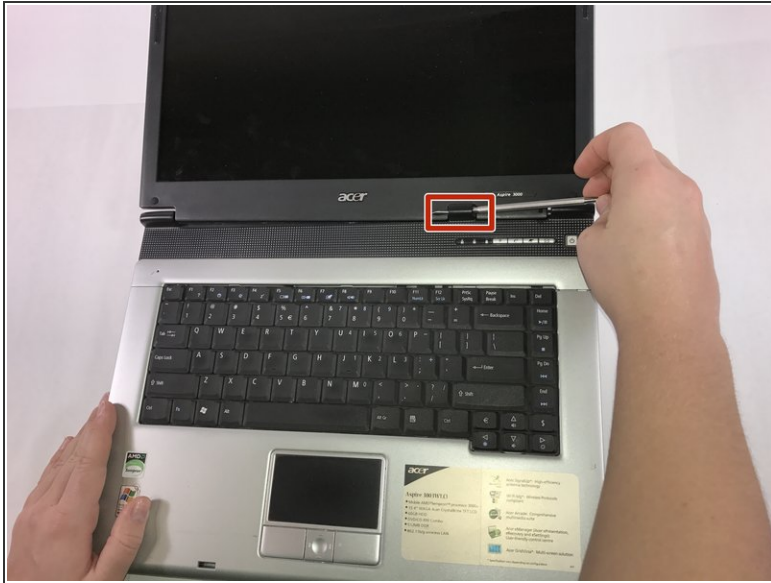
- Lift the laptop to be on its edge, with the bottom of the screen in the air.

Step 5



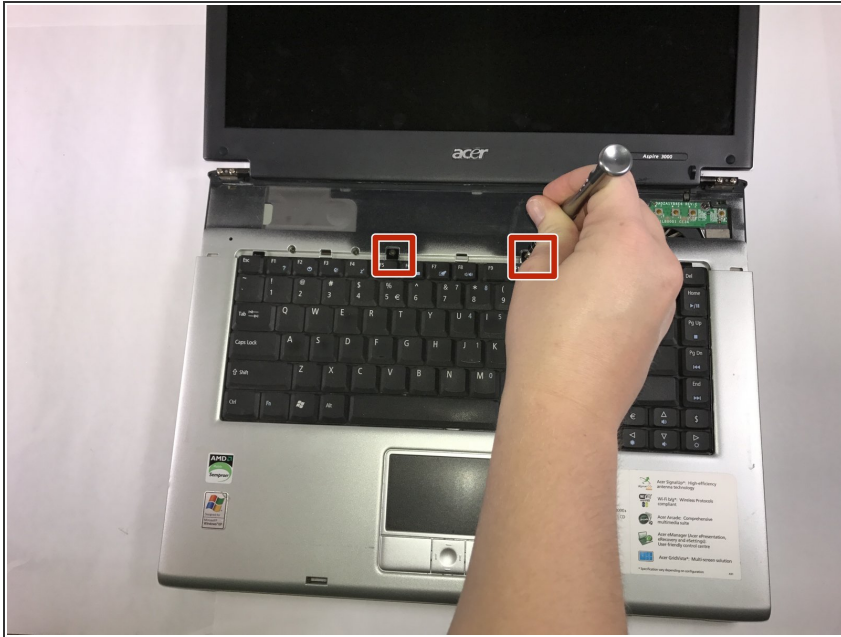
- Remove the three 4.6 mm Phillips #1 screws that are on this edge.

Step 6



- Wedge a spudger into the latch on the right side.
 - ⓘ Open the lid completely to facilitate removal.
- Pull the handle of the spudger towards you to pop the first of the tabs that hold this piece in place.
- Starting from right to left, pop the remaining tabs by lifting up on the panel and rotating the panel to the left.

Step 7



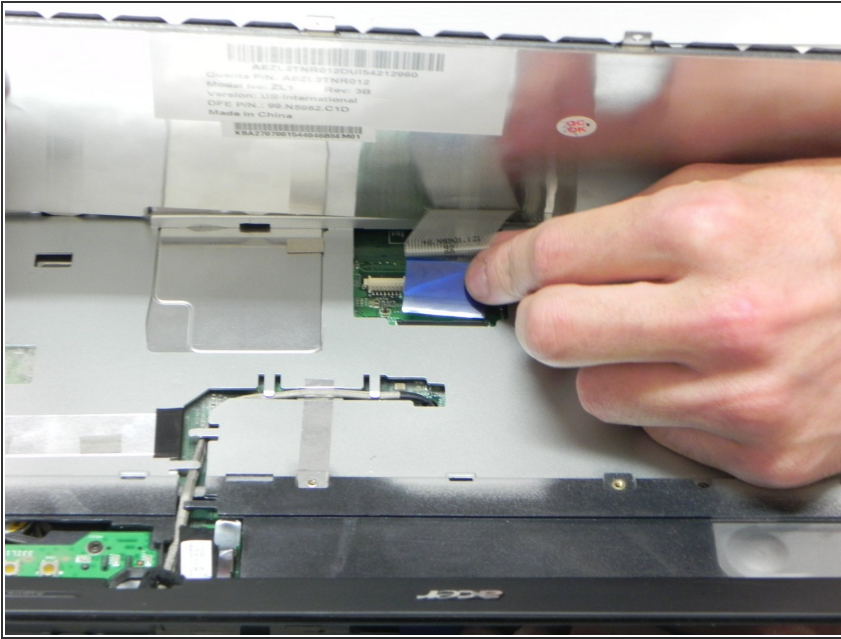
- Unscrew the two 4.6 mm Phillips #1 screws.

Step 8



- Gently lift the top edge of the keyboard out of its place.
- ⚠ Do not completely remove the keyboard as there is still a ribbon cable connecting it to the device.

Step 9



- Lift the ZIF connector's black retaining flap. Then gently slide the ribbon cable out.
- Remove the keyboard.

To reassemble your device, follow these instructions in reverse order.