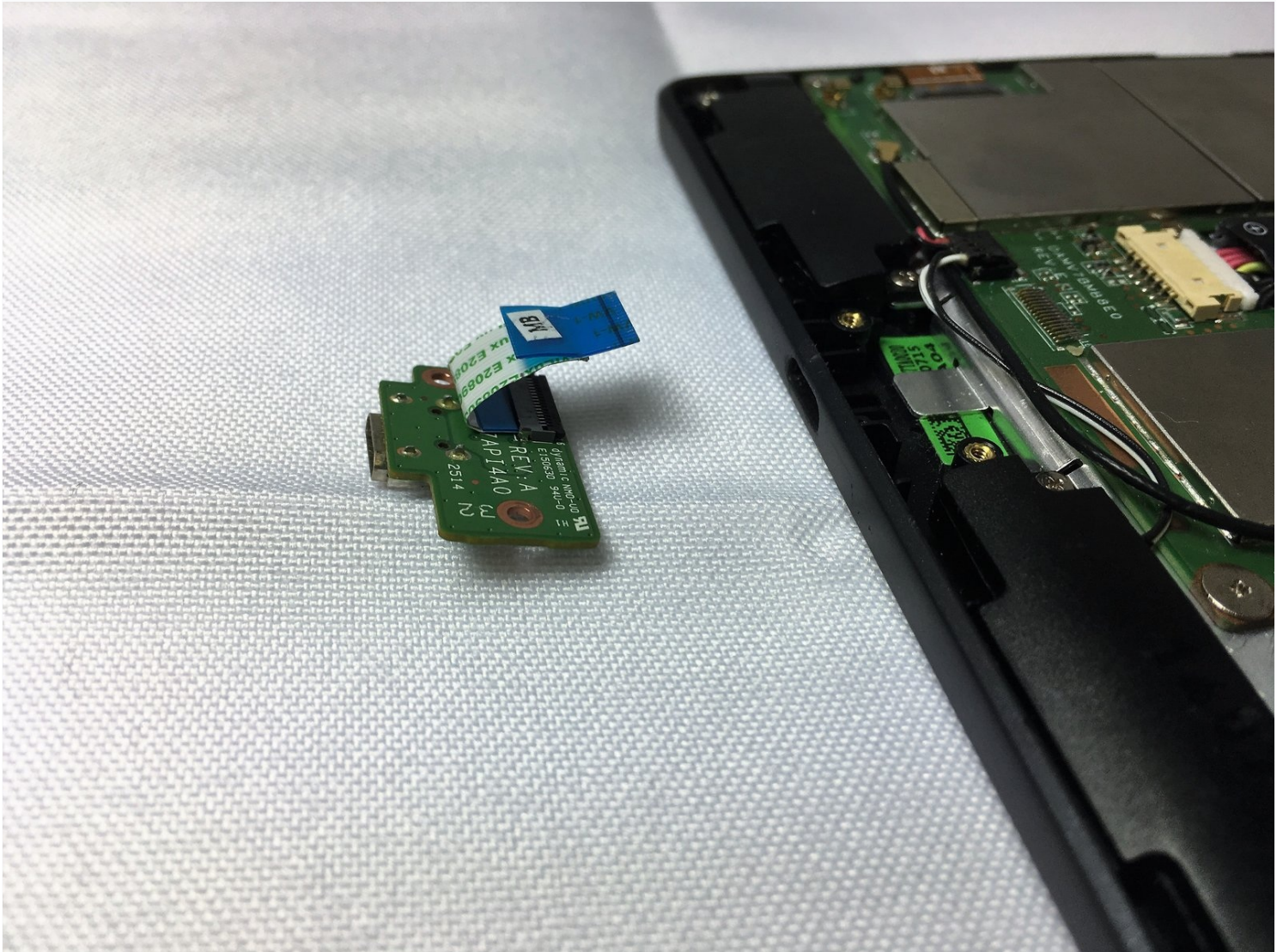




Verizon Ellipsis 7 Charging Port Replacement

This guide will show you how to replace a...

Written By: Anthony Arredondo



INTRODUCTION

This guide will show you how to replace a charging port (Micro-USB) on a Verizon Ellipsis 7: invaluable to fixing a broken charging port and allowing continued use of the device. This process will need opening tools and tweezers, as well as a Phillips #00 screwdriver. Use caution, as performing the actions in this guide incorrectly could break your device.

TOOLS:

[iFixit Opening Tool](#) (1)
[Phillips #00 Screwdriver](#) (1)
[Tweezers](#) (1)

PARTS:

[Verizon Ellipsis 7 Replacement Micro-USB Port](#) (1)

Step 1 — Charging Port



- Hold down the power button until the screen goes black to turn off the device.
- Remove the SIM card from the device to prevent damage.
 - To remove the SIM card, open the SIM card cover on the side of the device.
 - Push SIM card in and pull it out after hearing a click.

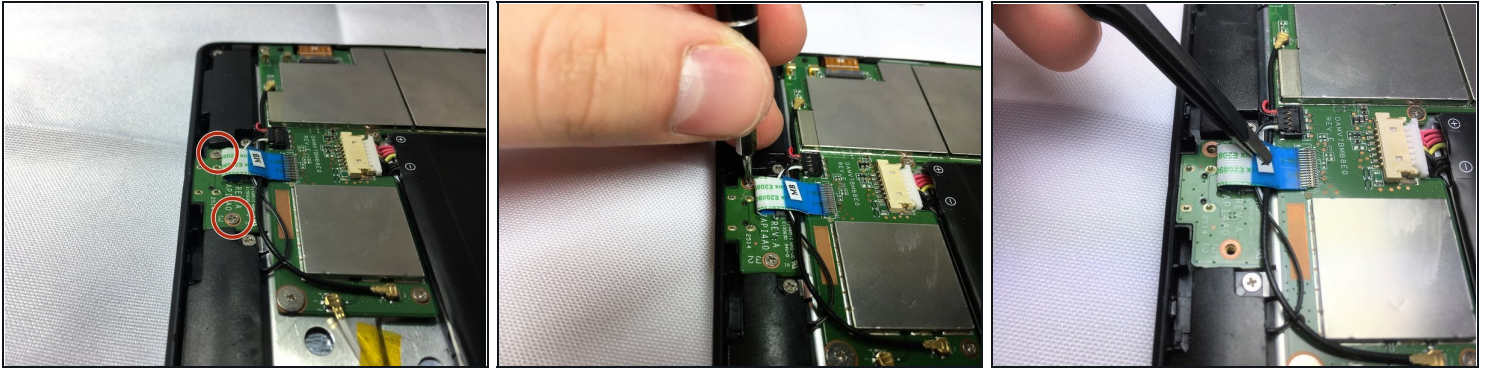
Step 2



- Take off the back panel.
- Pry open the back cover carefully with a plastic opening tool.
- Use the opening tool to disconnect the cover completely. Do not attempt to pry the back cover off with your hands.

⚠ Be sure to pry open all sides of the device. Attempting to take off the back cover when part of it is attached may snap the cover.

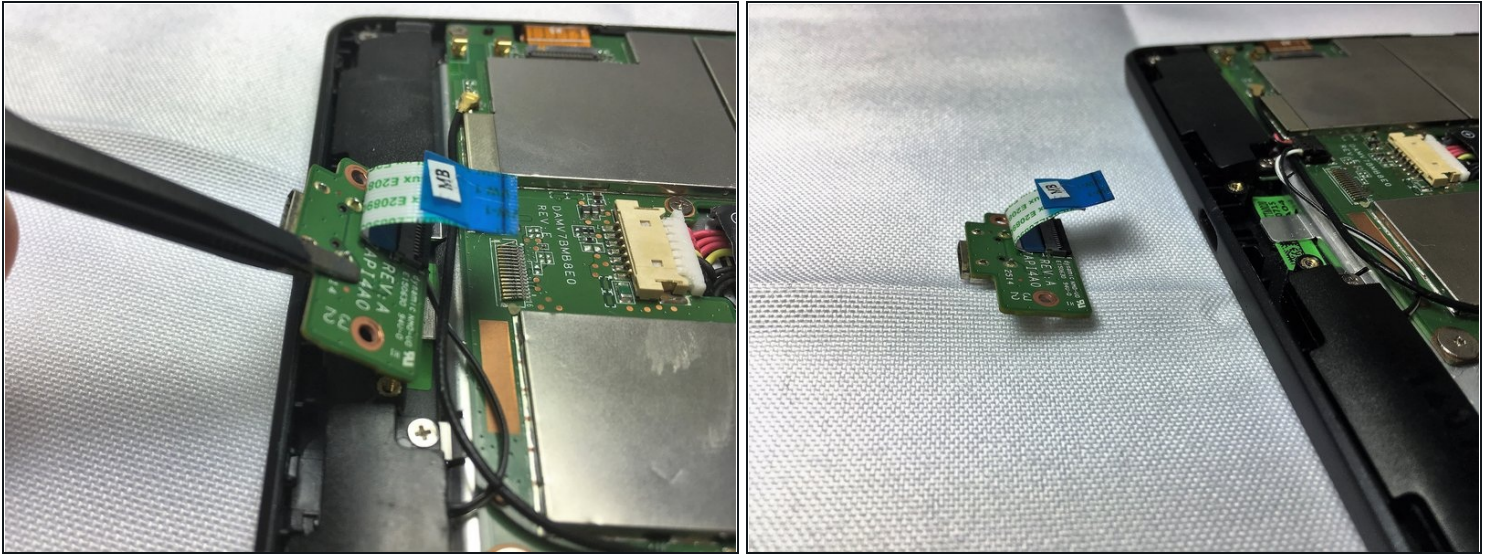
Step 3



- Remove the charging (micro-USB) port.
 - Unscrew the indicated screws using the Phillips #00 screwdriver.
 - ⓘ The screws shown in the picture are the more common 4.76 mm.
- Disconnect the ribbon cable connecting the charging port board to the motherboard using [tweezers](#).
 - Use the tweezers to grab the sides of black, plastic connector. Do not grab from the wires or try to wedge it out from the bottom.

⚠ Be extremely careful when disconnecting the ribbon cable. It is very delicate.

Step 4



- Remove the charging port board from the phone using tweezers.
- Place the replacement charging port into the phone.
⚠ Be cautious when replacing the ribbon cable onto the new charging port board.

To reassemble your device, follow these instructions in reverse order.