



Brother PT-90 Personal Labeler Disassembly

How to open the Brother PT-90 Label-Maker to see the internals.

Written By: Tessa Hathaway



INTRODUCTION

This is an easy-to-teardown device and shows you the inner workings of the label maker. The main components are batteries and the label cartridge for the tape, and a few screws to further tear down the device.



TOOLS:

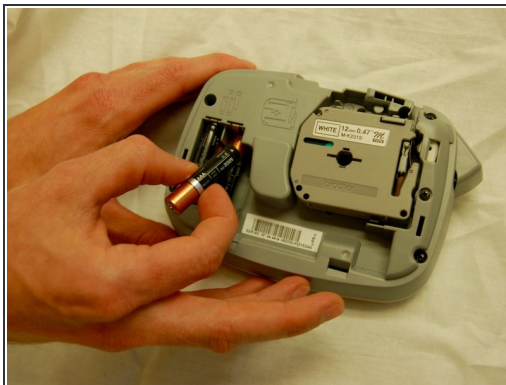
- [J1 Screwdriver Bit](#) (1)
 - [iFixit Opening Tool](#) (1)
-

Step 1 — Brother PT-90 Personal Labeler Disassembly



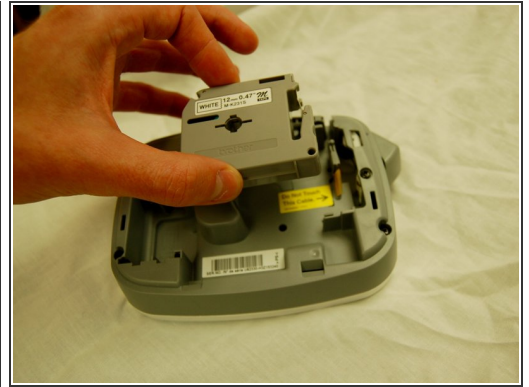
- Start with your device off. The screen should be blank and not displaying anything.
- Turn the device over so it's resting face down.
- You should be able to see the model name of the label-maker, as well as a window in which you can view the label cartridge.

Step 2



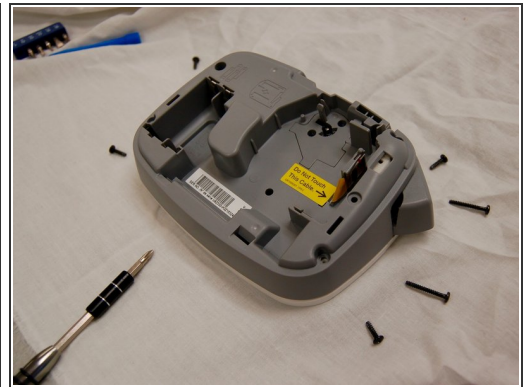
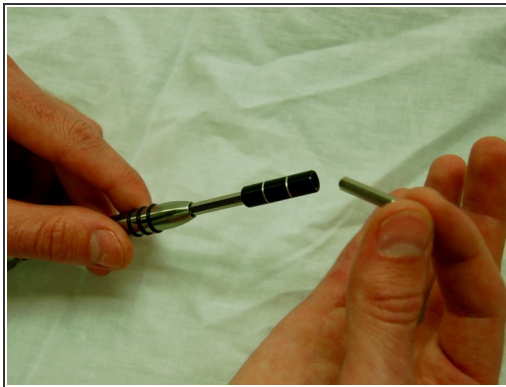
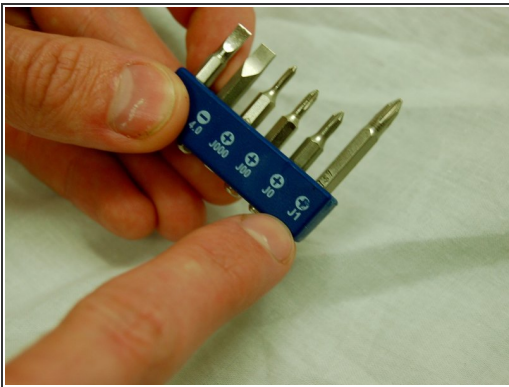
- Using your thumb, press in and then upward on the fastener at the top of the device. The back of the device should come off easily.
- Remove the 4 batteries located on the left side of the device.

Step 3



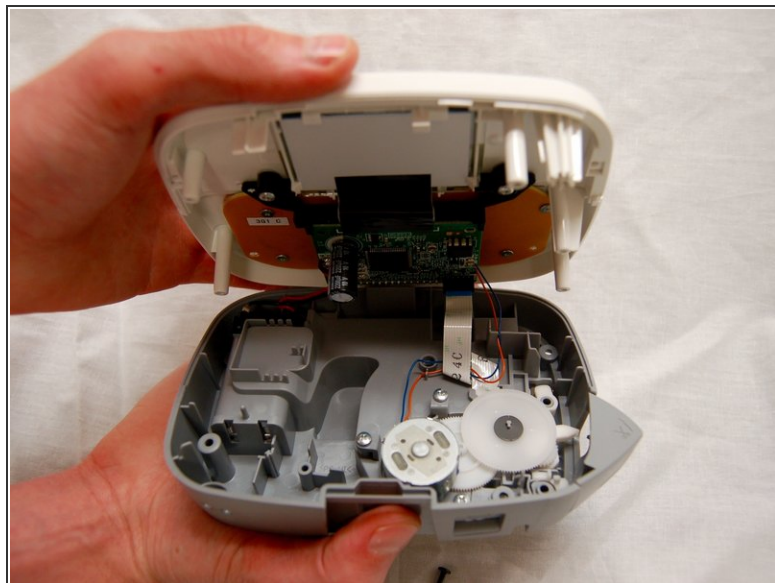
- To remove the label cartridge from the device, use a plastic opening tool from your iFixit tool kit.

Step 4



- Attach the J1 Screwdriver Bit to the extension tool from your tool kit.
- Remove all of the screws from the back of the device.

Step 5



- Once the screws have been removed, press as shown on the fastener.
- Carefully open the device.