



Fixing a Jammed Paper-Roll in your Brother PT-90 Personal Labeler

This guide will teach you how to fix a jammed paper-roll in your Brother PT-90 Label-Maker.

Written By: Kaitlyn Abrams



INTRODUCTION

This guide will teach you how to fix a jammed paper-roll in your Brother PT-90 Label-Maker.



TOOLS:

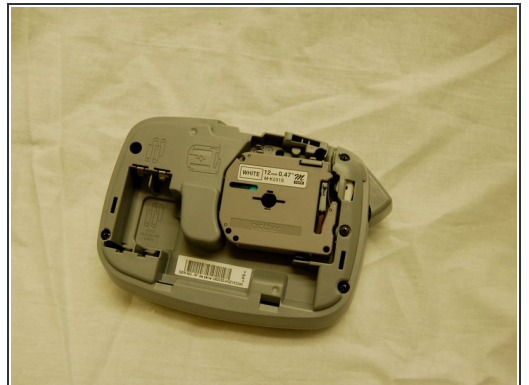
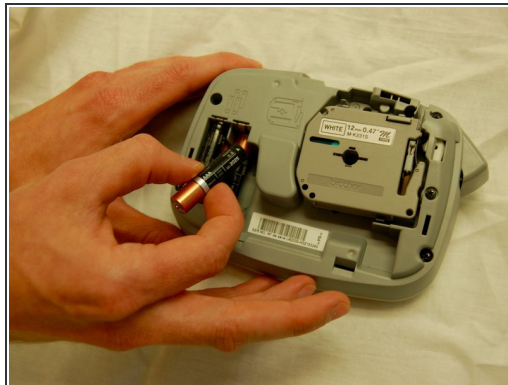
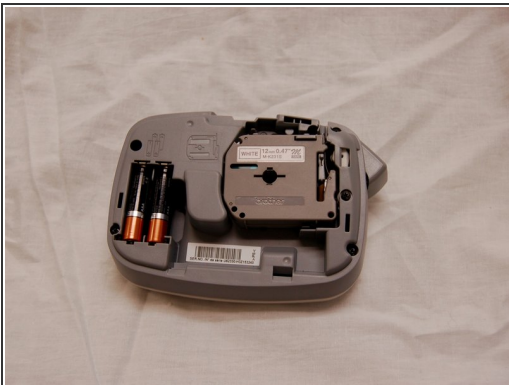
- [iFixit Opening Tool](#) (1)
-

Step 1 — Fixing a Jammed Paper-Roll in your Brother PT-90 Personal Labeler



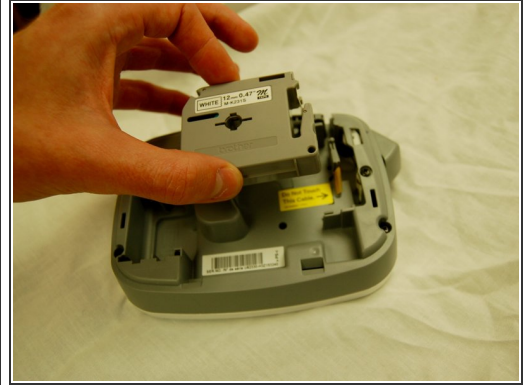
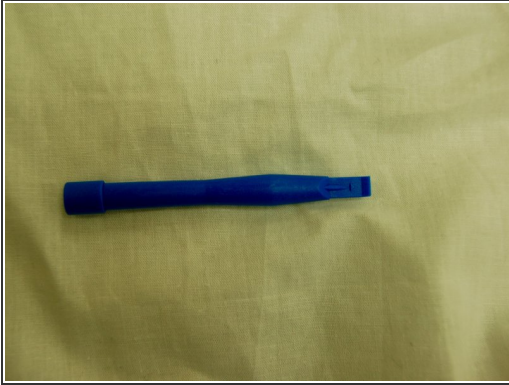
- Turn your label-maker on its face. Using your thumb, press in and then upward on the fastener located on the side of your device.

Step 2



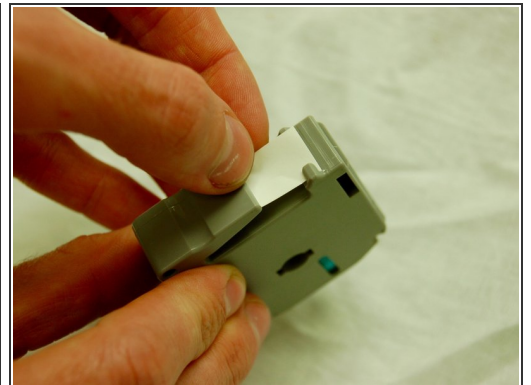
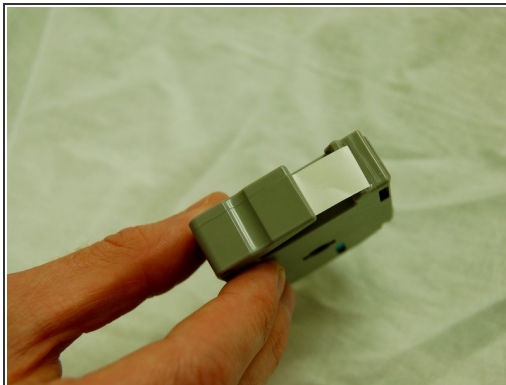
- Remove the batteries from your device.

Step 3



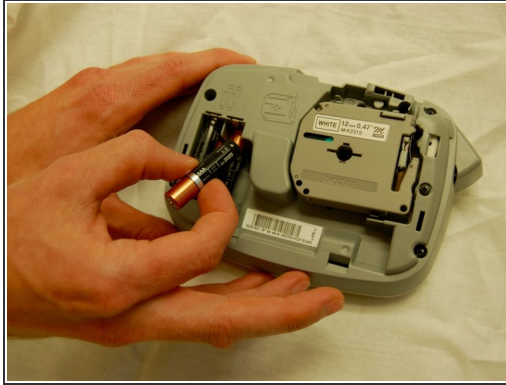
- Using a plastic opening tool from your iFixit tool kit, leverage the label cartridge out of your device.

Step 4



- Press the label paper back into alignment with the small holders on the right side of the label cartridge.

Step 5



- Place the label cartridge and batteries back into your device. Refasten the bottom case of the label-maker.

Step 6



- Well done! You have successfully corrected the paper-jam in your Brother PT-90 Label-Maker.

To reassemble your device, follow these instructions in reverse order.