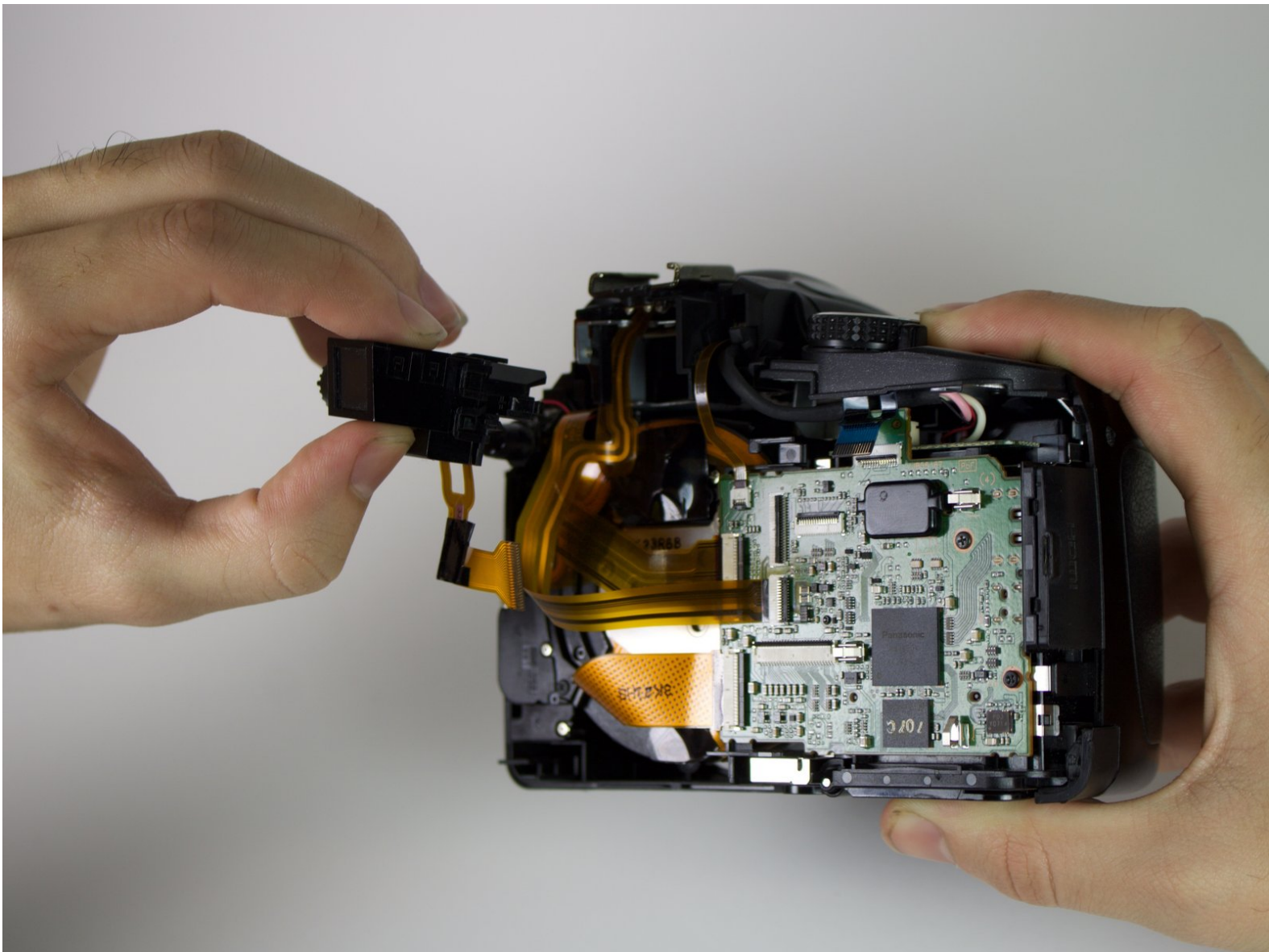




Panasonic DMC-FZ70 Viewfinder Replacement

This guide will demonstrate how to disassemble and replace the viewfinder for Panasonic's DMC-FZ70 digital camera.

Written By: Alberto Rodriguez



INTRODUCTION

In this guide, you will take apart the back panel in order to reach the camera's viewfinder. A camera's viewfinder is used to line up your eye-view to the photo shot of the camera. No special requirements are necessary other than to exercise caution when taking out the ribbons. If the image you see through the viewfinder is significantly different than what is seen through the camera, or if you seen nothing but black, then you need to replace the part using this guide. Before you begin, make sure that the battery and SD card have been removed.

TOOLS:

- [Phillips #00 Screwdriver](#) (1)
 - [T5 Torx Screwdriver](#) (1)
 - [Metal Spudger](#) (1)
 - [iFixit Opening Tools](#) (1)
 - [Pro Tech Toolkit](#) (1)
- 150 mm Flex Extension*
- [Phillips #0 Screwdriver](#) (1)
-

Step 1 — Back Panel



i All screws should be removed using a Phillips #0 screwdriver.

- Using your screwdriver, unscrew the two 5.0 mm Philips screws to the right of the LCD screen.

Step 2



- Flip the camera over to the left side of the screen and unscrew the 5mm Phillips screw found there.

Step 3



- Turn the camera upside down and unscrew the three 5mm screws found on the bottom.

Step 4



- On the top of the camera locate the two rails with a thin sheet of metal on the floor between them.
- With a metal spudger, lift this sheet and push it out of the rail device to detach it from the camera.

Step 5



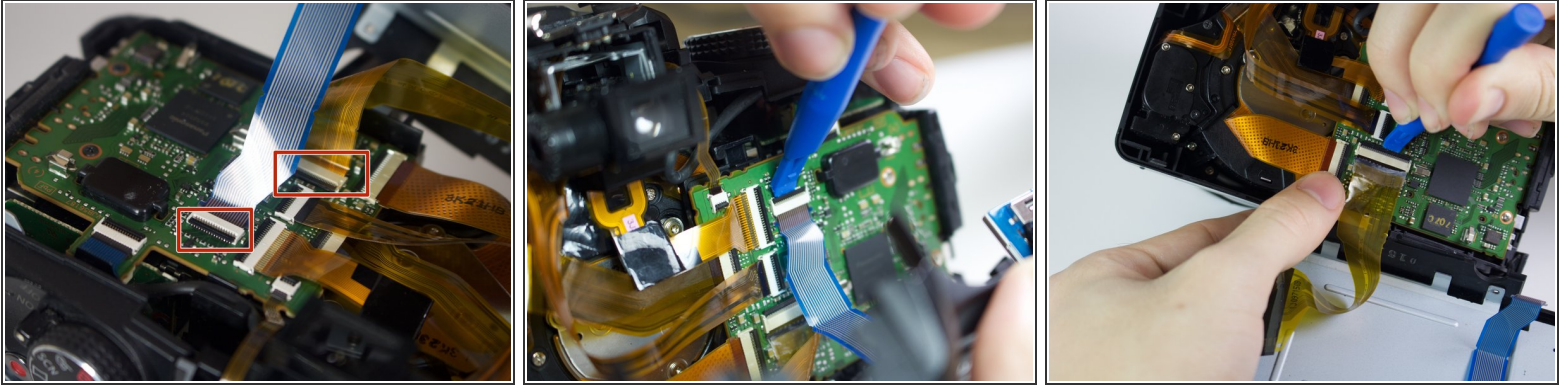
- Proceed to remove the four 5mm Phillips screws that you just uncovered.

Step 6



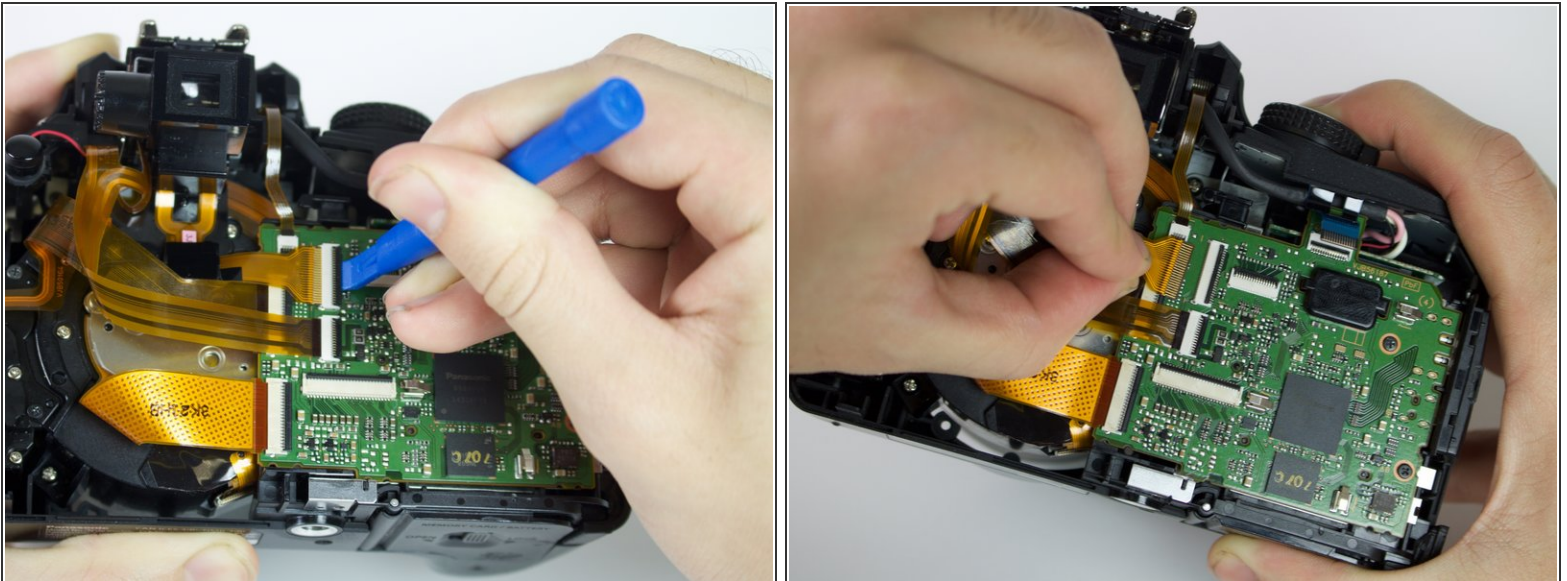
- Slowly pull on both side of the camera, until both halves begin to separate from each other.
- ⚠ Do not pull too hard, as both halves are held together with ZIF connector cables.

Step 7



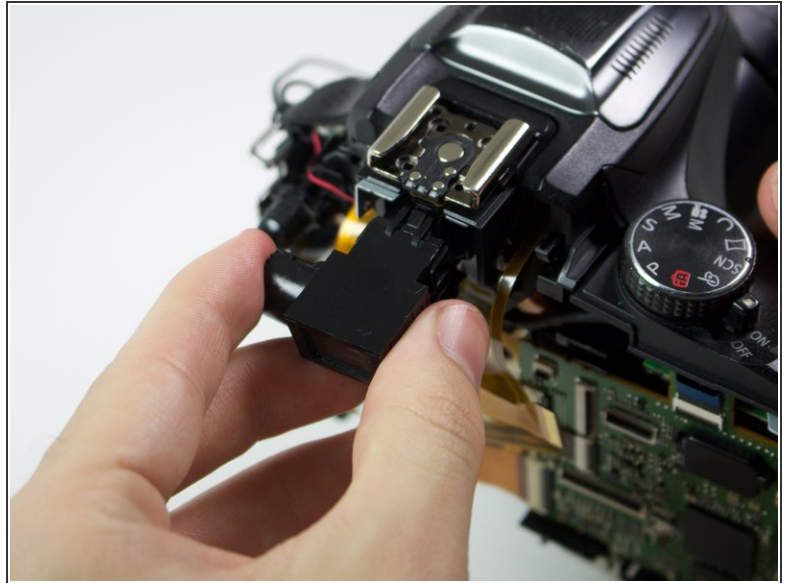
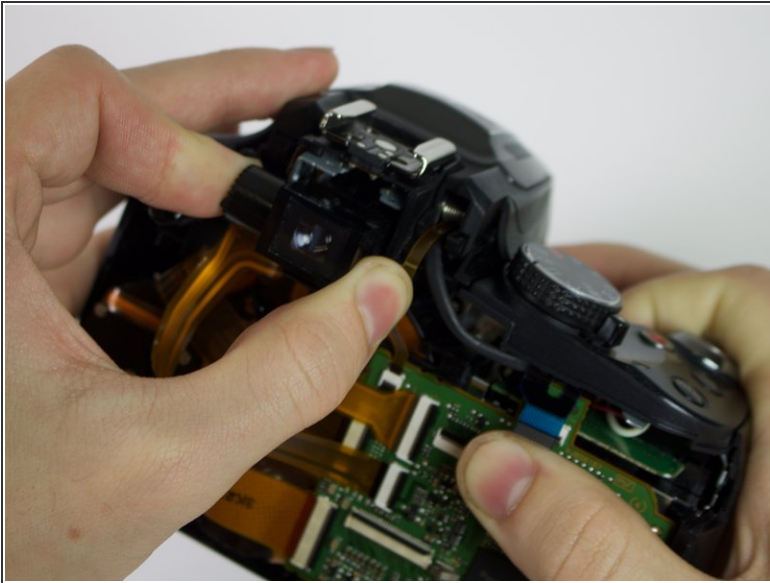
- Using a plastic opening tool, carefully flip up the small black levers that attach the ribbon cables to the ZIF connectors on the motherboard.
- Carefully pull the ribbon cables out of the slot once they have been released.
- ❗ Only the two indicated connectors need to be removed to separate the two halves of the camera.

Step 8 — Viewfinder



- Using a plastic opening tool, flip up the black switch on the ZIF connector that attaches the viewfinder to the motherboard.
- Once the connector has been opened, gently pull the cable from its slot.

Step 9



- Holding the sides of the viewfinder, pull it out of the camera.
- ⓘ Removing the viewfinder requires a strong, yet steady pull.

To reassemble your device, follow these instructions in reverse order.