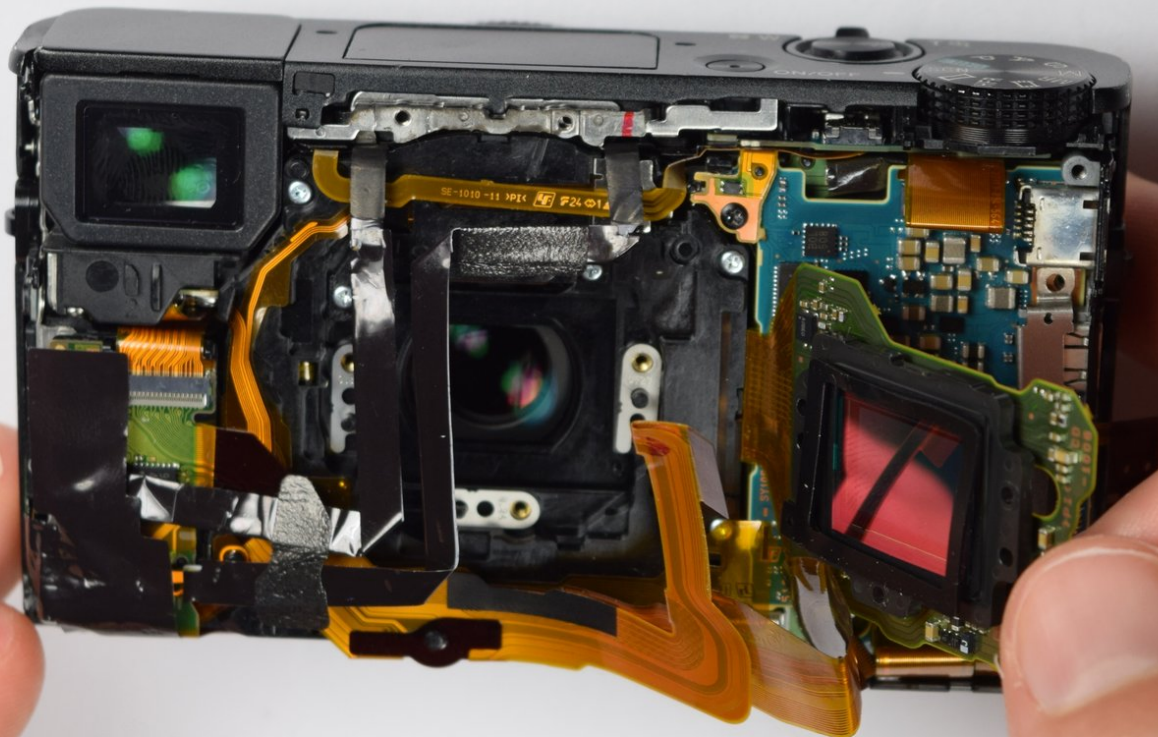




Sony DSC-RX100MA Image Sensor Replacement

This guide will show you how to replace the image sensor inside the camera.

Written By: Isaiah De Leon





TOOLS:

- [Phillips #0 Screwdriver](#) (1)
- [iFixit Opening Tools](#) (1)

Step 1 — Back Cover



- Remove battery by sliding the tab to open the cover

Step 2



- Using the screwdriver, remove all screws (black 2.5mm) from outermost layer of the assembly.

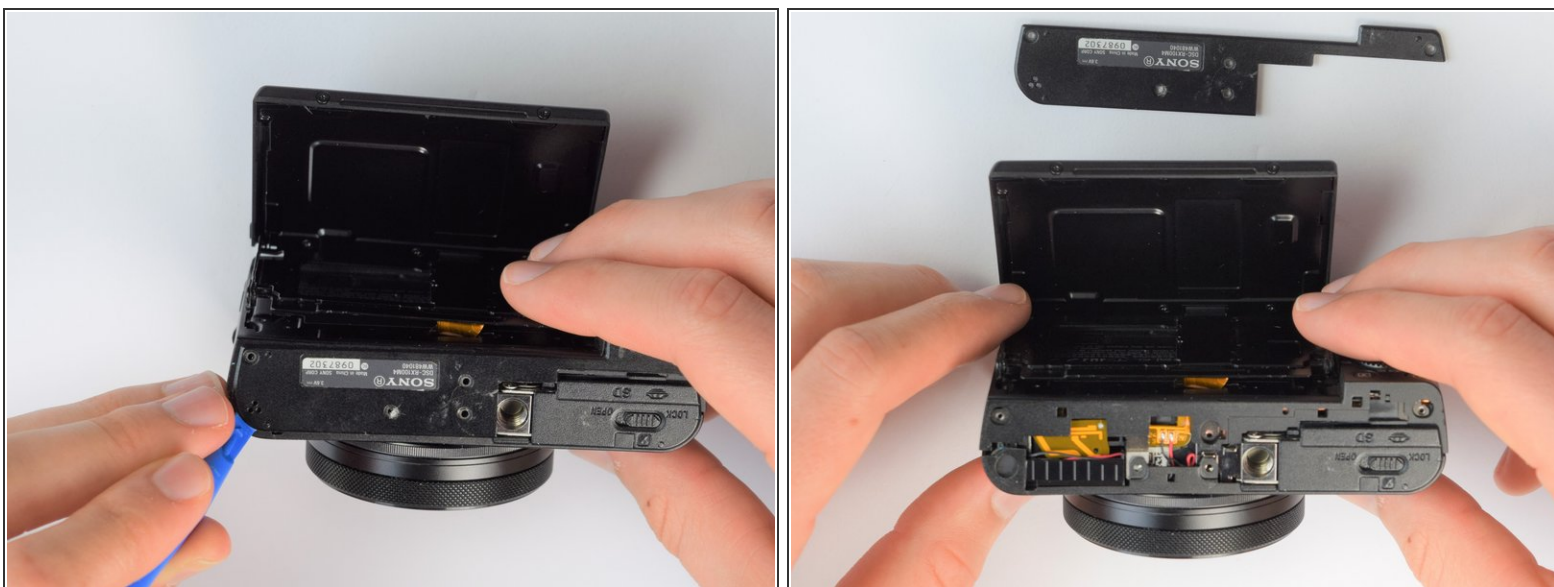
i All screws in the camera can be removed with the PH 0 driver head.

Step 3



- Also using the screwdriver, remove screws (black 1mm) underneath articulated LCD screen.
- Remove the marked 2.5 mm screws with the screwdriver

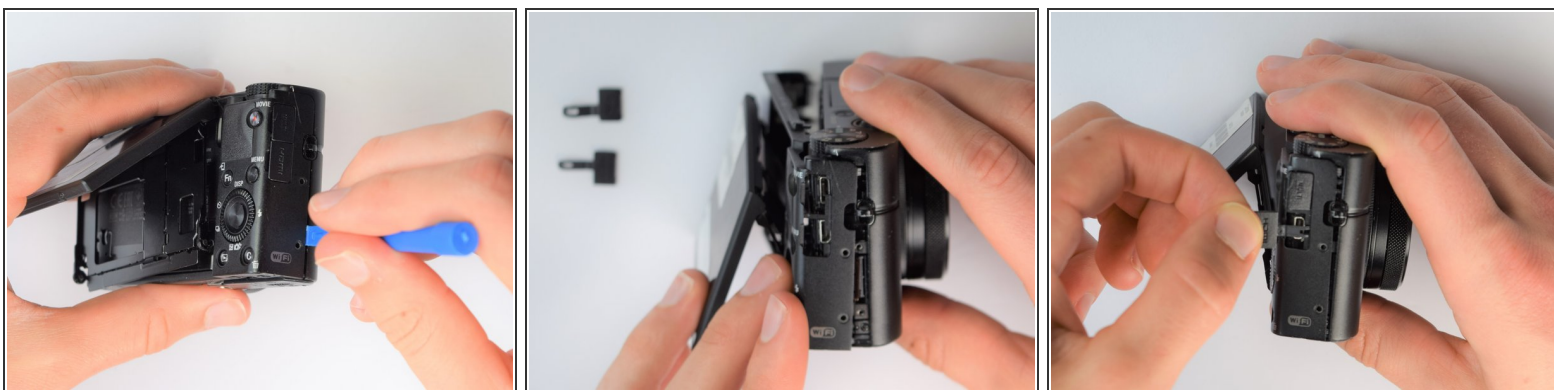
Step 4



- Using the plastic opening tools, carefully pry off the bottom plate.

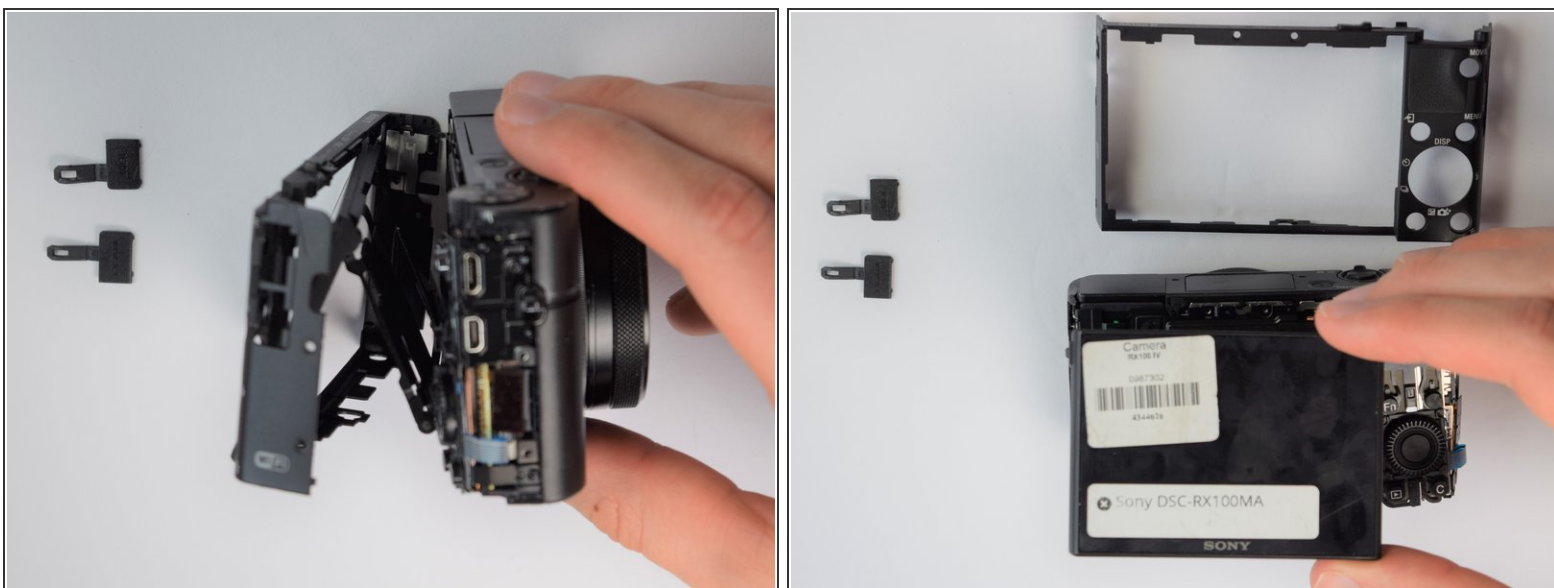
⚠ Do not pull too hard as you may break the plastic casing.

Step 5



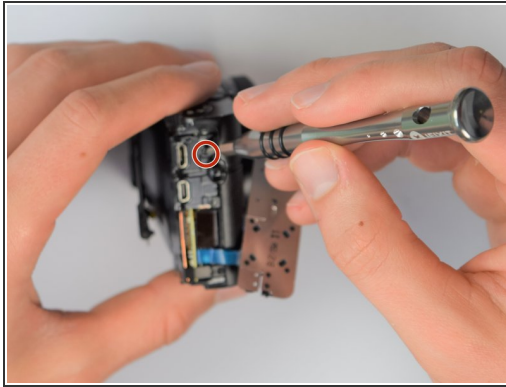
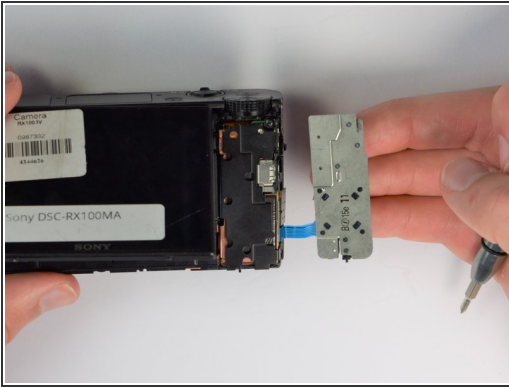
- Using the same plastic opening tools, separate the screen and back assembly from the front portion of the camera
- Once the back assembly is slightly detached, pull the media covers for the HDMI and Multimedia ports

Step 6



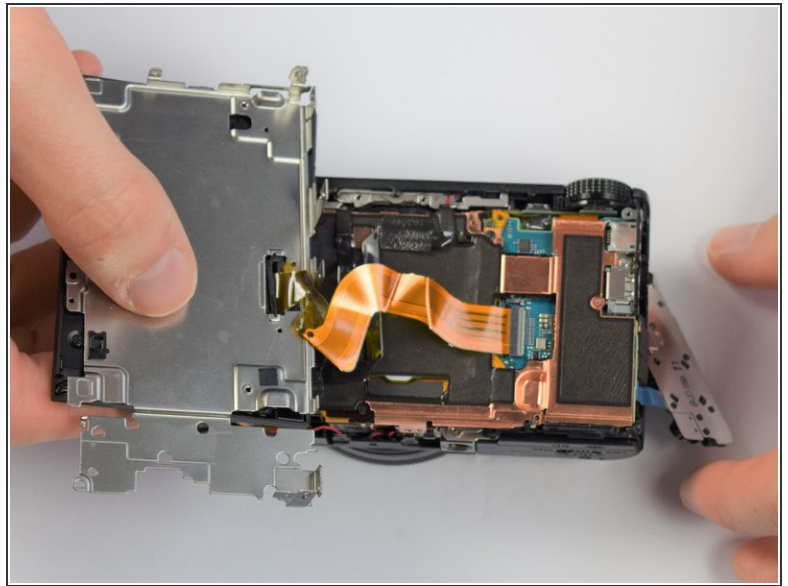
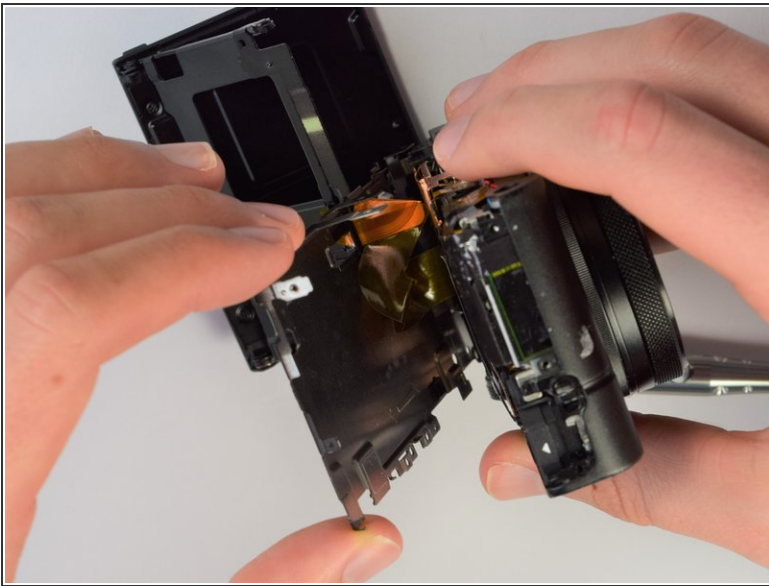
- Remove the back cover

Step 7 — Screen



- Move side panel to get access to screws
- Remove two screws (black 2.5mm) with PH #0 screwdriver

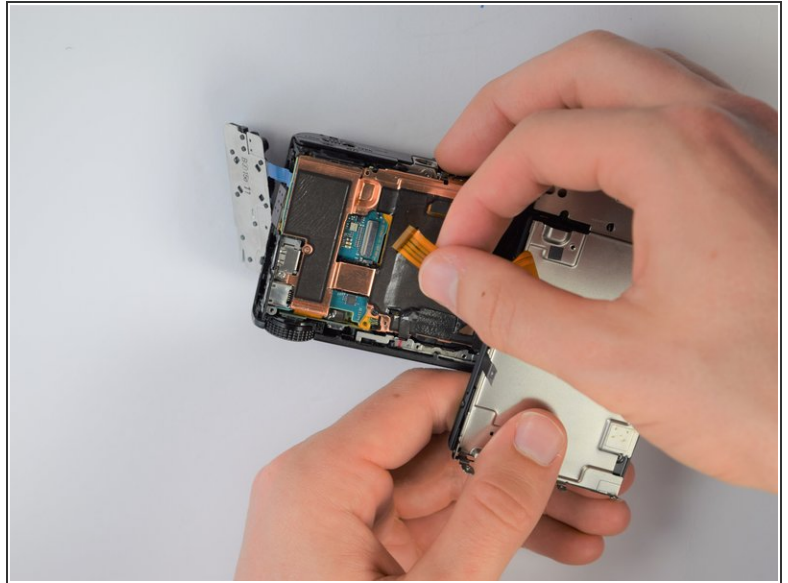
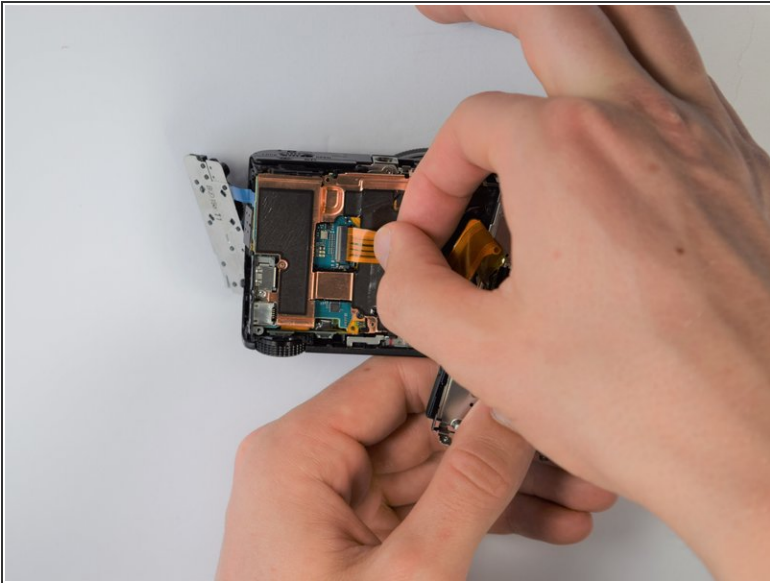
Step 8



- Remove back panel assembly while still keeping ribbon cable attached

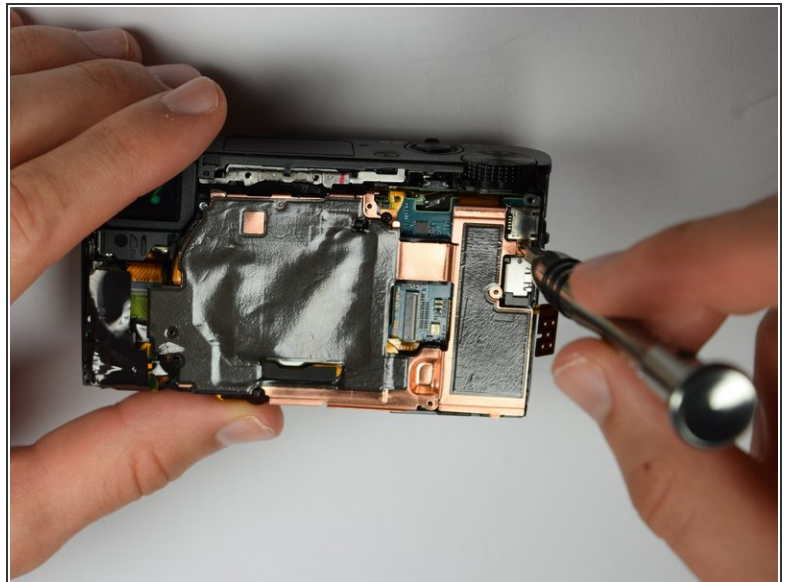
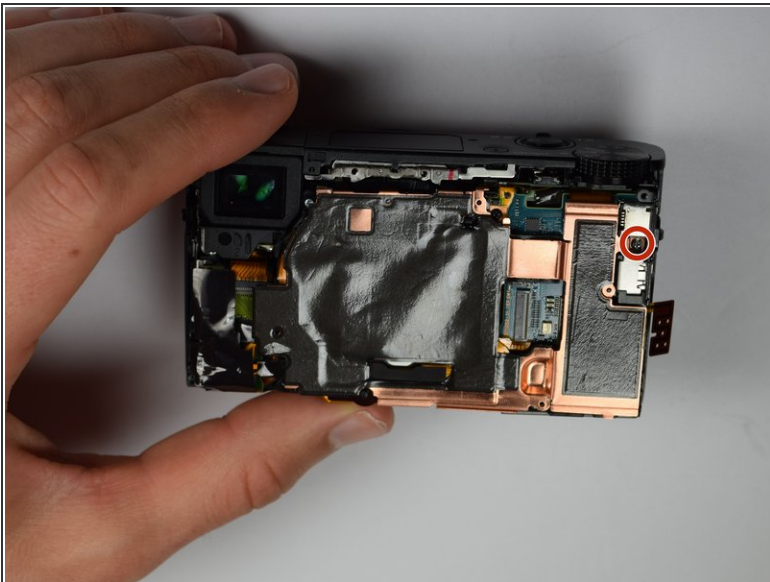
⚠ Be very gentle and care not to tear the gold ribbon cable. This will be a common theme throughout these replacement guides.

Step 9



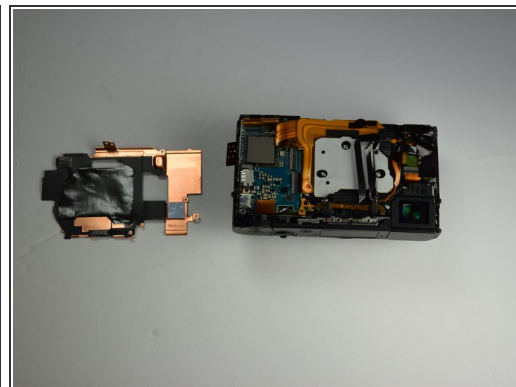
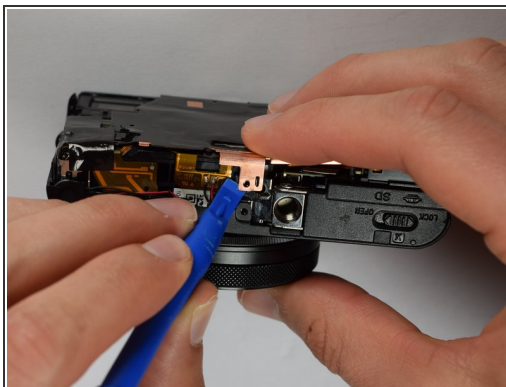
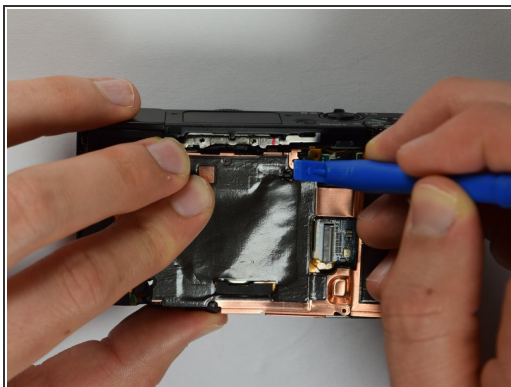
- Carefully unplug ribbon connector to fully detach LCD screen assembly from camera

Step 10 — Image Sensor



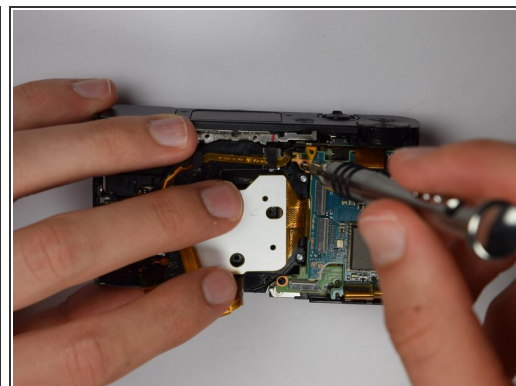
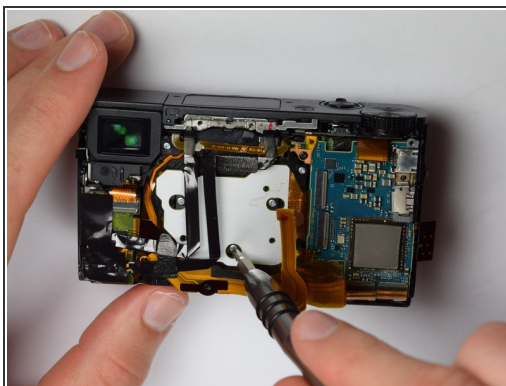
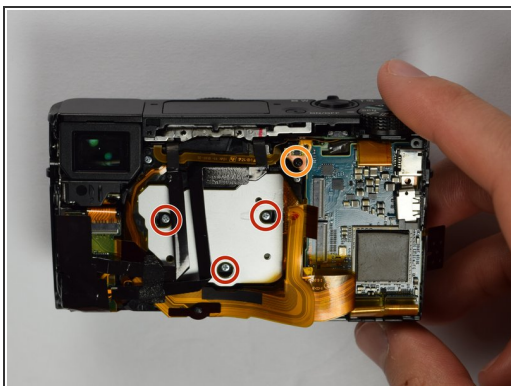
- Using the Philips Screwdriver, remove the screw (black 3mm) located on the copper casing.

Step 11



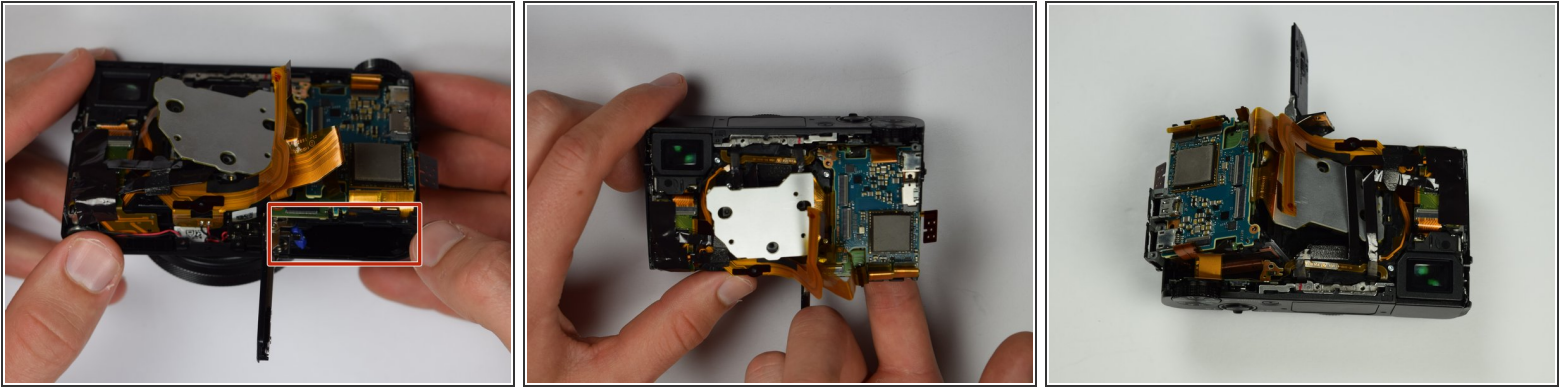
- Using the plastic opening tools, carefully pry off the copper casing at the two pictured points.
- Remove casing.

Step 12



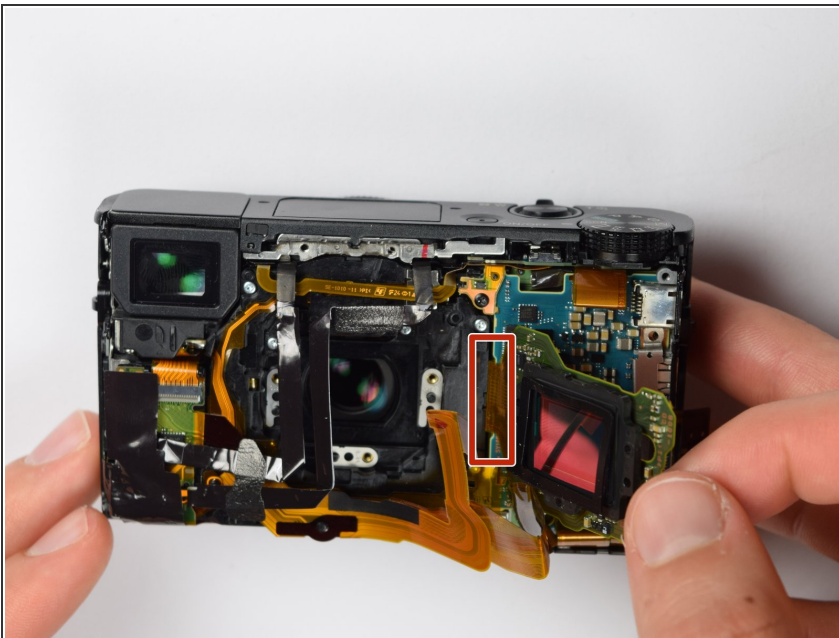
- Using the Philips screwdriver, remove the three (silver 3mm) screws
- Remove the screw (silver 2mm) from the upper right hand corner

Step 13



- Place your finger into the battery port and push up on the SD card holder to push it out of its socket.
- ⓘ Give it a little wiggle and you should feel the SD card holder come out.

Step 14



- Now you can remove the marked gold ribbon cable from the SD card holder.
- ⚠ Utilize extreme caution while removing because the ribbon cables are extremely fragile and important to the camera.

To reassemble your device, follow these instructions in reverse order.