



The Beatles Rock Band Drum Set Drum Pad Replacement

This guide will demonstrate how to replace the drum pads on the Rock Band Drum Set.

Written By: Zach Richter



INTRODUCTION

Before beginning the drum pad replacement. Remember to be careful when following the steps. The drum pads may seem difficult to pry off at first, but just remember that it is okay to apply more force if needed as long as its applied responsibly. Pay close attention to the specific wires and parts that are being emphasized in the steps.



TOOLS:

- [JIS Driver Set](#) (1)
-

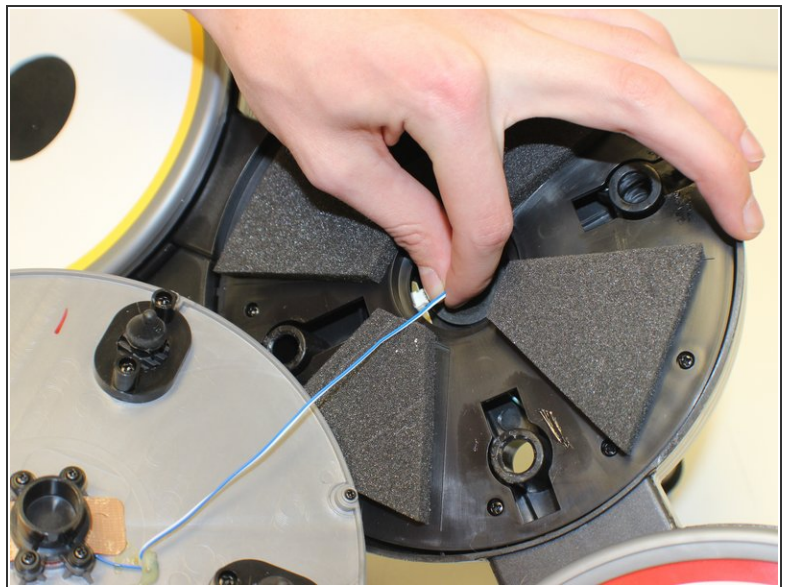
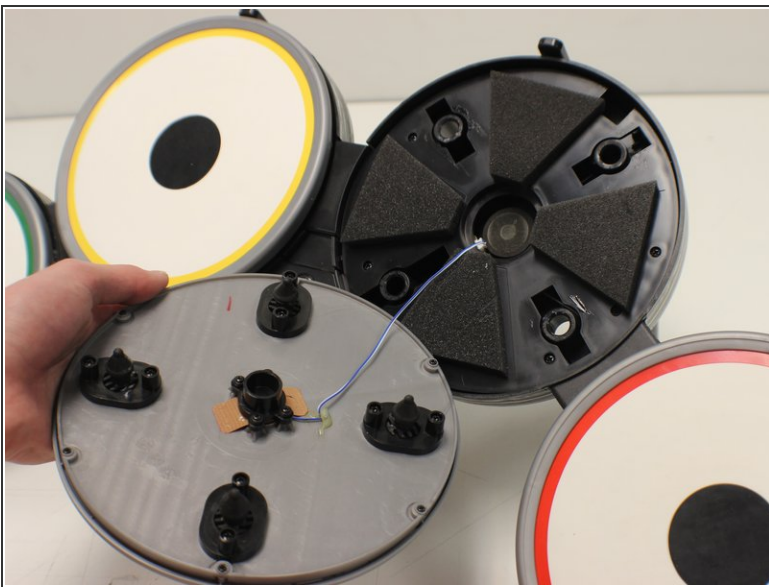
Step 1 — Drum Pad



- Pry the drum pad off of the drum set.

i This will take significant force, but the rubber on the drum pad can withstand the force.

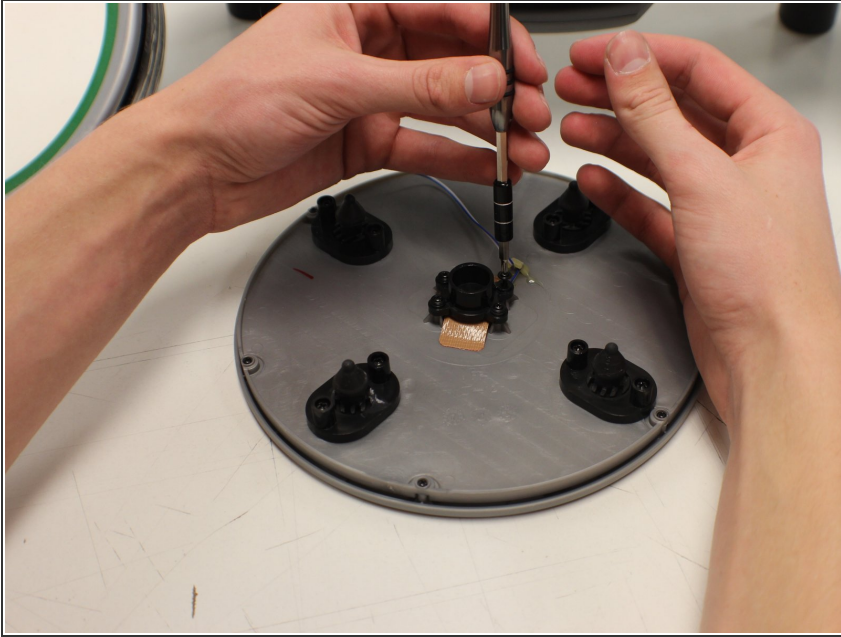
Step 2



- Remove the small wire clip shown in the picture.

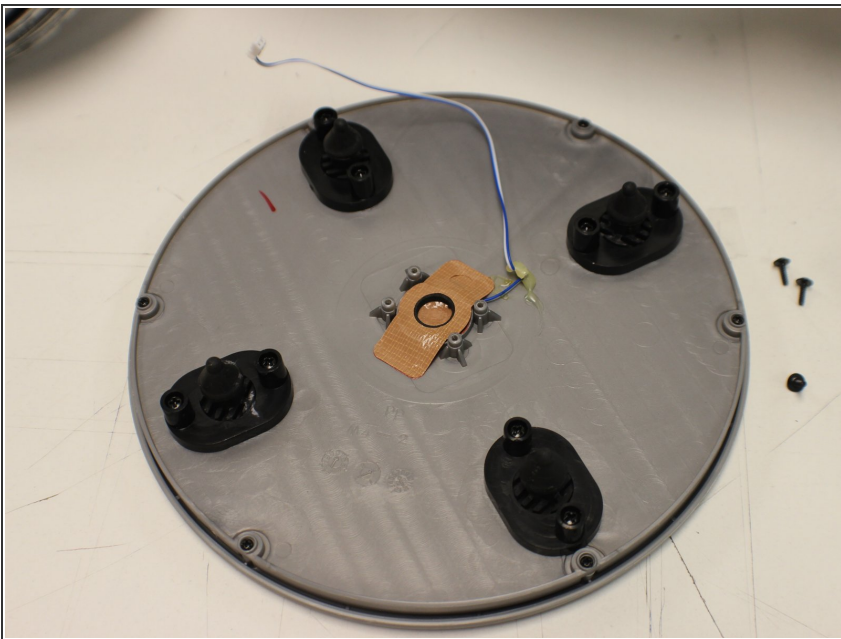
i If this wire is already disconnected, that is most likely the cause for the drum pad not working.

Step 3



- Remove the four Phillips size J0 screws supporting the hit sensor.
- ⓘ There is a small plastic disk and a spring in the support; be sure not to lose it.

Step 4



- The sensor can be peeled off of the drum pad.

To reassemble your device, follow these instructions in reverse order.