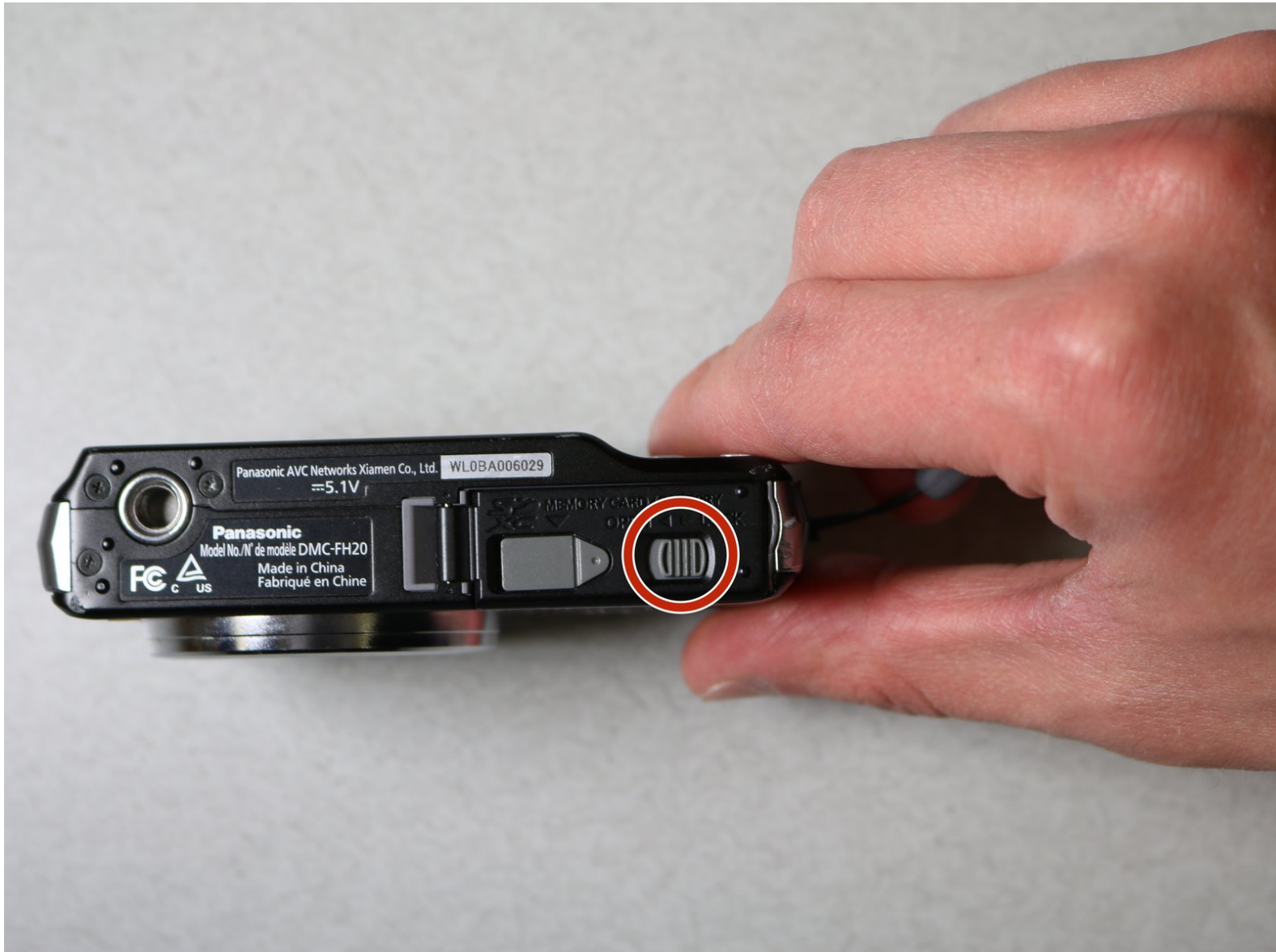




# Panasonic Lumix DMC-FH20 Memory Card Replacement

Replace your memory card if it's full or broken.

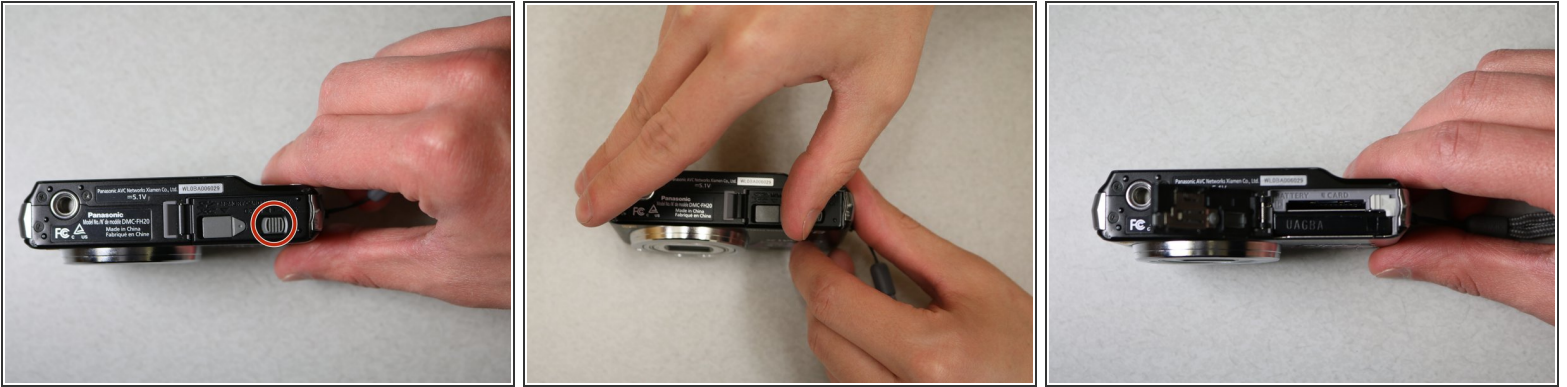
Written By: Arianna Boushell



## INTRODUCTION

In order to replace the memory card, you won't need any special tools. This repair might be necessary if your memory card is full or broken.

## Step 1 — Memory Card



- On the bottom of the camera, move the gray switch that has the words "open" and "lock" above it to the open position. The case will open.

## Step 2



- Once the case is open, you will see your memory card in the marked slot. Push the card down until you hear a small click. The card will then pop out and you will be able to remove it.

To reassemble your device, follow these instructions in reverse order.