



# Sony SRS-X3 Battery Charging Port Replacement

This guide will instruct how you on how to replace a faulty charging port on your device.

Written By: bradley



---

## INTRODUCTION

The guide will demonstrate the steps necessary to replace a bad battery charging port with a new one. The speaker will be disassembled from a fully assembled condition by following the necessary steps listed in this guide to replace the faulty charging port. For this repair guide only a Phillips screwdriver and the replacement board are necessary. This replacement is very straight forward and very simple for a beginner.



### TOOLS:

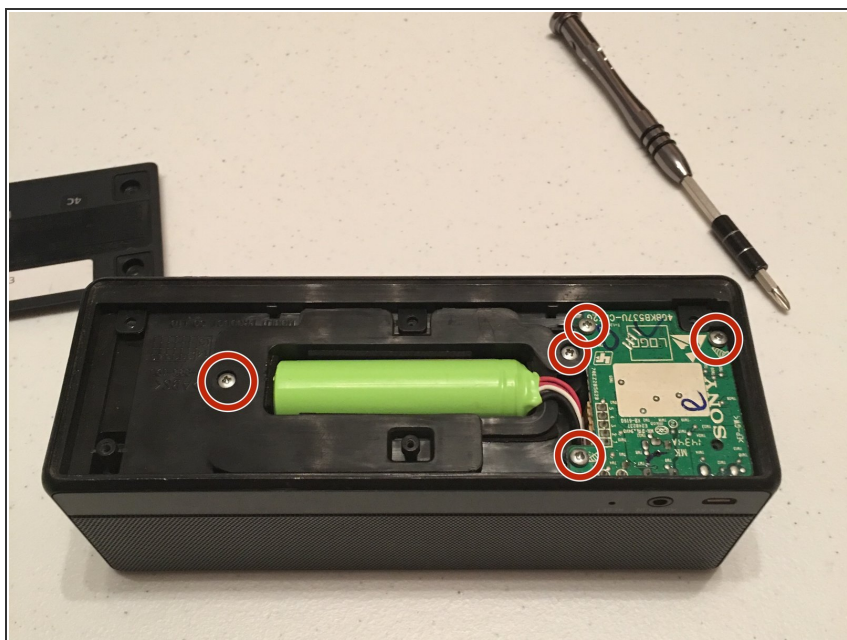
- [Phillips #1 Screwdriver](#) (1)
-

## Step 1 — Battery Charging Port



- Remove the 6 10mm Philips head screws shown, using a PH1 screwdriver

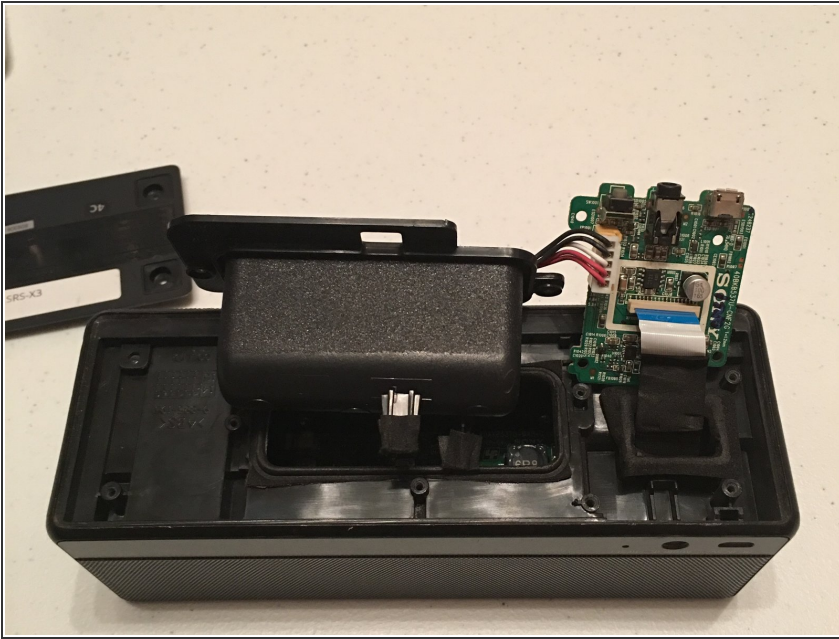
## Step 2



- Remove the 5 8mm Philips head screws shown. These are holding the battery and the green circuit board in.

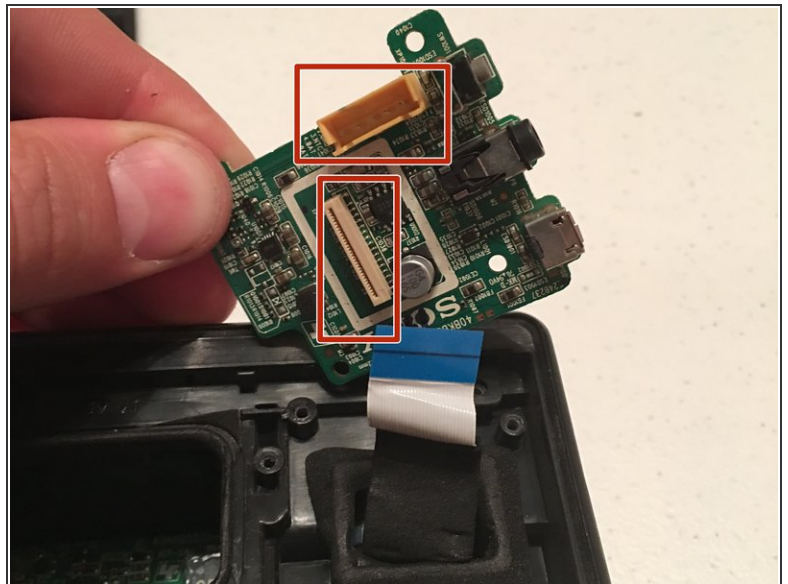
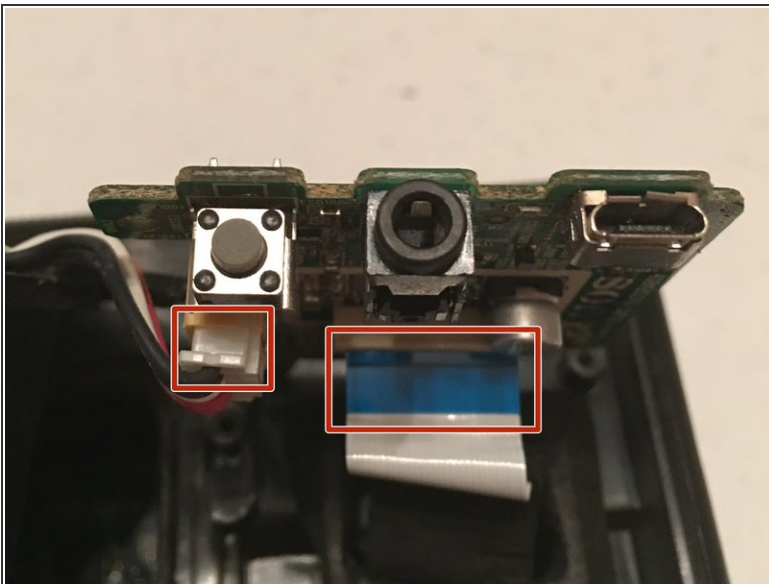


### Step 3



- Lift the battery pack and circuit board out of the housing and locate the wires and ribbon connector shown in the figure.

### Step 4



- Remove the ribbon connector and the connector from the battery pack (Note: These connectors are not easy to remove. Force may be necessary but the connectors are durable)
- After the connections are removed you are free to replace the circuit board.

To reassemble your device, follow these instructions in reverse order.