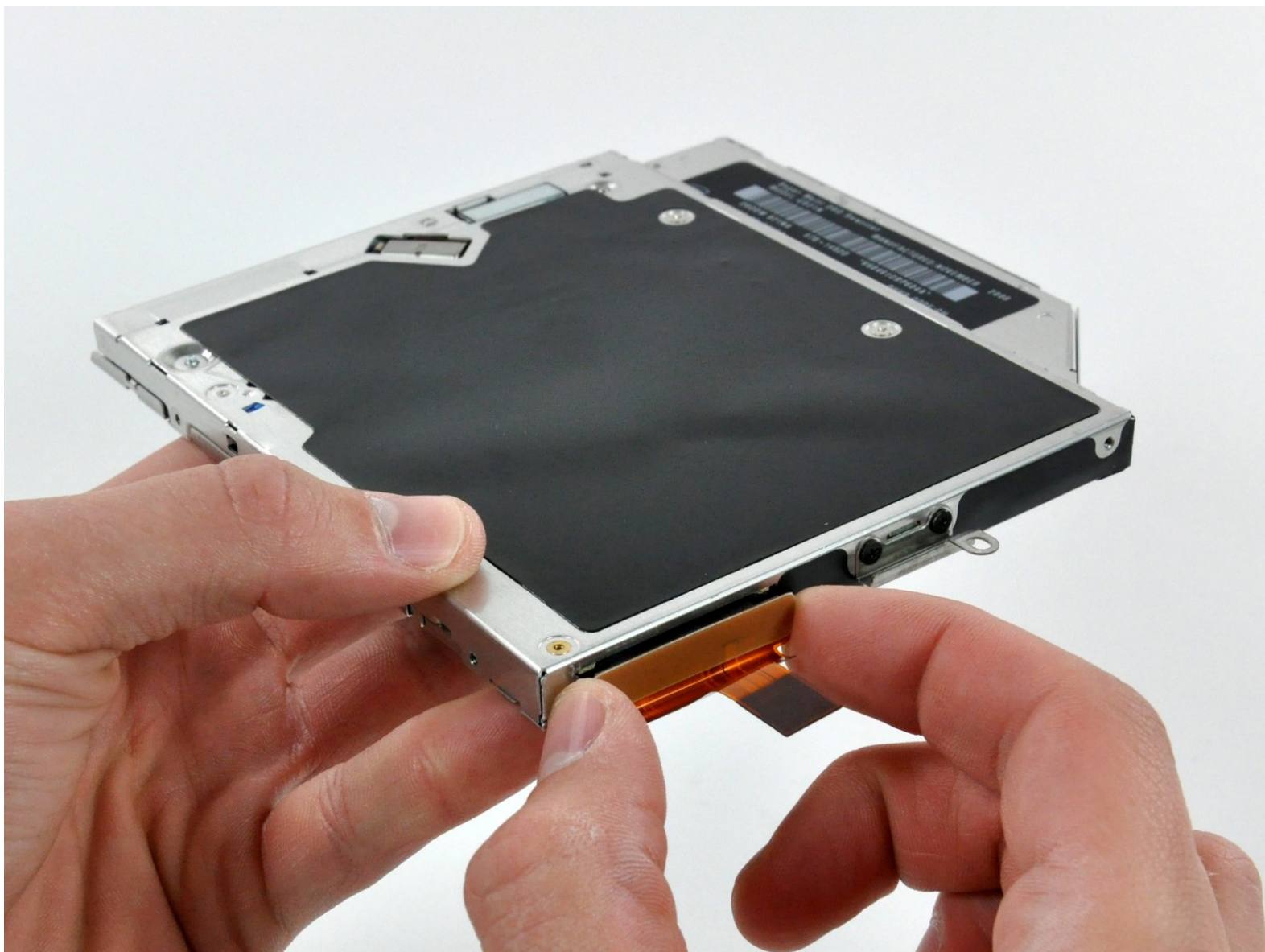




MacBook Pro 15" Unibody Late 2008 and Early 2009 Optical Drive Replacement

Replace the optical drive in your MacBook Pro 15" Unibody Late 2008 and Early 2009.

Written By: Walter Galan



INTRODUCTION

This guide will show you how to replace the SuperDrive from your laptop (requires a SATA SuperDrive).



TOOLS:

- [Phillips #00 Screwdriver](#) (1)
- [Spudger](#) (1)



PARTS:

- [MacBook Pro 15" Unibody \(Late 2008/Early 2009\) 8x SATA SuperDrive \(Used\)](#) (1)
- [Unibody Laptop Dual Drive](#) (1)
- [Unibody 8x SATA SuperDrive \(Pre-Mid 2009\)](#) (1)

Step 1 — Access Door



- With the case closed, place the Unibody top-side down on a flat surface.
- Depress the grooved side of the access door release latch enough to grab the free end. Lift the release latch until it is vertical.

Step 2



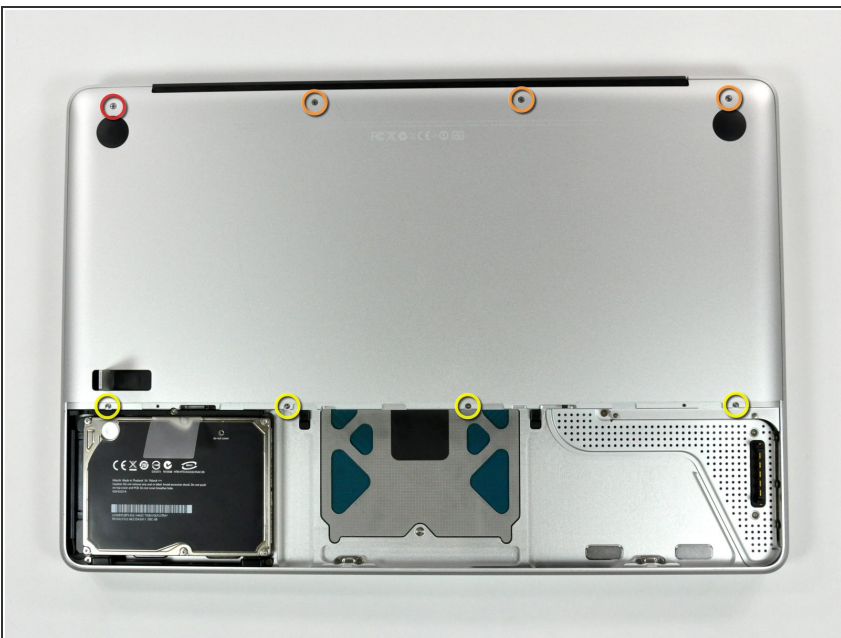
- The access door should now be raised enough to lift it up and out of the Unibody.

Step 3 — Battery



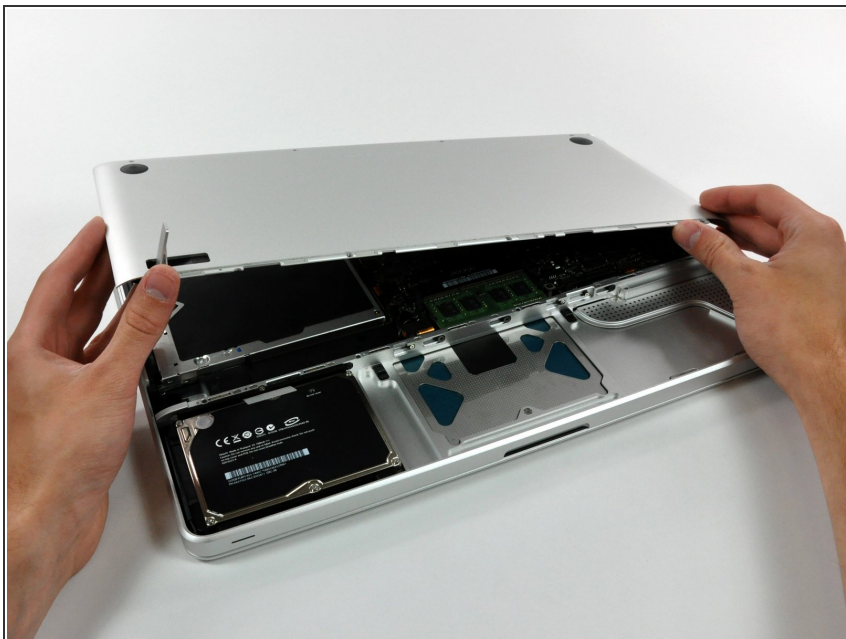
- **i** Be sure the access door release latch is vertical before proceeding.
- Grab the translucent plastic tab and pull the battery up and out of the Unibody.
- If the latch is depressed it will lock the battery in place.

Step 4 — Lower Case



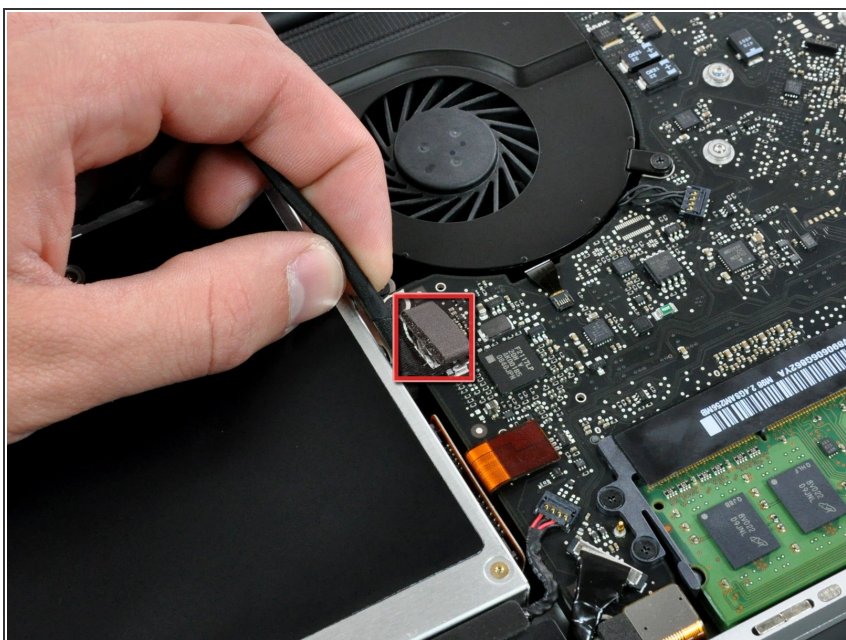
- Remove the following eight screws securing the lower case to the chassis:
 - One 5.4 mm Phillips screw.
 - Three 14 mm Phillips screws.
 - Four 3.5 mm Phillips screws.

Step 5



- Using both hands, lift and remove the lower case off the upper case.

Step 6 — Optical Drive



- Disconnect the camera cable by pulling the male end straight away from its socket.

Step 7



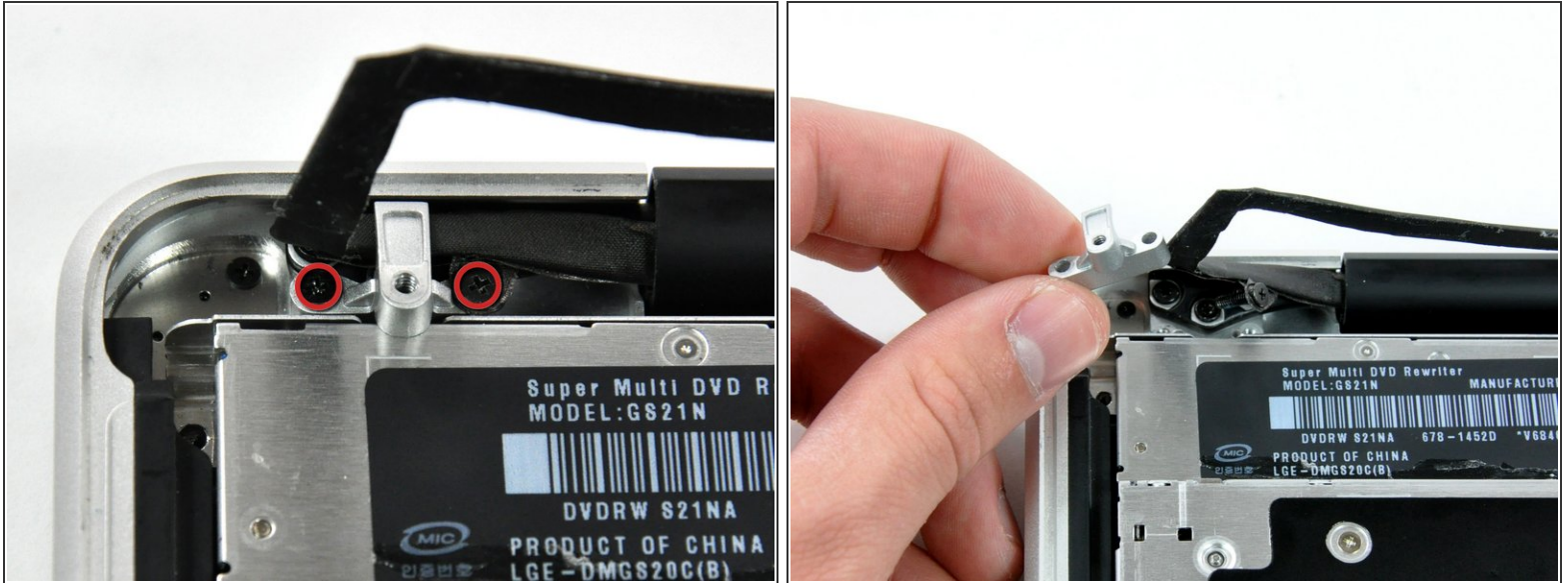
- Deroute the camera data cable from the channel in the optical drive.

Step 8



- Use a spudger to pry the optical drive connector straight up off the logic board.

Step 9



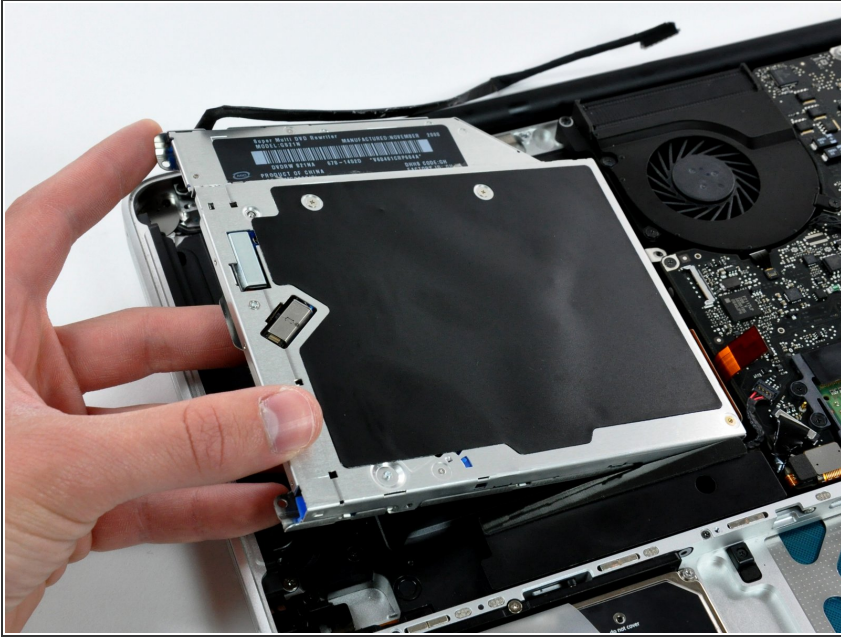
- Remove two 8 mm Phillips screws securing the camera cable bracket to the upper case.
- ⓘ The rightmost screw may remain captive in the camera cable.
- Lift the camera cable bracket out from the upper case.

Step 10



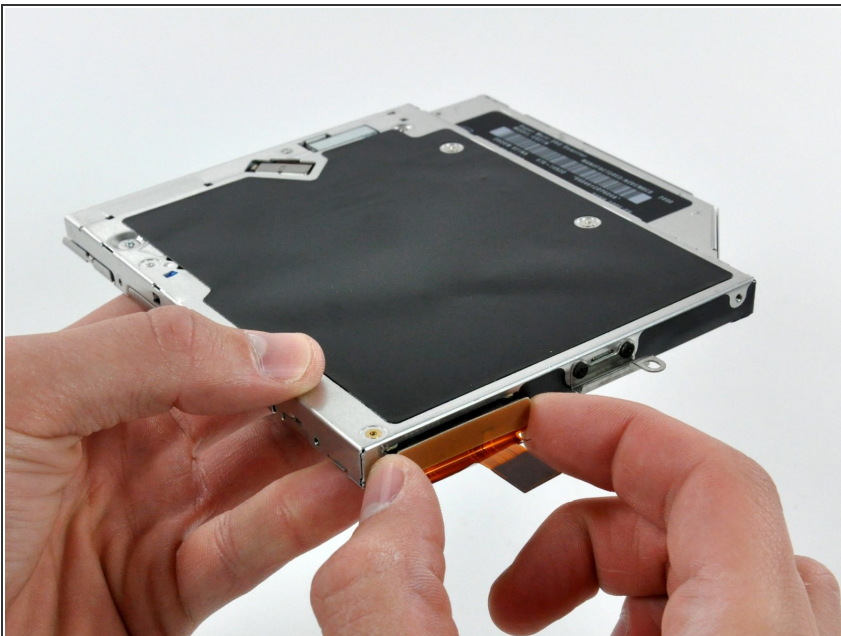
- Remove the following three Phillips screws securing the optical drive to the upper case:
 - One 3.5 mm Phillips screw.
 - Two 2.5 mm Phillips screws.

Step 11



- Lift the optical drive from its left edge and pull it out of the computer.

Step 12 — Optical Drive



- Remove the optical drive cable by pulling it straight away from the optical drive.
- ⓘ If you have a CD or any other object jammed in your optical drive, we have an [optical drive repair guide](#).

Step 13



- Remove the two black Phillips #0 screws securing the small metal mounting bracket. Transfer this bracket to your new optical drive or [hard drive enclosure](#).

To reassemble your device, follow these instructions in reverse order.