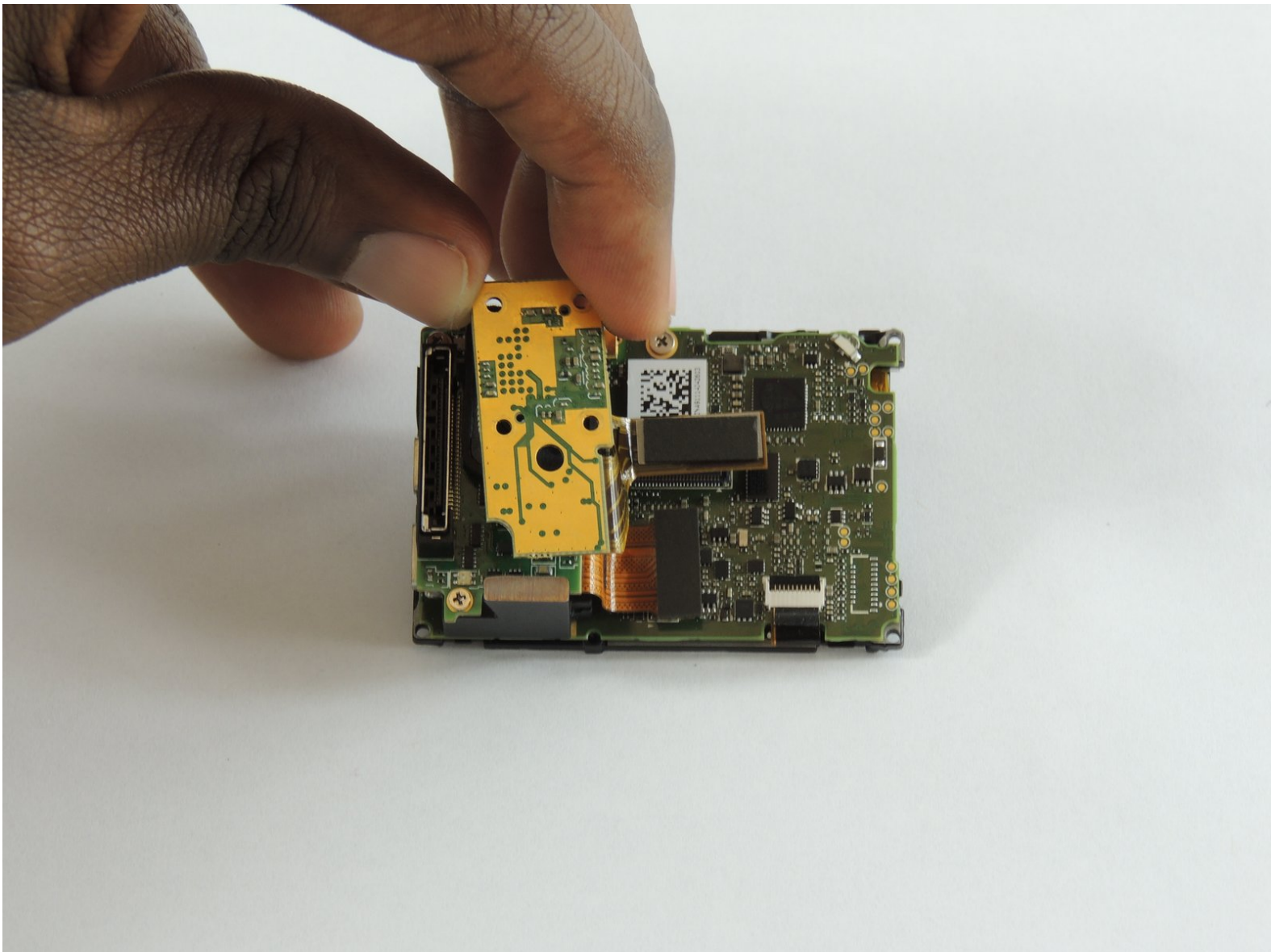




GoPro Hero4 Black Camera Sensor Replacement

A walk through the replacement of the camera sensor. If your pictures are blurry or low on brightness, the camera sensor may need a replacement.

Written By: Jeffrey Goethe



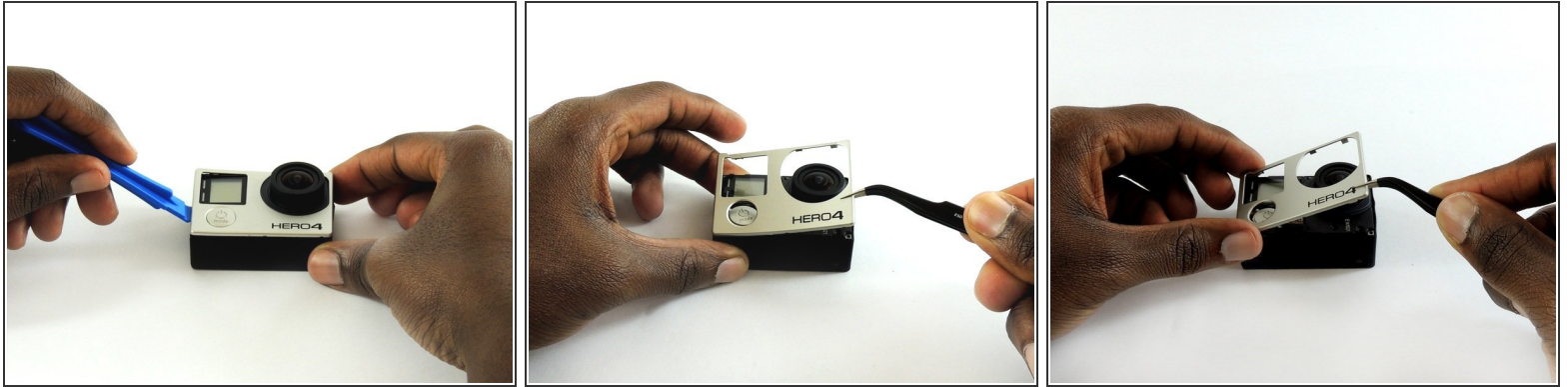
INTRODUCTION

This guide will show how to replace the camera sensor. The camera sensor collects light to create the image. If your pictures are blurry or low on brightness, the camera sensor may need a replacement.

TOOLS:

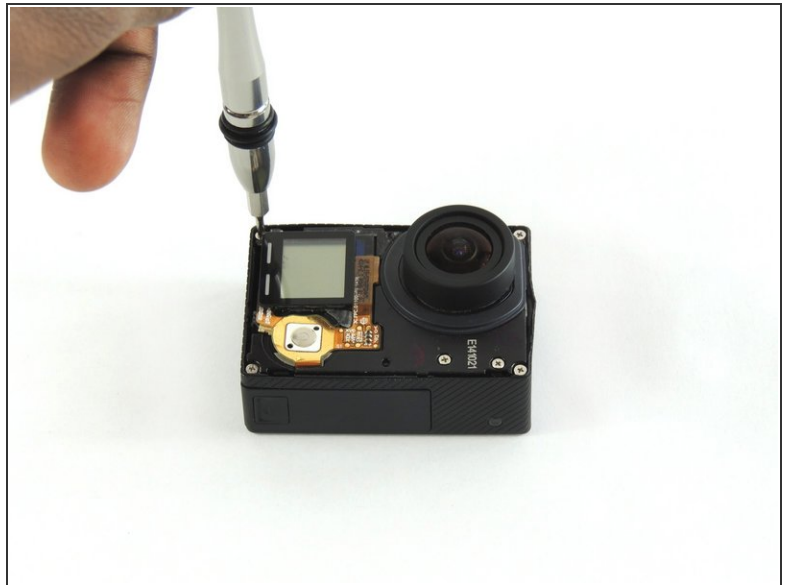
- [iFixit Opening Tools](#) (1)
 - [Phillips #00 Screwdriver](#) (1)
 - [Metal Spudger](#) (1)
-

Step 1 — Midframe Housing



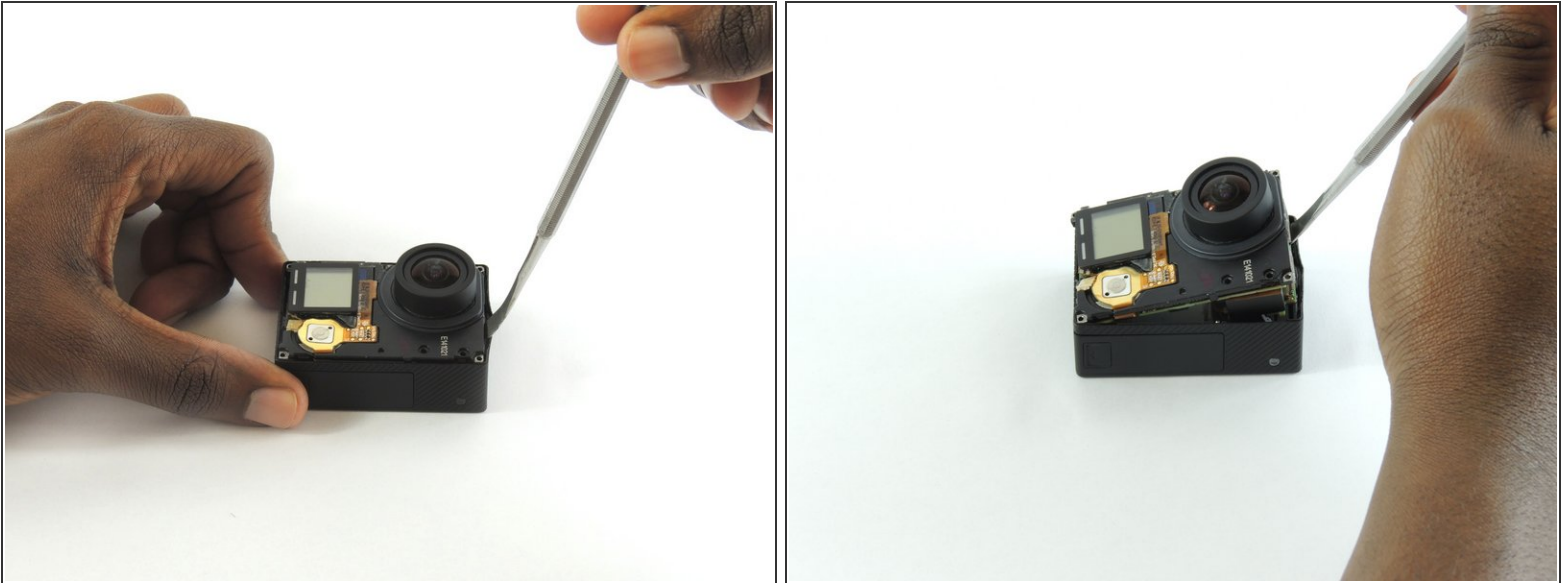
- Remove the faceplate by carefully prying around the edge using a plastic opening tool. Loosen the clips on the edge, then pull the faceplate off.
 - Use the tweezers to lift the faceplate from the rest of the device.
- ☒ The power button on the front of the GoPro may pop off. Ensure to align it properly during reassembly.

Step 2



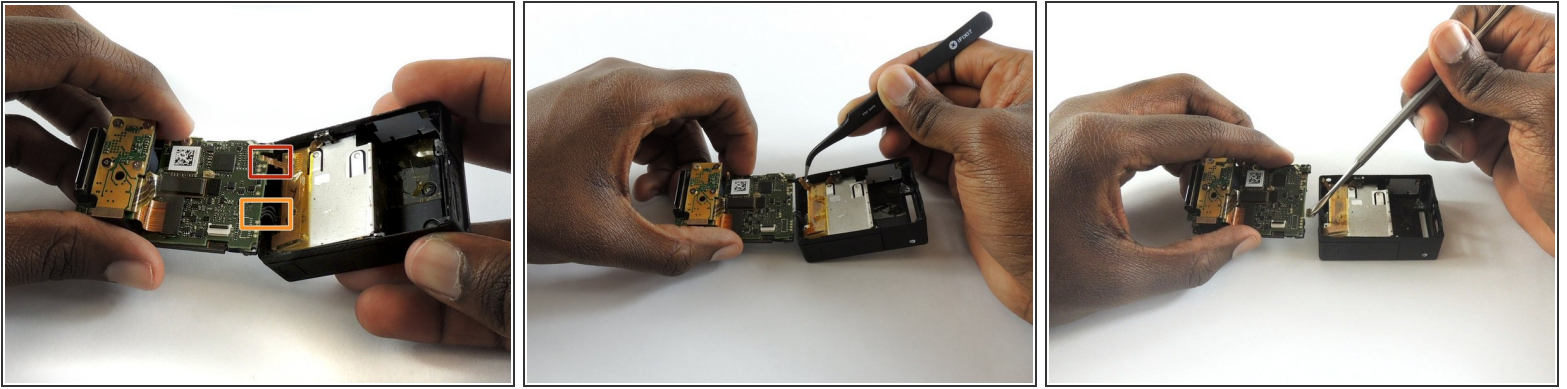
- Using a #00 Phillips head screwdriver, remove the following screws:
 - One 4.6 mm screw
 - Three 8.2 mm screws
 - Two 6.1 mm screws

Step 3



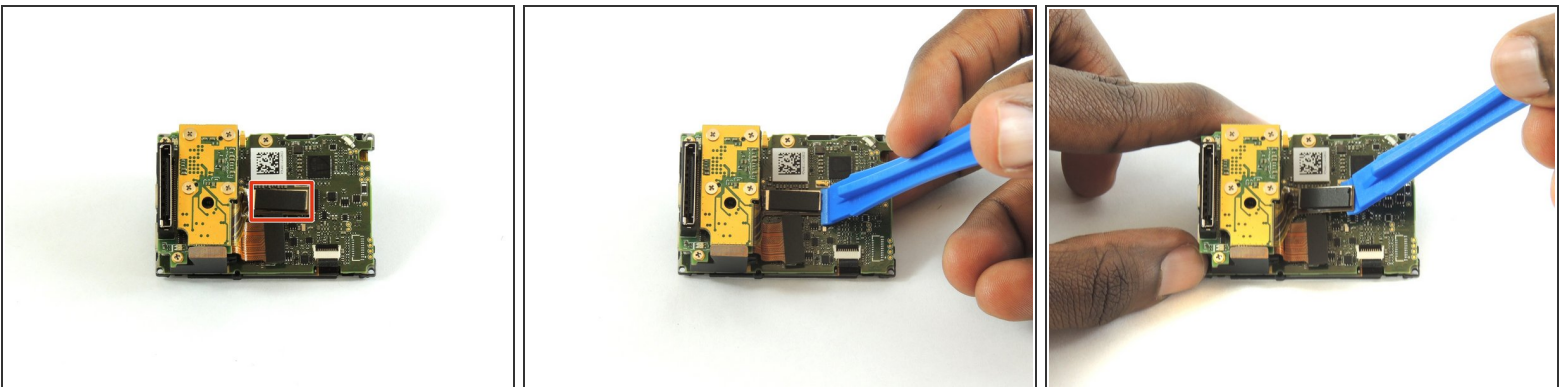
- Insert a metal spudger between the back plastic housing and the camera board assembly. Working around the edge to be careful of the inner components, carefully remove the camera.

Step 4



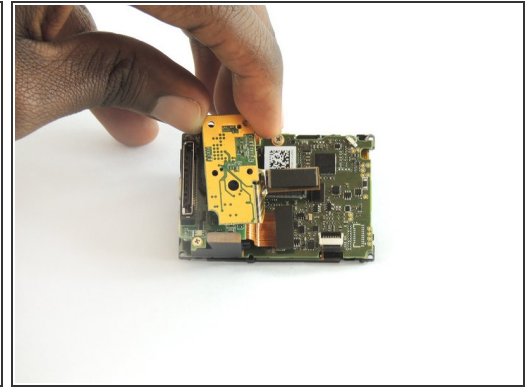
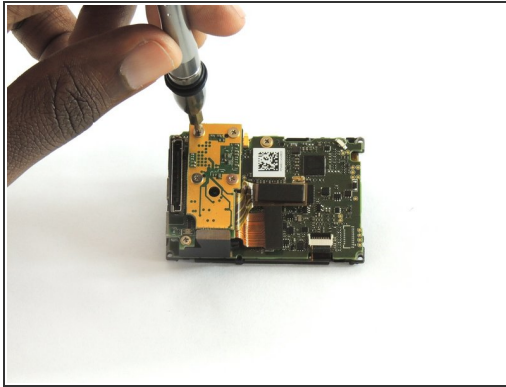
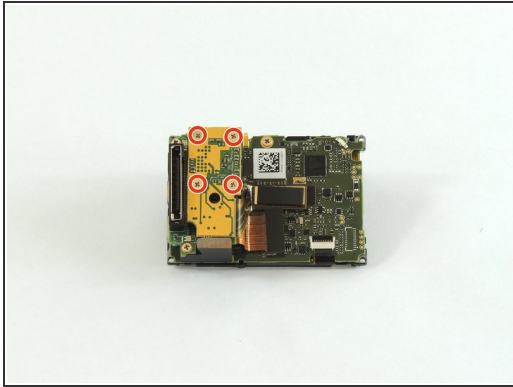
- Using tweezers, remove the ribbon strip by pulling on it. This will remove the connection.
 - Push down on the three wires with the metal spudger and the clip will disconnect from the motherboard.
- ⚠ The clip must be pulled **up and away** from the motherboard. Attempting to slide it out will damage the clip.
- 👉 During reassembly, remove the black tape on the ribbon cable, turn the camera upside down so you can see the port, and reinsert the cable with tweezers. It's a lot easier!

Step 5 — Camera Sensor



- Using a plastic opening tool, separate the camera sensor's connector from the motherboard.

Step 6



- Using a #00 Phillips head screwdriver, remove the four 3.0mm screws holding the camera sensor.

To reassemble your device, follow these instructions in reverse order.