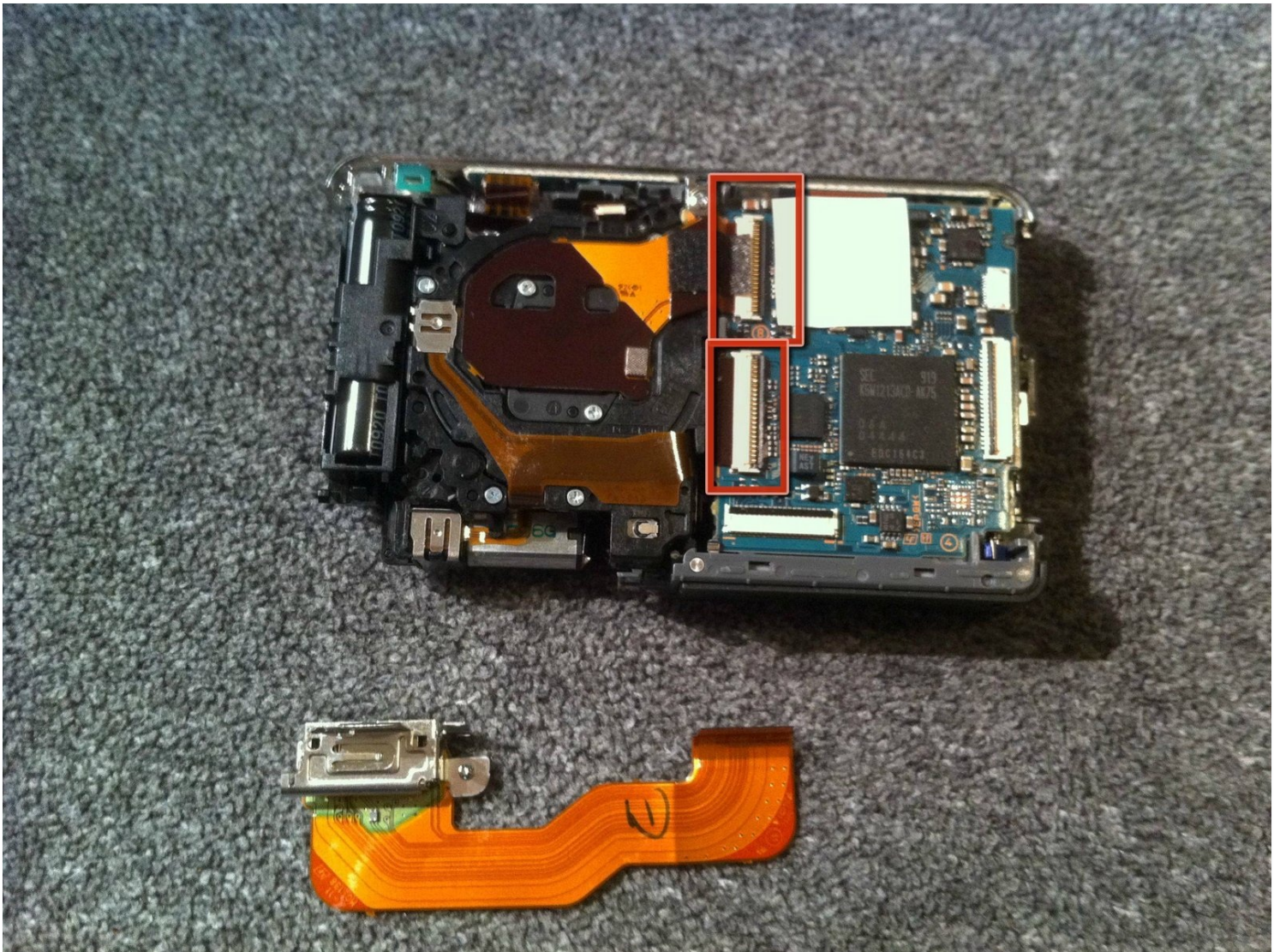




Disassembling Sony Cyber-shot DSC-W230 Removing the Camera Sensor

If the camera sensor is faulty it must be...

Written By: Steve Van Hall



INTRODUCTION

If the camera sensor is faulty it must be removed and replaced. This guide will detail the removal of the camera sensor from the camera/battery housing.

TOOLS:

[64 Bit Driver Kit](#) (1)

[iFixit Opening Tool](#) (1)

[Fingers](#) (1)

[Flathead 3/32" or 2.5 mm Screwdriver](#) (1)

Step 1 — Case



- Begin by placing the camera upside down and removing the three small center screws.
- ⓘ All screws are the same size and length and can be used interchangeably.

Step 2



- Turn the camera on its side (Counterclockwise). Remove the two small screws on either side of the silver panel.
- Turn the camera 180 degrees onto its other side and remove the two small screws on either side of the silver panel.

Step 3



- Locate the camera's tripod mount located on the bottom of the camera.
- Carefully remove the camera's tripod mount and place it aside.
- Be careful not to lose this piece.
- Rotate the silver panel labeled 4x clockwise.

Step 4 — Separating Camera and Display



- Align the camera so that the side with "4x Optical Zoom" is facing toward you.
- Gently twist the bottom corner clockwise until you feel the side panel unlock.
- Lift off the side panel and set aside.

Step 5



- Rotate the camera 180 degrees to face the side panel with the lanyard loop on it.
- Gently lift the panel vertically until it lifts off

⚠ Take care to not lose the small rectangular portion on the bottom of the panel.

Step 6

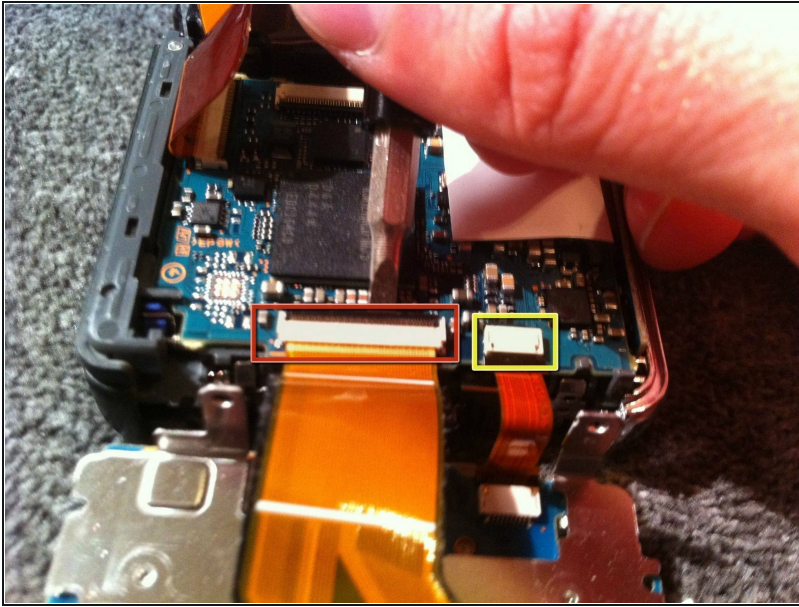


- Position the camera so the bottom is facing up and the display away from the surface.
- Gently pry the screen portion from the camera portion with your fingers or a plastic prybar.

⚠ Do not fully separate the two components! the screen is attached by two ribbon cables.

- Lay the display flat to expose the circuit board and the display control ribbon cables.

Step 7 — LCD Display Screen



- Using a flat head screw driver gently pry up the tab securing the ribbon cable from the display screen to the camera sensor and battery housing.
- Remove the ribbon cable connecting LCD display to camera sensor and battery housing
- Following the same procedure as above, uninstall the ribbon cable connecting the main camera controls to the camera sensor and battery housing

Step 8



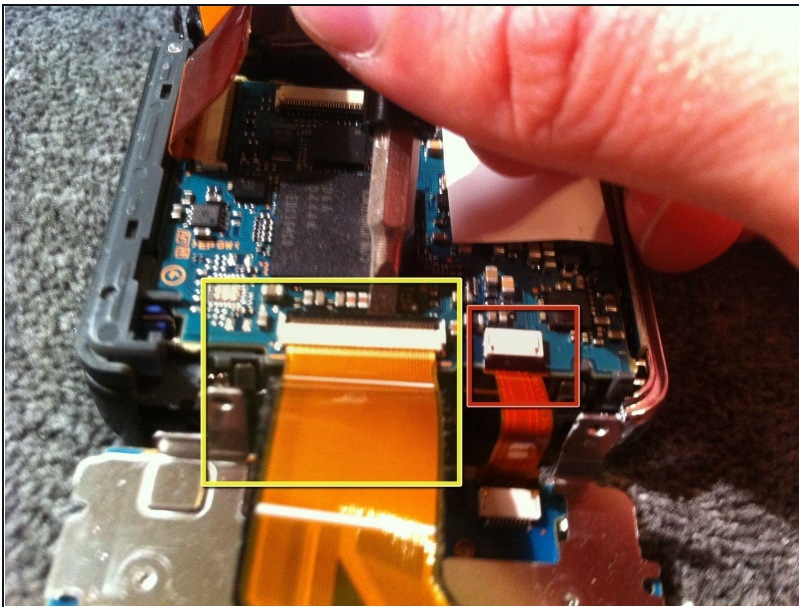
- The LCD display screen is now removed from the camera sensor and battery housing.
- The main camera controls are now removed from the camera sensor and battery housing.

Step 9



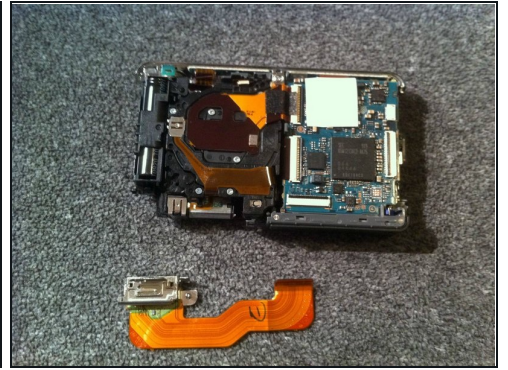
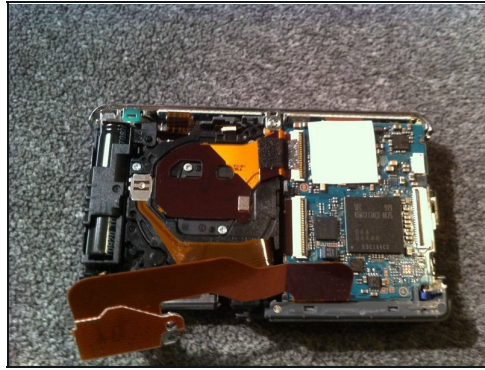
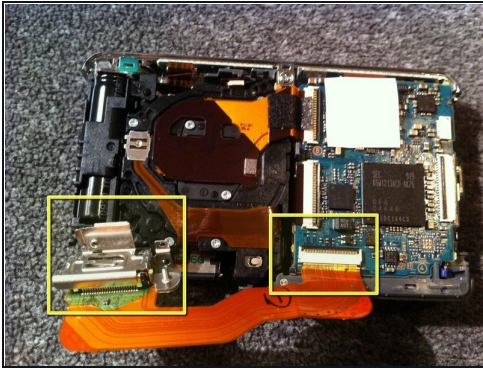
- Unsnap LCD display screen from its mount by unsnapping it from the display screen using your finger nail.
- Now the new LCD screen can be installed.

Step 10 — Ribbon Cable



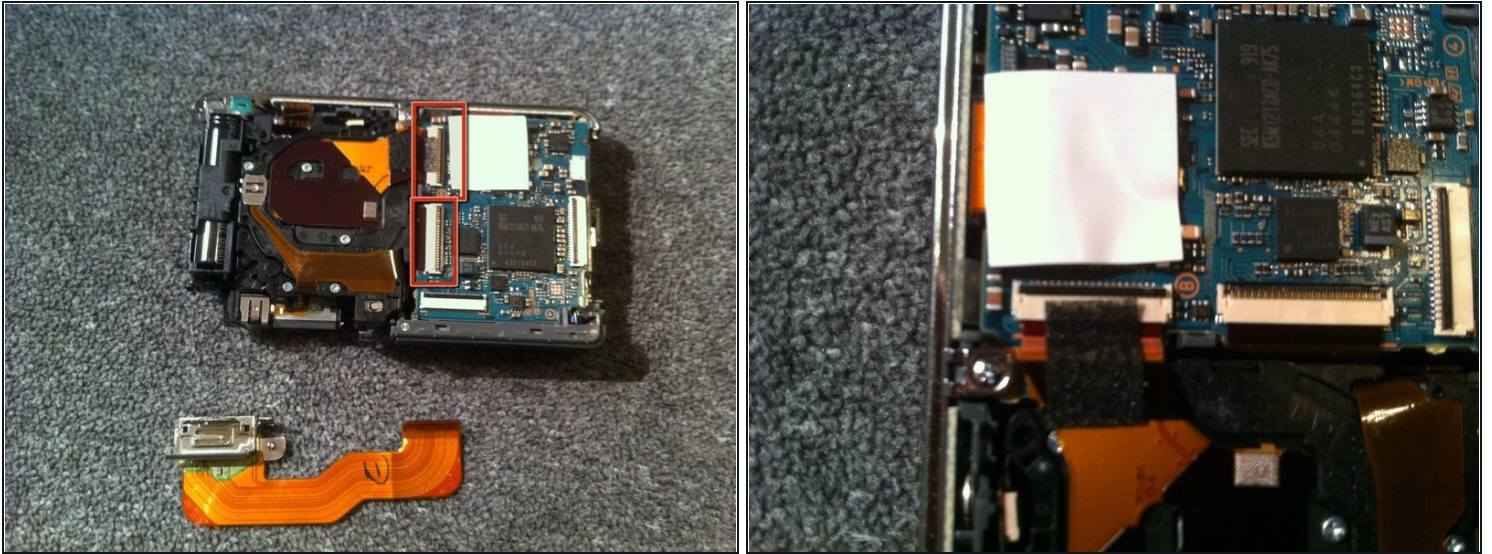
- Using a flat head screw driver gently pry up on the tab securing the larger ribbon cable which connects the display screen and camera sensor / battery housing.
- Remove the ribbon cable connecting the LCD display and camera sensor / battery housing.
- Following the same procedure, uninstall the ribbon cable connecting the main camera controls to the camera sensor and battery housing

Step 11



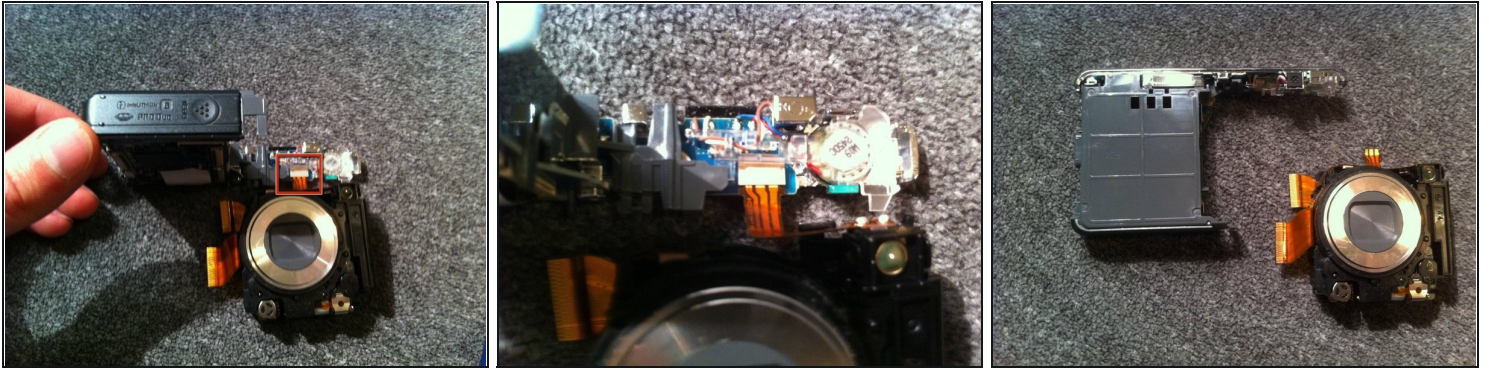
- Now turn your attention to the camera sensor and battery housing. Identify the two connection points of the large ribbon cable.
- Carefully place a flathead screwdriver under the left ribbon cable connection point and pull up to disconnect.
- Repeat the previous step but this time carefully remove the right ribbon cable connection point.
- After both sides of the ribbon cable have been disconnected it is ready to be replaced.

Step 12 — Disassembling Sony Cyber-shot DSC-W230 Removing the Camera Sensor



- After removal of the LCD screen and ribbon cable the camera sensor can be accessed.
- Position the camera with the circuit board facing up, showing the two ribbon cables connecting the camera sensor.
- Gently pry the black tabs on both cables until they are flipped up.
- Gently pull the ribbon cables until they slide out of the connectors.

Step 13



- Flip the camera over so the shutter is facing up and the top buttons are away from you.
- Making sure the ribbon cables are free, lift the battery housing up while keeping the camera sensor on the table, this will flip it up and provide access to the shutter button cable.
- Gently slide out the cable to free the camera sensor from the rest of the housing.

To reassemble your device, follow these instructions in reverse order.