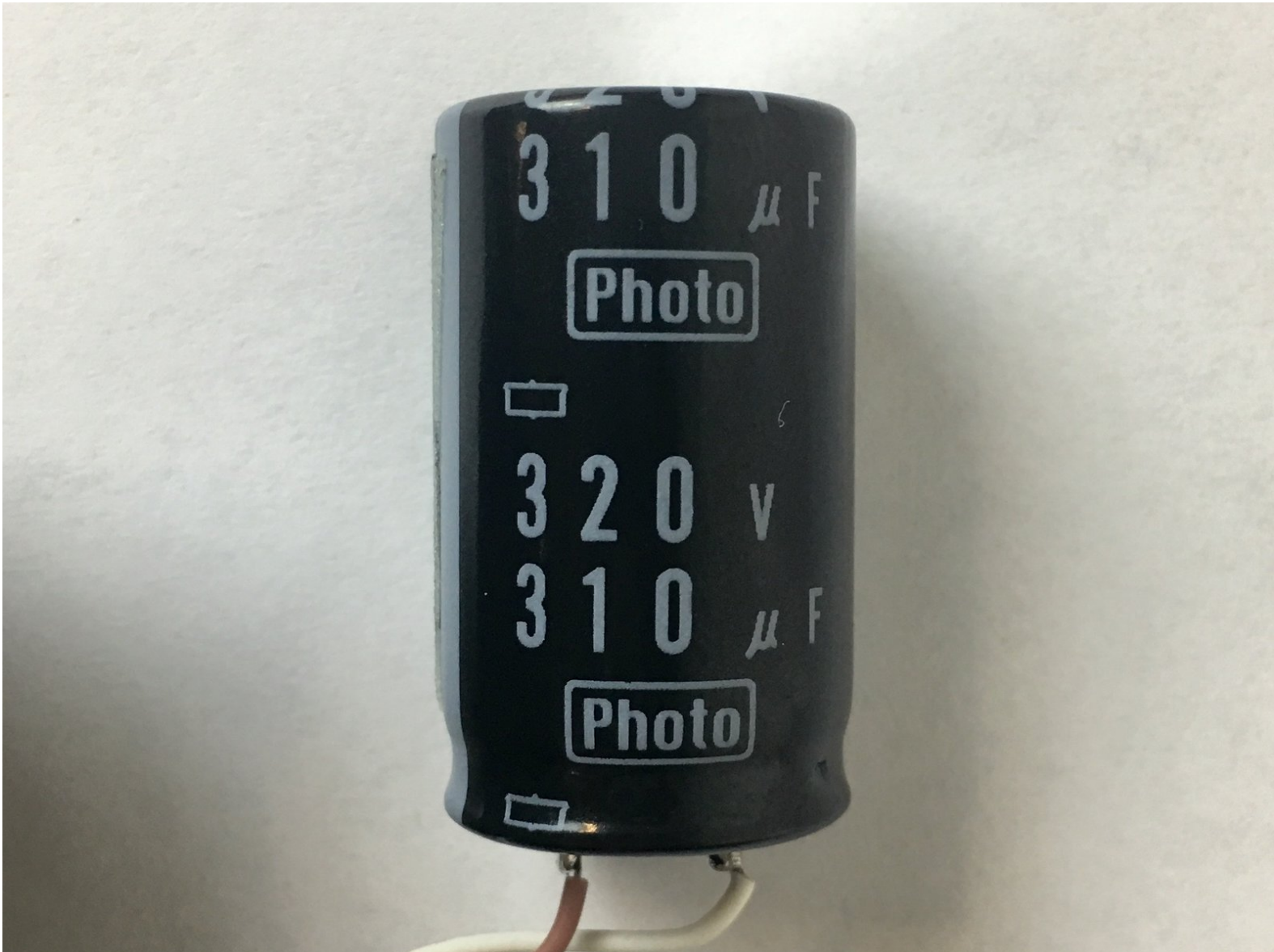




Instax Mini 90 Photo Flash Capacitor Replacement

This guide is for the replacement of the flash capacitor on the motherboard.

Written By: Elliott Tegan-Tawney



INTRODUCTION

If your pictures are turning out too dark because your flash is not working, you will need to replace the photo flash capacitor. For this guide, some soldering is required. You will need a soldering workstation and Phillips screwdrivers #00 and #000. While following this guide, you must ensure that you ground yourself with the wrist strap so that the motherboard is protected from static discharges. Take note that there is a risk of shocking yourself while performing this replacement.



TOOLS:

- [Phillips #000 Screwdriver](#) (1)
- [Heavy-Duty Spudger](#) (1)
- [Soldering Iron](#) (1)
- [Anti-Static Wrist Strap](#) (1)



PARTS:

- [310 \$\mu\$ F Photo Flash Capacitor](#) (1)
Contact Fujifilm for the replacement part.

Step 1 — Battery



- The battery compartment can be found on the backside of the camera. Pinpoint this compartment and focus on the right edge of the compartment gate to find the opening latch.

Step 2



- Pinch the latch in towards the battery compartment gate. This will release the gate and allow it to open.
- Completely open the gate and remove from camera. Take out the battery and replace the gate.

Step 3 — Photo Flash Capacitor



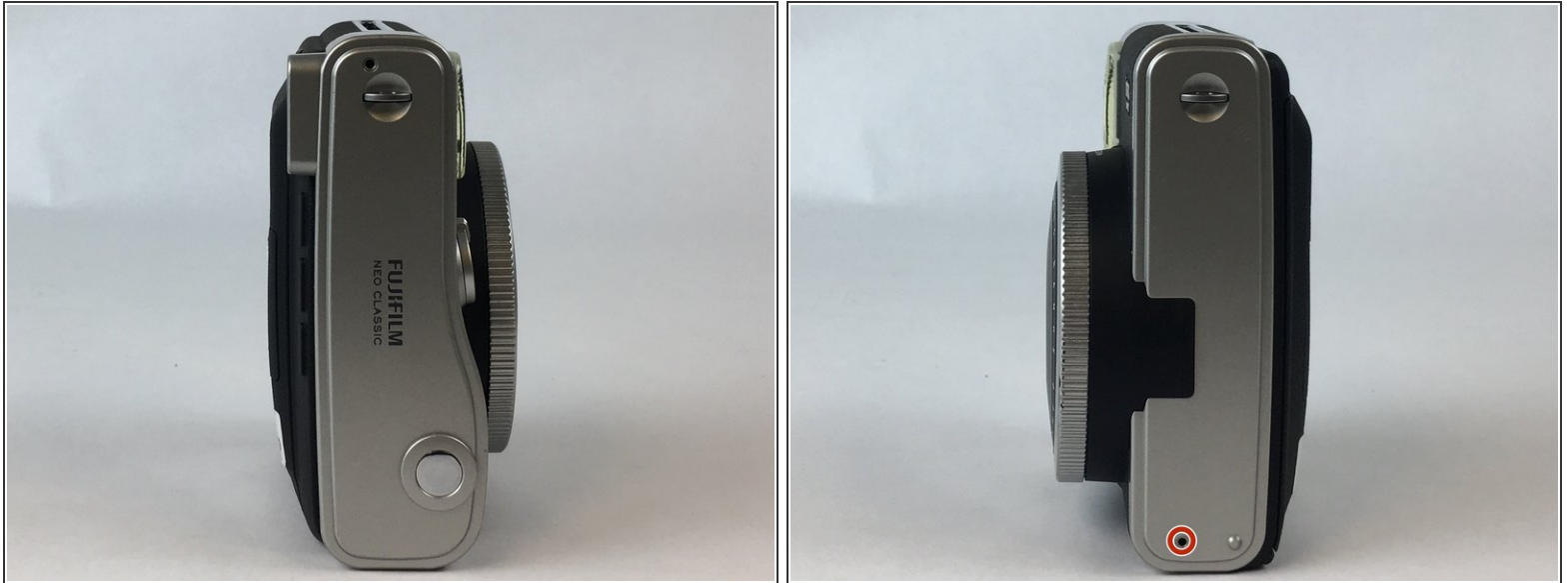
- Face the front side of the camera towards you. To locate the left side turn the left side of the camera towards you.
- Take out the four screws, sized 4.75 mm, with the Phillips #000 screwdriver.

Step 4



- Looking at the left side, flip the top of the camera towards you to locate the top side of the camera.
- Take out the screw, sized 9.75 mm, located on the top side, with a Phillips #000 screwdriver.

Step 5



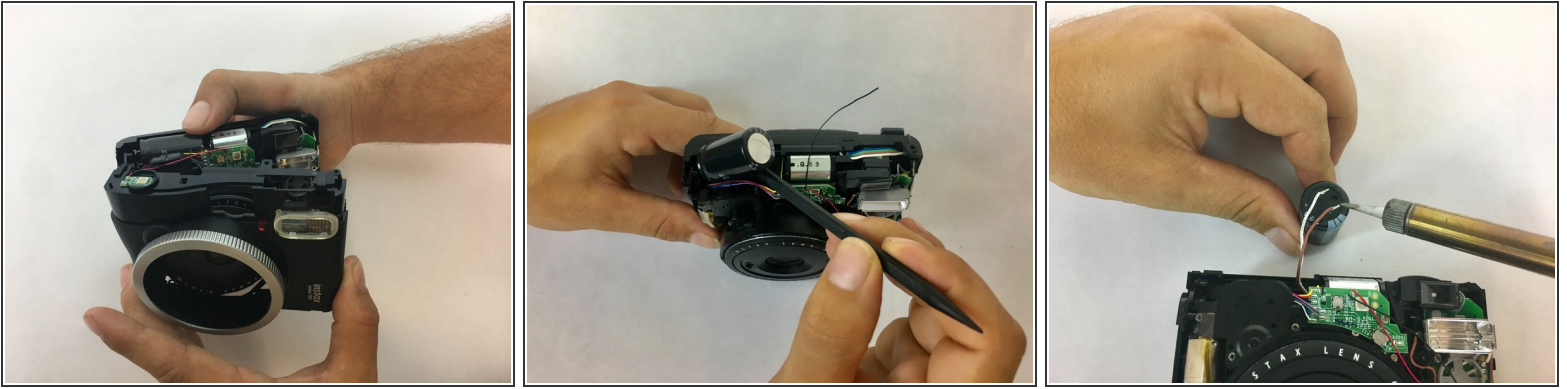
- Looking at the top of the camera, flip the camera 180 degrees to locate the bottom side of the camera.
- Take out the screw, sized 3.75 mm, located on the bottom side, this time with a Phillips #00 screwdriver.

Step 6




- Remove the anchors that hold the strap to the body of the camera. There is one on top, and one on the bottom.
- Use the black spudger to pry off the silver casing on the top and the bottom of the camera.
- Remove the metal piece from which the film is ejected located on the right side of the camera. There is a 4.75 mm screw under the metal piece. Use a Phillips #000 screw driver to remove it.

Step 7



- Open up the camera by releasing the latches on the top of the camera. Pry open the top half of the camera to reveal the capacitor. Locate the capacitor on the top left of the camera.

 Before handling the capacitor, be sure to discharge it. See the [Device Safety wiki](#) for more information.

- Use the black spudger to pry out the capacitor.
- Desolder the brown and white wires, taking note of which goes where.
- Solder the brown and white wires onto the new capacitor.

To reassemble your device, follow these instructions in reverse order.