



JBL Xtreme Battery Replacement

This Guide will help you replace the battery...

Written By: Sylvain Bazile



INTRODUCTION

This Guide will help you replace the battery inside a JBL Xtreme Bluetooth Speaker.



TOOLS:

Phillips #1 Screwdriver (1)
Magnetic Project Mat (1)
Metal Spudger (1)



PARTS:

JBL Xtreme Battery (1)

Step 1 — Cover



- Locate the seams next to the 'feet' on the bottom side of the device.

Step 2



- Use the metal spudger to gently pry and lift the edge of the seam. The cover is held in place with plastic snaps that will make a popping noise when disengaged. !!Start with the back half, this will expose TWO Screws that need to be removed before lifting the front half.

Step 3



- For the first part of the case: gently pull back the edges of the case rotating along the hinge opposite the opening seam illustrated in the second photo. Plastic snaps hold the cover in place.
- For the second part of the case: there are 2 screws to be removed at the seam. Once removed, the case will come off completely without forcing.

Step 4 — Bass Radiator



- Unscrew the six 9.75mm Phillips head screws holding the bass radiator in place.
- ⓘ Three of the five outer screws are indicated in the first image and the sixth inner screw is indicated in the second image.

Step 5



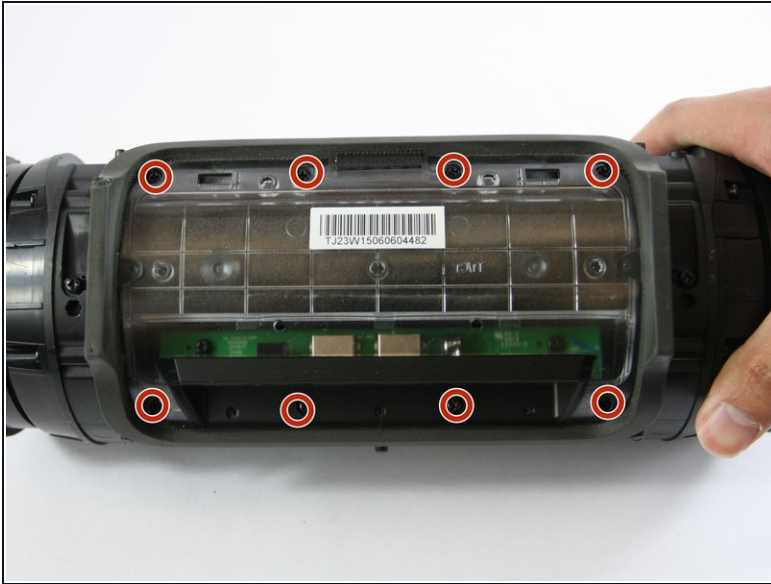
- Once the screws have been removed, the bass radiator will easily lift free.
- ❗ Both radiators are identical. Repeat the above steps on the opposite radiator if necessary.

Step 6 — Battery



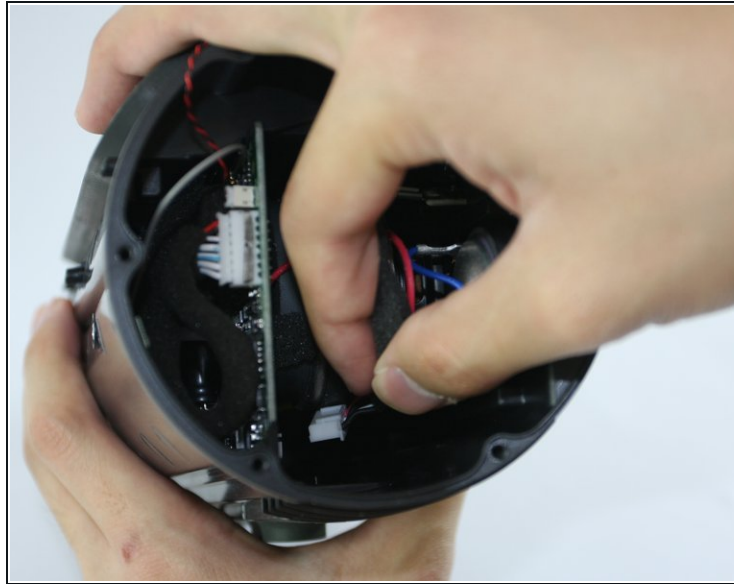
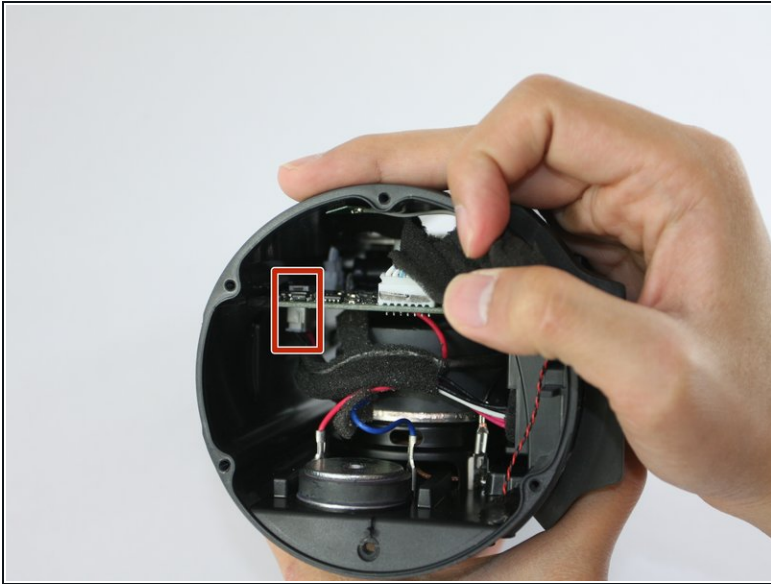
- Locate the three 9.7mm Phillips head screws inside the zipper compartment and unscrew them.
- Lift the zipper panel out of the speaker.
- ❗ The side of the panel opposite the screws is held in place by small clamps. The panel should easily lift free from the device, but may require gentle prying.

Step 7



- Under the zipper panel are eight more 9.75mm Phillips head screws. Unscrew them and carefully lift the battery cover.
- ⓘ Be careful not to damage the small white ribbon cable which connects the battery cover to the rest of the device.
- 2 small screws hold this part to the cover. For ease of future handling, remove them and gently pull this part out to release the cover.

Step 8



- Locate the cable illustrated in this picture.
- ⓘ Gently unplug the cable from the motherboard.

Step 9



- Carefully lift the battery free of the device, threading the cable through the hole in the case as you do so.

To reassemble your device, follow these instructions in reverse order.