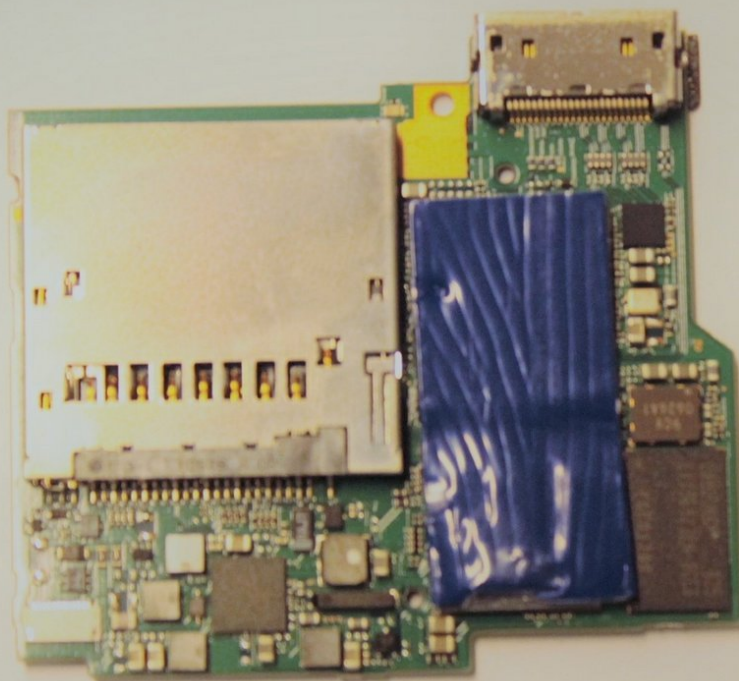




Sony Cyber-Shot DSC-TX9 Card Reader Replacement

This guide will demonstrate how to replace the Memory Card Reader. This will fix the "Unable to Read Memory Card" Error on the Sony Cyber-Shot DSC-TX9.

Written By: Yegor Shea



INTRODUCTION

This guide will demonstrate how to replace the Memory Card Reader. This will fix the "Unable to read memory card" Error.

TOOLS:

- [Spudger](#) (1)
 - [Phillips #00 Screwdriver](#) (1)
 - [Tweezers](#) (1)
-

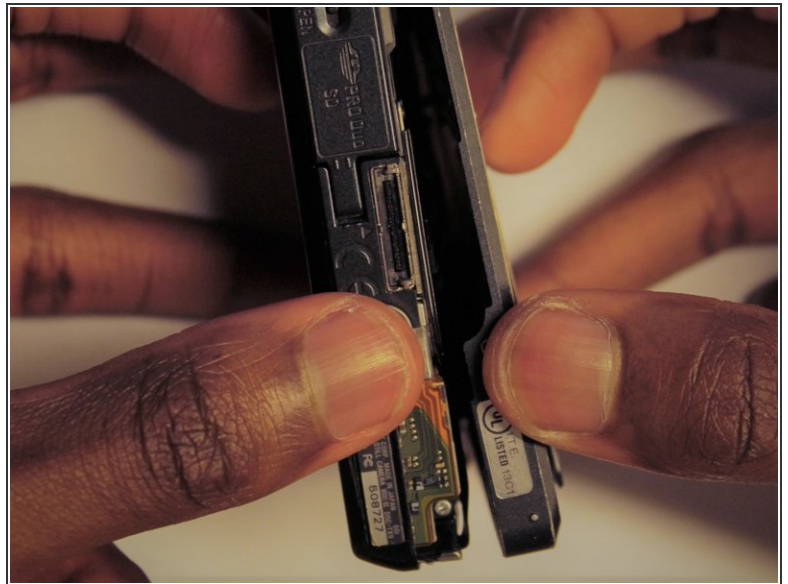
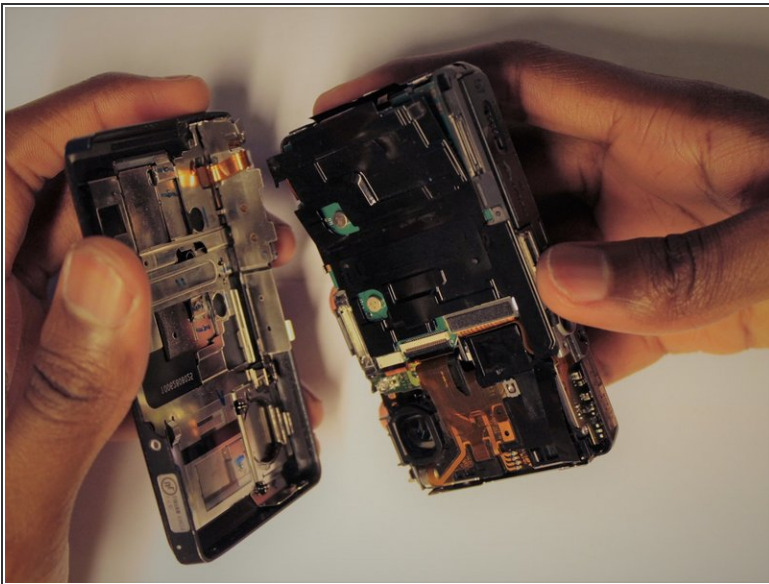
Step 1 — Prerequisites Only



- Use a Phillips #0 screwdriver to unscrew the six 2mm screws on the outer case of the camera.

☞ If there is a battery or SD card inside remove before beginning the process.

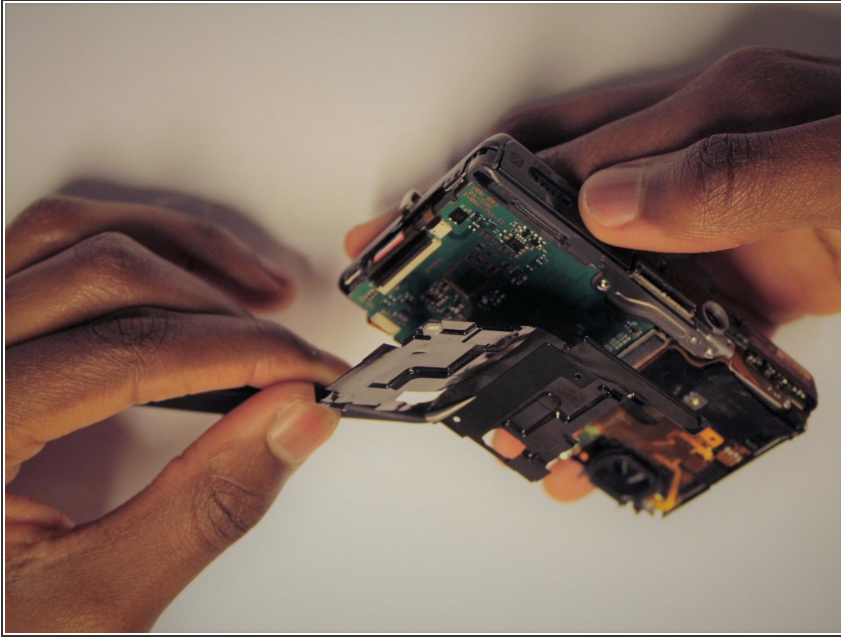
Step 2



- Use your hands or a Spudger to Pull off the front cover of the camera.

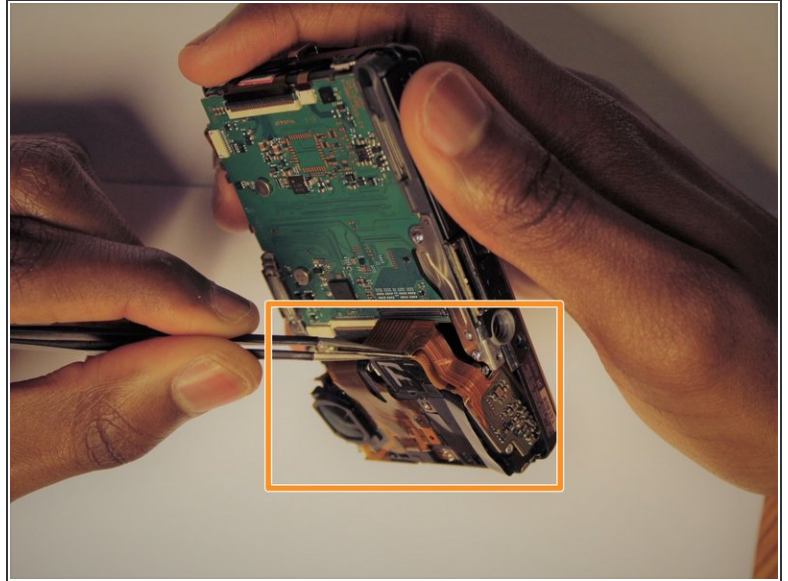
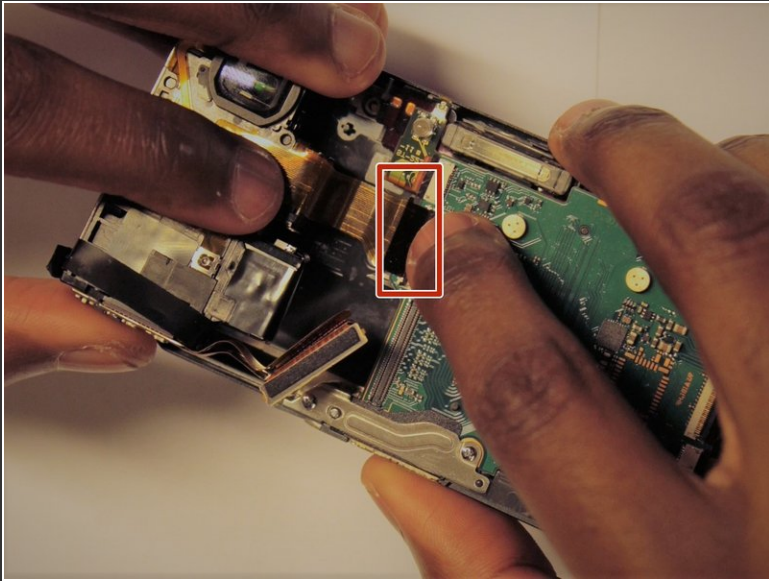
⚠ If the casing is not coming apart easily, do not force it.

Step 3



- Remove the protective black cover layer with your hands and set it aside.
- ⓘ The use of tweezers may be necessary if the cover is difficult to remove.

Step 4

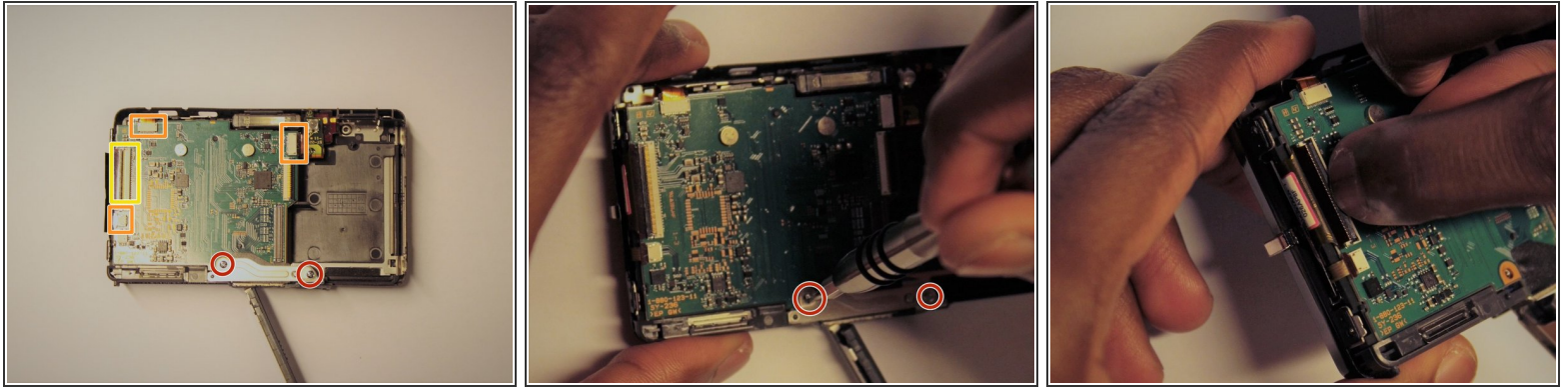


- The ZIF connector can be removed by flipping the small black holder into the upright position and then sliding the ribbon cable out carefully.
- Once this has been done, use tweezers to unplug the flat topped connector for the lens' circuit board from the motherboard.

 **DO NOT** force the ribbon cables or they will rip.

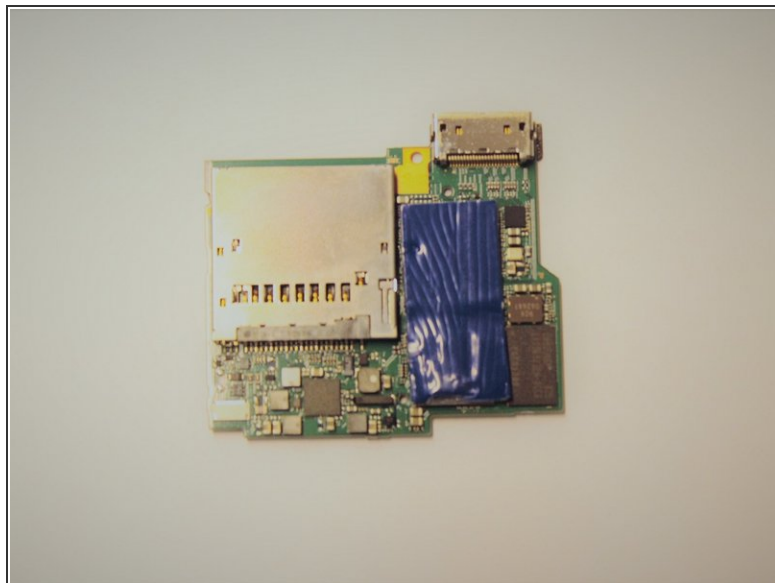
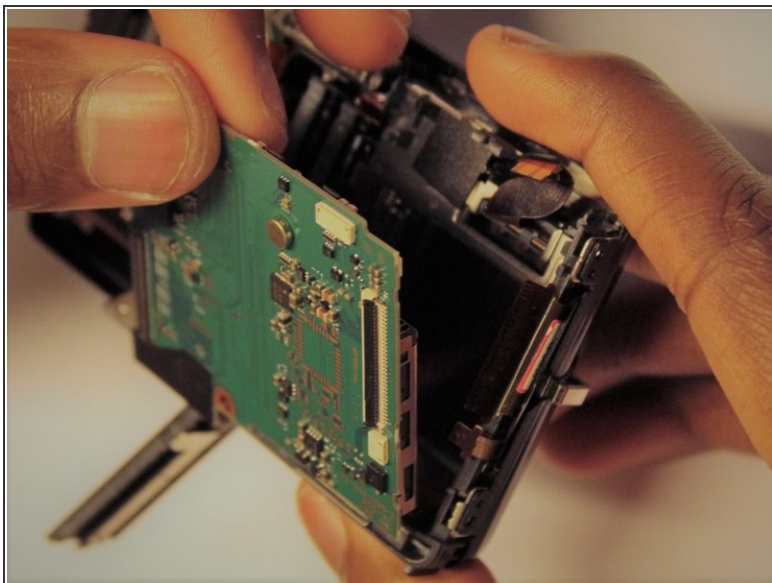
 Refer to the ([Recognizing & Disconnecting Cable Connectors](#)) page for assistance.

Step 5 — Card Reader




- Using a Phillips head screw driver, remove the two screws for the metal plate on the bottom.
 - Detach the smaller ribbon cables by sliding them out.
 - Detach the large ribbon cable by flipping the small black holder in an upright position and then sliding the cable out carefully.
- ⚠ Detach the ribbon cables slowly and carefully or they will rip.

Step 6



- Carefully remove the Memory card circuit board.

 The circuit board should come out with little force. If it does not, make sure all connections are disconnected.

To reassemble your device, follow these instructions in reverse order.