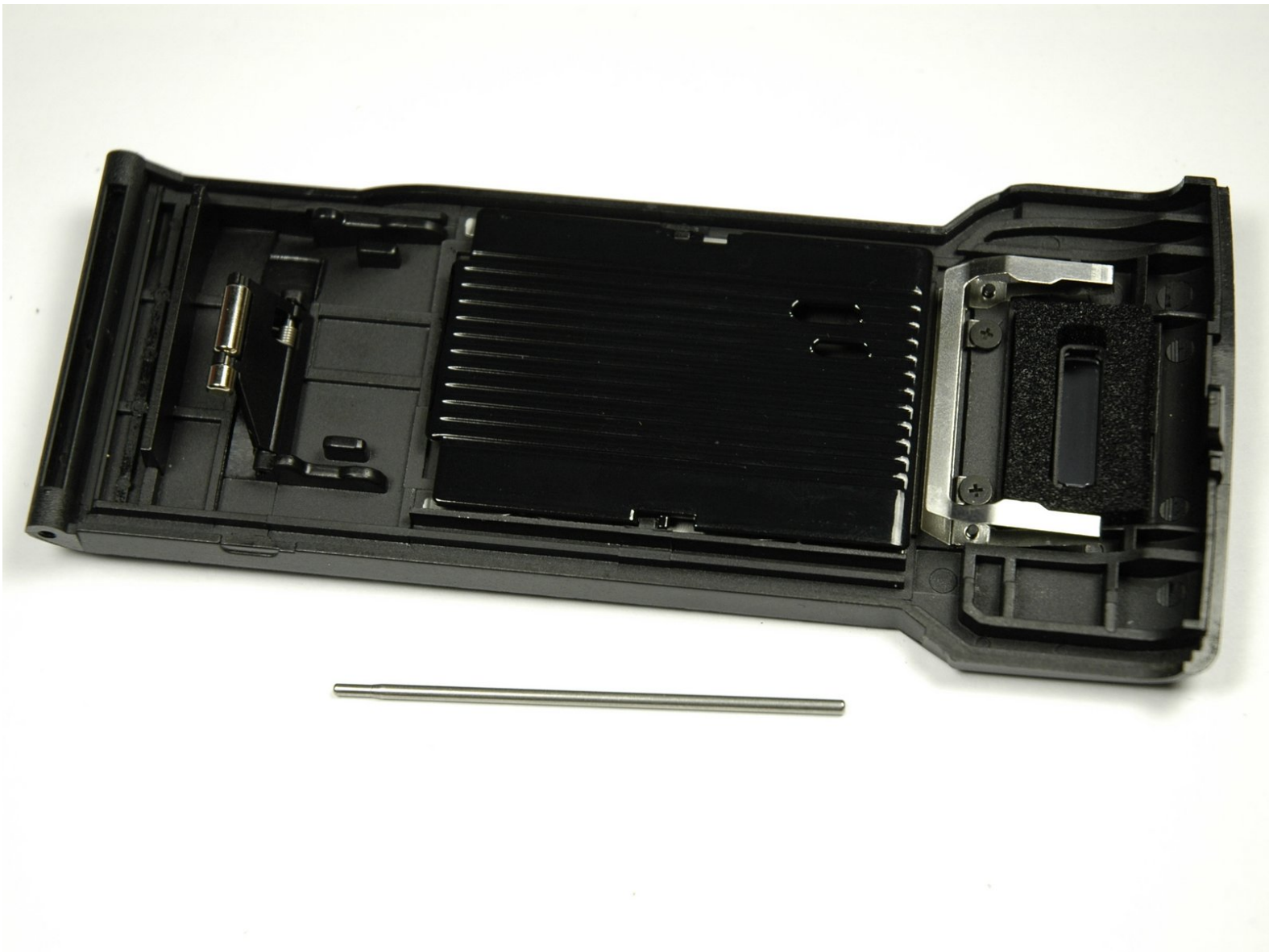




Canon EOS Rebel G Back Panel Replacement

How to remove the bottom portion of the camera to access gears and necessary screw to remove front panel.

Written By: Zach



INTRODUCTION

This guide will instruct you how to remove the back panel of your camera.



TOOLS:

- [Tweezers](#) (1)
 - [Large Needle Nose Pliers](#) (1)
 - [Phillips #00 Screwdriver](#) (1)
 - [Soldering Workstation](#) (1)
 - [Spudger](#) (1)
-

Step 1 — Front Panel



- Using a #00 Phillips screw driver, remove three 4.4 mm Phillips screws as indicated by the red circles.

Step 2



- Using your finger, peel back the textured grip so the components are separated.

Step 3



- Using the flat end of a spudger, loosen the connection between the front panel and the device.
- Remove the front panel using your hands.

Step 4 — Top Panel



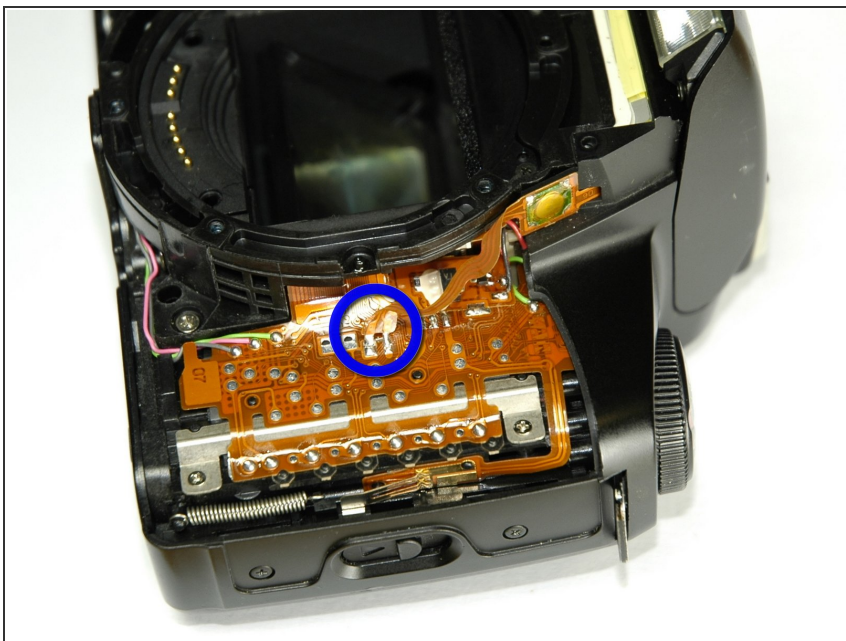
- Turn Camera over.
- Using a #00 Phillips screw driver, unscrew the two 4.9 mm Phillips screws located on either side of the viewfinder.

Step 5



- Using a #00 Phillips screw driver, unscrew the one 5.7 mm Phillips screw located next to the LCD screen.

Step 6



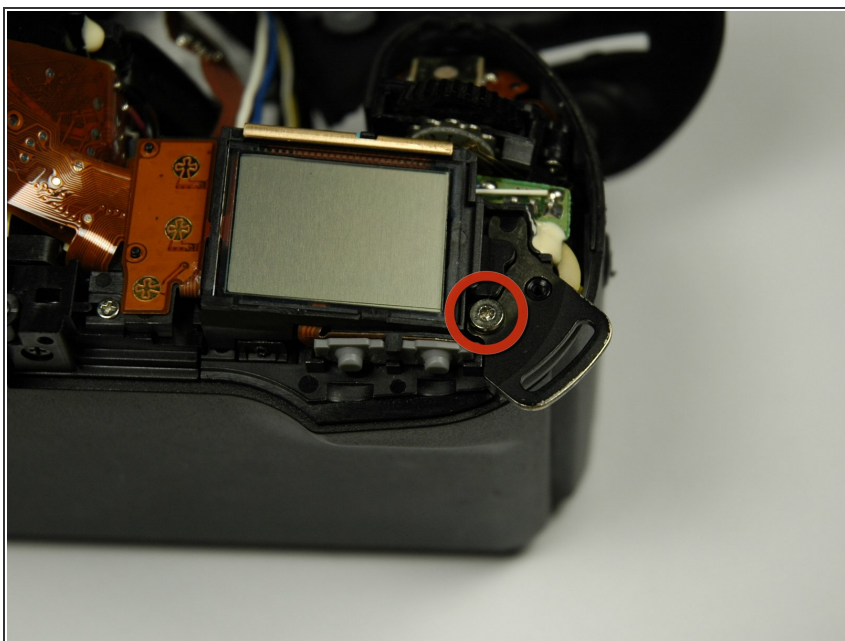
- Lay the camera on its back.
- Unsolder the flash connection from the motherboard as noted by the blue circle.

Step 7



- Remove the top panel by lifting it from the back, pushing it forward over the camera and letting it rotate down in front of the camera.

Step 8 — Back Panel



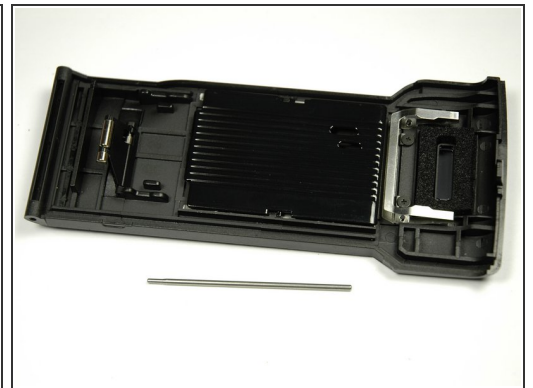
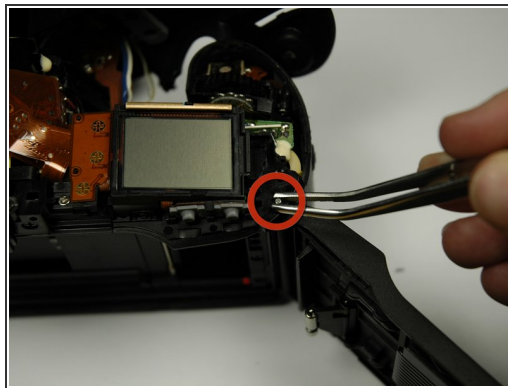
- Using a #00 Phillips screw driver, unscrew the 6.8 mm Phillips screw that holds the strap anchor noted by the red circle.
- Remove the strap anchor.

Step 9



- Unlatch the back panel.
- Using a #00 Phillips screw driver, unscrew the six screws on the bottom of the camera.
 - One 7.4 mm Phillips screw
 - Two 6.0 mm Phillips screws
 - Two 4.4 mm Phillips screws
 - One 3.9 mm Phillips screw

Step 10



- From the bottom of the camera push the hinge rod in with your finger.
- Return the camera to its upright position.
- Use pliers (or tweezers) to pull the rod out from the top.

To reassemble your device, follow these instructions in reverse order.