



Samsung Galaxy TabPro S Battery Replacement

Battery replacement guide

Written By: Jyotsna Gone



INTRODUCTION

Is your tablet not charging, heating up, or the battery is dying off to quickly?

Then maybe its time to replace your tablet's battery.

This guide will give you step by step instructions on how to replace your tablet's battery.



TOOLS:

- [iOpener](#) (1)
 - [iFixit Opening Tools](#) (1)
 - [Black Nylon Spudger](#) (1)
 - [Spudger](#) (1)
-

Step 1 — Battery



- Place the device face down on a flat work surface.

Step 2



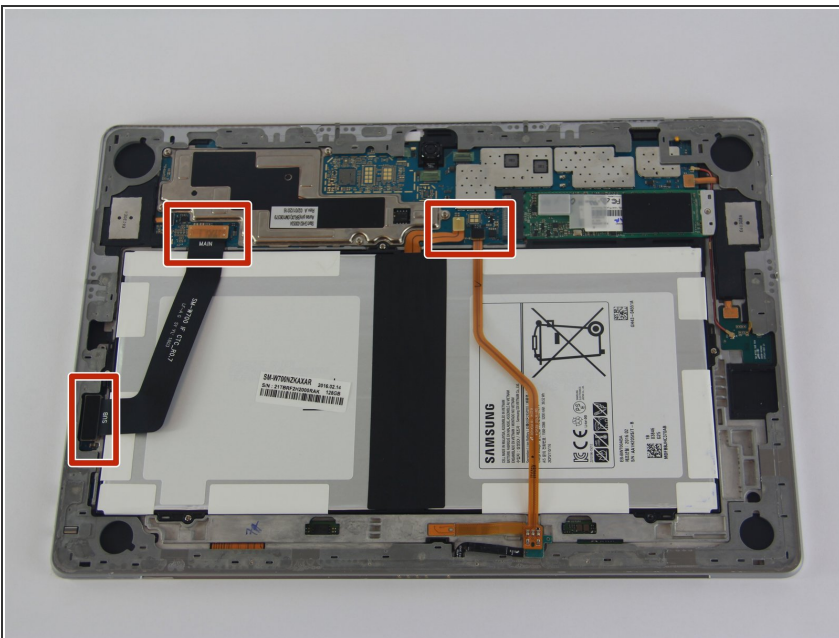
- Heat the iOpener in the microwave for 30 seconds. Then place it on each side for 20 seconds in order to loosen the adhesive sealing on the device.

Step 3



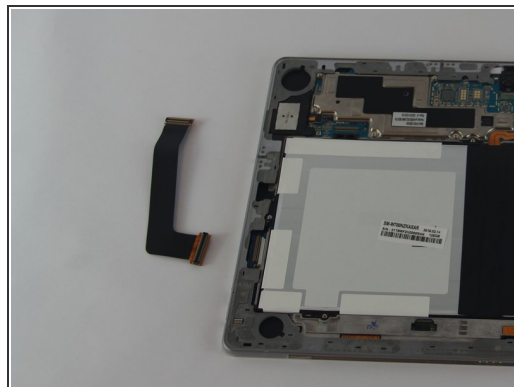
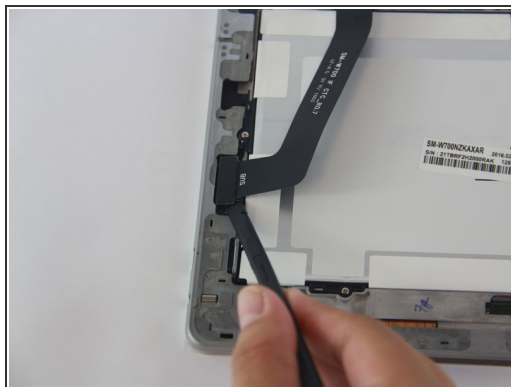
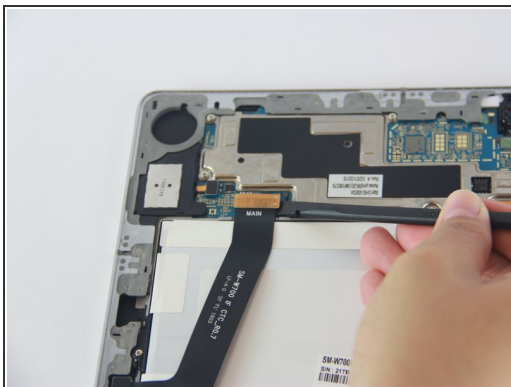
- Using the plastic opening tool, open up the back of the device.

Step 4



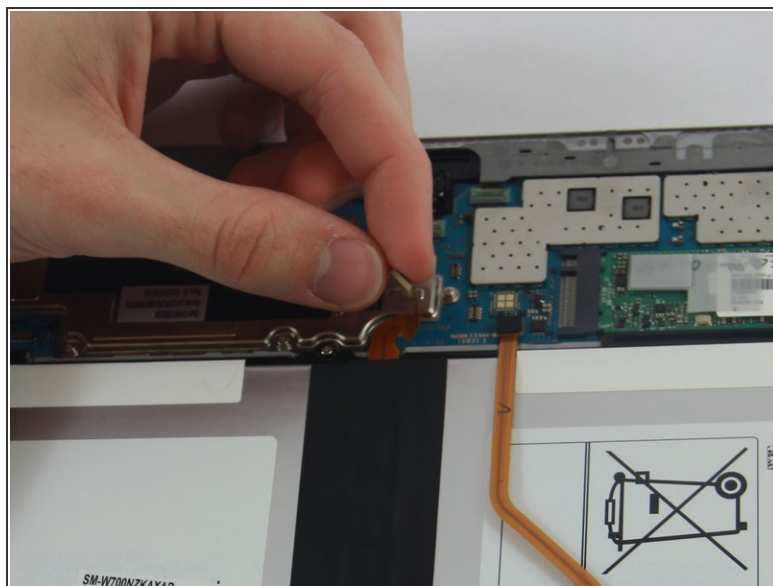
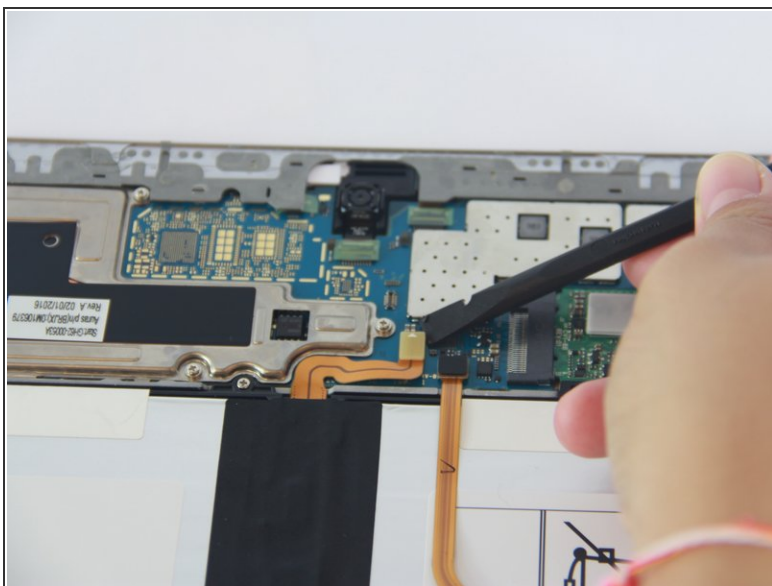
- Once opened you will notice three locations (boxed in red) that will need to be disconnected in order to proceed.

Step 5



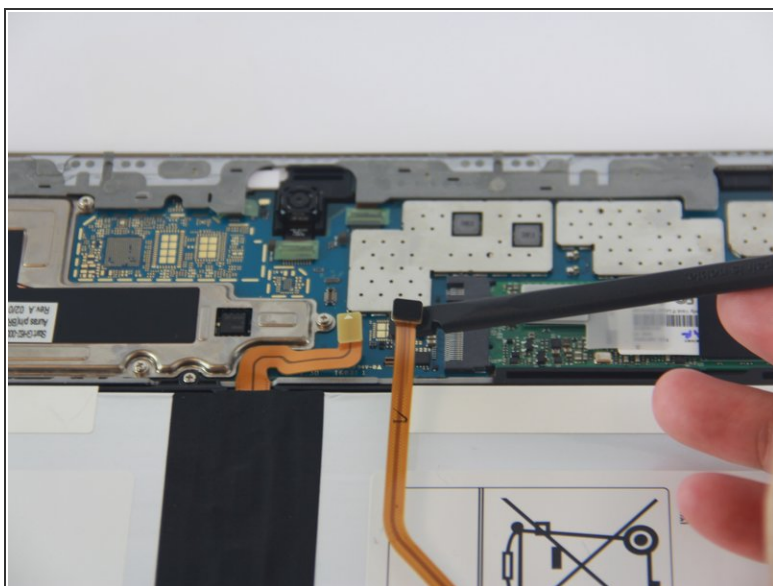
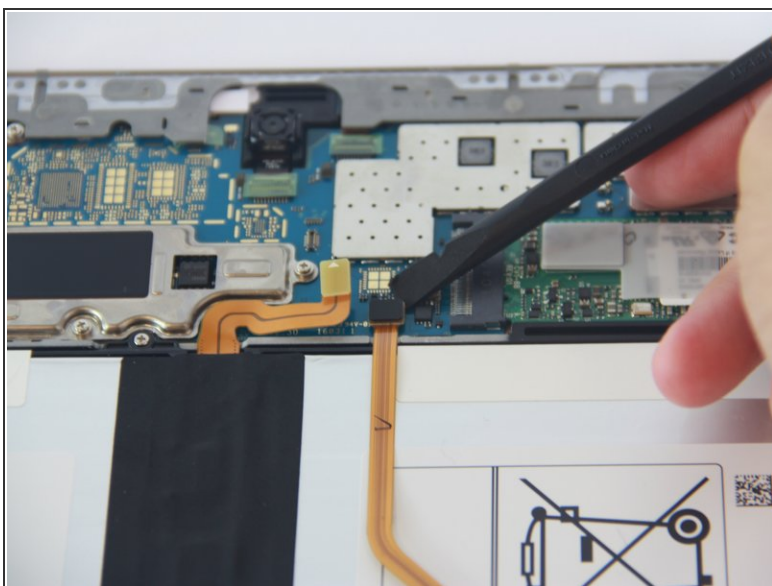
- Using the black nylon spudger, for the black ribbon cable you must gently apply pressure up from underneath until you hear a popping sound.

Step 6



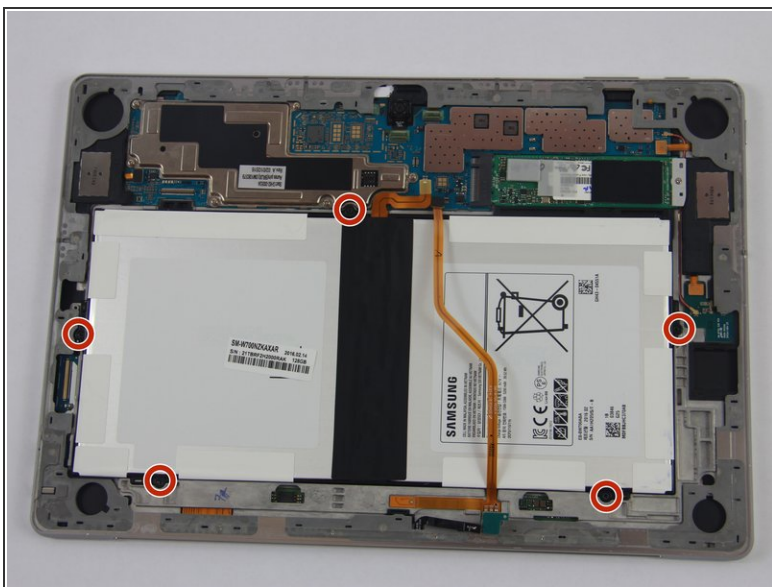
- Use the black nylon spudger tool to gently remove the small orange ribbon cable from the motherboard.

Step 7



- Use the black nylon spudger tool to gently remove the long orange ribbon cable from the motherboard.

Step 8



- Using a J000 screwdriver, unscrew the five 3.4 mm Philips screws.

Step 9



- After removing the leftmost ribbon cable and all five screws, we can then use a black nylon spudger to lift the battery out of the device.

To reassemble your device, follow these instructions in reverse order.