

SodaStream Source Microchip Replacement

The SodaStream Source is battery operated. But...

Written By: Angela Mossgrove



INTRODUCTION

The SodaStream Source is battery operated. But If you are experiencing trouble with your device, and you have replaced the battery, it could be the microchip needs to be replaced. This guide will assist you in removing the carbonation block to access the microchip and replace it.

TOOLS:

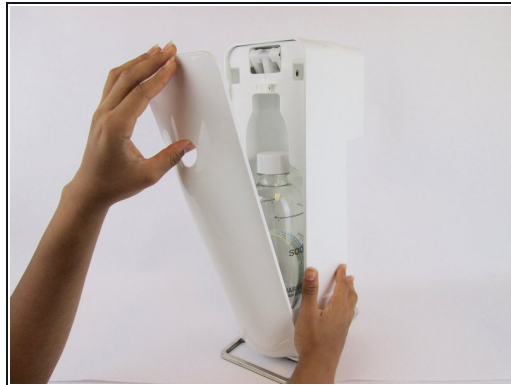
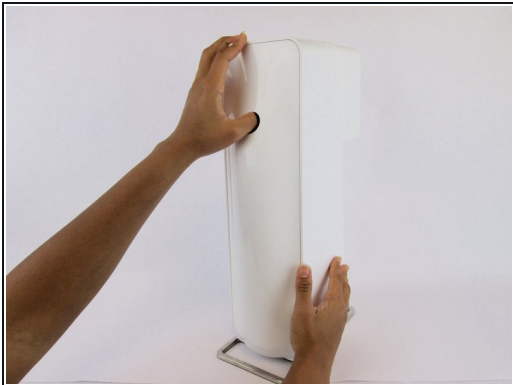
Phillips #1 Screwdriver (1)

Metal Spudger (1)

Hot Glue Gun (1)

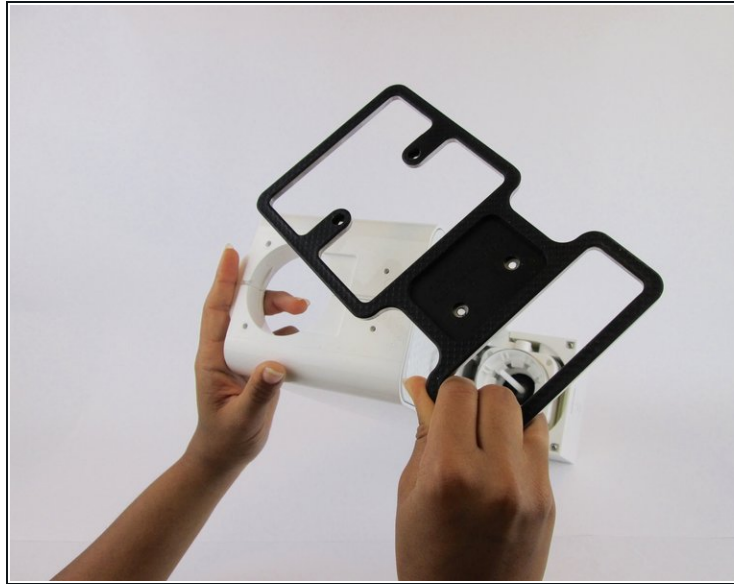
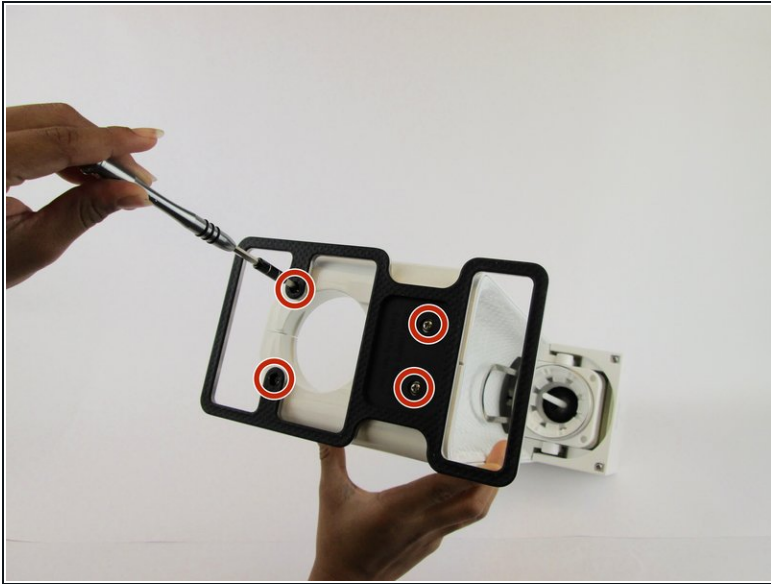
Spudger (1)

Step 1 — SodaStream Source External Disassembly



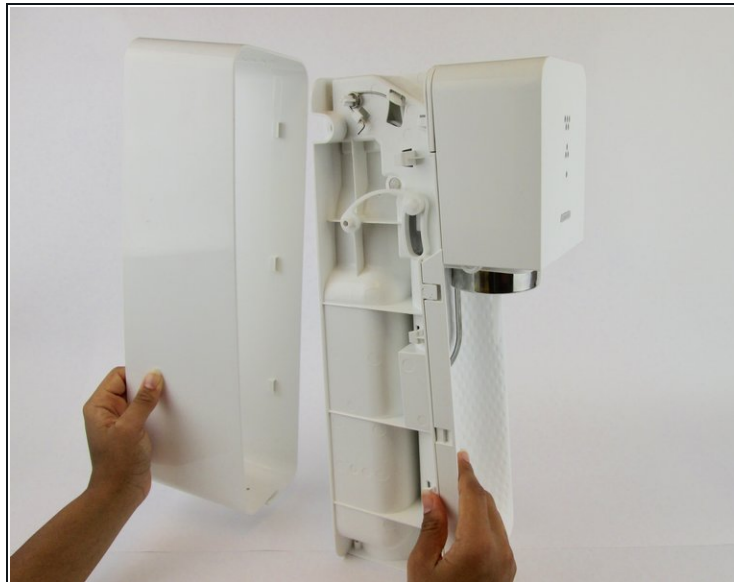
- Remove the soda bottle and the CO₂ canister from the machine.

Step 2



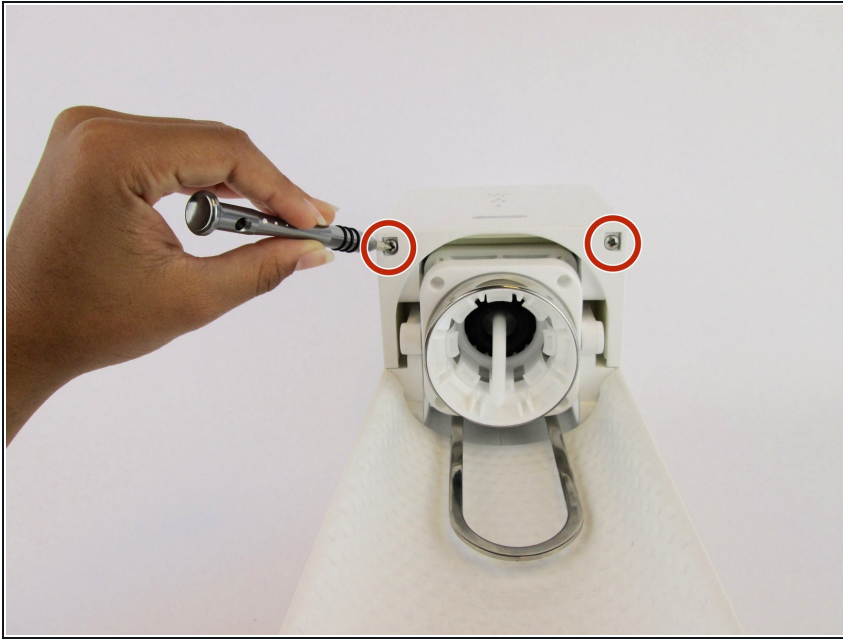
- Remove the four 17.8 mm screws from the bottom metal base using a [Phillips #1 screwdriver](#).

Step 3



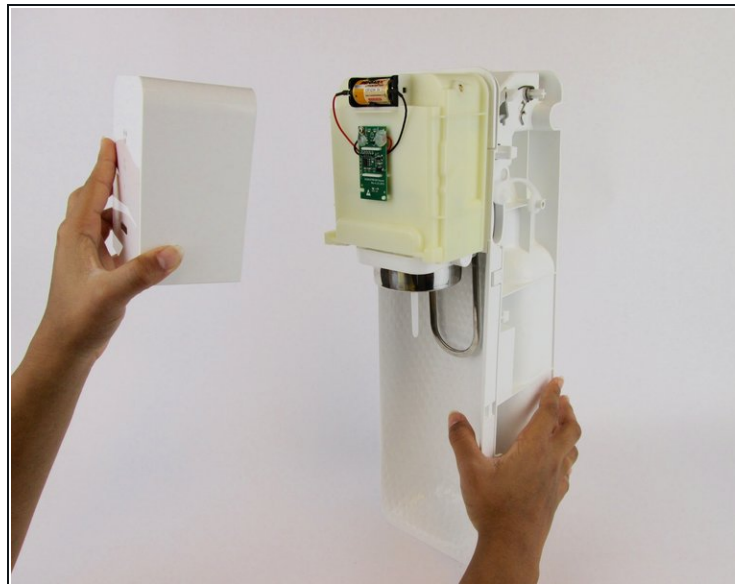
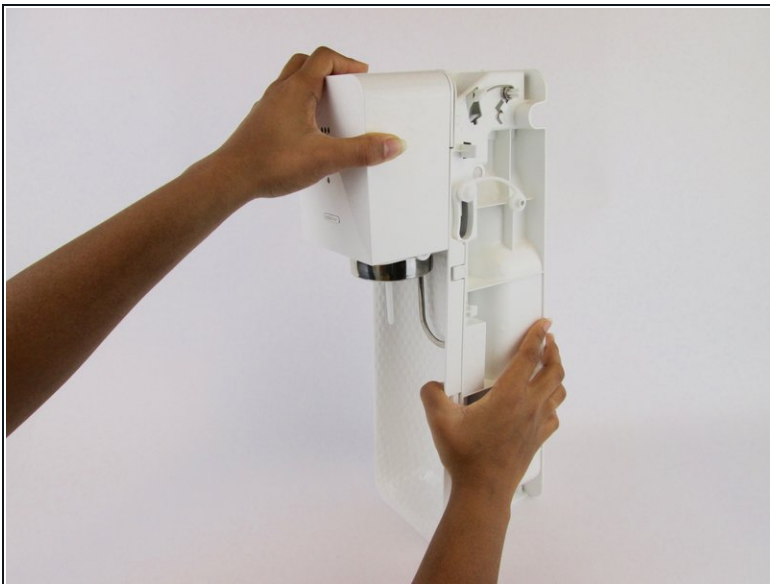
- Pull the outer cover away from the front of the device.

Step 4



- Remove the two 18.2 mm screws from the bottom of the front cover using a [Phillips #1 screwdriver](#).

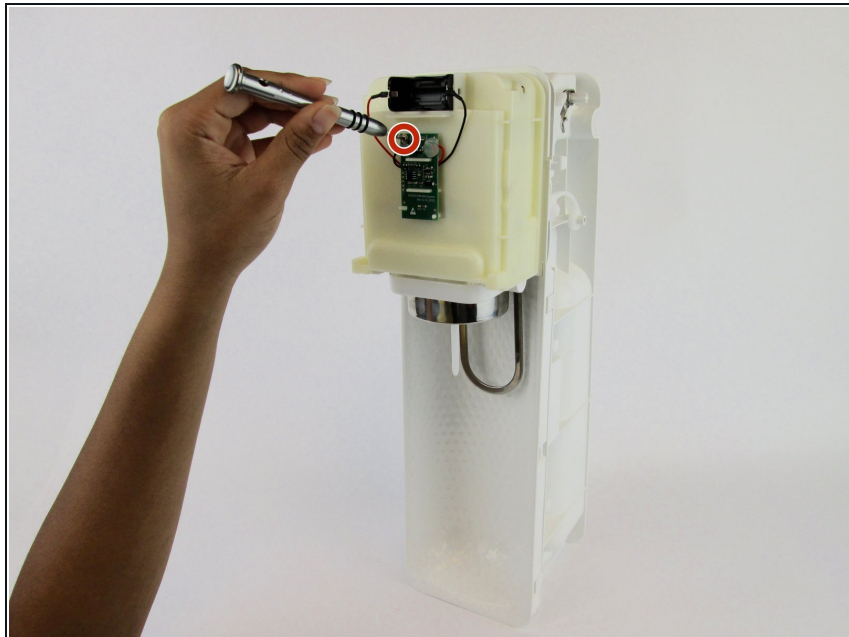
Step 5



- Firmly pull the front cover off.

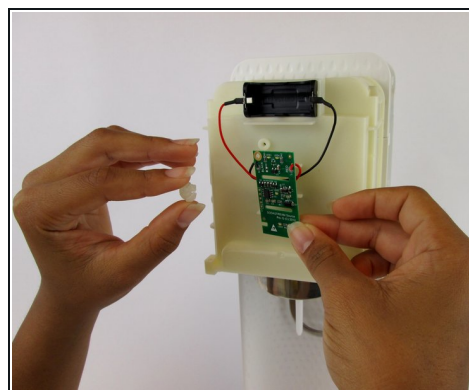
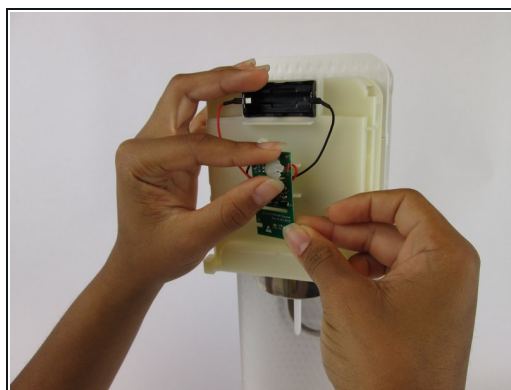
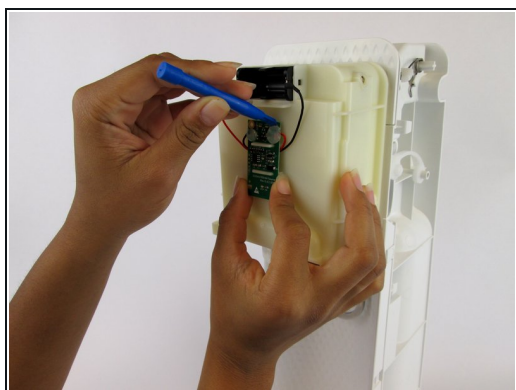
i This piece is difficult to remove and requires force. It may help to use a wide, thin object to pry it off (like a [Jimmy](#)).

Step 6 — Microchip



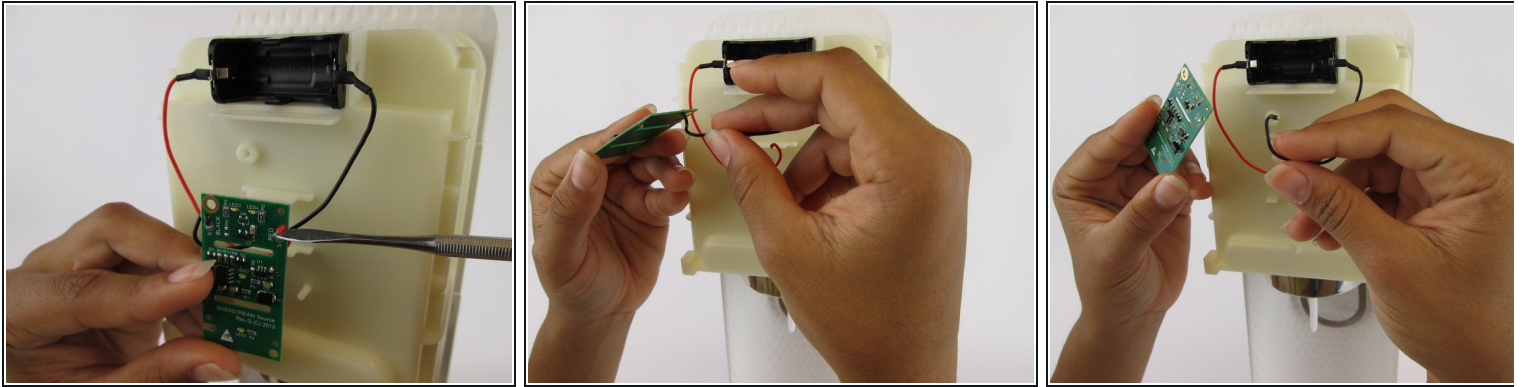
- Remove the 9.1 mm screw from the microchip.

Step 7



- Wedge the plastic spudger between the microchip and the glue dot until the glue pops off.

Step 8



- Use the spudger to lift the edge of the wire and pull the wire out of the microchip.

⚠ Use an ESD tool such as a [nylon spudger](#) when working with potentially dangerous electronics.

- ① While reconnecting the wires, you will need a hot glue gun to reattach the wire ends to the new chip.

To reassemble your device, follow these instructions in reverse order.