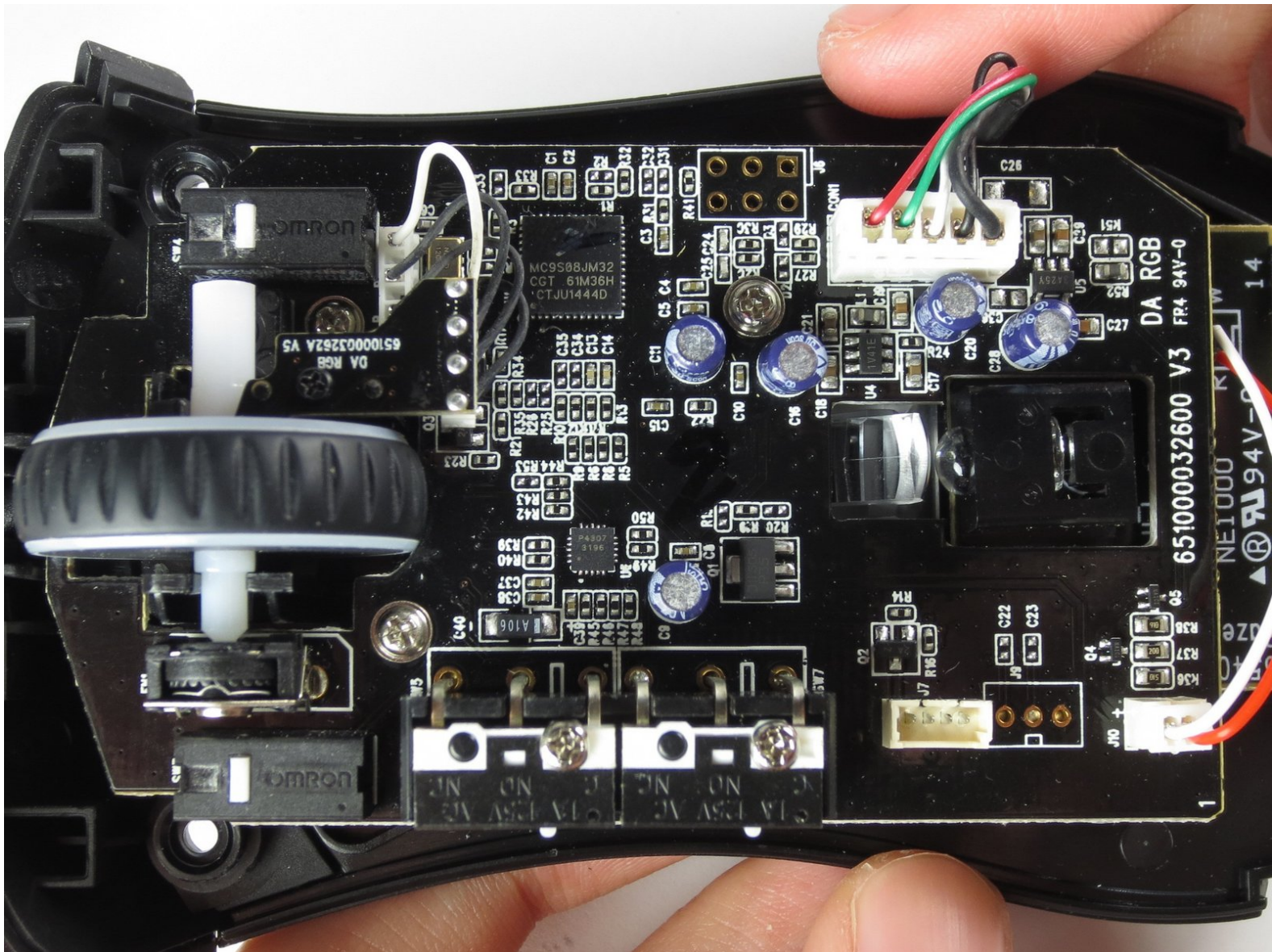




Razer DeathAdder Chroma Motherboard Replacement Guide

This guide will inform you how to remove and isolate the Razer DeathAdder Chroma motherboard from the device casing.

Written By: Nathan D. Kappler



This document was generated on 2020-11-24 07:28:39 AM (MST).

INTRODUCTION

The Razer DeathAdder Chroma may experience critical issues related to the device's motherboard. To resolve them, it might be necessary to fix components below the motherboard.



TOOLS:

- [Spudger](#) (1)
 - [Phillips #0 Screwdriver](#) (1)
 - [Phillips #000 Screwdriver](#) (1)
-

Step 1 — Outer Casing



- ❗ Opening the mouse casing will void any warranty that exists for the mouse.
- Turn the mouse over so the bottom is facing up.

Step 2



- Use the blunt end of the spudger to pry the adhesive rubber pads from the top left and right edges.

Step 3



- Use a Phillips #0 screwdriver to remove two 6.7 mm screws.

Step 4



- Use your fingers to identify the location of the screw under the bottom label.

Step 5



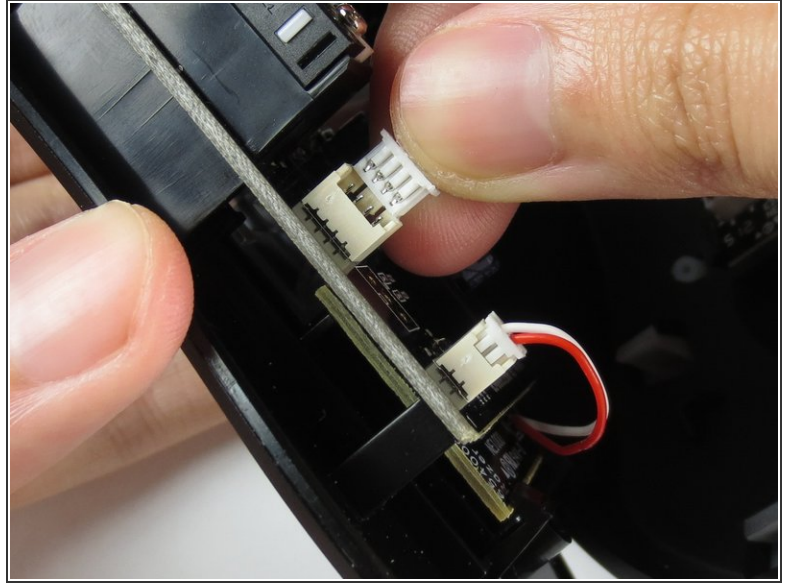
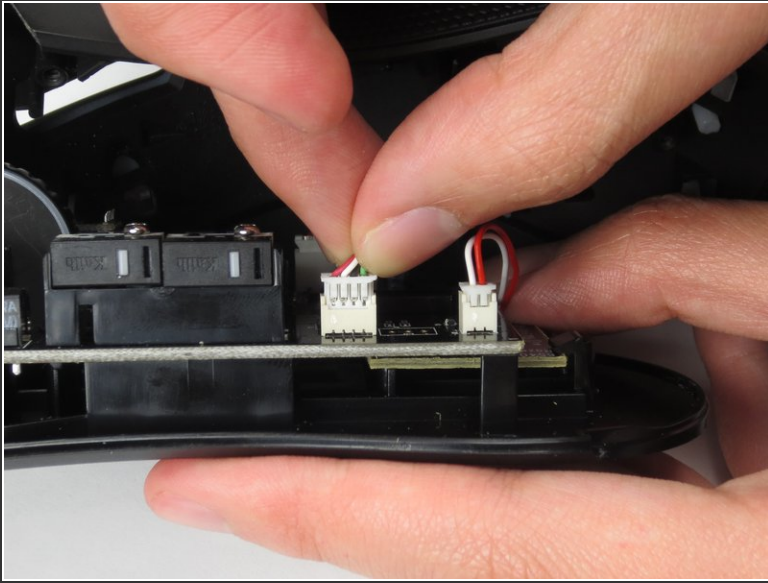
- Use a Phillips #0 screwdriver to remove one 6.7 mm screw.
- ⓘ Clear the label away from around the screw for easier removal.

Step 6



- Turn the mouse over so the bottom is facing down.
 - Separate the top casing from the bottom base by pulling the top casing upwards.
- ⚠ Separating the casing too quickly could damage the ribbon connector between the motherboard and the LED lights.

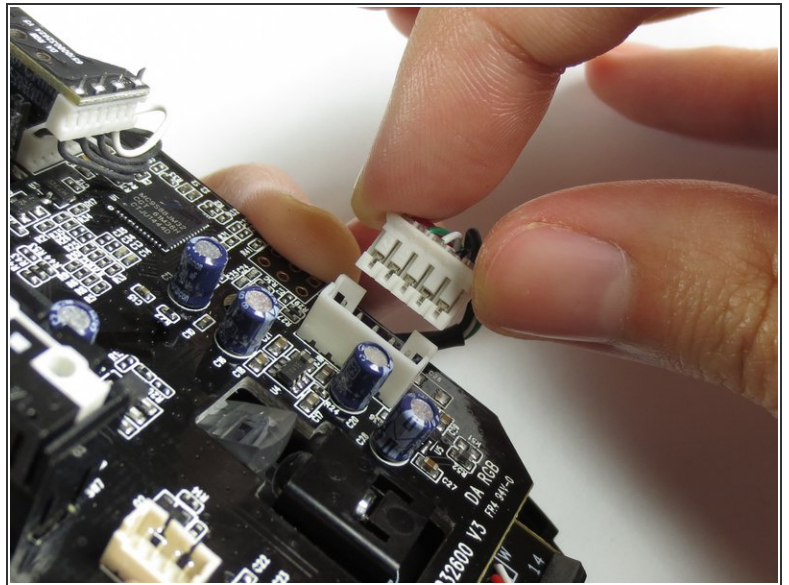
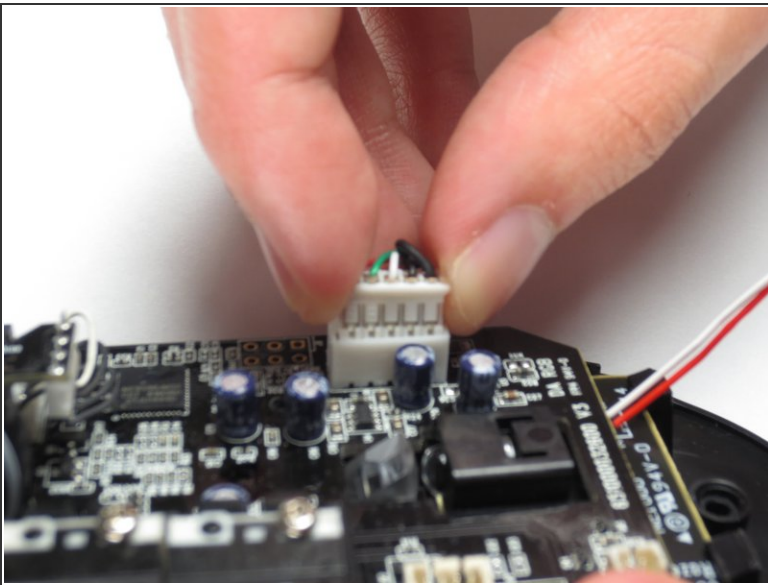
Step 7



- Disconnect the ribbon connector between the motherboard and the LED lights by pulling upward.

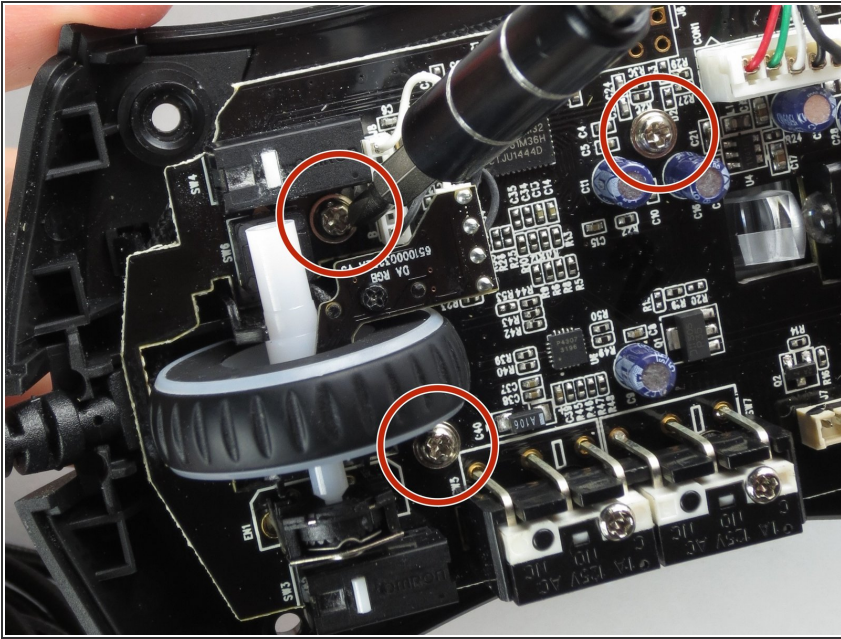
⚠ Pulling too hard could damage the wire connections.

Step 8 — Motherboard



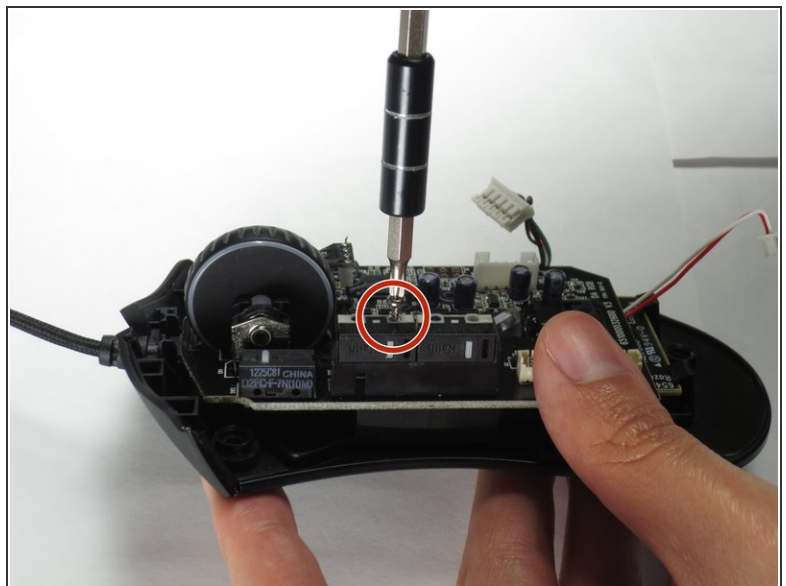
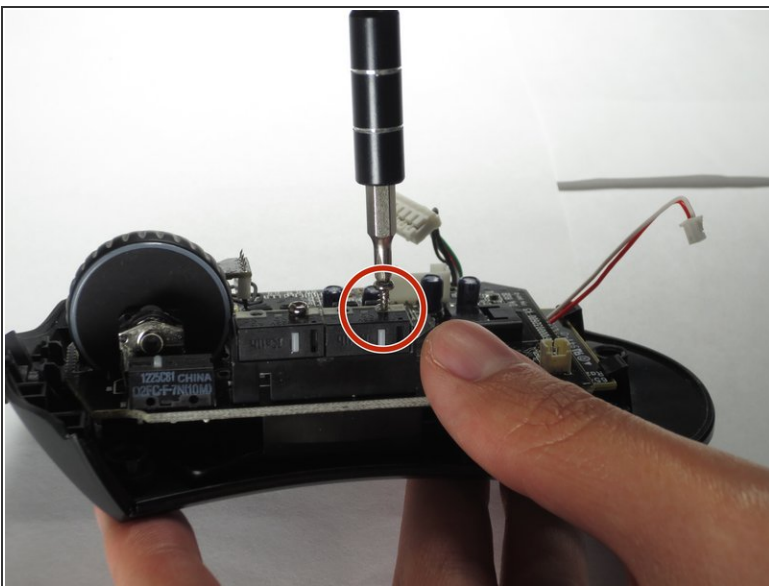
- Disconnect the ribbon connector between the motherboard and the USB cable by pulling upward.

Step 9



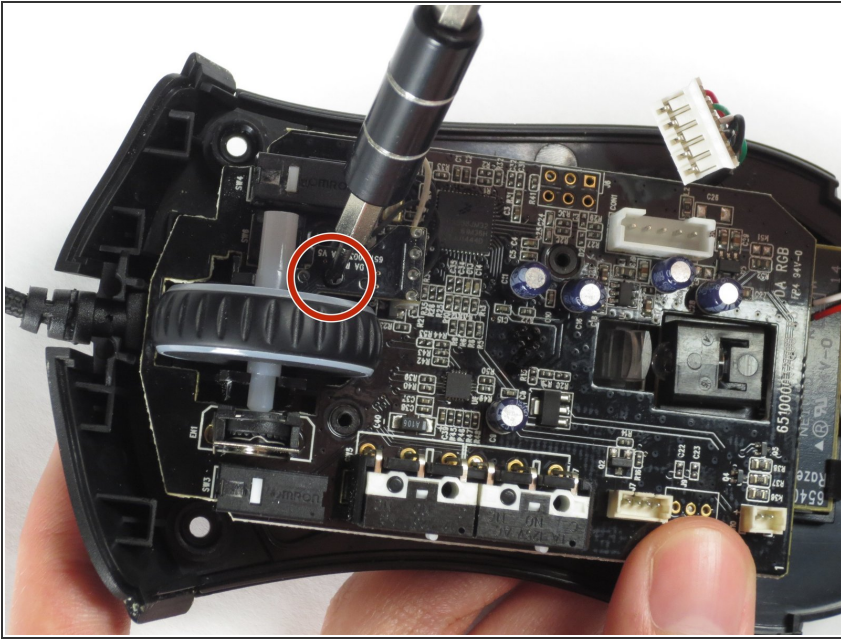
- Use a Phillips #0 screwdriver to remove three 5.5 mm screws.

Step 10



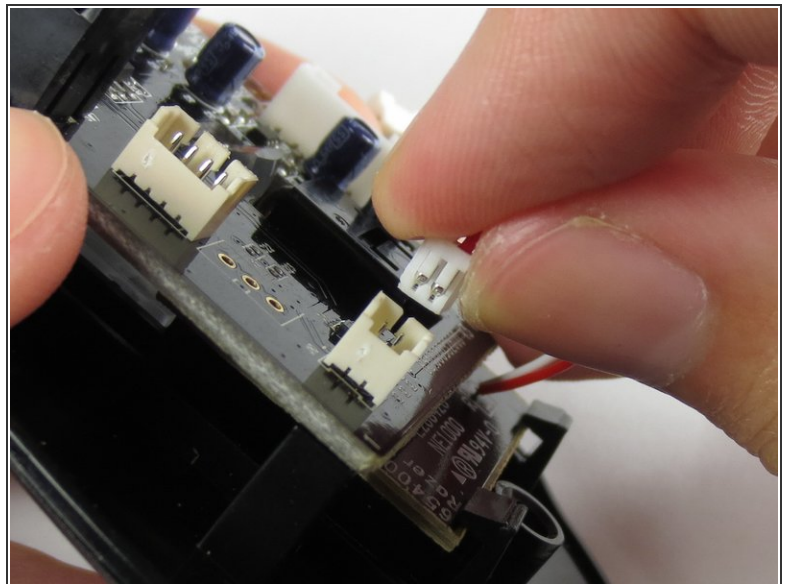
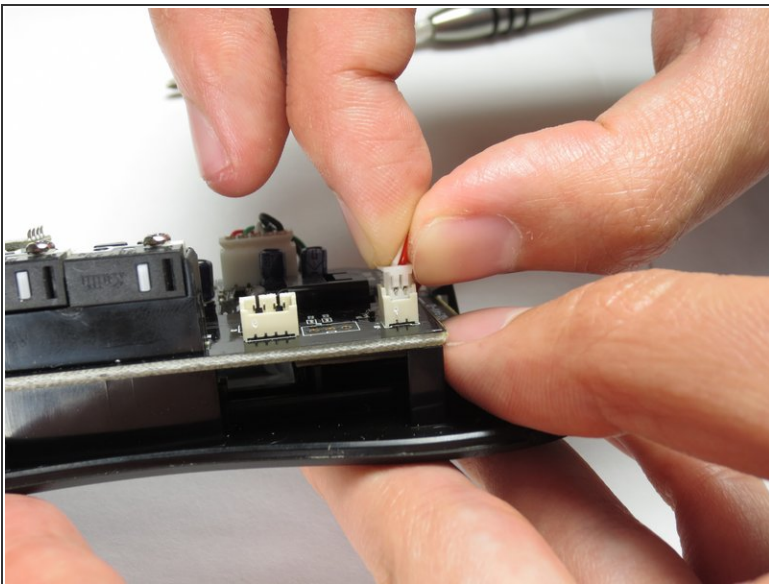
- Use a Phillips #0 screwdriver to remove two 11.5 mm screws on the side buttons.

Step 11



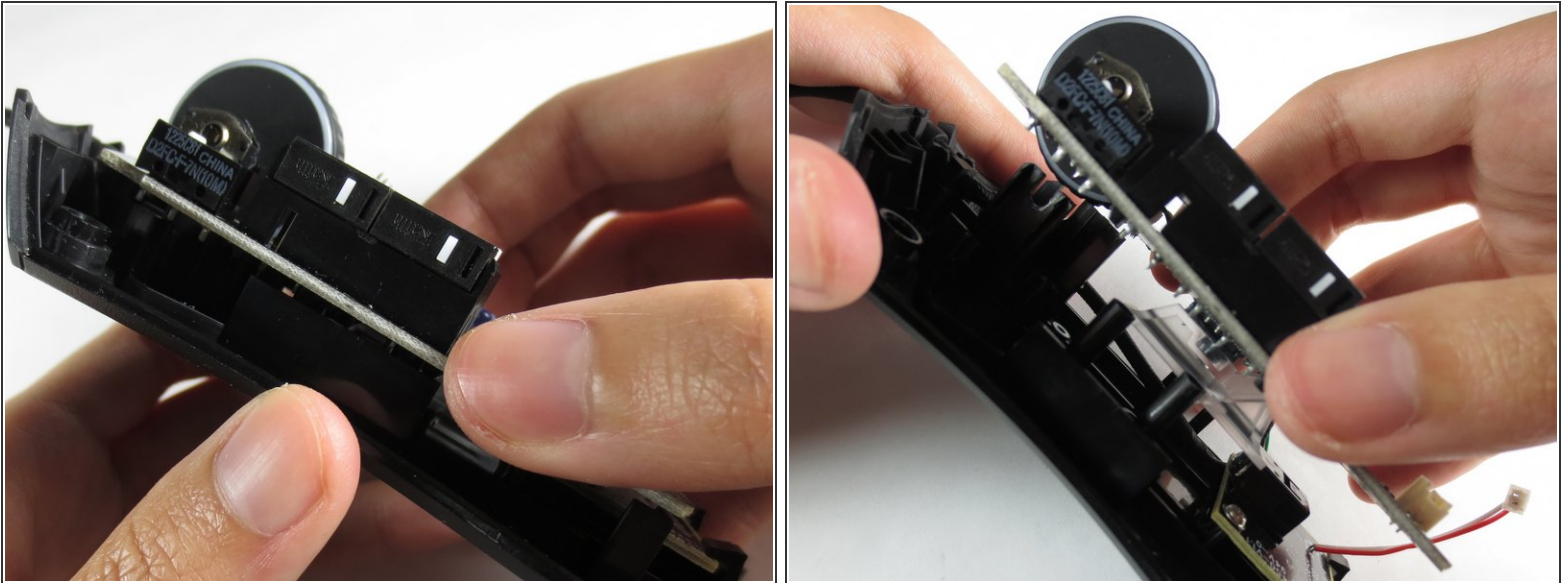
- Use a Phillips #000 screwdriver to remove one 5.0 mm screw.

Step 12



- Disconnect the ribbon connector between the motherboard and the optical sensor.

Step 13



- Remove the motherboard by grasping the sides and gently pulling upward.

To reassemble your device, follow these instructions in reverse order.