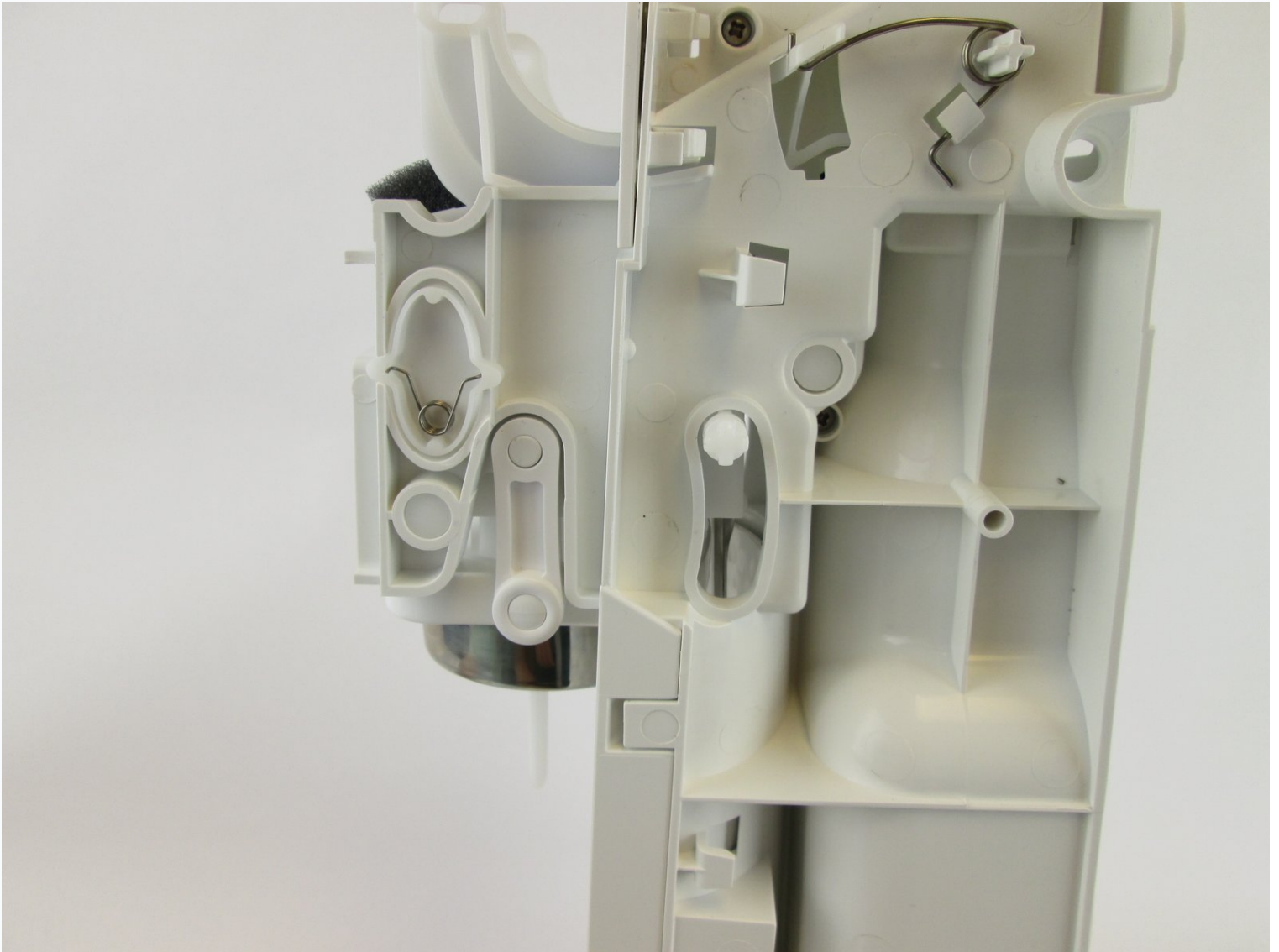




SodaStream Source Internal Disassembly

Written By: Angela Mossgrove

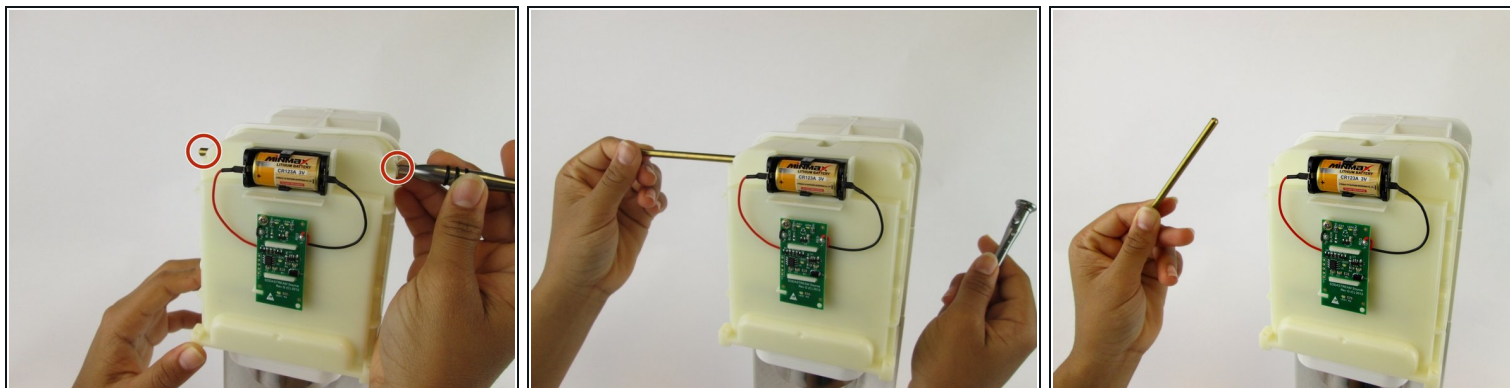


TOOLS:


iFixit Opening Tool (1)

Phillips #1 Screwdriver (1)

Step 1 — SodaStream Source Internal Disassembly



- Push the brass bar, located in the top of the device, out of the carbonating block.

 You can use the end of your screwdriver to push this piece out.

Step 2



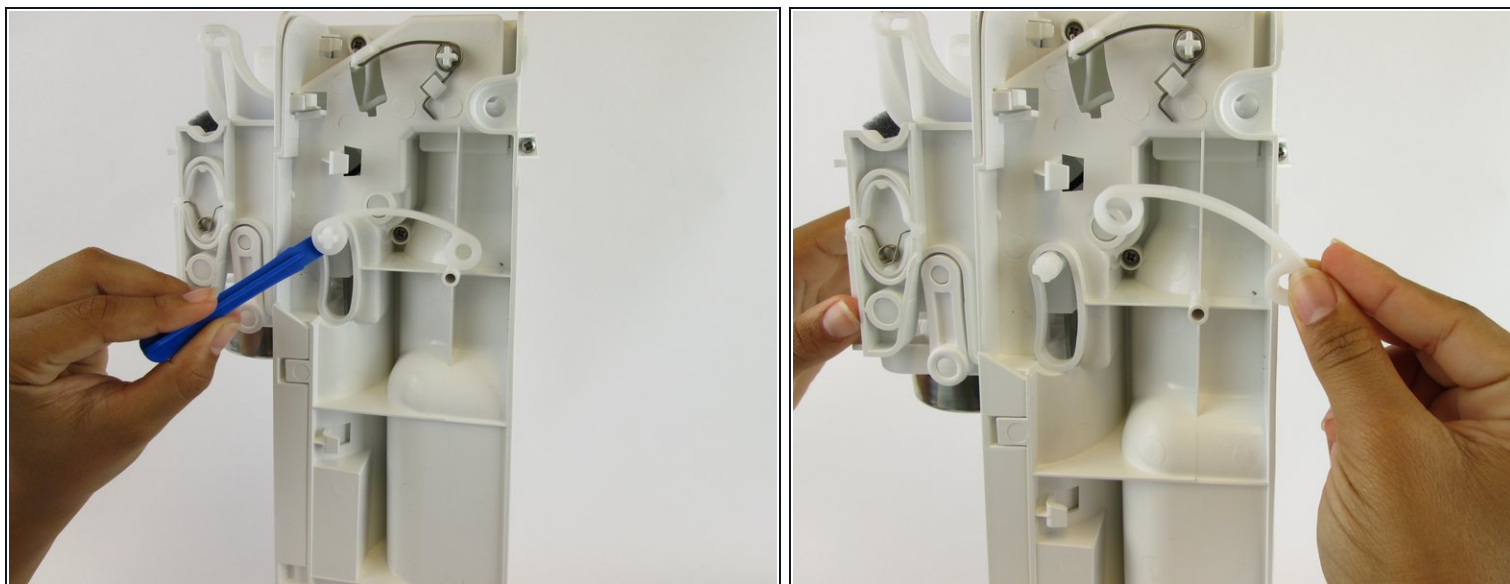
- Slide the yellow battery cover up and away to remove it from the device.

Step 3



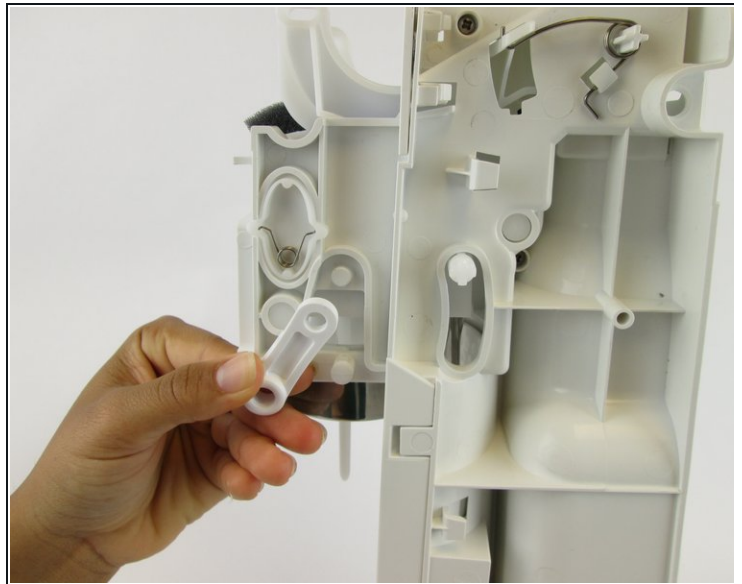
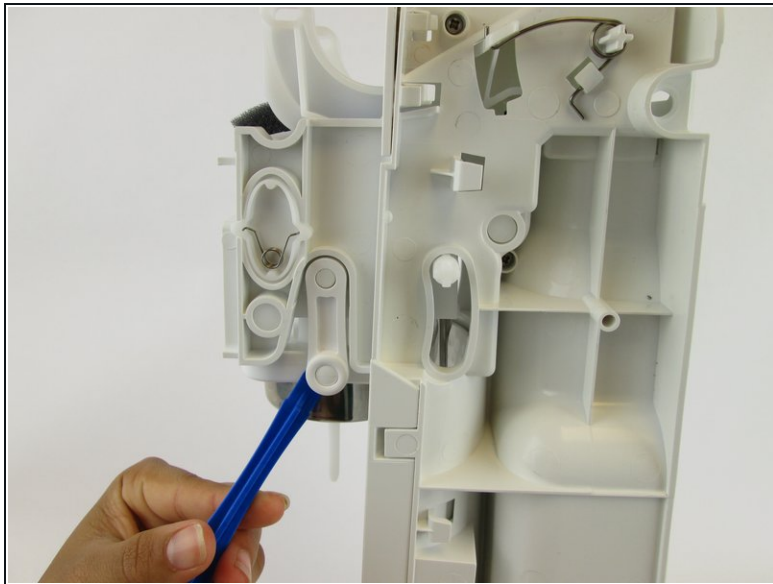
- Unhook the bottom piece of the plastic arm on each side of the device.

Step 4



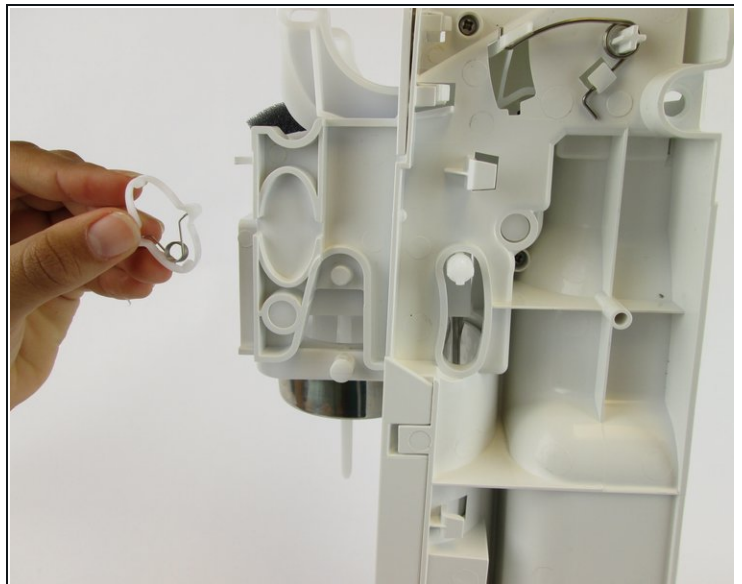
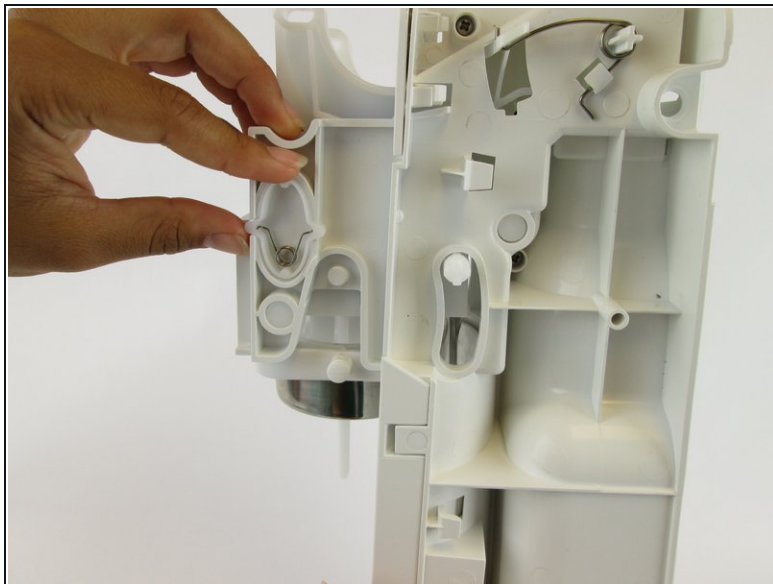
- Lift the top of the plastic arm with the spudger and remove it on both sides.

Step 5



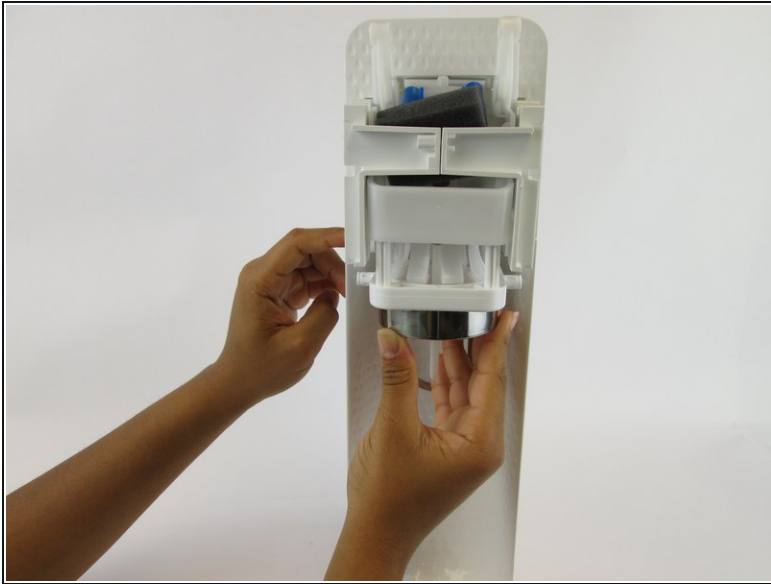
- Remove the plastic piece, located near the front of the carbonating block, from both sides of the device using a plastic opening tool or nylon spudger.

Step 6



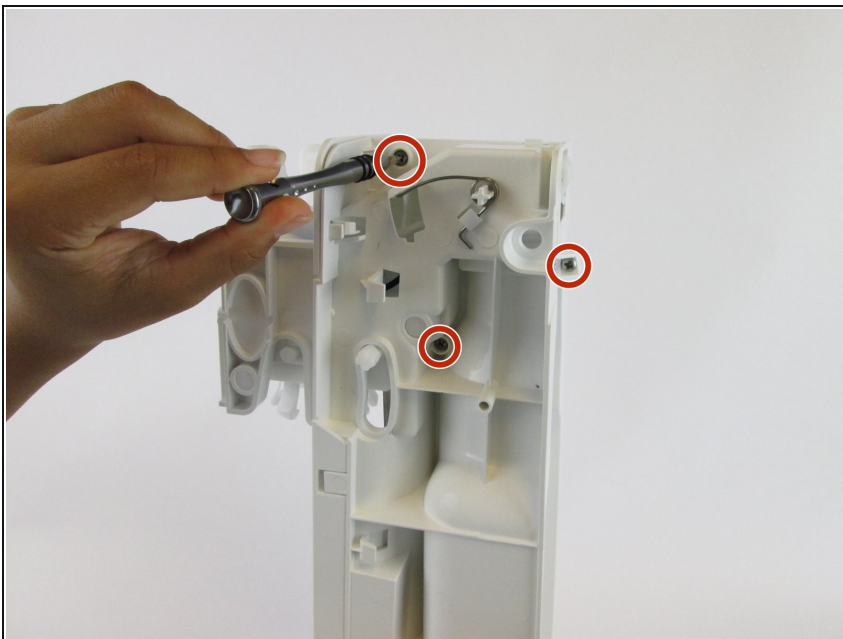
- Remove the plastic oval and the spring within it.

Step 7



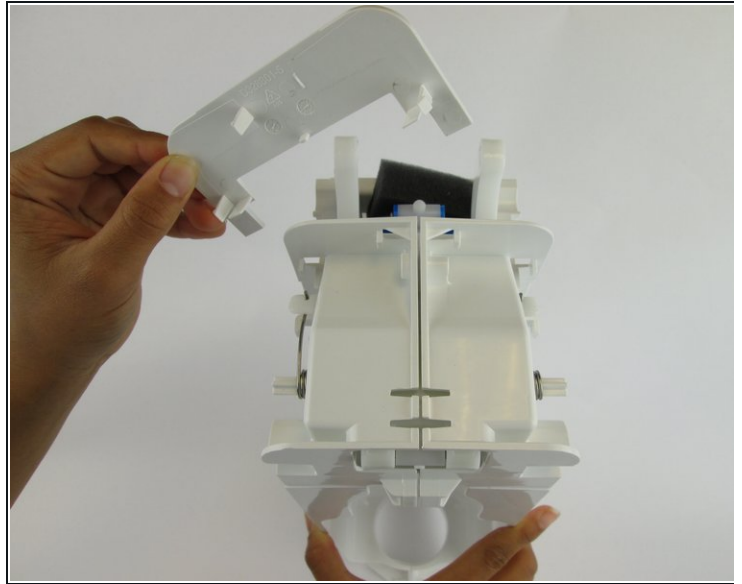
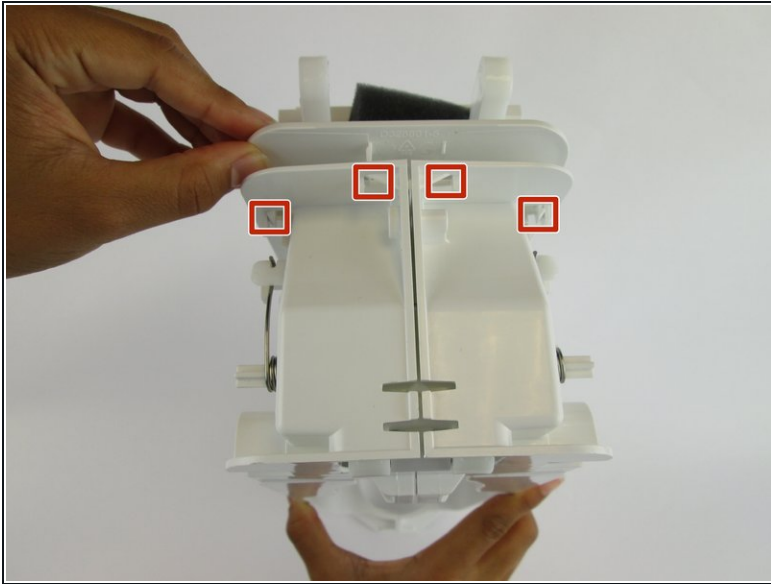
- Pull the loader tab cover down and away from the rest of the carbonating block.

Step 8



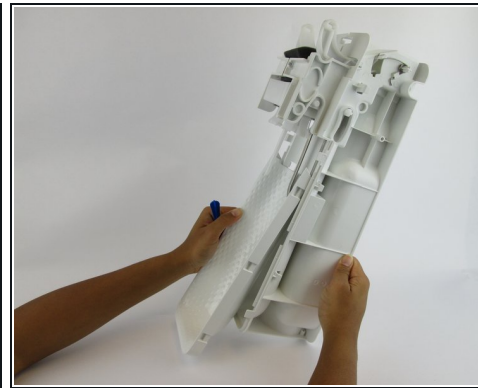
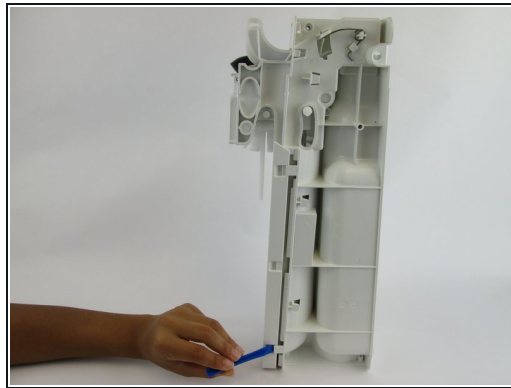
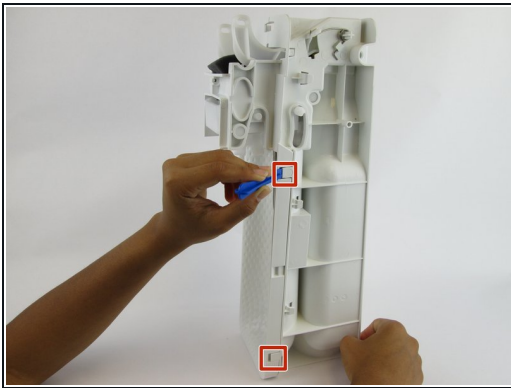
- Remove the three 17.9 mm screws located on the right side.
- ⓘ These screws may be difficult to access.

Step 9



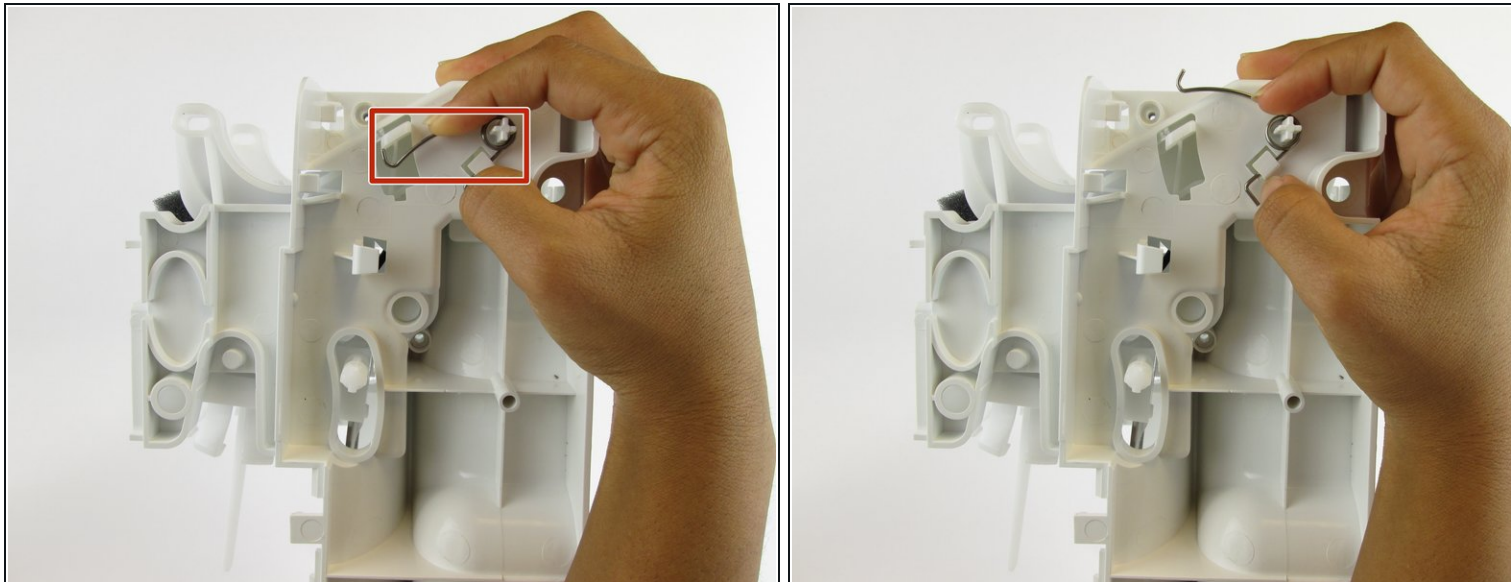
- Unhook the four clips on the top of the carbonating block and remove the plastic cover.

Step 10



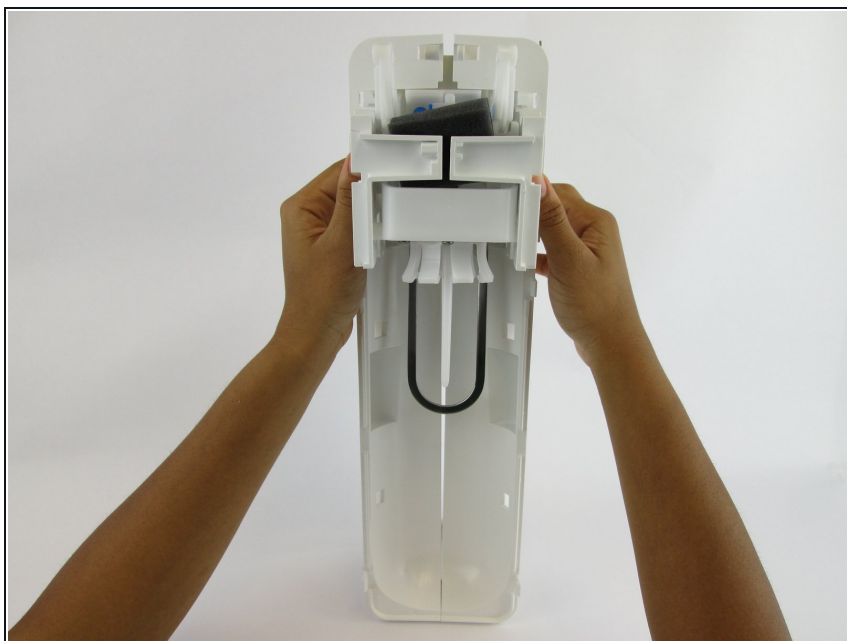
- Lift the clips located on both sides with the plastic spudger. Slide the front cover off.

Step 11



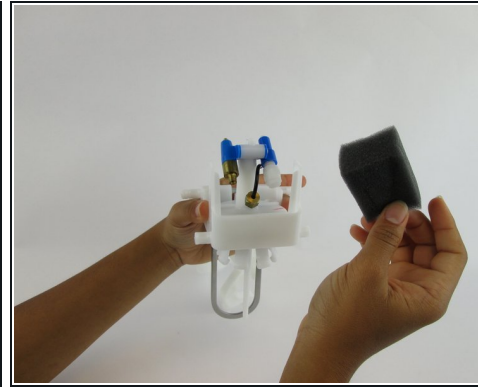
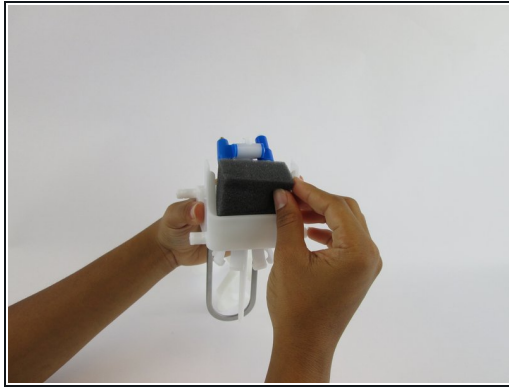
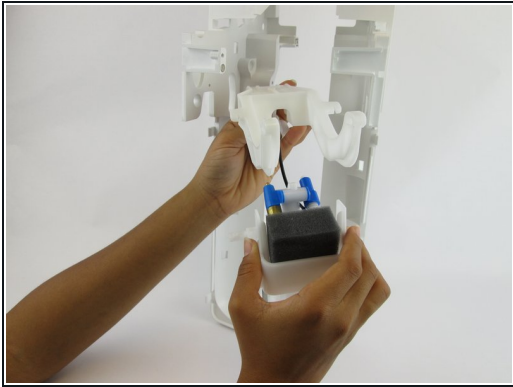
- Unhook the silver spring arms on both sides of the device by pushing down.

Step 12



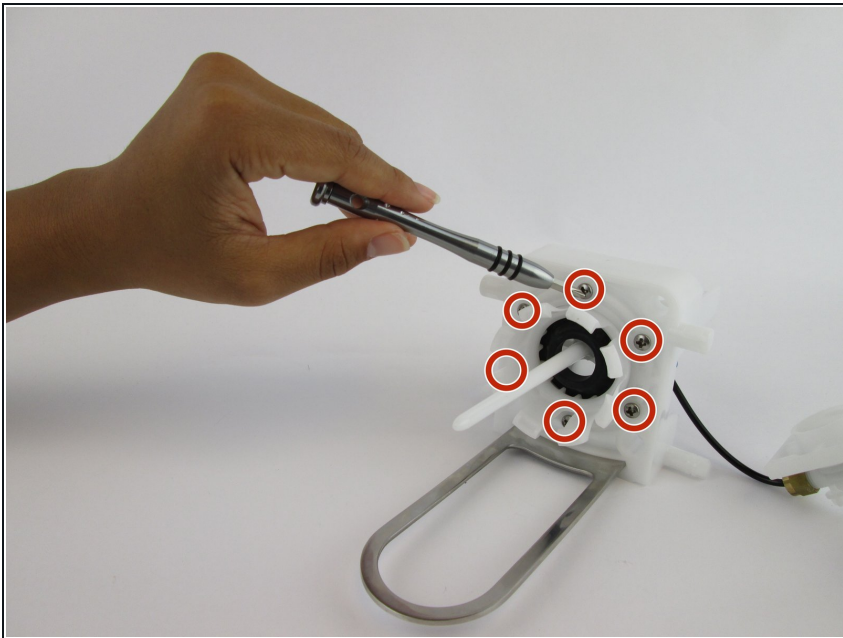
- Grip the right and left sides of the device and pull it into two identical halves.
- ① Once these two pieces are apart, all remaining internal components will fall out of the device.

Step 13



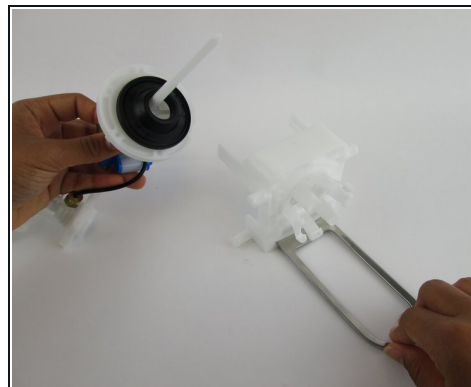
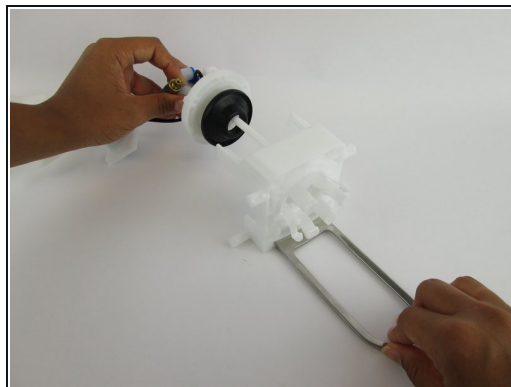
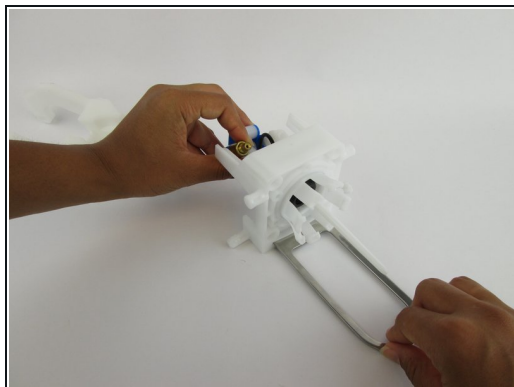
- Pull the foam pad up and remove it from the front side of the carbonation component.

Step 14



- Remove the six 17.7 mm screws from the underside of the loader tab piece.

Step 15



- Pull the loader tab out of the nozzle.

To reassemble your device, follow these instructions in reverse order.