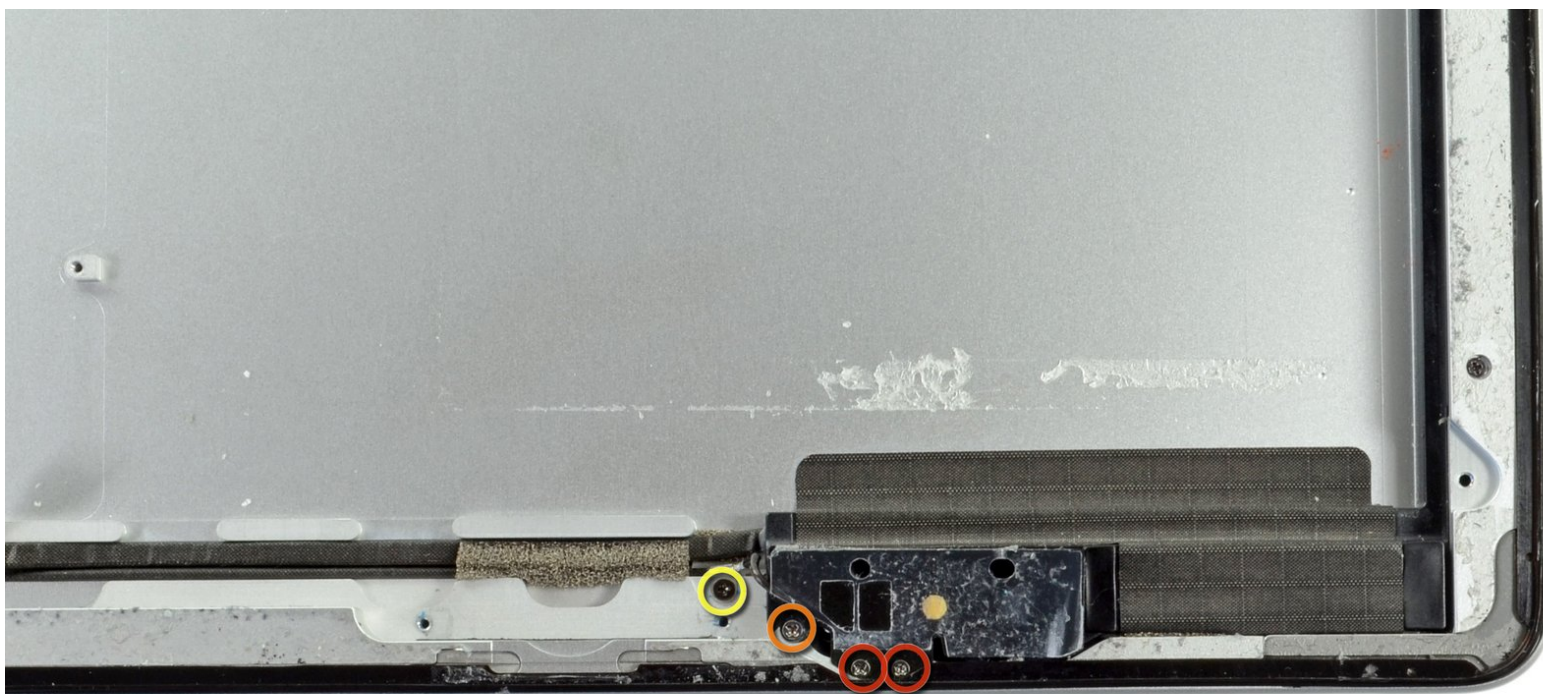




iPad 3 4G Wi-Fi Antenna Replacement

Internal Prereq. Removing Wi-Fi with battery removed

Written By: Brett Hartt



INTRODUCTION

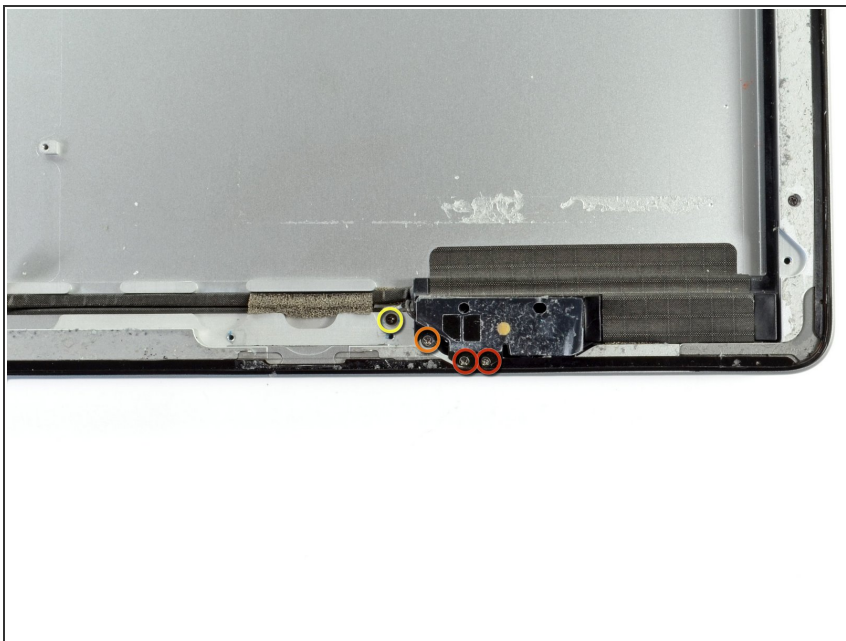
Internal Prereq. Removing Wi-Fi with battery removed



TOOLS:

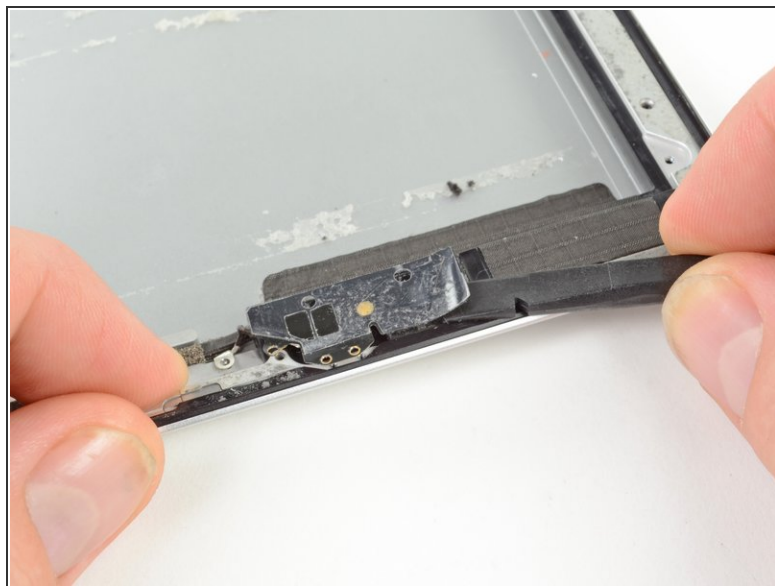
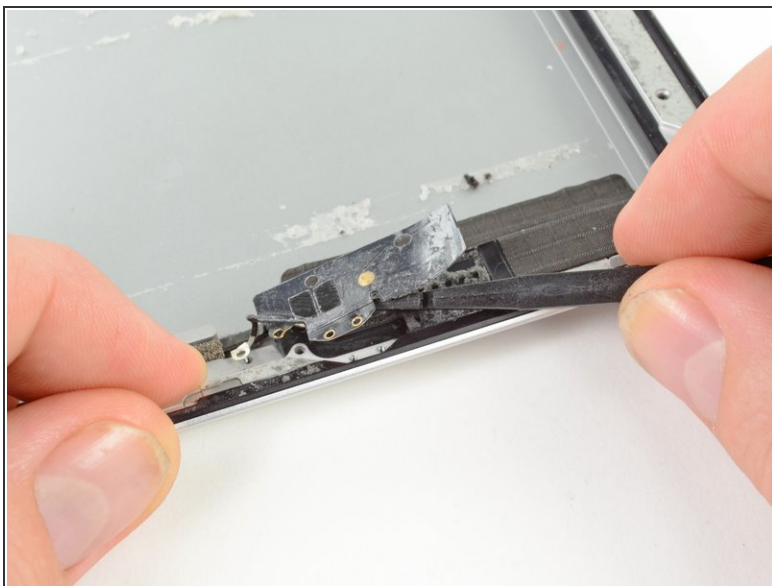
- [Phillips #00 Screwdriver](#) (1)
 - [Spudger](#) (1)
-

Step 1 — Wi-Fi Antenna



- Remove the following screws securing the Wi-Fi antenna to the aluminum frame.
 - Two 1.75 mm Phillips #00 (small head)
 - One 4.15 mm Phillips #00
 - One 1.8 mm Phillips #00 (wide head)

Step 2



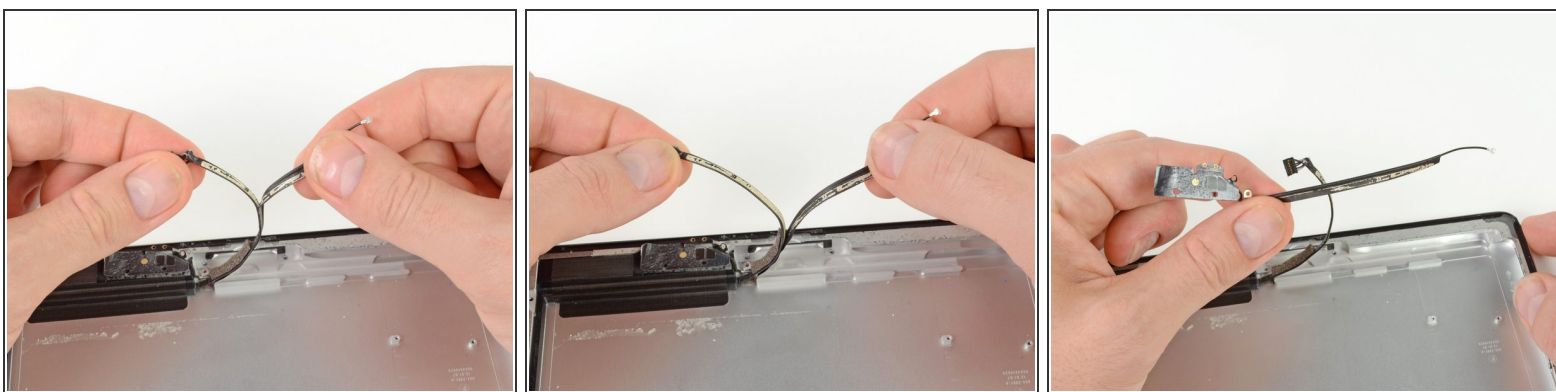
- Use the flat end of a spudger to loosen the foam adhesive holding the Wi-Fi antenna to the speaker assembly.

Step 3



- Firmly grasp the Wi-Fi antenna and speaker cable together.
- Carefully, pull the cables off of the aluminum frame.

Step 4



- Separate the speaker cable from the Wi-Fi antenna cable.
- Remove the Wi-Fi cable from the iPad.

To reassemble your device, follow these instructions in reverse order.