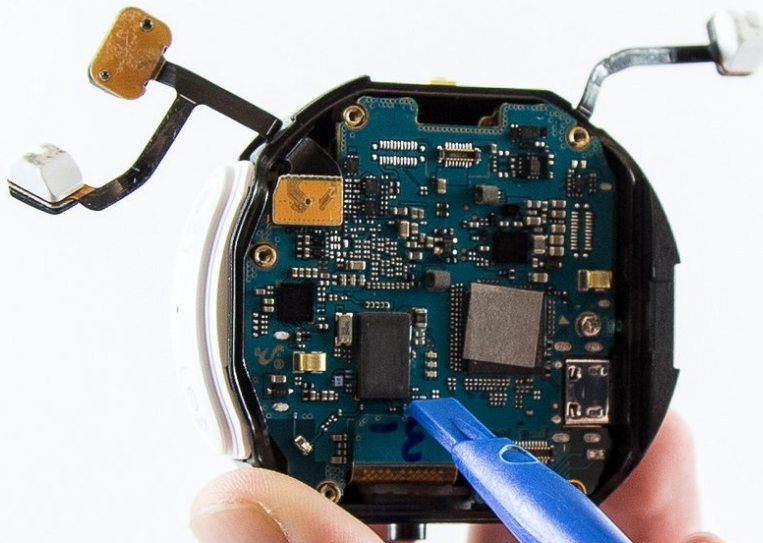




Samsung Gear 360 Motherboard Replacement

Written By: Connor



INTRODUCTION

Use this guide to remove the motherboard from the Samsung Gear 360. You will have to complete a full tear-down of the device to get to the motherboard, so follow the directions carefully and take your time to ensure you complete every step correctly.



TOOLS:

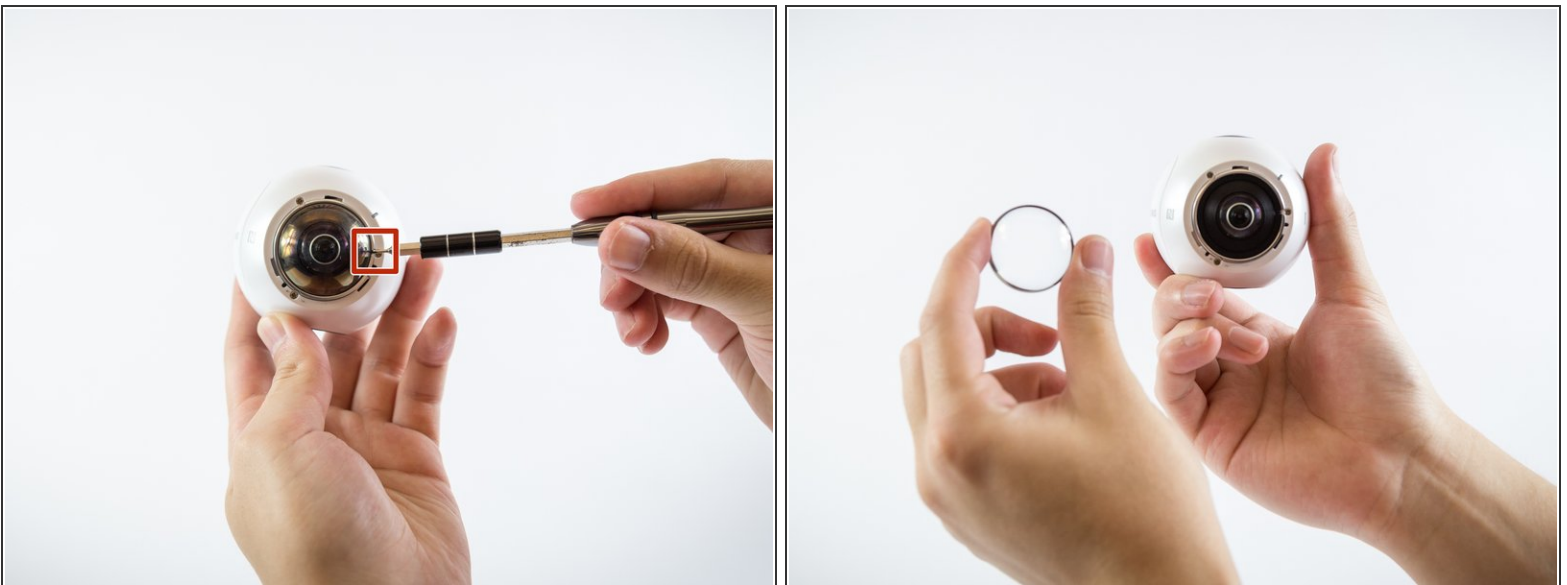
- [iFixit Opening Tools](#) (1)
 - [Phillips #00 Screwdriver](#) (1)
 - [1.0 mm Flathead Screwdriver](#) (1)
 - [Phillips #000 Screwdriver](#) (1)
-

Step 1 — Case



- Twist silver ring on the lens counter-clockwise with force to remove it.

Step 2



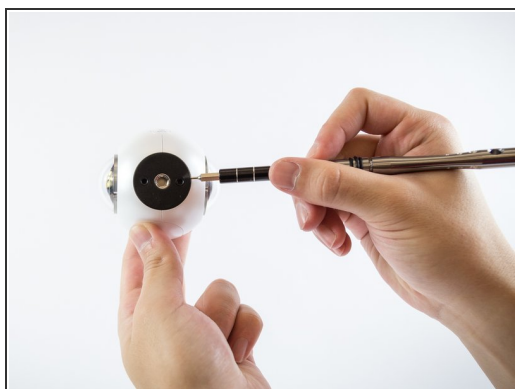
- Insert a small flathead screwdriver into marked slot on camera lens and pry off camera lens cover.

Step 3



- Using a PH00 screwdriver head, remove all Phillips #00 0.75 mm screws on the front of the camera.
- Repeat for the back side of the camera.

Step 4



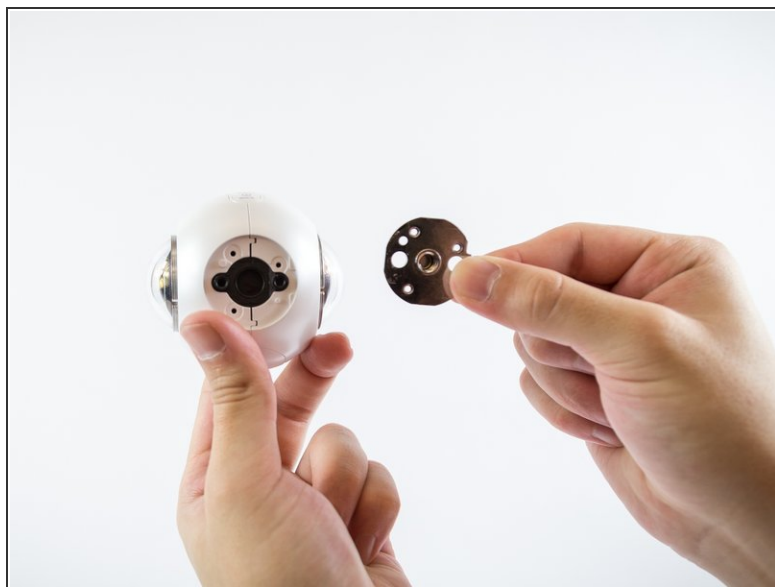
- Peel off the black rubber located on the bottom of the device using your hand or a small flathead screwdriver.

Step 5



- Once the black rubber has been removed, unscrew all Phillips #00 0.75 mm screws on the bottom of the device using a PH00 screwdriver head.

Step 6



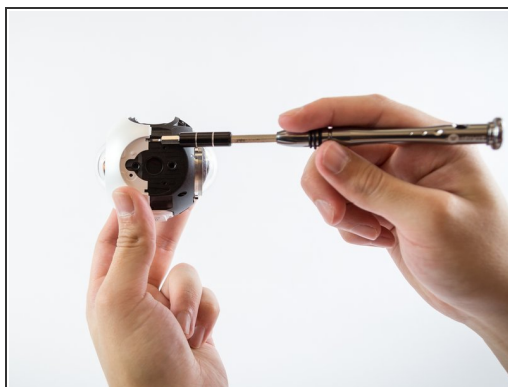
- Using a plastic opening tool, pry the tripod mount off the device.

Step 7



- Using both hands, carefully remove the right cover off the camera body.

Step 8



- To remove the left cover of the camera body, lift the left cover using a small flathead screwdriver and pull it off.

Step 9



- Once the camera body has been removed, lift and pull off the metal support ring using a small flathead screwdriver.
- Repeat for both sides of the camera.

Step 10



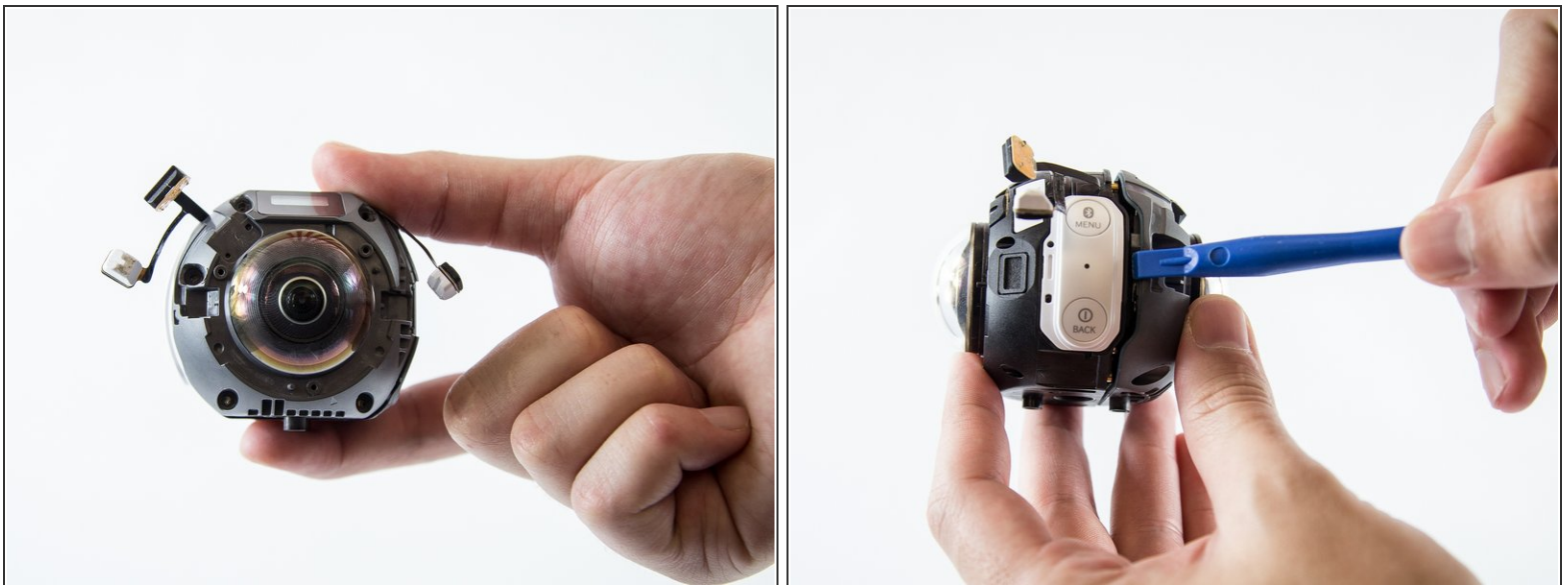
- Remove all Phillips #00 0.75 mm screws from the body of the camera using a PH00 screwdriver head.

Step 11



- Carefully lift the three sensors off using a plastic opening tool and pull them aside.

Step 12



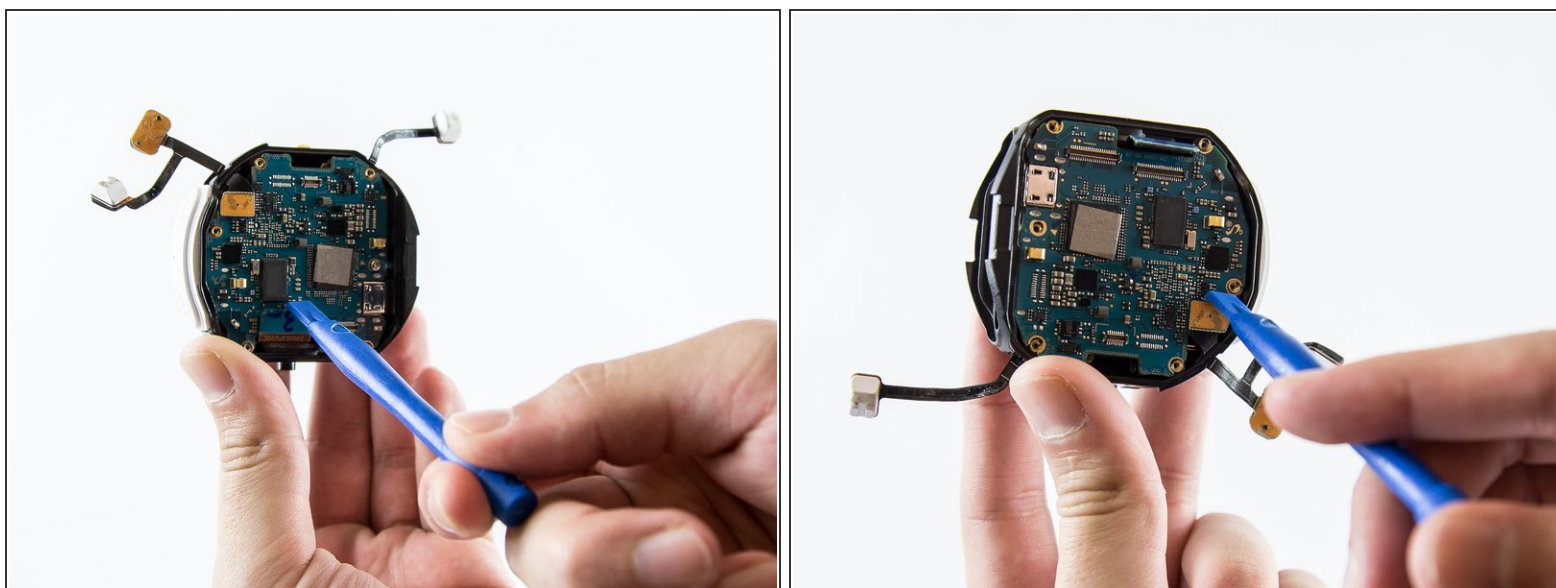
- Carefully use a plastic opening tool to separate the gray case from the black case on the device.

Step 13



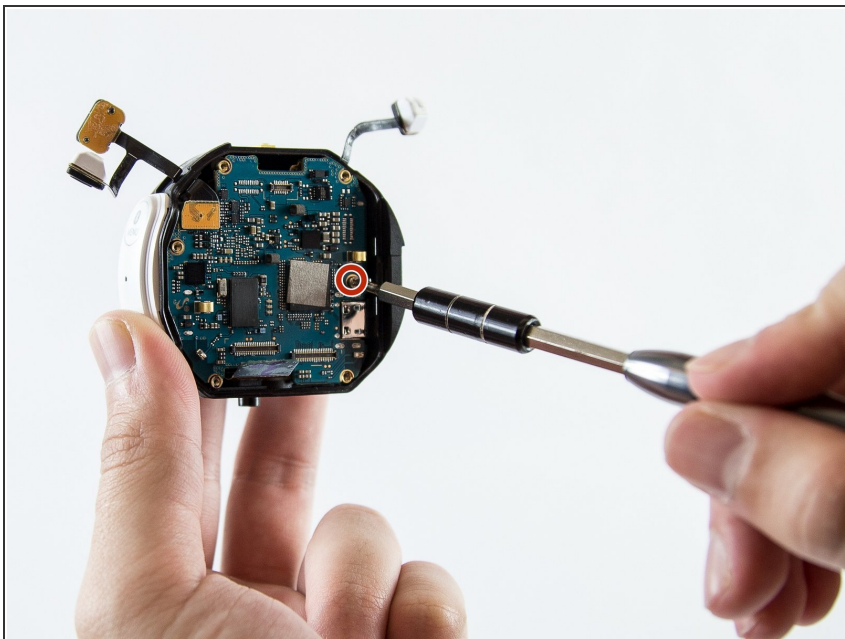
- Insert a plastic removal tool underneath the four sensors on the motherboard to fully separate the camera case.

Step 14 — Motherboard



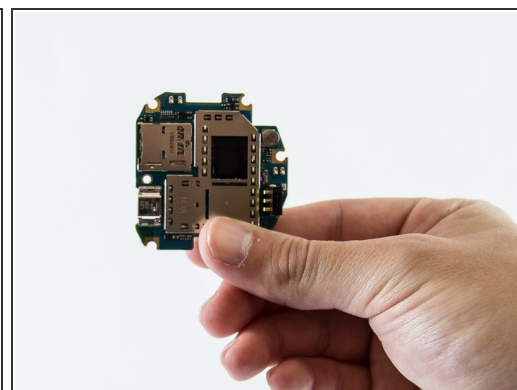
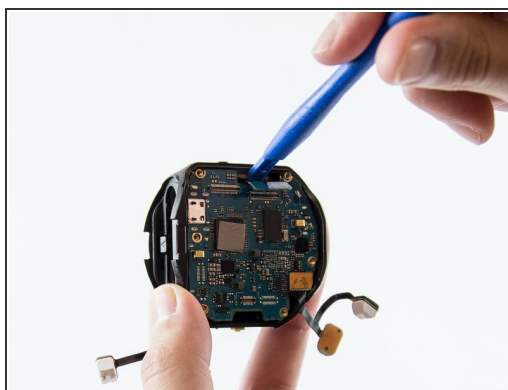
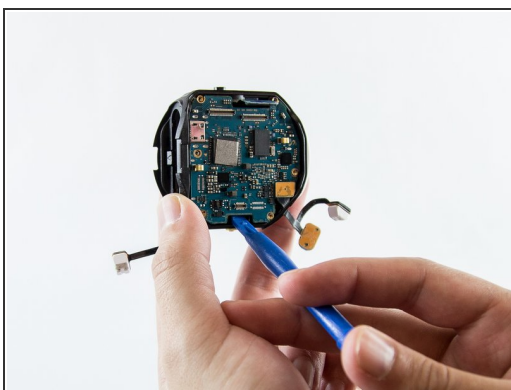
- Use a plastic opening tool to disconnect the sensors from the motherboard to free it.

Step 15



- Using a PH000 Screwdriver head, unscrew the Phillips #000 0.5 mm screw connected to the motherboard.

Step 16



- To remove the motherboard from the device, use a plastic opening tool on the edges and lift up.

To reassemble your device, follow these instructions in reverse order.