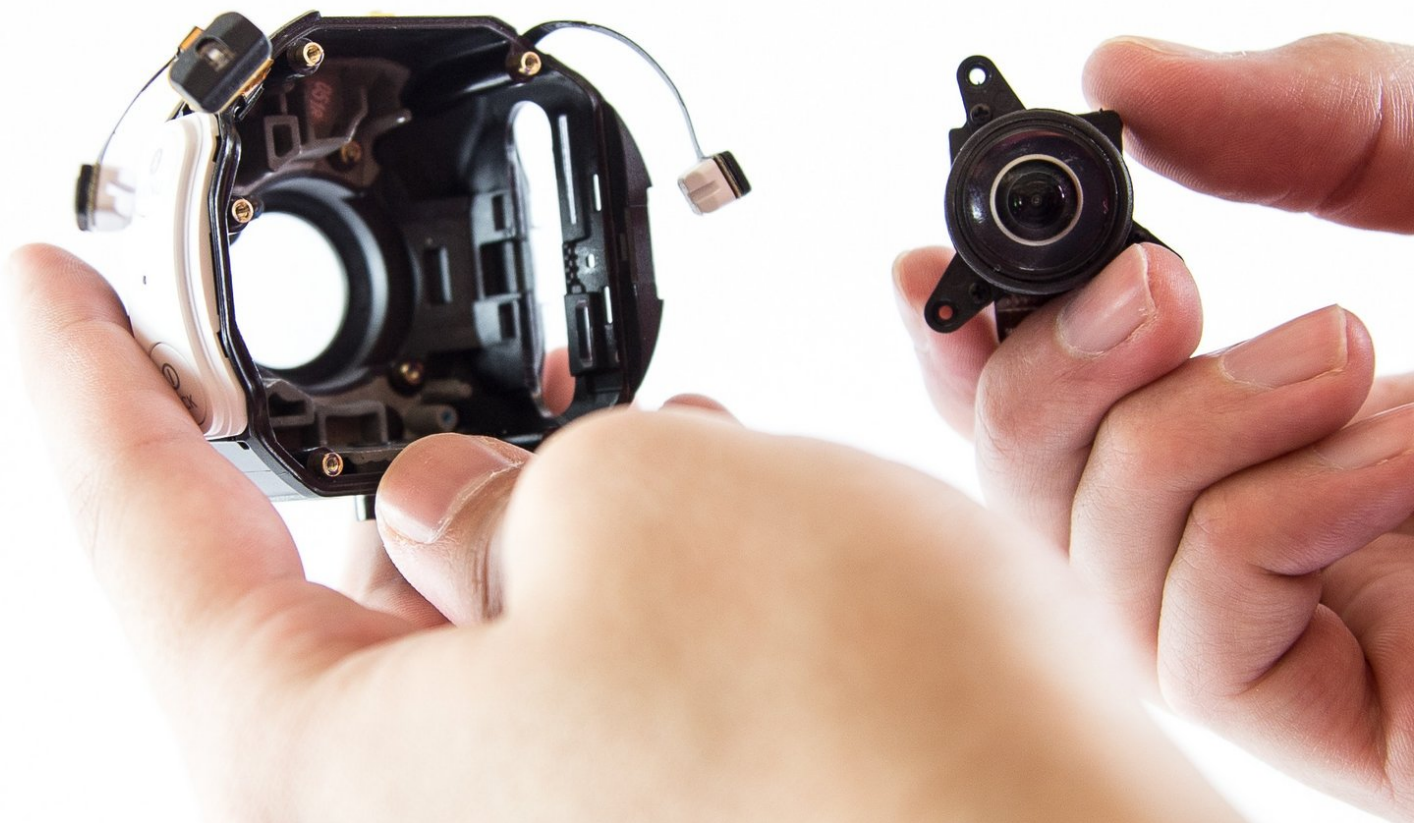




Samsung Gear 360 Rear Camera Replacement

This guide will show you how to remove the rear camera module from the Samsung Gear 360.

Written By: Connor



INTRODUCTION

This guide will show you how to remove the rear camera module from the Samsung Gear 360. Like the front camera, this module can be removed by completing a tear-down of the device, and unscrewing the module from there.



TOOLS:

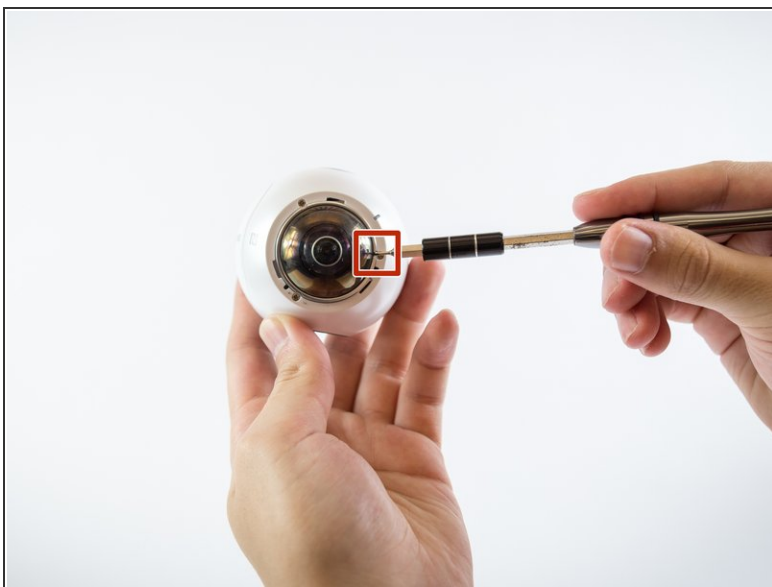
- [iFixit Opening Tools](#) (1)
 - [Phillips #00 Screwdriver](#) (1)
 - [1.0 mm Flathead Screwdriver](#) (1)
 - [Phillips #000 Screwdriver](#) (1)
-

Step 1 — Case



- Twist silver ring on the lens counter-clockwise with force to remove it.

Step 2



- Insert a small flathead screwdriver into marked slot on camera lens and pry off camera lens cover.

Step 3



- Using a PH00 screwdriver head, remove all Phillips #00 0.75 mm screws on the front of the camera.
- Repeat for the back side of the camera.

Step 4



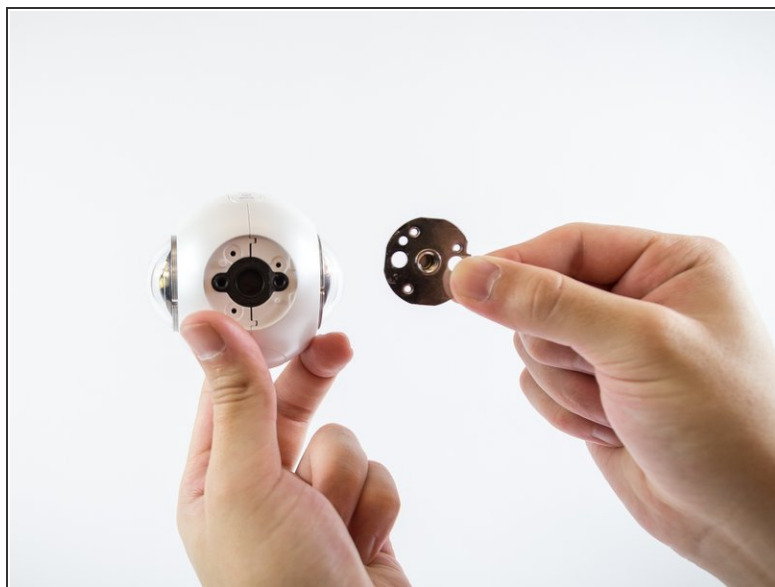
- Peel off the black rubber located on the bottom of the device using your hand or a small flathead screwdriver.

Step 5



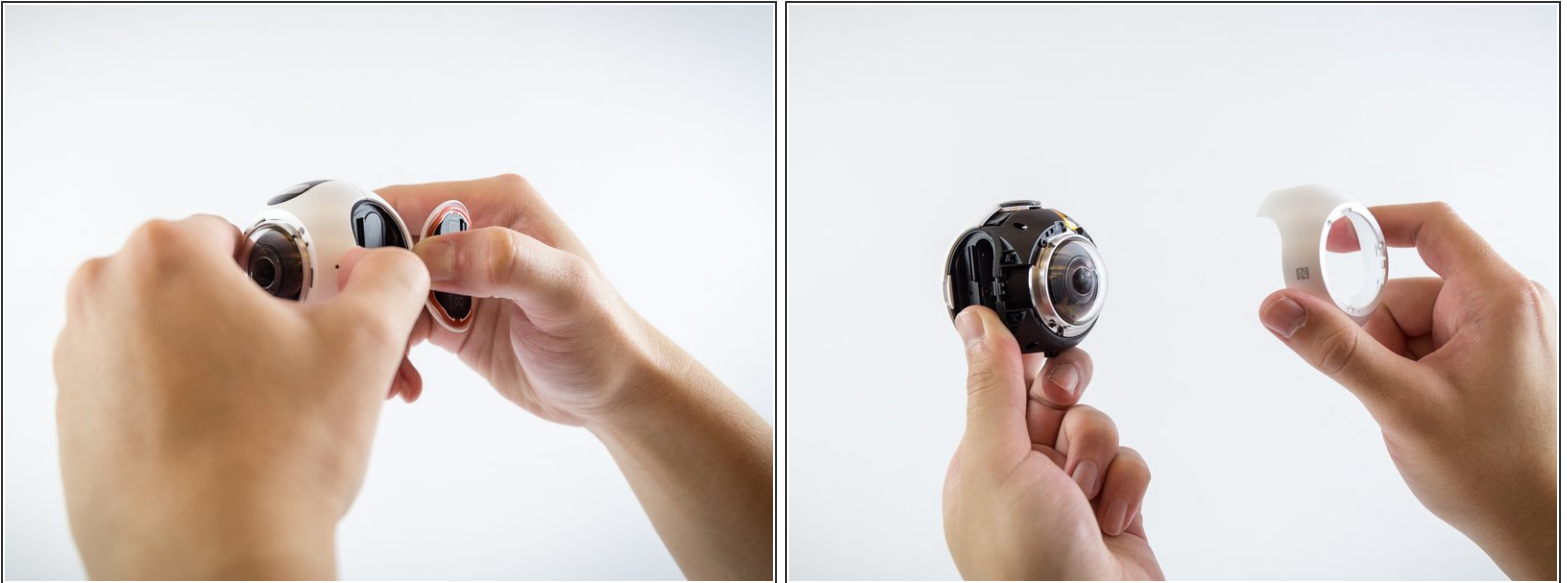
- Once the black rubber has been removed, unscrew all Phillips #00 0.75 mm screws on the bottom of the device using a PH00 screwdriver head.

Step 6



- Using a plastic opening tool, pry the tripod mount off the device.

Step 7



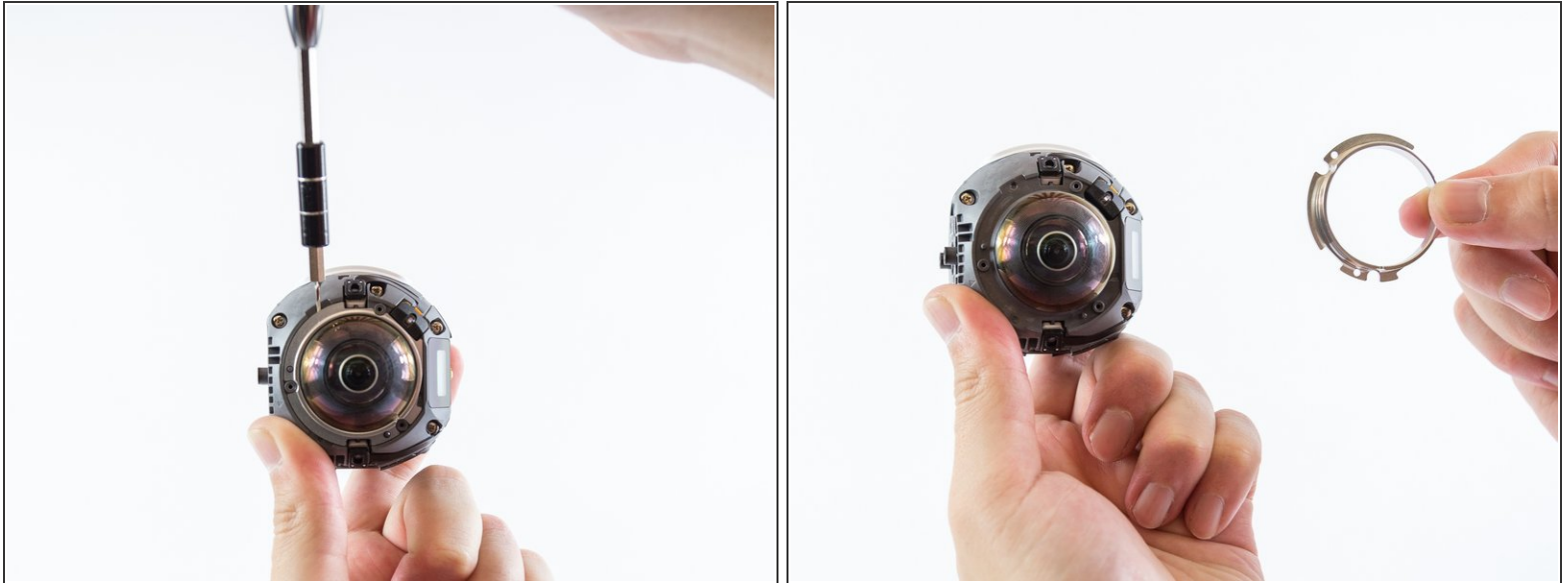
- Using both hands, carefully remove the right cover off the camera body.

Step 8



- To remove the left cover of the camera body, lift the left cover using a small flathead screwdriver and pull it off.

Step 9



- Once the camera body has been removed, lift and pull off the metal support ring using a small flathead screwdriver.
- Repeat for both sides of the camera.

Step 10



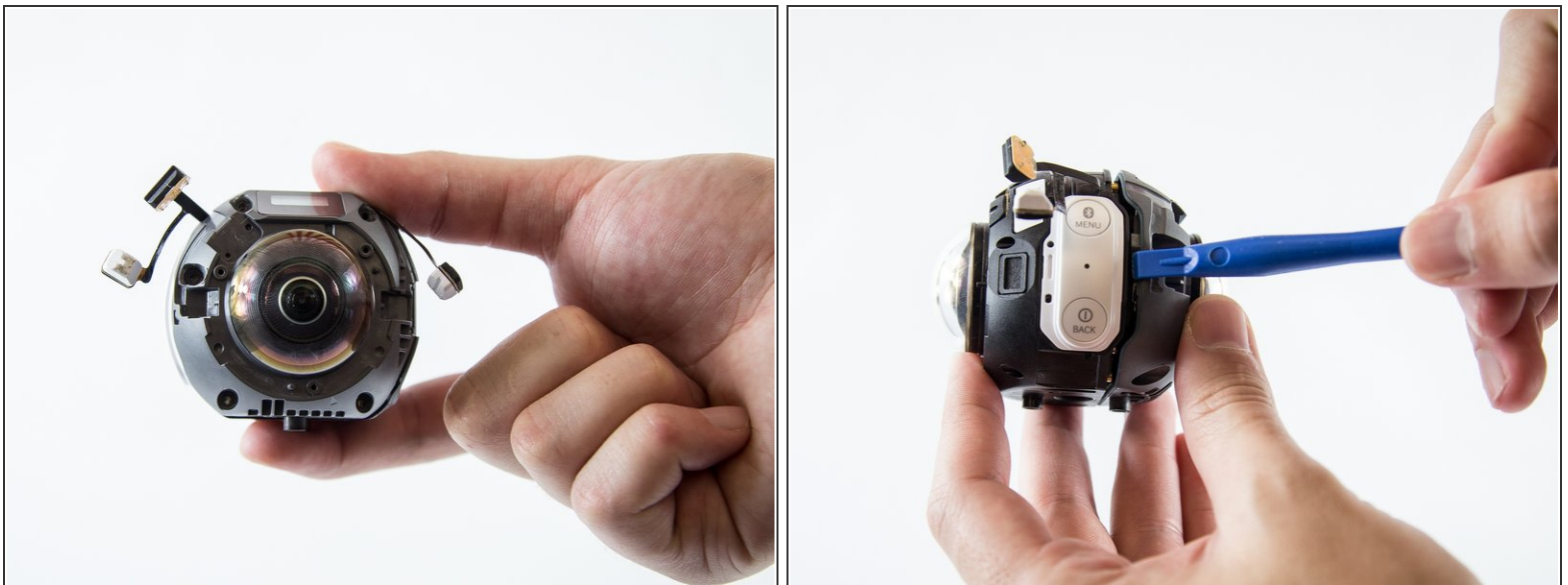
- Remove all Phillips #00 0.75 mm screws from the body of the camera using a PH00 screwdriver head.

Step 11



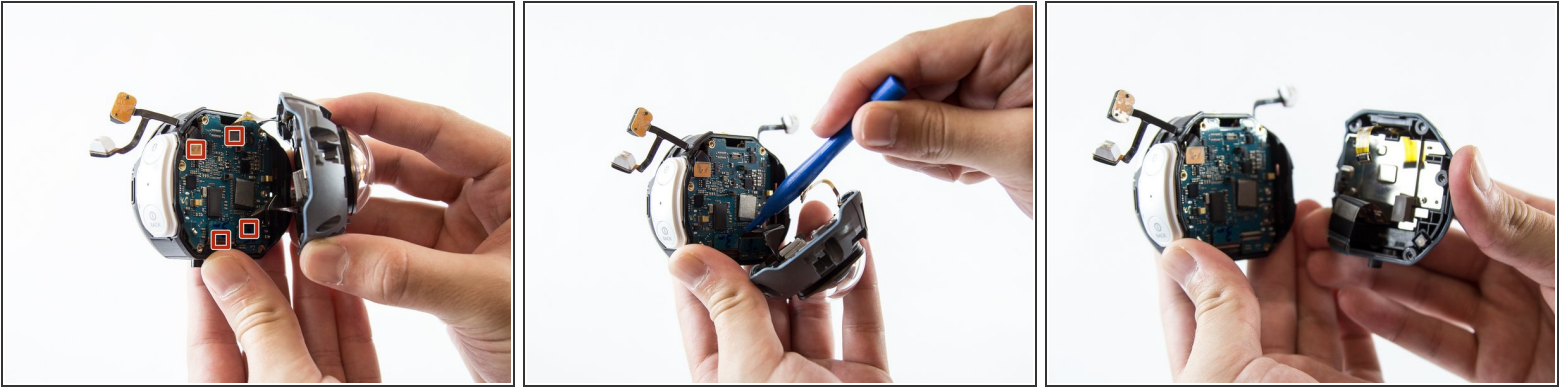
- Carefully lift the three sensors off using a plastic opening tool and pull them aside.

Step 12



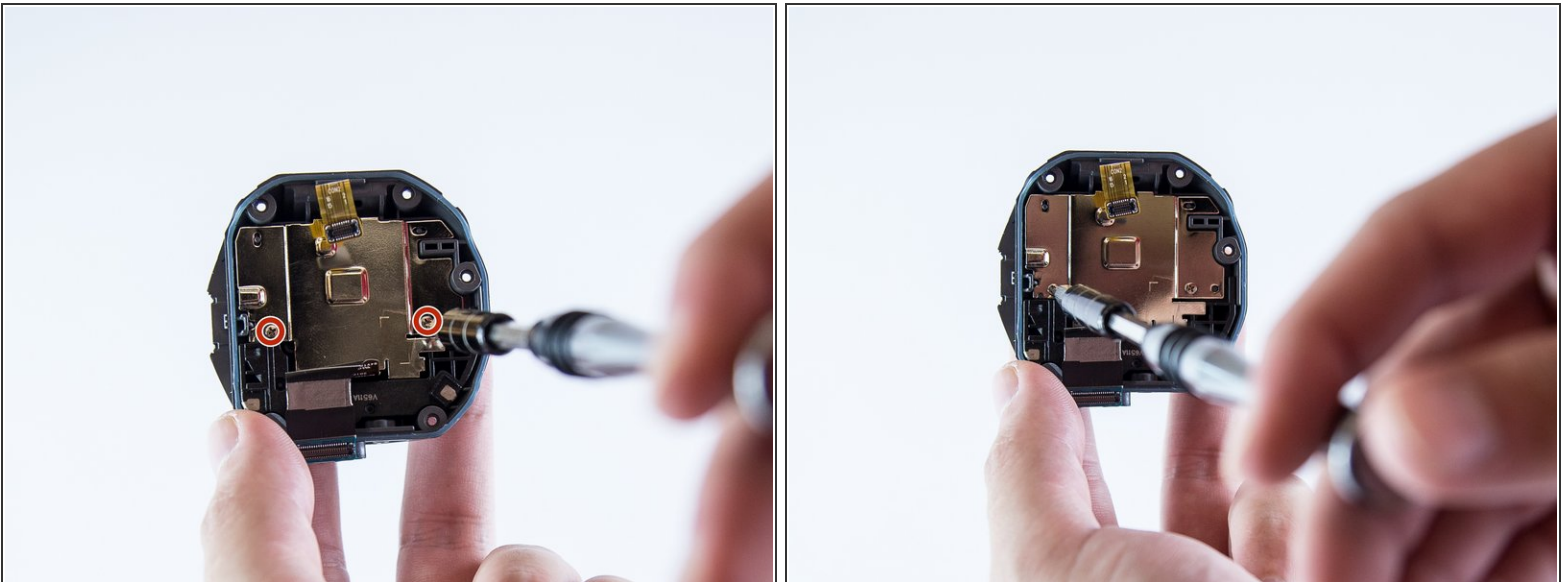
- Carefully use a plastic opening tool to separate the gray case from the black case on the device.

Step 13



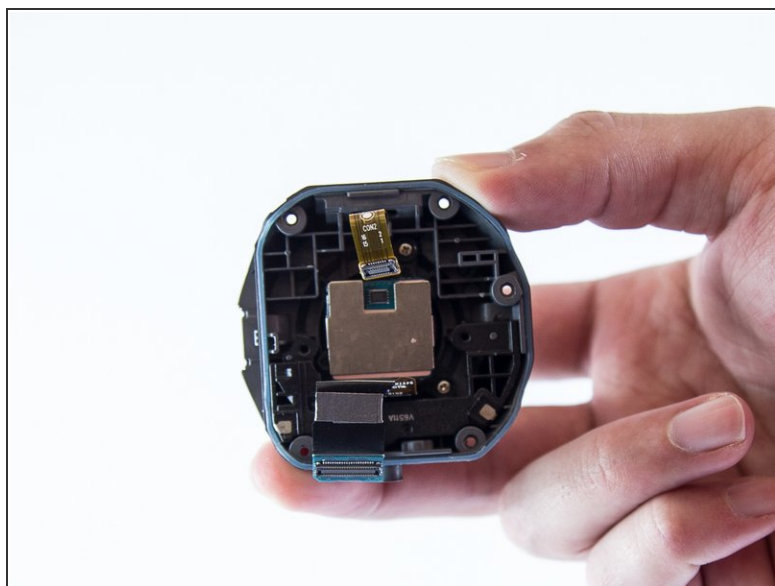
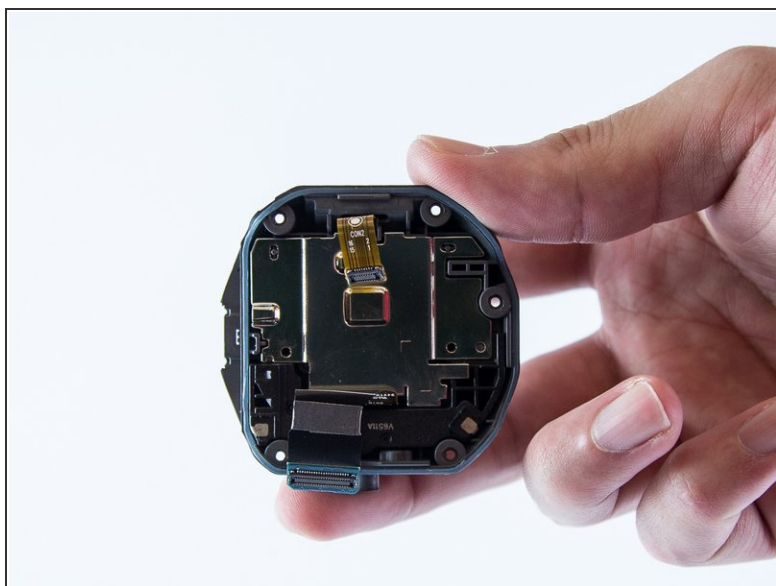
- Insert a plastic removal tool underneath the four sensors on the motherboard to fully separate the camera case.

Step 14 — Rear Camera



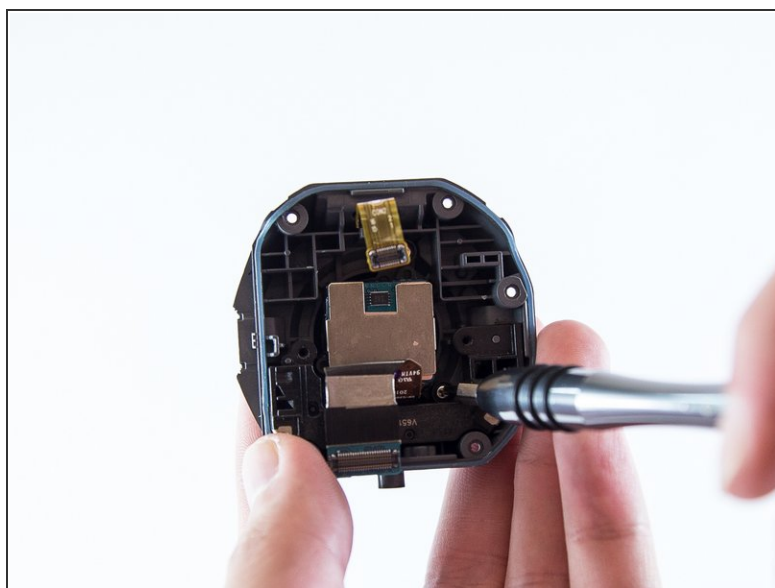
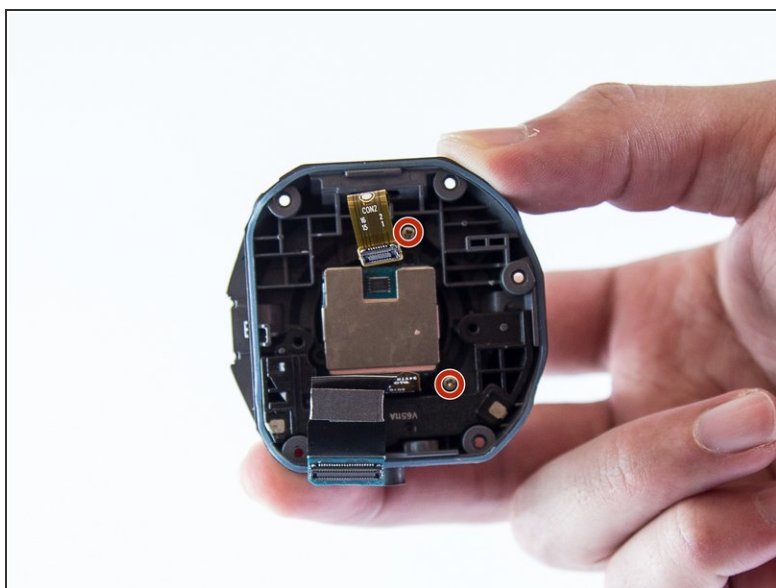
- Within the grey half of the case, unscrew both Phillips #00 0.75 mm screws located on the metal plate using PH00 screwdriver.

Step 15



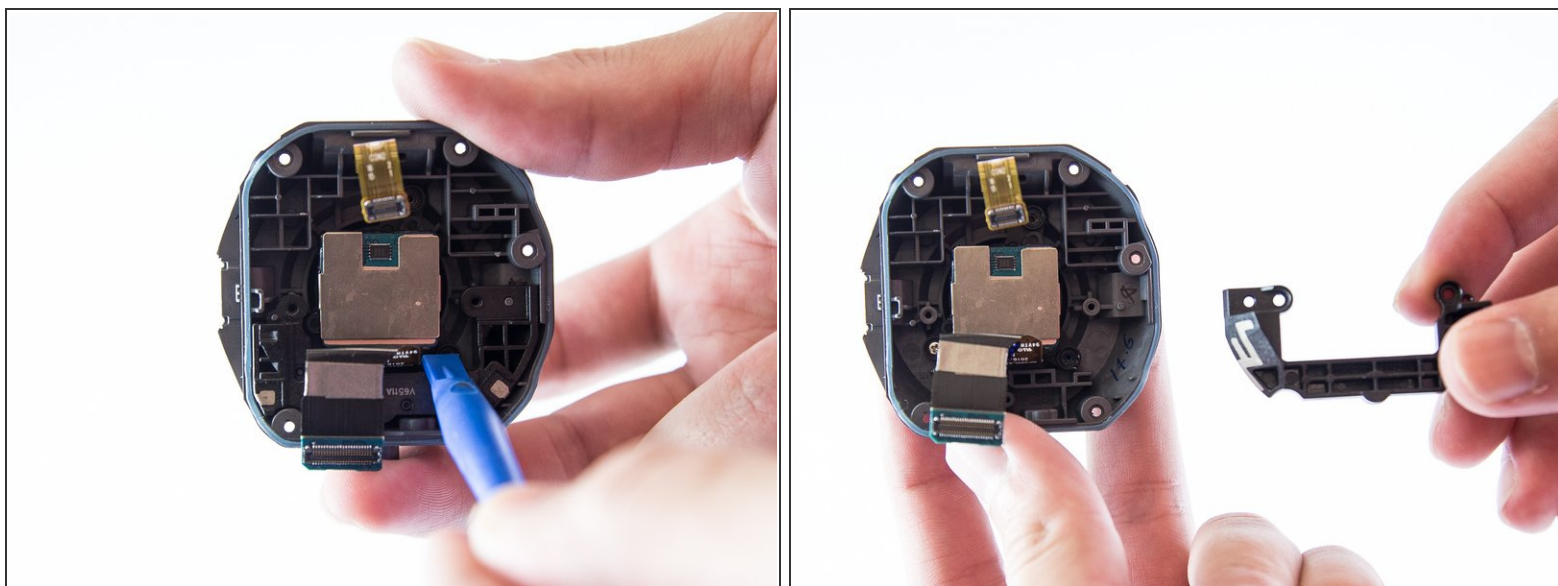
- Once the screws have been removed, remove the metal plate.

Step 16



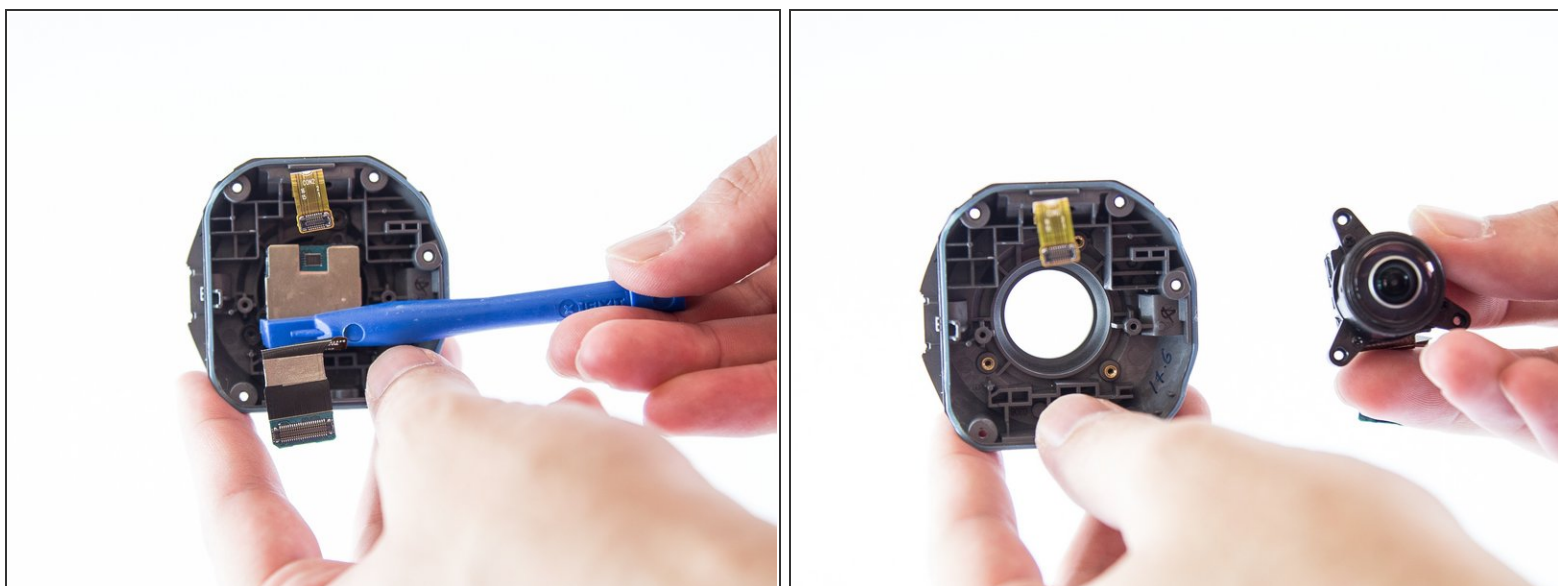
- Using a PH000 screwdriver head, remove the both Phillips #000 0.75 mm screws on the grey case.

Step 17



- Using a plastic opening tool, remove the plastic cover underneath the rear camera

Step 18



- Gently remove the rear camera module by using a plastic opening tool and lifting the module.

To reassemble your device, follow these instructions in reverse order.